



# MONTANA FISH, WILDLIFE & PARKS

## NOXIOUS WEED MANAGEMENT

### FISCAL YEAR 2024

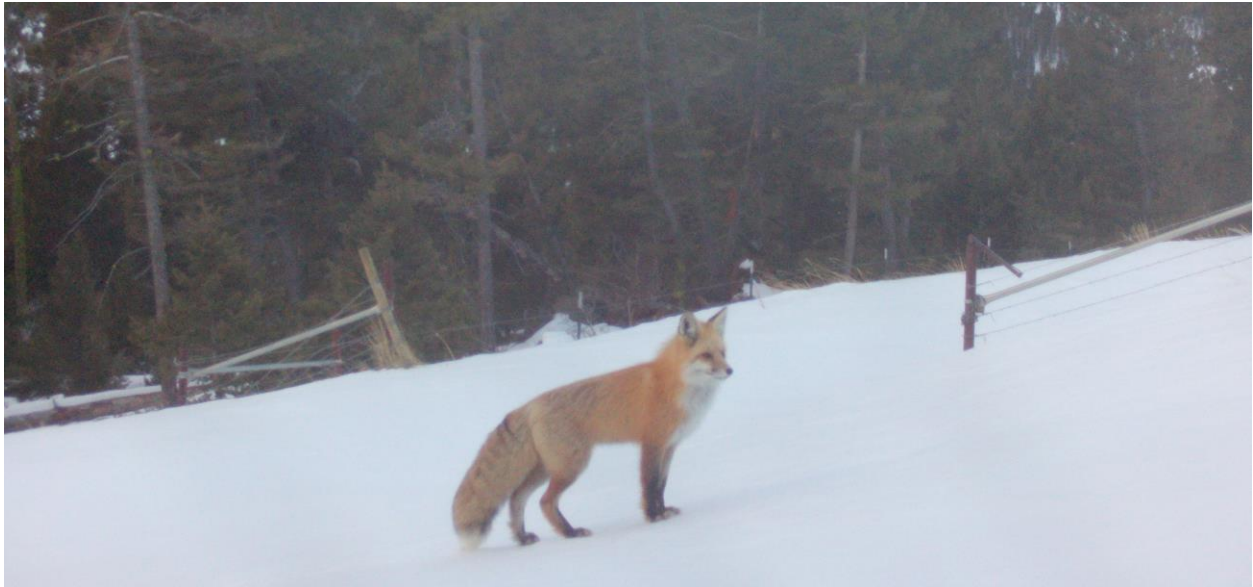


Photo Credit: Adam Sieges, Spotted Dog WMA

Prepared by: Adam Sieges  
Statewide Weed Coordinator  
Montana Fish, Wildlife & Parks

# TABLE OF CONTENTS

TABLE OF CONTENTS.....	2
EXECUTIVE SUMMARY .....	4
WEED MANAGEMENT DATA TABLES .....	7
Region 1 FY24 Noxious Weed Management Report Wildlife Management Areas .....	10
Region 1 FY24 Noxious Weed Management Report Fishing Access Sites .....	11
Region 1 FY24 Noxious Weed Management Report Parks .....	13
Region 2 FY24 Noxious Weed Management Report Wildlife Management Areas .....	14
Region 2 FY24 Noxious Weed Management Report Fishing Access Sites .....	15
Region 2 FY24 Noxious Weed Management Report Parks .....	18
Region 3 FY24 Noxious Weed Management Report Wildlife Management Areas .....	19
Region 3 FY24 Noxious Weed Management Report Fishing Access Sites .....	20
Region 3 FY24 Noxious Weed Management Report Parks .....	24
Region 4 FY24 Noxious Weed Management Report Wildlife Management Areas .....	25
Region 4 FY24 Noxious Weed Management Report Fishing Access Sites .....	26
Region 4 FY24 Noxious Weed Management Report Parks .....	29
Region 5 FY24 Noxious Weed Management Report Wildlife Management Areas .....	30
Region 5 FY24 Noxious Weed Management Report Fishing Access Sites .....	31
Region 5 FY24 Noxious Weed Management Report Parks .....	33
Region 6 FY24 Noxious Weed Management Report Wildlife Management Area .....	34
Region 6 FY24 Noxious Weed Management Report Fishing Access Sites .....	35
Region 6 FY24 Noxious Weed Management Report Parks .....	36
Region 6 FY24 Noxious Weed Management Report Administrative Sites and Affiliated Lands .....	36
Region 7 FY24 Noxious Weed Management Report Wildlife Management Areas .....	37
Region 7 FY24 Noxious Weed Management Report Fishing Access Sites .....	39

Region 7 FY24 Noxious Weed Management Report Parks ..... 39

Region 7 FY24 Noxious Weed Management Report Administrative Sites and Affiliated Lands ..... 39

## EXECUTIVE SUMMARY

This report summarizes weed management expenditures and accomplishments across all Montana Fish, Wildlife and Parks (FWP) lands during Fiscal Year 2024 (FY24), July 1, 2023 through June 30, 2024.

FWP directly manages 517,572 acres across 503 distinct sites throughout the state and is responsible for noxious weed management on most of these areas. Estimated infested acres for all FWP lands for FY24 were 52,411, equaling approximately 14% infested. The acreages associated within each separate site type are as follows:

- Fishing Access Sites (FAS) comprise approximately 17,233 acres in fee title and leased lands across 359 sites. Estimated noxious weed infested acres for these lands were 2,764, equaling approximately 16% infested in FY24. Utilizing chemical, mechanical, biological control and revegetation treatment methods the department treated 1,430 acres, equaling approximately 50% of infested acres treated for the fiscal year.
- Wildlife Management Areas (WMA) comprise approximately 457,991 acres in fee title and leased lands across 81 sites. Estimated noxious weed infested acres for these lands were 44,664, equaling approximately 10% infested in FY24. Utilizing chemical, mechanical, biological control and revegetation treatment methods the department treated 14,339 acres, equaling approximately 31% of infested acres treated for the fiscal year.
- State Parks (SP) comprise approximately 42,237 acres in fee title and leased lands across 58 sites. Estimated noxious weed infested acres for these lands were 4,945, equaling approximately 12% infested in FY24. Utilizing chemical, mechanical, biological control and revegetation treatment methods the department treated 1,595 acres, equaling approximately 32% of infested acres treated for the fiscal year.

FWP continues to implement an integrated approach to controlling noxious weeds, as further described in FWP's statewide noxious weed plan (2008). That plan can be accessed and downloaded using the following web link: <https://fwp.mt.gov/conservation/habitat/noxious-weed-management>

Using an integrated approach to managing weeds, FWP staff prioritize efforts and select the most appropriate technique for addressing each noxious weed issue. For instance, infestations with a high likelihood of spreading to new locations are a priority for herbicide treatment, including parking lots, roads, and other high public use areas. New infestations in areas that previously lacked infestations or new noxious weed species are also a high priority for treatment and eradication, if possible. Vast infestations often require a different approach in collaboration with neighboring properties and county weed coordinators. Biocontrol in combination with herbicide applications at strategic locations are commonly used as a long-term solution where infestations are extensive, spanning multiple ownerships.

FWP also strives to take an ecological approach to weed management and prevention. This includes, where possible, avoiding ground disturbance, minimizing impacts from construction or other management activities, and being mindful to avoid impacting non-target vegetation when implementing weed control measures.

During FY24 FWP treated over 14,338 acres with herbicide equaling about 27% of reported estimated infested acres (Table 2) for the year. Combined with other types of treatments – mechanical and insect/biocontrol, the department treated approximately 16,677 acres, using the MT. Department of Agriculture’s estimate of 5 acres treated per biological control release. This represents an increase of 4,708 acres from the previous year equaling 32% of the total agency estimated infested acres. There was an estimated increase of 178 infested acres across all agency properties from the fiscal year in addition to the agency acquiring 687 acres of management responsibility (weeds have yet to be fully inventoried on these new acreages). Noxious weed treatment expenditures were an estimated total of \$1,153,437 agency wide for the fiscal year (Table 3). Some personnel costs, training, education and outreach, and other aspects of weed management and prevention may not be included in these figures.

In addition to work on FWP lands, the department also provides funding toward weed management on private lands through the Block Management Program (Table 1). In 2024, FWP paid over \$ 563,821 to private landowners specifically to weed control.

**Table 1. Summary of payments during 2023 to private landowners through the Block Management Program.**

Region	Total BMAs	Weed Payment	Total Payment
1	19	\$ 16,602.68	\$ 357,156.28
2	73	\$ 61,685.50	\$ 1,292,050.23
3	97	\$ 82,731.15	\$ 1,728,733.08
4	157	\$ 104,251.18	\$ 2,192,948.87
5	104	\$ 43,616.64	\$ 933,180.09
6	205	\$ 150,558.92	\$ 3,231,986.25
7	245	\$ 104,375.24	\$ 2,209,205.26
<b>Totals:</b>	900	\$ 563,821.30	\$ 11,945,260.05

FWP works closely with other government agencies including MT Department of Natural Resources and Conservation, U.S. Forest Service, MT Department of Agriculture, Bureau of Land Management and County Weed Coordinators along with private contractors and private landowners, to coordinate weed control efforts and to help contain the spread of noxious weeds throughout the state.

The Kelly Flynn Montana Wildlife Habitat Improvement Act (WHIP) funds large-scale wildlife habitat and plant community restoration projects through noxious weed treatments on high priority wildlife habitats. In FY24 the program had two applicants, both grants that had been approved in the inaugural funding cycle of the program. Treatment objectives, priority wildlife habitat acres and awarded funds are as follows.

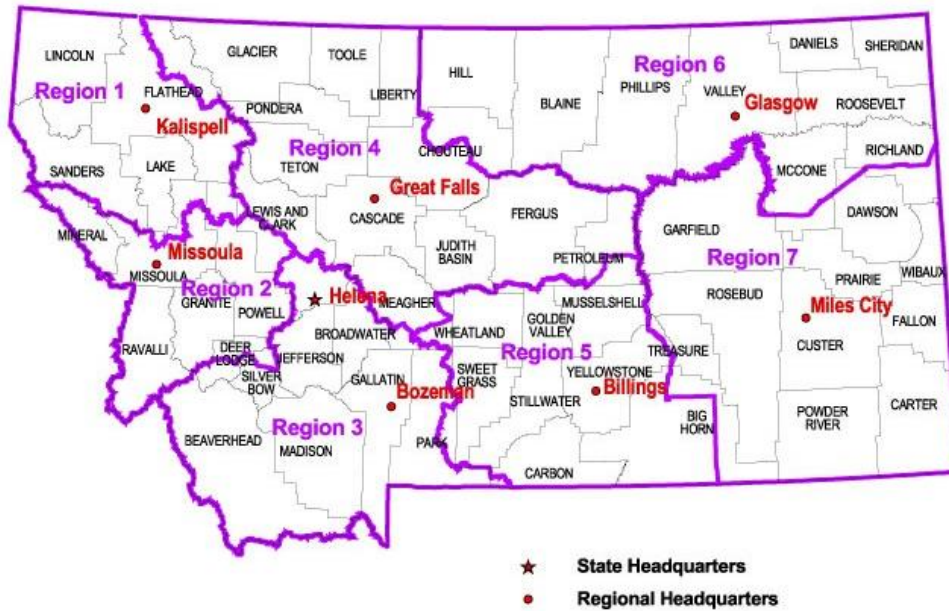
**Blackfoot Community Conservation Area (5 years):**

- 5,609 acres – Priority wildlife habitat
- 398 acres – Treatment area (herbicide & reseeding)
- \$49,500 – Grant funds (PR dollars); \$16,500 matching funds; Total project \$66,000

**Upper Ruby Watershed Noxious Species Control WHIP Project (5 years):**

- 280,128 acres – Priority wildlife habitat
- 4,940 acres – Treatment area (herbicide & improved grazing)
- \$701,250 – Grant funds (PR dollars); \$233,750 matching funds; Total project \$935,000

The Data Tables Section of this report, which follows, summarizes weed infestation and control activities over most of the sites managed by FWP. This data is collected annually from the staff responsible for managing these sites. Data are organized by Administrative Region (Figure 1) and then by Division and County.



**Figure 1. Montana Fish, Wildlife and Parks Administrative Regional Boundaries**

## WEED MANAGEMENT DATA TABLES

Administrative Region	Acres	Reported Infested Acres	Avg. Site Type % Infested	Chemically Treated Acres	Mechanically Treated Acres	Insect Releases	Grazing Acres	Revegetated Acres
Wildlife Management Areas	16,284	4,069	16%	413	20	0	0	0
Fishing Access Sites	689	82	11%	78	10	0	0	0
State Parks	6,183	3,104	36%	33	33	0	0	0
<b>Region 1 Totals</b>	<b>23,156</b>	<b>7,255</b>	<b>21%</b>	<b>523</b>	<b>63</b>	<b>0</b>	<b>0</b>	<b>0</b>
Wildlife Management Areas	153,766	20,174	13%	3,778	70	198	0	13
Fishing Access Sites	4,068	996	39%	190	277	0	0	0
State Parks	6,185	875	18%	334	396	0	0	0
<b>Region 2 Totals</b>	<b>164,019</b>	<b>22,044</b>	<b>23%</b>	<b>4,302</b>	<b>743</b>	<b>198</b>	<b>0</b>	<b>13</b>
Wildlife Management Areas	145,396	15,000	9%	6,468	0	0	0	0
Fishing Access Sites	5,306	355	11%	321	0	5.25	0	0
State Parks	6,213	126	3%	601	0	0	0	0
<b>Region 3 Totals</b>	<b>156,915</b>	<b>15,481</b>	<b>8%</b>	<b>7,390</b>	<b>0</b>	<b>5.25</b>	<b>0</b>	<b>0</b>
Wildlife Management Areas	108,009	3,355	6%	1,604	15	35	0	0
Fishing Access Sites	2,232	244	23%	100	0	0	0	0
State Parks	5,954	340	11%	53	2.5	0	0	0
<b>Region 4 Totals</b>	<b>116,194</b>	<b>3,939</b>	<b>13%</b>	<b>1,758</b>	<b>17.5</b>	<b>35</b>	<b>0</b>	<b>0</b>
Wildlife Management Areas	15,809	1,287	13%	23	4.2	0	640	0
Fishing Access Sites	2,769	956	41%	183	164	0	55	0
State Parks	1,015	121	12%	34	63	0	0	1
<b>Region 5 Totals</b>	<b>19,593</b>	<b>2,364</b>	<b>22%</b>	<b>239</b>	<b>230</b>	<b>0</b>	<b>695</b>	<b>1</b>
Wildlife Management Areas	14,355	467	8%	17	0	0	0	0
Fishing Access Sites	722	38	8%	6	0	0	0	0
State Parks	450	3	1%	0	0	0	0	0
Administrative Sites	103	36.3	13%	0.5	0	0	0	0
<b>Region 6 Totals</b>	<b>15,629</b>	<b>544</b>	<b>8%</b>	<b>24</b>	<b>0</b>	<b>0</b>	<b>0</b>	<b>0</b>
Wildlife Management Areas	4,372	313	19%	30	4	0	0	75
Fishing Access Sites	1,448	94	12%	23	0.25	0	0	0
State Parks	16,238	376	2%	45	0	0	0	0
Administrative Sites	7.72	0.05	1%	4.75	0	0	0	0
<b>Region 7 Totals</b>	<b>22,066</b>	<b>783</b>	<b>8%</b>	<b>101</b>	<b>4</b>	<b>0</b>	<b>0</b>	<b>75</b>
<b>Statewide Reported Totals</b>	<b>517,572</b>	<b>52,411</b>	<b>14.76%</b>	<b>14,339</b>	<b>1,058</b>	<b>238</b>	<b>695</b>	<b>89</b>

**Table 2. Statewide summary of weed management activities of Montana Fish, Wildlife & Parks for all Regions and Divisions during Fiscal Year 2024**



Description	State Parks Division						
	1	2	3	4	5	6	7
Private Weed Control Contract	\$ -	\$ 23,166.27	\$ 14,995	\$ 10,658.95	\$ -	\$ -	\$ 3,000
County Control Contract	\$ 4,000	\$ -	\$ 102	\$ -	\$ 3,699.73	\$ -	\$ 361.13
Weed Control (Supplies and Materials)	\$ -	\$ -	\$ -	\$ 2,288.92	\$ 99.96	\$ -	\$ -
FWP Maintenance Rate Charges	\$ 18,849.34	\$ 17,773.30	\$ -	\$ 5,231.81	\$ 5,306.02	\$ 3,636.29	\$ 3,970.24
<b>TOTAL COSTS</b>	<b>\$ 22,849.34</b>	<b>\$ 40,939.57</b>	<b>\$ 15,097</b>	<b>\$ 18,179.68</b>	<b>\$ 9,105.71</b>	<b>\$ 3,636.29</b>	<b>\$ 7,331.37</b>
<b>DIVISIONAL TOTAL</b>	<b>\$ 117,139</b>						
Description	Fisheries Division						
	1	2	3	4	5	6	7
Private Weed Control Contract	\$ -	\$ 28,514	\$ 52,349.72	\$ 6,933.05	\$ 5,439.87	\$ -	\$ -
County Weed Control	\$ 850	\$ -	\$ 16,130.20	\$ 8,385.86	\$ 18,769.92	\$ 143.66	\$ 2,683.17
Weed Control (Supplies and Materials)	\$ -	\$ -	\$ 60.78	\$ 3,228.91	\$ -	\$ -	\$ 142.50
FWP Maintenance Rate Charges	\$ 8,163.10	\$ 13,803.06	\$ -	\$ 10,797.56	\$ -	\$ 4,211.42	\$ 5,899.70
<b>TOTAL COSTS</b>	<b>\$ 9,013.10</b>	<b>\$ 42,317.06</b>	<b>\$ 68,540.70</b>	<b>\$ 29,345.38</b>	<b>\$ 24,209.79</b>	<b>\$ 4,355.08</b>	<b>\$ 8,725.37</b>
<b>DIVISIONAL TOTAL</b>	<b>\$ 186,506</b>						
Description	Wildlife Division						
	1	2	3	4	5	6	7
Private Weed Control Contract	\$ 14,904	\$ 166,265	\$ 388,825.47	\$ -	\$ 34,821.02	\$ -	\$ -
County Weed Control	\$ -	\$ -	\$ -	\$ 6,630	\$ 5,944.38	\$ -	\$ 2,773.94
Weed Control (Supplies & Materials)	\$ -	\$ -	\$ -	\$ 5,263.92	\$ -	\$ -	\$ -
FWP Maintenance Rate Charges	\$ 18,459.74	\$ 47,420	\$ -	\$ 137,585.34	\$ -	\$ 3,729.05	\$ 371.05
<b>TOTAL COSTS</b>	<b>\$ 33,363.74</b>	<b>\$ 213,684.70</b>	<b>\$ 388,825.47</b>	<b>\$ 149,479.26</b>	<b>\$ 40,765.40</b>	<b>\$ 3,729.05</b>	<b>\$ 3,144.99</b>
<b>DIVISIONAL TOTAL</b>	<b>\$ 832,993.61</b>						

**Table 3. Regional expenditures for noxious weed management by division for Montana Fish, Wildlife & Parks FY2024 (Administrative Facilities and State Weed Coordination Costs not shown)**

# Region 1 FY24 Noxious Weed Management Report Wildlife Management Areas

Site Name	Acres	Co #s	Co. WMP* Y/N	Site Percent Infested	Weed Species	Infested Acres	Chem. Treatment Acres	Mech. Treatment Acres	Insect Releases	Grazing Acres	Reveg. Acres
<b>Flathead County</b>											
North Shore WMA	427	7	Y	13%	1,4,6,0	56	35	-	-	-	-
Ray Kuhns	1,530	7	Y	13%	1,2,4,14	199	45	-	-	-	-
Hay Creek FCA	51	7	Y	14%	3,4,6,13,0	7	-	-	-	-	-
Ospery View FCA	71	7	Y	13%	1,3,4,13,0	9	2	-	-	-	-
Foys Bend FCA	245	7	Y	13%	1,3,4,6,13,0	32	30	20	-	-	-
Otter Island FCA	167	7	Y	13%	1,4,6,13	22	-	-	-	-	-
Bad Rock Canyon	779	7	Y	13%	1,4,6,18	101	25	-	-	-	-
<b>Lake County</b>											
Ninepipe	4,223	15	Y	59%	1,3,4,5,6,7,9,10,11,12, 13, 14,18,21,23,25,29	2,500	260	-	-	-	-
North Swan WMA	1,892	15	Y	13%	1,4,6,11,13,0	246	-	-	-	-	-
Pablo	194	15	Y	13%	1,3,4,7,0	25	-	-	-	-	-
North Swan Valley FCA	487	15	Y	13%	1,3,4,6,13,0	63	-	-	-	-	-
<b>Lincoln County</b>											
Kootenai Falls	172	56	Y	13%	1,3,4,6,11,13,18,19,32	22	1	-	-	-	-
West Kootenai	920	56	Y	13%	1,4	120	-	-	-	-	-
Woods Ranch	1,474	56	Y	13%	1,6,7,11,0	192	15	-	-	-	-
<b>Sanders County</b>											
Bull River	1,585	35	Y	13%	1,4,6,11,13,18,19	206	-	-	-	-	-
Full Curl	438	35	Y	13%	1,2,4,6	57	-	-	-	-	-
Sheep Viewing	49	35	Y	13%	1,6,13,0	6	-	-	-	-	-
Mount Silcox	1,552	35	Y	13%	1,2,3,4,5,6,7,11,23,28, 0	202	-	-	-	-	-
Roundhorn	27	35	Y	15%	1,11	4	-	-	-	-	-
<b>WMA Totals</b>	<b>16,284</b>			<b>16%</b>		<b>4,069</b>	<b>413</b>	<b>20</b>	<b>0</b>	<b>0</b>	<b>0</b>

<u>Weed Species Key</u>		
1 = Spotted Knapweed	10 = Whitetop	19 = Tansy Ragwort
2 = Leafy Spurge	11 = St. Johnswort	20 = Meadow Hawkweed
3 = Dalmation Toadflax	12 = Common Tansy	21 = Tall Buttercup
4 = Canada Thistle	13 = Oxeye Daisy	22 = Perennial Pepperweed
5 = Field Bindweed	14 = Yellow Toadflax	23 = Ventenata
6 = Houndstongue	15 = Saltcedar (Tamarisk)	24 = Common Buckthorn
7 = Sulfur Cinquefoil	16 = Hoary Alyssum	25 = Yellowflag Iris
8 = Diffuse Knapweed	17 = Curlyleaf Pondweed	26 = Flowering Rush
9 = Russian Knapweed	18 = Orange Hawkweed	27 = Eurasian watermilfoil
		28 = Blueweed
		29 = Purple Loosestrife
		30 = Knotweed Complex
		31 = Scotch Broom
		32 = Rush Skeletonweed
		33 = Yellow Starthistle
		34 = Dyer's Woad
		35 = Common Reed (Pharagmites)
		36 = Medushead
0 = County Listed Weed		
*Co WMP = County Weed Management Plan		

## Region 1 FY24 Noxious Weed Management Report Fishing Access Sites

Site Name	Acres	Co #s	Co.	Site	Weed	Infested	Chem.	Mech.	Insect	Grazing	Reveg.
			WMP*	Percent							
<b><u>Flathead County</u></b>											
Beaver Lake	2	7	Y	1%	4,13	0.01	0.001	-	-	-	-
Bigfork	1	7	Y	0%	-	0	0.001	-	-	-	-
Blanchard Lake	10	7	Y	7%	1,4,13,14,18	0.75	0.75	-	-	-	-
Echo Lake	5	7	Y	5%	1,4,6,13,18	0.25	0.25	-	-	-	-
Kokanee Bend	187	7	Y	11%	1,2,4,11,14	20	20	-	-	-	-
Mcwenneger Slough	21	7	Y	1%	1,4,6,0	0.25	0.1	0.25	-	-	-
Old Steel Bridge	126	7	Y	12%	1,2,4,6,12,13,14,18	15	18	5	-	-	-
Pauls Memorial	10	7	Y	3%	1,4,11,13,14	0.33	0.33	0.3	-	-	-
Pine Grove Pond	28	7	Y	36%	4,5,6,14	10	10	3	-	-	-
Pressentine	11	7	Y	5%	1,2,6,13	0.5	0.5	-	-	-	-
Shady Lane Pond	5	7	Y	5%	1,4,6	0.25	0.25	0.25	-	-	-
Skyles Lake	1	7	Y	7%	1,13,14,18	0.1	0.01	-	-	-	-
Smith Lake	3	7	Y	8%	1,4,6,14	0.25	0.2	0.25	-	-	-
Somers	2	7	Y	5%	1,4,6	0.1	0.2	0.1	-	-	-
Sportsman's Bridge	6	7	Y	4%	1,4,6	0.25	0.25	0.25	-	-	-
Teakettle	3	7	Y	8%	5,6,14	0.25	0.25	0.25	-	-	-
Whitefish River	6	7	Y	2%	4,6	0.1	0.1	-	-	-	-
<b><u>Lake County</u></b>											
Ducharme	51	15	Y	0%	1,26	0.1	0.01	-	-	-	-
Horseshoe Lake/Ferndale	23	15	Y	1%	1,4,11,12,13,18,20	0.2	0.2	-	-	-	-
Swan River	59	15	Y	26%	1,4,6,11,13,18,20	15	25	-	-	-	-
Walstad Memorial	1	15	Y	9%	1,4,6	0.1	0.01	0.05	-	-	-
Woods Bay	12	15	Y	2%	1,4,6	0.2	0.2	-	-	-	-
Conclow	15	15	Y	84%	1,4,6,10,0	12.5	0.4	-	-	-	-

# Region 1 FY24 Noxious Weed Management Report Fishing Access Sites

## Continued

Site Name	Acres	Co #s	Co.	Site	Weed	Infested	Chem.	Mech.	Insect	Grazing	Reveg.
			WMP*	Percent							
<b>Lincoln County</b>											
Glen Lake	2	56	Y	6%	1,4,6,13	0.1	0.01	0.1	-	-	-
Island Lake	38	56	Y	1%	1,4,6,13,18,20	0.25	0.9	0.1	-	-	-
Loon Lake/Eureka	1	56	Y	-	*	*	-	-	-	-	-
Marl Lake	3	56	Y	-	*	0.39	-	-	-	-	-
Moran Lake	-	56	Y	-	*	*	-	-	-	-	-
Savage Lake	6	56	Y	-	*	0.78	-	-	-	-	-
Sophie Lake	18	56	Y	1%	4	0.1	0.01	-	-	-	-
Tetrault Lake	8	56	Y	3%	1,4	0.25	-	-	-	-	-
<b>Sanders County</b>											
Kookoosint	2	35	Y	5%	1,0	0.1	-	-	-	-	-
McKay Landing	0.05	35	Y	20%	-	0.01	-	-	-	-	-
Paradise Crossing	13	35	Y	2%	5,6,0	0.25	-	0.25	-	-	-
Flatiron Ridge	12	35	Y	13%	1,0	1.5	-	-	-	-	-
Confluentious	3	35	Y	67%	1,0	2	-	-	-	-	-
<b>FAS Totals</b>	<b>689</b>			<b>11%</b>		<b>82</b>	<b>78</b>	<b>10</b>	<b>0</b>	<b>0</b>	<b>0</b>

\* = Site inaccessible number of infested acres & species unknown

<u>Weed Species Key</u>		
1 = Spotted Knapweed	10 = Whitetop	19 = Tansy Ragwort
2 = Leafy Spurge	11 = St. Johnswort	20 = Meadow Hawkweed
3 = Dalmation Toadflax	12 = Common Tansy	21 = Tall Buttercup
4 = Canada Thistle	13 = Oxeye Daisy	22 = Perennial Pepperweed
5 = Field Bindweed	14 = Yellow Toadflax	23 = Ventenata
6 = Houndstongue	15 = Saltcedar (Tamarisk)	24 = Common Buckthorn
7 = Sulfur Cinquefoil	16 = Hoary Alyssum	25 = Yellowflag Iris
8 = Diffuse Knapweed	17 = Curlyleaf Pondweed	26 = Flowering Rush
9 = Russian Knapweed	18 = Orange Hawkweed	27 = Eurasian watermilfoil
		0 = County Listed Weed
		28 = Blueweed
		29 = Purple Loosestrife
		30 = Knotweed Complex
		31 = Scotch Broom
		32 = Rush Skeletonweed
		33 = Yellow Starthistle
		34 = Dyer's Woad
		35 = Common Reed (Pharagmites)
		36 = Medushead

\*Co WMP = County Weed Management Plan

# Region 1 FY24 Noxious Weed Management Report Parks

Site Name	Acres	Co #s	Co. WMP* Y/N	Site Percent Infested	Weed Species	Infested Acres	Chem. Treatment Acres	Mech. Treatment Acres	Insect Releases	Grazing Acres	Reveg. Acres
<b>Flathead County</b>											
Flathead Lake/Wayfarers	67	7	Y	52%	1,4,5,6,11,13,18,20	35	15	2.5	-	-	-
Les Mason	8	7	Y	40%	1,4,6,13,18,20	3	0.5	0.5	-	-	-
Lone Pine	271	7	Y	74%	1,3,4,5,6,11,13,18,20,0	200	0.8	4	-	-	-
Thompson Chain of Lakes	510	7	Y	59%	1,4,6,11,12,13,14,18,20	300	0.3	6	-	-	-
Whitefish Lake	10	7	Y	19%	1,4,5,6,13,18,20	2	1	2	-	-	-
Somers Beach	105	7	Y	19%	1,4,6,13,14,20	20	0.1	1	-	-	-
<b>Lake County</b>											
Flathead Lake/Big Arm	217	15	Y	37%	1,2,3,4,5,6,13	80	0.9	6	-	-	-
Flathead Lake/Finley Pt.	28	15	Y	4%	1,4,6,13	1	1.5	1	-	-	-
Flathead Lake/ W. Shore	129	15	Y	15%	1,2,4,6,13	20	0.3	1	-	-	-
Flathead Lake/Wild Horse	2,164	15	Y	42%	1,2,4,6	900	0.2	-	-	-	-
Flathead Lake/Yellow Bay	15	15	Y	7%	1,4,6,13,18,20	1	0	1	-	-	-
Lake Mary Ronan	120	15	Y	21%	1,2,4,6,13	25	0.4	2	-	-	-
<b>Lincoln County</b>											
Logan	18	56	Y	40%	1,4,6,11,13,18,20	7	0.5	3	-	-	-
Thompson Chain of Lakes	2,251	56	Y	60%	1,4,6,7,11,12,13,18,20	1,350	0.6	-	-	-	-
<b>Sanders County</b>											
Thompson Chain of Lakes	230	35	Y	65%	1,4,6,7,11,12,13,18,20,0	150	-	-	-	-	-
Thompson Falls	41	35	Y	24%	1,2,4,6,7,11,12,13,18,20,0	10	10	3	-	-	-
<b>Parks Totals</b>	<b>6,183</b>			<b>36%</b>		<b>3,104</b>	<b>33</b>	<b>33</b>	<b>0</b>	<b>0</b>	<b>0</b>

<b>Weed Species Key</b>					
1 = Spotted Knapweed	7 = Sulfur Cinquefoil	13 = Ox-eye Daisy	19 = Tansy Ragwort	25 = Yellowflag Iris	31 = Scotch Broom
2 = Leafy Spurge	8 = Diffuse Knapweed	14 = Yellow Toadflax	20 = Meadow Hawkweed	26 = Flowering Rush	32 = Rush Skeletonweed
3 = Dalmation Toadflax	9 = Russian Knapweed	15 = Saltcedar (Tamarisk)	21 = Tall Buttercup	27 = Eurasian Watermilfoil	33 = Yellow Starthistle
4 = Canada Thistle	10 = Whitetop	16 = Hoary Alysum	22 = Perennial Pepperweed	28 = Blueweed	34 = Dyer's Woad
5 = Field Bindweed	11 = St. Johnswort	17 = Curlyleaf Pondweed	23 = Ventenata	29 = Purple Loosestrife	35 = Common Reed (Phragmites)
6 = Houndstongue	12 = Common Tansy	18 = Orange Hawkweed	24 = Common Buckthorn	30 = Knotweed Complex	36 = Medushead
0 = County Listed Weed					
*Co WMP = County Weed Management Plan					

## Region 2 FY24 Noxious Weed Management Report Wildlife Management Areas

Site Name	Acres	Co #s	Co.	Site	Weed	Infested	Chem.	Mech.	Insect	Grazing	Reveg.
			WMP*	Percent							
<b><u>Deer Lodge County</u></b>											
Blue-Eyed Nellie	194	30	Y	13%	1,2,4	25	-	-	-	-	-
Stucky Ridge	296	30	Y	10%	1,4,6,14,0	30	-	-	-	-	-
Garrity Mountain	10,115	30	Y	10%	1,2,4,18,28	1,011	104	39	-	-	-
Lost Creek	1,403	30	Y	15%	1,2	215	-	-	-	-	-
Warm Springs	4,214	30	Y	15%	1,2,4,14,22,24,0	630	31	20	-	-	-
<b><u>Mineral County</u></b>											
Fish Creek	35,041	54	Y	24%	1,2,4,6,7,11,13,20,23,0	8,500	2,152	-	193	-	-
<b><u>Missoula County</u></b>											
Blackfoot/Clearwater	17,657	4	Y	11%	1,2,3,6,10,11,23,0	2,000	986	-	-	-	-
Marshall Creek	24,811	4	Y	4%	1,4,6,11,13,20	1,000	-	-	-	-	-
Mount Jumbo	120	4	Y	8%	1,2,3,4,6,11	10	-	-	-	-	-
<b><u>Powell County</u></b>											
Aunt Molly	1,184	28	Y	4%	1,3,4,0	50	-	-	-	-	-
Blackfoot/Clearwater	10,567	28	Y	14%	1,2,3,4,6,0	1,453	-	10	5	-	-
Nevada Lake	1,500	28	Y	20%	1,4,6,10,0	300	-	1	-	-	-
Spotted Dog	37,877	28	Y	9%	1,2,4,6,14,22,0	3,500	469	-	-	-	13
<b><u>Ravalli County</u></b>											
Calf Creek	2,403	13	Y	21%	1,3,4,6,0	500	-	-	-	-	-
Three-Mile	6,384	13	Y	15%	1,2,4,6,0	950	-	-	-	-	-
<b>WMA Totals</b>	<b>153,766</b>			<b>13%</b>		<b>20,174</b>	<b>3,778</b>	<b>70</b>	<b>198</b>	<b>0</b>	<b>13</b>

<b>Weed Species Key</b>				
1 = Spotted Knapweed	7 = Sulfur Cinquefoil	13 = Ox-eye Daisy	19 = Tansy Ragwort	25 = Yellowflag Iris
2 = Leafy Spurge	8 = Diffuse Knapweed	14 = Yellow Toadflax	20 = Meadow Hawkweed	26 = Flowering Rush
3 = Dalmation Toadflax	9 = Russian Knapweed	15 = Saltcedar (Tamarisk)	21 = Tall Buttercup	27 = Eurasian Watermilfoil
4 = Canada Thistle	10 = Whitetop	16 = Hoary Alysum	22 = Perennial Pepperweed	28 = Blueweed
5 = Field Bindweed	11 = St. Johnswort	17 = Curlyleaf Pondweed	23 = Ventenata	29 = Purple Loosestrife
6 = Houndstongue	12 = Common Tansy	18 = Orange Hawkweed	24 = Common Buckthorn	30 = Knotweed Complex
		0 = County Listed Weed		31 = Scotch Broom
				32 = Rush Skeletonweed
				33 = Yellow Starthistle
				34 = Dyer's Woad
				35 = Common Reed (Phragmites)
				36 = Medushead

**\*Co WMP = County Weed Management Plan**

## Region 2 FY24 Noxious Weed Management Report Fishing Access Sites

Site Name	Acres	Co #s	Co.	Site	Weed	Infested	Chem.	Mech.	Insect	Grazing	Reveg.
			WMP*	Percent							
			Y/N		Species	Acres	Acres	Acres	Acres	Acres	Acres
<b><u>Deer Lodge County</u></b>											
Stuart Mill Bay	362	30	Y	4%	4,6	15	2	2	-	-	-
<b><u>Granite County</u></b>											
Bearmouth	31	46	Y	6%	1,2,4,6,12	2	2	1	-	-	-
Drummond	11	46	Y	17%	1	2	-	2	-	-	-
Medicine Tree	418	46	Y	24%	1,3,4	100	-	-	-	-	-
West Slope	*	46	Y	-	1	0.5	1	1	-	-	-
<b><u>Mineral County</u></b>											
Natural Pier	*	54	Y	-	1,2,7	5	1	2	-	-	-
St. Johns	87	54	Y	6%	4	5	8	2	-	-	-
Cyr Bridge	10	54	Y	20%	1	2	2	3	-	-	-
Big Pine	19	54	Y	21%	1,4,6	4	6	5	-	-	-
Forks	5	54	Y	60%	1,6	3	2	1	-	-	-
Tarkio East	6	54	Y	81%	1,2,3,7	5	4	-	-	-	-
Tarkio	14	54	Y	55%	1,2,3,7,14	8	8	1	-	-	-
Quartz	11	54	Y	46%	1,2	5	2	-	-	-	-
Forest Grove	6	54	Y	35%	1,2,4	2	2	2	-	-	-
Big Eddy	20	54	Y	75%	1,2	15	5	10	-	-	-
Sloway Riverfront	*	54	Y	-	-	-	1	-	-	-	-
Dry Creek	2	54	Y	50%	1	1	1	4	-	-	-
St. Regis	1	54	Y	100%	1,13	1	1	3	-	-	-
Alberton Gorge	325	54	Y	31%	1,2,3,7,14	100	22	-	-	-	-
<b><u>Missoula County</u></b>											
Bitterroot River North	113	4	Y	18%	1	20	1	-	-	-	-
Bitterroot River Parcel 4	3	4	Y	33%	1	1	-	-	-	-	-
Bitterroot River Parcel 4A-6	38	4	Y	53%	1	20	-	-	-	-	-
Bitterroot River Parcel 4A-7	4	4	Y	47%	1	2	-	-	-	-	-
Bitterroot River Parcel 5B	18	4	Y	55%	1	10	-	-	-	-	-
Buck House Bridge	3	4	Y	18%	1	0.5	-	-	-	-	-
Lolo	54	4	Y	20%	1,2,6	11	-	-	-	-	-
Chief Looking Glass	13	4	Y	31%	1,2,6	4	4	18	-	-	-
Angevine	13	4	Y	38%	1,2,3,4,6,13	5	2	8	-	-	-
Belmont Creek	*	4	Y	-	1,4,6	-	-	-	-	-	-
Corrick's River Bend	32	4	Y	63%	1,2,4,6	20	3	1	-	-	-

\* = Leased Property, FWP not responsible for noxious weed control

## Region 2 FY24 Noxious Weed Management Report Fishing Access Sites Continued

Site Name	Acres	Co #s	Co.	Site	Weed	Infested	Chem.	Mech.	Insect	Grazing	Reveg.
			WMP*	Percent							
<b><u>Missoula County</u></b>											
Daigles Eddy	*	4	Y	-	1,2	10	-	1	-	-	-
Harper's Lake	100	4	Y	52%	1,2,4,6,11	52	8	6	-	-	-
Johnsrud Park	18	4	Y	28%	1,2	5	3	2	-	-	-
K. Ross Toole	29	4	Y	17%	1,12	5	1	0.5	-	-	-
Marco Flats	2	4	Y	67%	1,2,13	1	1	0.5	-	-	-
Ninemile Prairie	14	4	Y	81%	1,2,6	11	-	2	-	-	-
Red Rocks	*	4	Y	-	1,4	0.5	-	1	-	-	-
Roundup	4	4	Y	143%	1,6	5	1	1	-	-	-
Sheep Flats	*	4	Y	-	1,2,4	5	-	1	-	-	-
Sunset Hill 3 Stall	0.1	4	Y	0%	1	0	-	0.5	-	-	-
Thibodeau	*	4	Y	-	1,4	1.5	-	3	-	-	-
Thibodeau Rapids	*	4	Y	-	-	0	-	0.5	-	-	-
Weigh Station	6	4	Y	85%	1,2,3,12	5	2	5	-	-	-
Whitaker Bridge	*	4	Y	-	1,4	1	-	1	-	-	-
Russell Gates Memorial	41	4	Y	34%	1,2,3,6	14	3	16	-	-	-
Beavertail Pond	54	4	Y	75%	1,2,3,4,6	40	1	3	-	-	-
Petty Creek	19	4	Y	52%	1,2,4,6	10	1	4	-	-	-
Deep Creek	36	4	Y	83%	1,2	30	-	-	-	-	-
Erskine	427	4	Y	23%	1,2,4,6,12	100	10	3	-	-	-
Kelly Island	706	4	Y	21%	1,2,3,4	150	8	4	-	-	-
Schwartz Creek	14	4	Y	29%	1,2,12	4	1	5	-	-	-
Sha-Ron	2	4	Y	5%	1,2,4,8,10	0.1	1	3	-	-	-
Turah	24	4	Y	8%	1,3,12	2	1	3	-	-	-
Clearwater Br. - 6 Stall	1	4	Y	14%	1	0.1	-	1	-	-	-
Clearwater Crossing	*	4	Y	-	1,4,6	5	2	10	-	-	-
Tamarack	*	4	Y	-	1,4	1	-	-	-	-	-
Admin. Sites (FWP HQ)	14	4	Y	35%	1	5	-	20	-	-	-
Kona Bridge	3	4	Y	40%	1,7	1	1	3	-	-	-
Harper's Bridge	12	4	N	32%	1,2,12	4	2	3	-	-	-
Davids Place Bitt North	*	4	N	-	1,2	0	-	-	-	-	-

\* = Leased Property, FWP not responsible for noxious weed control



## Region 2 FY24 Noxious Weed Management Report Fishing Access Sites Continued

Site Name	Acres	Co #s	Co. WMP* Y/N	Site Percent Infested	Weed Species	Infested Acres	Chem. Treatment Acres	Mech. Treatment Acres	Insect Releases	Grazing Acres	Reveg. Acres
<b><u>Powell County</u></b>											
Brown's Lake	77	28	Y	10%	1,4,9,10	8	8	30	-	-	-
Cedar Meadow	3	28	Y	34%	2,4	1	1	2	-	-	-
Gold Creek	6	28	Y	56%	2,4	3.5	2	2	-	-	-
Harry Morgan	65	28	Y	11%	1,4,6,7	7	3	4	-	-	-
Lincoln Canyon	8	28	Y	40%	1,4	3	-	-	-	-	-
Monture	112	28	Y	12%	1,2,6,14	13	5	12	-	-	-
River Junction	131	28	Y	2%	1,2,4,6	2	8	4	-	-	-
Upsata Lake	11	28	Y	44%	1,4,6	5	2	10	-	-	-
Kohrs Bend	8	28	Y	37%	1,2,4	3	-	2	-	-	-
Scotty Brown Bridge	1	28	Y	93%	1,6	1	-	1	-	-	-
Racetrack Pond	20	28	y	10%	1,2,4	2	3	4	-	-	-
Little Blackfoot	3	28	Y	30%	1,4,13	1	1	1	-	-	-
<b><u>Ravalli County</u></b>											
Angler's Roost	*	13	Y	-	-	-	-	-	-	-	-
Florence Bridge	9	13	Y	23%	1,7,12	2	2	4	-	-	-
Florence Bridge North	3	13	Y	20%	1,2,6,13	0.5	-	-	-	-	-
Poker Joe	12	13	Y	26%	1,4,12	3	3	2	-	-	-
Bass Creek	23	13	Y	22%	1,4,7	5	2	4	-	-	-
Bell Crossing	65	13	Y	15%	1,2,4,6,7,11,12	10	4	2	-	-	-
Tucker Crossing	250	13	Y	22%	1,4,6,11	55	1	3	-	-	-
Woodside Bridge	3	13	Y	58%	1,2,12	2	2	1	-	-	-
Demmons	1	13	Y	100%	1,6,11	1	1	1	-	-	-
Wally Crawford	2	13	Y	89%	1,4	1.5	1	1	-	-	-
Darby Bridge	4	13	Y	53%	1,6,13,16,21,28	2	2	5	-	-	-
Hannon Memorial	54	13	Y	19%	1,4,6,13,16	10	10	11	-	-	-
Forest Cooper	3	13	Y	15%	1	0.5	1	1	-	-	-
WW White Memorial	2	13	Y	67%	1	1	-	1	-	-	-
Whittecar Rifle Range	31	13	Y	33%	1,7,11	10	-	-	-	-	-
Woodlot	20	13	Y	25%	1,4,6,14	5	-	-	-	-	-
<b>FAS Totals</b>	<b>4,068</b>			<b>39%</b>		<b>996</b>	<b>190</b>	<b>277</b>	<b>0</b>	<b>0</b>	<b>0</b>

## Region 2 FY24 Noxious Weed Management Report Parks

Site Name	Acres	Co #s	Co. WMP* Y/N	Site Percent Infested	Weed Species	Infested Acres	Chem. Treatment Acres	Mech. Treatment Acres	Insect Releases	Grazing Acres	Reveg. Acres
<b><u>Mineral County</u></b>											
Fish Creek SP	5,602	54	Y	13%	1,2,3,6,7,11,13	750	180	-	-	-	-
<b><u>Missoula County</u></b>											
Travelers Rest	64	4	Y	31%	1,2,4,6,12,13	20	40	124	-	-	-
Beavertail Hill	65	4	Y	8%	1,2,3,4,6	5	15	25	-	-	-
Council Grove	187	4	Y	27%	1,2,3,4,11,12	50	20	12	-	-	-
Frenchtown Pond	41	4	Y	12%	1,2,4,6	5	15	135	-	-	-
Placid Lake	31	4	Y	10%	1,4,6	3	10	5	-	-	-
Salmon Lake	42	4	Y	5%	1,4,6	2	8	5	-	-	-
Milltown	127	4	Y	24%	1,2,3,4,6,12,21	30	35	70	-	-	-
<b><u>Ravalli County</u></b>											
Fort Owen	2	13	Y	9%	1	0.2	1	18	-	-	-
Painted Rocks	23	13	Y	43%	1,4,13	10	10	2	-	-	-
<b>Parks Totals</b>	<b>6,185</b>			<b>18%</b>		<b>875</b>	<b>334</b>	<b>396</b>	<b>0</b>	<b>0</b>	<b>0</b>

<b><u>Weed Species Key</u></b>					
1 = Spotted Knapweed	7 = Sulfur Cinquefoil	13 = Ox-eye Daisy	19 = Tansy Ragwort	25 = Yellowflag Iris	31 = Scotch Broom
2 = Leafy Spurge	8 = Diffuse Knapweed	14 = Yellow Toadflax	20 = Meadow Hawkweed	26 = Flowering Rush	32 = Rush Skeletonweed
3 = Dalmation Toadflax	9 = Russian Knapweed	15 = Saltcedar (Tamarisk)	21 = Tall Buttercup	27 = Eurasian Watermilfoil	33 = Yellow Starthistle
4 = Canada Thistle	10 = Whitetop	16 = Hoary Alysum	22 = Perennial Pepperweed	28 = Blueweed	34 = Dyer's Woad
5 = Field Bindweed	11 = St. Johnswort	17 = Curlyleaf Pondweed	23 = Ventenata	29 = Purple Loosestrife	35 = Common Reed (Phragmites)
6 = Houndstongue	12 = Common Tansy	18 = Orange Hawkweed	24 = Common Buckthorn	30 = Knotweed Complex	36 = Medushead
0 = County Listed Weed					
*Co WMP = County Weed Management Plan					

# Region 3 FY24 Noxious Weed Management Report Wildlife Management Areas

Site Name	Acres	Co #s	Co. WMP* Y/N	Site Percent Infested	Weed Species	Infested Acres	Chem. Treatment Acres	Mech. Treatment Acres	Insect Releases	Grazing Acres	Reveg. Acres
<b><u>Beaverhead County</u></b>											
Robb Ledford	9,714	18	Y	9%	1,6	900	850	-	-	-	-
Gravelly-Blacktail	17,743	18	Y	2%	1,4,6,0	400	527	-	-	-	-
<b><u>Broadwater County</u></b>											
Canyon Ferry WMA	5,129	43	Y	10%	1,2,3,4,5,6,8,9,10,12,13,14,16,17,22,25,26,27,32,35,0	500	122	-	-	-	-
<b><u>Butte-Silverbow County</u></b>											
Fleecer Mountain	7,579	1	Y	13%	1,2,4,6,9,10,0	1,000	853	-	-	-	-
Mt. Haggin	9,614	1	Y	17%	1,2,4,10,0	1,600	860	-	-	-	-
<b><u>Deer Lodge County</u></b>											
Mt. Haggin	49,214	30	Y	17%	1,2,4,10,0	8,400	860	-	-	-	-
<b><u>Gallatin County</u></b>											
Gallatin	8,611	6	Y	3%	1,6,0	250	395	-	-	-	-
<b><u>Lewis &amp; Clark County</u></b>											
Canyon Creek	3,090	5	Y	10%	1,6,0	300	255	-	-	-	-
Lake Helena	349	5	Y	14%	1,9,10,0	50	0.1	-	-	-	-
<b><u>Madison County</u></b>											
Bear Creek	3,458	25	Y	7%	1,6,14,0	250	194	-	-	-	-
Wall Creek	7,698	25	Y	2%	1,2,6,0	150	1,046	-	-	-	-
Robb Ledford	18,383	25	Y	5%	1,4,6,0	1,000	1	-	-	-	-
<b><u>Park County</u></b>											
Dome Mt	4,813	49	Y	4%	1,4,6,0	200	505	-	-	-	-
<b>WMA Totals</b>	<b>145,396</b>			<b>9%</b>		<b>15,000</b>	<b>6,468</b>	<b>0</b>	<b>0</b>	<b>0</b>	<b>0</b>

<b>Weed Species Key</b>					
1 = Spotted Knapweed	7 = Sulfur Cinquefoil	13 = Ox-eye Daisy	19 = Tansy Ragwort	25 = Yellowflag Iris	31 = Scotch Broom
2 = Leafy Spurge	8 = Diffuse Knapweed	14 = Yellow Toadflax	20 = Meadow Hawkweed	26 = Flowering Rush	32 = Rush Skeletonweed
3 = Dalmation Toadflax	9 = Russian Knapweed	15 = Saltcedar (Tamarisk)	21 = Tall Buttercup	27 = Eurasian Watermilfoil	33 = Yellow Starthistle
4 = Canada Thistle	10 = Whitetop	16 = Hoary Alysum	22 = Perennial Pepperweed	28 = Blueweed	34 = Dyer's Woad
5 = Field Bindweed	11 = St. Johnswort	17 = Curlyleaf Pondweed	23 = Ventenata	29 = Purple Loosestrife	35 = Common Reed (Phragmites)
6 = Houndstongue	12 = Common Tansy	18 = Orange Hawkweed	24 = Common Buckthorn	30 = Knotweed Complex	36 = Medushead
0 = County Listed Weed					
*Co WMP = County Weed Management Plan					

## Region 3 FY24 Noxious Weed Management Report Fishing Access Sites

Site Name	Acres	Co #s	Co. WMP* Y/N	Site Percent Infested	Weed Species	Infested Acres	Chem. Treatment Acres	Mech. Treatment Acres	Insect Releases	Grazing Acres	Reveg. Acres
<b><u>Beaverhead County</u></b>											
Blacktail Meadows	14	18	Y	13%	1,4,6,10,0	1.85	1.5	-	-	-	-
Corrals	3	18	Y	13%	1,6,10	0.325	0.375	-	-	-	-
Fishtrap Creek	41	18	Y	1%	-	0.5	21	-	-	-	-
Grasshopper	1	18	Y	7%	1,4,6	0.1	0.375	-	-	-	-
Henneberry	601	18	Y	0%	1,4,6,10,0	1	6.75	-	-	-	-
High Bridge	10	18	Y	13%	1,6,0	1.5	0.375	-	-	-	-
Pipe Organ	6	18	Y	2%	1,4,6	0.1	0.1	-	-	-	-
Kalsta Bridge	5.88	18	Y	9%	1,4,5,6	0.5	-	-	-	-	-
Poindexter Slough	408	18	Y	13%	1,4,5,6,10,0	53	15.25	-	-	-	-
George Grant Memorial	4	18	Y	2%	4	0.1	2	-	-	-	-
Maidenrock	196	18	Y	1%	1,4,6,16	2	1	-	-	-	-
Glen	8	18	Y	1%	1,4,6,10,12,13,16	0.1	3	-	-	-	-
Salmon Fly	12	18	Y	1%	5,10,13	0.1	7	-	-	-	-
Greenwood Bottoms	6	18	Y	13%	1,6,13,14	0.8	-	-	-	-	-
Cornell Park	3.5	18	Y	14%	1,3,4,6	0.5	-	-	-	-	-
<b><u>Broadwater County</u></b>											
Indian Road	15	43	Y	13%	-	2	-	-	-	-	-
Toston	3	43	Y	58%	2,4,6	2	0.5	-	-	-	-
York Islands	16	43	Y	1%	1,4,6,10	0.2	0.1	-	-	-	-
<b><u>Butte-Silverbow County</u></b>											
Powerhouse	35	1	Y	0%	1	0.1	.025	-	-	-	-
<b><u>Deer Lodge County</u></b>											
Fishtrap Creek	42	30	Y	1%	1,10,16	0.5	5	-	-	-	-
Sportsman Park	21	30	Y	10%	1,4,6,7	2	-	-	-	-	-
<b><u>Gallatin County</u></b>											
Axtell Bridge	4	6	Y	5%	1,4	0.2	1	-	-	-	-
Bud Lilly	3	6	Y	13%	2	0.33	1	-	-	-	-
Cameron Bridge	153	6	Y	13%	1,4,6,10,12,13,16	20	9	-	-	-	-
Cherry River	76	6	Y	13%	1,2,4,6,12,16	10	-	-	-	-	-
Erwin Bridge	72	6	Y	17%	1,4,6,13,16	12	10.5	-	-	-	-

## Region 3 FY24 Noxious Weed Management Report Fishing Access Sites Continued

Site Name	Acres	Co #s	Co. WMP* Y/N	Site Percent Infested	Weed Species	Infested Acres	Chem. Treatment Acres	Mech. Treatment Acres	Insect Releases	Grazing Acres	Reveg. Acres
<b><u>Gallatin County</u></b>											
Four Corners	9	6	Y	2%	1,2,4,6,10,12	0.2	4	-	-	-	-
Gallatin Forks	271	6	Y	0%	1,4,5,6,10	0.8	1	-	-	-	-
Kirk Wildlife Refuge	17	6	Y	17%	1,6,12	3	-	-	-	-	-
Shed's Bridge	8	6	Y	13%	1,4,6,10,12,16	1	1	-	-	-	-
Drouillard	41	6	Y	3%	1,2,3,4,6,10	1	12.75	-	-	-	-
Williams' Bridge	2	6	Y	7%	1,2,4,6,10	0.15	0.25	-	-	-	-
Blackbird	22	6	Y	4%	1,2,4,5,6,10	0.8	10	-	-	-	-
Blacks Ford	10	6	Y	1%	1,5,6,16	0.1	3.5	-	-	-	-
Cobblestone	190	6	Y	8%	1,2,4,6,16	16	28	-	-	-	-
Greycliff	552	6	Y	5%	1,2,4,5,6,16	30	44	-	-	-	-
Milwaukee	7	6	Y	1%	1,2,3,4,6,16	0.1	1.5	-	-	-	-
Fairweather	719	6	Y	0%	1,2,3,4,5,6,10,12,16	0.3	94	-	-	-	-
<b><u>Jefferson County</u></b>											
Limespur	107	51	Y	0%	1,2,4,6	0.4	-	-	-	-	-
Mayflower Bridge	20	51	Y	5%	1,2,4,6	1	-	-	-	-	-
Parrot Castle	33	51	Y	8%	1,2,4,6	3	0.25	-	2.25	-	-
Piedmont Pond	21	51	Y	1%	1,2,4,5	0.25	1	-	-	-	-
Sappington Bridge	1	51	Y	60%	-	0.6	-	-	-	-	-
<b><u>Madison County</u></b>											
Brownes Bridge	10	25	Y	1%	1,4	0.1	0.2	-	-	-	-
Notch Bottom	12	25	Y	2%	4,6	0.2	0.4	-	-	-	-
Pennington Bridge	2	25	Y	3%	-	0.05	-	-	-	-	-
Cardwell	6	25	Y	6%	-	0.35	0.5	-	-	-	-
Harrison Lake	40	25	Y	3%	1,4,5,6,16	1.35	0.5	-	-	-	-
Hell's Canyon	4	25	Y	6%	1,4,10	0.22	0.5	-	-	-	-

## Region 3 FY24 Noxious Weed Management Report Fishing Access Sites Continued

Site Name	Acres	Co #s	Co.	Site	Weed	Infested	Chem.	Mech.	Insect	Grazing	Reveg.
			WMP*	Percent							
			Y/N	Infested		Acres	Acres	Acres		Acres	Acres
<b><u>Madison County</u></b>											
Kountz Bridge	38	25	Y	2%	1,4,6	0.8	1.8	-	-	-	-
Silver Star	24	25	Y	13%	1,4	3	0.2	-	-	-	-
Burnt Tree Hole	29	25	Y	3%	1,4,6,10,16	0.8	0.2	-	-	-	-
Damselfly	2	25	Y	44%	1,2,4,6,16	1	-	-	-	-	-
Eight Mile Ford	30	25	Y	1%	1,4,6	0.3	0.2	-	-	-	-
Ennis	77	25	Y	10%	1,4,6,12	8	0.4	-	-	-	-
Lyon's Bridge	3	25	Y	17%	1,6,16	0.5	0.8	-	-	-	-
McAtee Bridge	6	25	Y	9%	1,4,6,16	0.5	0.5	-	-	-	-
Meadow Lake	8	25	Y	2%	5,16	0.2	0.2	-	-	-	-
Raynolds' Pass	169	25	Y	18%	1,3,4,6,13,16	30	1.5	-	-	-	-
Three Dollar Bridge	100	25	Y	10%	1,4,6,10,16	10	0.2	-	-	-	-
Valley Garden	143	25	Y	31%	1,4,5,6	45	0.4	-	-	-	-
Varney Bridge	8	25	Y	10%	1,4,6,10,16	0.8	0.5	-	-	-	-
Alder Bridge	12	25	Y	13%	-	1.56	-	-	-	-	-
Ruby Dam	2	25	Y	50%	1,4,6,10	1	0.6	-	-	-	-
Ruby Island	45	25	Y	13%	-	5.84	-	-	-	-	-
Silver Springs Bridge	21	25	Y	13%	4,6,10	2.73	-	-	-	-	-
Vigilante	69	25	Y	14%	1,3,4,6,10,16	10	-	-	-	-	-
<b><u>Park County</u></b>											
Brogans Landing	1	49	Y	10%	-	0.1	-	-	-	-	-
Carter's Bridge	3	49	Y	18%	2,6,16	0.5	0.5	-	-	-	-
Chicory	2	49	Y	29%	4	0.5	0.5	-	-	-	-
Crystal Cross	27	49	Y	13%	1,6	3.5	-	-	2	-	-
Dailey Lake	242	49	Y	2%	-	6	4.5	-	-	-	-
Dan Bailey	3	49	Y	39%	1,6,16	1	1	-	-	-	-
Emigrant	3	49	Y	4%	-	0.1	0.5	-	-	-	-
Emigrant West	72	49	Y	13%	1,4,6,16	9	0.5	-	-	-	-
Free River	13	49	Y	13%	1,2,3,6,10,12,16	1.72	-	-	-	-	-
Grannis	1	49	Y	10%	2,4,6,13	0.1	-	-	1	-	-

## Region 3 FY24 Noxious Weed Management Report Fishing Access Sites Continued

Site Name	Acres	Co #s	Co. WMP* Y/N	Site Percent Infested	Weed Species	Infested Acres	Chem. Treatment Acres	Mech. Treatment Acres	Insect Releases	Grazing Acres	Reveg. Acres
<b><u>Park County</u></b>											
Grey Owl	34	49	Y	15%	1,2,3,4,5,6	5	2	-	-	-	-
HWY 89 Bridge	2	49	Y	27%	1,4,6,16	0.5	0.5	-	-	-	-
Loch Leven	75	49	N	7%	1,2,4,5,6,12,16	5	4	-	-	-	-
Mallard's Rest	17	49	Y	18%	1,3,4,6,16	3	-	-	-	-	-
Pine Creek	2	49	Y	2%	1,4,6,16	0.05	0.5	-	-	-	-
Point of Rocks	59	49	N	26%	1,4,6	15	2.5	-	-	-	-
Queen of the Waters	10	49	N	13%	-	1.3	1	-	-	-	-
Sheep Mountain	7	49	Y	27%	2,4,6,10	2	1.5	-	-	-	-
Slip & Slide	14	49	N	7%	-	1	1	-	-	-	-
Springdale Bridge	16	49	Y	32%	1,2,4,5,16	5	2.5	-	-	-	-
Sunnybrook Spring	54	49	N	1%	1,4,6	0.5	0.5	-	-	-	-
<b>FAS Totals</b>	<b>5,306</b>			<b>11%</b>		<b>355</b>	<b>321</b>	<b>0</b>	<b>5.25</b>	<b>0</b>	<b>0</b>

<b><u>Weed Species Key</u></b>					
1 = Spotted Knapweed	7 = Sulfur Cinquefoil	13 = Ox-eye Daisy	19 = Tansy Ragwort	25 = Yellowflag Iris	31 = Scotch Broom
2 = Leafy Spurge	8 = Diffuse Knapweed	14 = Yellow Toadflax	20 = Meadow Hawkweed	26 = Flowering Rush	32 = Rush Skeletonweed
3 = Dalmation Toadflax	9 = Russian Knapweed	15 = Saltcedar (Tamarisk)	21 = Tall Buttercup	27 = Eurasian Watermilfoil	33 = Yellow Starthistle
4 = Canada Thistle	10 = Whitetop	16 = Hoary Alysum	22 = Perennial Pepperweed	28 = Blueweed	34 = Dyer's Woad
5 = Field Bindweed	11 = St. Johnswort	17 = Curlyleaf Pondweed	23 = Ventenata	29 = Purple Loosestrife	35 = Common Reed (Phragmites)
6 = Houndstongue	12 = Common Tansy	18 = Orange Hawkweed	24 = Common Buckthorn	30 = Knotweed Complex	36 = Medushead
0 = County Listed Weed					
<b>*Co WMP = County Weed Management Plan</b>					

# Region 3 FY24 Noxious Weed Management Report Parks

Site Name	Acres	Co #s	Co. WMP* Y/N	Site Percent Infested	Weed Species	Infested Acres	Chem. Treatment Acres	Mech. Treatment Acres	Insect Releases	Grazing Acres	Reveg. Acres
<b><u>Beaverhead County</u></b>											
Bannack	1,529	18	Y	0%	1,4,6	4	-	-	-	-	-
Clarks Lookout	7	18	Y	1%	1	0.1	-	-	-	-	-
<b><u>Deer Lodge County</u></b>											
Lost Creek SP	502	30	Y	0%	1,4	1	0.5	-	-	-	-
Anaconda Stack	12	30	Y	1%	1	0.1	0.5	-	-	-	-
<b><u>Gallatin County</u></b>											
Missouri Headwaters	532	6	Y	4%	1,2,3,4,5,6,10	21	72	-	-	-	-
Madison Buffalo Jump	638	6	Y	2%	4,10,0	12	141	-	-	-	-
<b><u>Granite County</u></b>											
Granite	0.7	46	Y	-	-	0	-	-	-	-	-
<b><u>Jefferson County</u></b>											
Lewis and Clark Caverns	2,920	51	Y	3%	1,2,4,6,0	78	350	-	-	-	-
<b><u>Madison County</u></b>											
Beaverhead Rock	71	25	Y	14%	1,4,6,10,0	10	37	-	-	-	-
<b>Parks Totals</b>	<b>6,213</b>			<b>3%</b>		<b>126</b>	<b>601</b>	<b>0</b>	<b>0</b>	<b>0</b>	<b>0</b>

<b>Weed Species Key</b>					
1 = Spotted Knapweed	7 = Sulfur Cinquefoil	13 = Ox-eye Daisy	19 = Tansy Ragwort	25 = Yellowflag Iris	31 = Scotch Broom
2 = Leafy Spurge	8 = Diffuse Knapweed	14 = Yellow Toadflax	20 = Meadow Hawkweed	26 = Flowering Rush	32 = Rush Skeletonweed
3 = Dalmation Toadflax	9 = Russian Knapweed	15 = Saltcedar (Tamarisk)	21 = Tall Buttercup	27 = Eurasian Watermilfoil	33 = Yellow Starthistle
4 = Canada Thistle	10 = Whitetop	16 = Hoary Alysum	22 = Perennial Pepperweed	28 = Blueweed	34 = Dyer's Woad
5 = Field Bindweed	11 = St. Johnswort	17 = Curlyleaf Pondweed	23 = Ventenata	29 = Purple Loosestrife	35 = Common Reed (Phragmites)
6 = Houndstongue	12 = Common Tansy	18 = Orange Hawkweed	24 = Common Buckthorn	30 = Knotweed Complex	36 = Medushead
0 = County Listed Weed					
*Co WMP = County Weed Management Plan					



## Region 4 FY24 Noxious Weed Management Report Wildlife Management Areas

Site Name	Acres	Co #s	Co. WMP* Y/N	Site Percent Infested	Weed Species	Infested Acres	Chem. Treatment Acres	Mech. Treatment Acres	Insect Releases	Grazing Acres	Reveg. Acres	
<b><u>Cascade County</u></b>												
Beartooth	7,330	2	Y	0%	1,2,3,4,6,7,10,14	10	-	-	-	-	-	
<b><u>Fergus County</u></b>												
Beckman	6,648	8	Y	1%	1,2,4,5,6,10,14,15,22, 0	90	81	-	12	-	-	
<b><u>Judith Basin County</u></b>												
Judith River	9,409	36	Y	1%	1,2,4,6,10,0	120	140	-	-	-	-	
<b><u>Lewis &amp; Clark County</u></b>												
Beartooth	28,440	5	Y	1%	1,2,3,4,6,7,10,14	325	31	-	1	-	-	
Sun River	19,776	5	Y	1%	1,2,4,6	180	146	-	22	-	-	
<b><u>Meagher County</u></b>												
Smith River	3,312	47	Y	2%	1,2,3,6,10	60	-	-	-	-	-	
<b><u>Pondera County</u></b>												
Marias River	1,934	26	Y	26%	2,4,6,9,10,22	500	50	-	-	-	-	
<b><u>Teton County</u></b>												
Blackleaf	10,714	31	Y	0%	1,2,4,6,13	20	60	10	-	-	-	
Ear Mountain	3,047	31	Y	0%	1,2,4,6	4	42	-	-	-	-	
Freezout Lake	11,530	31	Y	0%	1,2,4,6,8,10,22	46	695	5	-	-	-	
<b><u>Toole County</u></b>												
Marias River	5,870	21	Y	34%	1,2,4,6,9,10,22	2,000	359	-	-	-	-	
<b>WMA Totals</b>												
	<b>108,009</b>			<b>6%</b>			<b>3,355</b>	<b>1,604</b>	<b>15</b>	<b>35</b>	<b>0</b>	<b>0</b>

<b>Weed Species Key</b>					
1 = Spotted Knapweed	7 = Sulfur Cinquefoil	13 = Ox-eye Daisy	19 = Tansy Ragwort	25 = Yellowflag Iris	31 = Scotch Broom
2 = Leafy Spurge	8 = Diffuse Knapweed	14 = Yellow Toadflax	20 = Meadow Hawkweed	26 = Flowering Rush	32 = Rush Skeletonweed
3 = Dalmation Toadflax	9 = Russian Knapweed	15 = Saltcedar (Tamarisk)	21 = Tall Buttercup	27 = Eurasian Watermilfoil	33 = Yellow Starthistle
4 = Canada Thistle	10 = Whitetop	16 = Hoary Alysum	22 = Perennial Pepperweed	28 = Blueweed	34 = Dyer's Wood
5 = Field Bindweed	11 = St. Johnswort	17 = Curlyleaf Pondweed	23 = Ventenata	29 = Purple Loosestrife	35 = Common Reed (Phragmites)
6 = Houndstongue	12 = Common Tansy	18 = Orange Hawkweed	24 = Common Buckthorn	30 = Knotweed Complex	36 = Medushead
0 = County Listed Weed					
*Co WMP = County Weed Management Plan					

## Region 4 FY24 Noxious Weed Management Report Fishing Access Sites

Site Name	Acres	Co #s	Co.	Site	Weed	Infested	Chem. Treatment	Mech. Treatment	Insect	Grazing	Reveg.
			WMP*	Percent							
<b><u>Cascade County</u></b>											
Big Bend	17	2	Y	29%	2,4,6	5	0.1	-	-	-	-
Cottonwood Grove	4	2	Y	25%	1,2,4,6	1	0.1	-	-	-	-
Devil's Kitchen	0.2	2	Y	50%	1,2,3,4,6	0.1	0.05	-	-	-	-
Dunes	61	2	Y	31%	1,2,4,6	19	-	-	-	-	-
Eagle Island	13	2	Y	76%	2	10	8	-	-	-	-
Fort Shaw	3	2	Y	31%	1,2,4	1	-	-	-	-	-
Hardy Bridge	15	2	Y	20%	1,3,4,6	3	0.05	-	-	-	-
Largent's Bend	163	2	Y	12%	1,2,4,6,10	20	0.5	-	-	-	-
Little Muddy Creek	22	2	Y	16%	1,2,4,6	3.5	0.91	-	-	-	-
Lower Smith River FAS	4	2	Y	24%	1,2,4,6	1	-	-	-	-	-
Medicine River	11	2	Y	95%	1,2,4,6	10	7.5	-	-	-	-
Mid Canon	9	2	Y	58%	1,2,4,6	5	-	-	-	-	-
Mountain Palace	0.3	2	Y	67%	1,2,3,4,6	0.2	0.05	-	-	-	-
Pelican Point	94	2	Y	6%	1,2,3,4,5	5.5	3.2	-	-	-	-
Prewett Creek	3	2	Y	35%	1,2,3,4,6	1	0.1	-	-	-	-
Truly Bridge	10	2	Y	10%	1,2,4,6	1	-	-	-	-	-
Ulm Bridge	163	2	Y	7%	1,2,4,6,10	11.5	-	-	-	-	-
White Bear	41	2	Y	7%	1,2,4,6	3	-	-	-	-	-
Wing Dam	32	2	Y	2%	1,4	0.5	-	-	-	-	-
<b><u>Chouteau County</u></b>											
Carter Ferry	20	19	Y	25%	1,2,4	5	-	-	-	-	-
Loma Bridge	7	19	Y	29%	1,2,6	2	-	-	-	-	-
Widow Coulee	3	19	Y	36%	1,2,4	1	-	-	-	-	-
<b><u>Fergus County</u></b>											
Big Casino Reservoir	25	8	Y	13%	1,2,4,6	3.2	-	-	-	-	-
Brewery Flats	23	8	Y	13%	1,2,4,6	3	2	-	-	-	-
Brewery Flats North	0.2	8	Y	-	-	0	-	-	-	-	-
Carroll Trail	67	8	Y	6%	1,2,4,6	4	3.5	-	-	-	-
Hatchery FAS	3	8	Y	80%	1,6	2	1.75	-	-	-	-
Hruska	45	8	Y	4%	1,2,4,6	2	1.25	-	-	-	-
Lazy KB	13	8	Y	40%	1,2,4,6	5	3.25	-	-	-	-

## Region 4 FY24 Noxious Weed Management Report Fishing Access Sites Continued

Site Name	Acres	Co #s	Co. WMP*	Site Percent	Weed	Infested	Chem. Treatment	Mech. Treatment	Insect	Grazing	Reveg.
			Y/N	Infested	Species	Acres	Acres	Acres	Releases	Acres	Acres
<b><u>Fergus County</u></b>											
Lower Carter Pond	6	8	Y	16%	1,2,4,6	1	0.75				
Mountain Acres	6	8	Y	16%	1,2,4	1	1	-	-	-	-
Reed & Bowles	50	8	Y	6%	1,2,4,6	3	0.75	-	-	-	-
Upper Carter Pond	5	8	Y	21%	1,2,4,6	1	0.75	-	-	-	-
Upper Spring Creek	5	8	Y	60%	1,2,4,6	3	2.25	-	-	-	-
<b><u>Lewis &amp; Clark County</u></b>											
Bean Lake	16	5	Y	129%	1,2,4,6	21	20.1	-	-	-	-
Bull Pasture	1.5	5	Y	34%	1,2,4,6	0.5	0.05	-	-	-	-
Causeway	1	5	Y	8%	-	0.1	0.92	-	-	-	-
Craig	3	5	Y	4%	1,2,4	0.1	0.05	-	-	-	-
Dearborn	1	5	Y	18%	1,2,4	0.25	0.25	-	-	-	-
Eagle Island	9	5	Y	0%	2	0	-	-	-	-	-
Helena Valley Reservoir	450	5	Y	3%	1,2,6	15	0.15	-	-	-	-
Lake Helena	5	5	Y	4%	1,2,6	0.2	0.02	-	-	-	-
Lichen Cliff	-	5	Y	-	1,2,3,4,5	0.1	-	-	-	-	-
Lone Tree	1	5	Y	8%	1,2,4,6	0.1	0.05	-	-	-	-
Nilan Reservoir	10	5	Y	10%	1,4	1	0.8	-	-	-	-
Prickley Pear	-	5	Y	-	1,2,4,6	0.15	0.05	-	-	-	-
Pullouts	-	5	Y	-	-	-	-	-	-	-	-
Spite Hill	13	5	Y	1%	1,2,4	0.1	0.05	-	-	-	-
Stickney Creek	1	5	Y	10%	1,2,4	0.1	0.02	-	-	-	-
Upper Prickley Pear	37	5	Y	16%	-	6	0.36	-	-	-	-
Willow Creek Reservoir	10	5	Y	10%	1,4	1	0.02	-	-	-	-
York Bridge	10	5	Y	10%	1,2,6	1	0.05	-	-	-	-
Wolf Creek Bridge	-	5	Y	-	1,2,6	0.5	0.25	-	-	-	-

## Region 4 FY24 Noxious Weed Management Report Fishing Access Sites Continued

Site Name	Acres	Co #s	Co. WMP* Y/N	Site Percent Infested	Weed Species	Infested Acres	Chem. Treatment Acres	Mech. Treatment Acres	Insect Releases	Grazing Acres	Reveg. Acres
<b><u>Meagher County</u></b>											
Fort Logan FAS	50	47	Y	24%	1,2,4	12	9	-	-	-	-
Martinsdale Reservoir	194	47	Y	3%	1,2,4	6	6	-	-	-	-
Newlan Creek Reservoir	-	47	Y	-	1,2,4	25	14	-	-	-	-
<b><u>Teton County</u></b>											
Arod Lake	20	31	Y	5%	1,2,4	1	0.25	-	-	-	-
Bynum Reservoir	229	31	Y	1%	1,4,6	2	0.5	-	-	-	-
Eureka Reservoir	40	31	Y	16%	1,2,4,6	6.5	6.5	-	-	-	-
Pishkun Reservoir	50	31	Y	1%	1,4,6	0.05	0.5	-	-	-	-
<b><u>Wheatland County</u></b>											
Martinsdale Reservoir	135	44	Y	4%	1,2,4	6	3	-	-	-	-
<b>FAS Totals</b>	<b>2,231</b>			<b>23%</b>		<b>244</b>	<b>100</b>	<b>0</b>	<b>0</b>	<b>0</b>	<b>0</b>

<b><u>Weed Species Key</u></b>					
1 = Spotted Knapweed	7 = Sulfur Cinquefoil	13 = Ox-eye Daisy	19 = Tansy Ragwort	25 = Yellowflag Iris	31 = Scotch Broom
2 = Leafy Spurge	8 = Diffuse Knapweed	14 = Yellow Toadflax	20 = Meadow Hawkweed	26 = Flowering Rush	32 = Rush Skeletonweed
3 = Dalmation Toadflax	9 = Russian Knapweed	15 = Saltcedar (Tamarisk)	21 = Tall Buttercup	27 = Eurasian Watermilfoil	33 = Yellow Starthistle
4 = Canada Thistle	10 = Whitetop	16 = Hoary Alysum	22 = Perennial Pepperweed	28 = Blueweed	34 = Dyer's Woad
5 = Field Bindweed	11 = St. Johnswort	17 = Curlyleaf Pondweed	23 = Ventenata	29 = Purple Loosestrife	35 = Common Reed (Phragmites)
6 = Houndstongue	12 = Common Tansy	18 = Orange Hawkweed	24 = Common Buckthorn	30 = Knotweed Complex	36 = Medushead
0 = County Listed Weed					
<b>*Co WMP = County Weed Management Plan</b>					

## Region 4 FY24 Noxious Weed Management Report Parks

Site Name	Acres	Co #s	Co. WMP*	Site Percent	Weed	Infested	Chem. Treatment	Mech. Treatment	Insect	Grazing	Reveg.
			Y/N	Infested	Species	Acres	Acres	Acres	Releases	Acres	Acres
<b><u>Cascade County</u></b>											
First Peoples SP	2,180	2	Y	1%	1,2,3,4,5,6,10	25	4.16	-	-	-	-
Giant Springs SP	659	2	Y	4%	1,2,3,4,5,6,10,12,14,16,29	25	4.14	-	-	-	-
Heritage Grnwy. CE	450	2	Y	6%	1,2,3,4,5,6,10,29	25	5	-	-	-	-
Smith River SP	603	2	Y	13%	1,2,3,4,6,12,13,14,16	80	24	2.5	-	-	-
Sluice Boxes SP	1,431	2	Y	5%	1,2,3,4,6,13,14,16	70	-	-	-	-	-
Tower Rock SP	140	2	Y	4%	1,2,3,4,6	5	0.1	-	-	-	-
<b><u>Judith Basin County</u></b>											
Ackley Lake SP	44	36	Y	11%	1,4,5,6,10	5	4.6	-	-	-	-
<b><u>Jefferson County</u></b>											
Elkhorn SP	0.15	51	Y	-	1,4,6,16	0	-	-	-	-	-
<b><u>Lewis &amp; Clark County</u></b>											
Black Sandy SP	43	5	Y	34%	1,2,3,10	15	0.82	-	-	-	-
Spring Meadow SP	61	5	Y	16%	1,2,3,4,5,6,10,16,29	10	3.55	-	-	-	-
<b><u>Meagher County</u></b>											
Smith River SP	342	47	Y	23%	1,2,4,6,16	80	7	-	-	-	-
<b>Parks Totals</b>	<b>5,954</b>			<b>11%</b>		<b>340</b>	<b>53</b>	<b>2.5</b>	<b>0</b>	<b>0</b>	<b>0</b>

<b>Weed Species Key</b>					
1 = Spotted Knapweed	7 = Sulfur Cinquefoil	13 = Ox-eye Daisy	19 = Tansy Ragwort	25 = Yellowflag Iris	31 = Scotch Broom
2 = Leafy Spurge	8 = Diffuse Knapweed	14 = Yellow Toadflax	20 = Meadow Hawkweed	26 = Flowering Rush	32 = Rush Skeletonweed
3 = Dalmation Toadflax	9 = Russian Knapweed	15 = Saltcedar (Tamarisk)	21 = Tall Buttercup	27 = Eurasian Watermilfoil	33 = Yellow Starthistle
4 = Canada Thistle	10 = Whitetop	16 = Hoary Alysum	22 = Perennial Pepperweed	28 = Blueweed	34 = Dyer's Woad
5 = Field Bindweed	11 = St. Johnswort	17 = Curlyleaf Pondweed	23 = Ventenata	29 = Purple Loosestrife	35 = Common Reed (Phragmites)
6 = Houndstongue	12 = Common Tansy	18 = Orange Hawkweed	24 = Common Buckthorn	30 = Knotweed Complex	36 = Medushead
0 = County Listed Weed					
*Co WMP = County Weed Management Plan					

## Region 5 FY24 Noxious Weed Management Report Wildlife Management Areas

Site Name	Acres	Co #s	Co. WMP* Y/N	Site Percent Infested	Weed Species	Infested Acres	Chem. Treatment Acres	Mech. Treatment Acres	Insect Releases	Grazing Acres	Reveg. Acres
<b><u>Big Horn County</u></b>											
Grant Marsh	531	22	Y	9%	1,0	50	2	1	-	-	-
<b><u>Carbon County</u></b>											
Silver Run	638	10	Y	47%	1,2,4,6	300	1	0.2	-	-	-
<b><u>Golden Valley</u></b>											
Big Snowy Mountains	5,670	53	Y	7%	1,4,5,6,10,0	400	7	-	-	640	-
<b><u>Stillwater County</u></b>											
Big Lake	3,248	32	Y	2%	4	75	3.5	1.5	-	-	-
<b><u>Wheatland County</u></b>											
Haymaker	1,325	44	Y	4%	1,2,4,6,10,0	50	2	0.5	-	-	-
<b><u>Yellowstone County</u></b>											
Yellowstone	4,396	3	Y	9%	2,4,6,9,0	412	7	1	-	-	-
<b>WMA Totals</b>	<b>15,809</b>			<b>13%</b>		<b>1,287</b>	<b>22.5</b>	<b>4.2</b>	<b>0</b>	<b>640</b>	<b>0</b>

<b><u>Weed Species Key</u></b>					
1 = Spotted Knapweed	7 = Sulfur Cinquefoil	13 = Ox-eye Daisy	19 = Tansy Ragwort	25 = Yellowflag Iris	31 = Scotch Broom
2 = Leafy Spurge	8 = Diffuse Knapweed	14 = Yellow Toadflax	20 = Meadow Hawkweed	26 = Flowering Rush	32 = Rush Skeletonweed
3 = Dalmation Toadflax	9 = Russian Knapweed	15 = Saltcedar (Tamarisk)	21 = Tall Buttercup	27 = Eurasian Watermilfoil	33 = Yellow Starthistle
4 = Canada Thistle	10 = Whitetop	16 = Hoary Alysum	22 = Perennial Pepperweed	28 = Blueweed	34 = Dyer's Woad
5 = Field Bindweed	11 = St. Johnswort	17 = Curlyleaf Pondweed	23 = Ventenata	29 = Purple Loosestrife	35 = Common Reed (Phragmites)
6 = Houndstongue	12 = Common Tansy	18 = Orange Hawkweed	24 = Common Buckthorn	30 = Knotweed Complex	36 = Medushead
0 = County Listed Weed					
*Co WMP = County Weed Management Plan					

## Region 5 FY24 Noxious Weed Management Report Fishing Access Sites

Site Name	Acres	Co #s	Co. WMP	Site Percent	Weed	Infested	Chem. Treatment	Mech. Treatment	Insect	Grazing	Reveg.
			Y/N	Infested	Species	Acres	Acres	Acres	Releases	Acres	Acres
<b><u>Big Horn County</u></b>											
Arapoish	95	22	Y	21%	1,4,15	20	8.5	8	-	-	-
General Custer	34	22	Y	47%	1,4,5,6,9,15	16	3.15	4	-	-	-
Big Horn	72	22	Y	42%	4,5,6,15	30	10.75	12	-	-	-
Mallard's Landing	43	22	Y	28%	4,5,6,15	12	2	2	-	-	-
Two Leggins	30	22	Y	33%	1,4,5,6,15	10	5	2	-	-	-
Grant Marsh	42	22	Y	34%	1,4,5,6,15	14	9.5	1	-	-	-
<b><u>Carbon County</u></b>											
Beaver Lodge	60	10	Y	8%	1,4,6,0	5	1.33	0.5	-	-	-
Black Diamond	2	10	Y	47%	1,2,4,6	1	-	-	-	-	-
Bridger	3	10	Y	32%	2	1	-	1	-	-	-
Bridger Bend	12	10	Y	50%	1,4,6,0	6	-	-	-	-	-
Bluewater Fish Hatchery	91	10	Y	44%	1,4,6,0	40	-	-	-	-	-
Bull Springs	32	10	Y	50%	1,4,6,0	16	0.66	2	-	-	-
Horsethief Station	84	10	Y	14%	1,2,4,6	12	3	4	-	-	-
Clarks Fork Of the Ys	173	10	Y	7%	4,5,6	12	6	5	-	-	-
Weymiller	5	10	Y	21%	1,4,10	1	-	-	-	-	-
Water Birch	77	10	Y	21%	1,2,4,6	16	1.5	3.5	-	-	-
Wildcat	2	22	Y	13%	1,4,5,15	.028	-	-	-	-	-
<b><u>Stillwater County</u></b>											
Absaroka	1	32	Y	100%	1,6	1	-	0.25	-	-	-
Buffalo Jump	6	32	Y	48%	1,4,5,6	3	0.4	1.5	-	-	-
Castle Rock	80	32	Y	13%	4,6,0	10	5.11	2.5	-	-	-
Cliff Swallow	160	32	Y	6%	1,2,4,5,6,16,0	10	6.7	2	-	-	-
Fireman's Point	162	32	Y	6%	1,2,4,5,6,0	10	2.22	1.5	-	-	-
Homestead Isle	191	32	Y	52%	1,4,6,0	100	-	-	-	-	-
Indian Fort	19	32	Y	53%	1,2,5,6,10,0	10	14	8	-	-	-
Moraine	60	32	Y	17%	1,2,4,5,6,16,0	10	1.5	0.5	-	-	-

## Region 5 FY24 Noxious Weed Management Report Fishing Access Sites Continued

Site Name	Acres	Co #s	Co.	Site	Weed	Infested	Chem. Treatment	Mech. Treatment	Insect	Grazing	Reveg.
			WMP*	Percent							
<b><u>Stillwater County</u></b>											
Rosebud Isle	11	32	Y	82%	1,2,4,5,6,16	9	14	2.5	-	-	-
Swinging Bridge	4	32	Y	98%	2,4,5,6	4	5.6	2	-	-	-
Jeffery's Landing	4	32	Y	13%	1,2,4,6,7	0.5	0.9	1.5	-	-	-
White Bird	23	32	Y	53%	2,4,5,6	12	2.8	2.5	-	-	-
Holmgren Ranch	71	32	Y	42%	1,2,4,5,6,16,0	30	39	3	-	-	-
<b><u>Sweet Grass County</u></b>											
Big Rock	70	40	Y	99%	1,2,4,6,16	69	5.35	2.5	-	55	-
Boulder Forks	72	40	Y	44%	1,2,4,5,6,0	32	0.5	5.5	-	-	-
Bratten	93	40	Y	43%	2,3,4,5,6,0	40	1.5	5	-	-	-
Grey Bear	25	40	Y	99%	1,2,4,6,0	25	0.25	4	-	-	-
Otter Creek	29	40	Y	24%	1,2,4,5,6,9	7	1	12	-	-	-
Pelican	122	40	Y	51%	1,2,3,4,5,6,0	62	4.25	6	-	-	-
<b><u>Wheatland County</u></b>											
Deadman's Basin	101	44	Y	35%	1,4,6	35	9	20	-	-	-
Selkirk	265	44	Y	47%	1,2,4,6	125	6	10	-	-	-
Harlowton	-	44	Y	-	1,2,4	0.5	3	0.5	-	-	-
<b><u>Yellowstone County</u></b>											
Broadview Pond	53	3	Y	9%	0	5	-	2.5	-	-	-
Buffalo Mirage	16	3	Y	122%	1,2,5,12,15,0	20	2.25	-	-	-	-
Captain Clark	148	3	Y	41%	4,5,0	61	0.5	12	-	-	-
Duck Creek Bridge	27	3	Y	9%	1,2,4,5,6,0	2.5	0.15	1.5	-	-	-
East Bridge	1	3	Y	89%	2,5,0	1	0.25	-	-	-	-
Gritty Stone	14	3	Y	43%	1,2,5,0	6	0.6	0.5	-	-	-
Manuel Lisa	38	3	Y	78%	1,5,0	30	0.1	2.5	-	-	-
South Hills	2	3	Y	-	-	0	-	0.25	-	-	-
Bundy Bridge	20	3	Y	15%	2,4,5,0	3	0.75	2	-	-	-
Voyagers Rest	20	3	Y	50%	2,4,0	10	3	2.5	-	-	-
Blue Creek	3	3	Y	17%	2,5,10,0	0.5	-	1.5	-	-	-
<b>FAS Totals</b>	<b>2,769</b>			<b>41%</b>		<b>956</b>	<b>183</b>	<b>164</b>	<b>0</b>	<b>55</b>	<b>0</b>



# Region 5 FY24 Noxious Weed Management Report Parks

Site Name	Acres	Co #s	Co. WMP* Y/N	Site Percent Infested	Weed Species	Infested Acres	Chem. Treatment Acres	Mech. Treatment Acres	Insect Releases	Grazing Acres	Reveg. Acres
<b><u>Big Horn County</u></b>											
Chief Plenty Coups	195	22	Y	26%	1,4,5,6,10,0	50	-	9	-	-	0.15
<b><u>Carbon County</u></b>											
Cooney	309	10	Y	8%	1,3,4,5,6,7,10,16,0	24	26	34	-	-	-
<b><u>Sweet Grass County</u></b>											
Greycliff Prairie Dog Town	98	40	Y	5%	1,2,4,5,6,0	5	2	2	-	-	-
<b><u>Yellowstone County</u></b>											
Lake Elmo	120	3	Y	25%	2,4,5,6,8,10,29,32	30	6	13	-	-	0.5
Pictograph Cave	93	3	Y	2%	4,5,6,0	2	-	4.5	-	-	-
Yellowstone River SP	200	3	Y	5%	1,2,4,6,9,15	10	-	-	-	-	-
<b>Parks Totals</b>	<b>1,015</b>			<b>12%</b>		<b>121</b>	<b>34</b>	<b>62.5</b>	<b>0</b>	<b>0</b>	<b>0.65</b>

<b>Weed Species Key</b>					
1 = Spotted Knapweed	7 = Sulfur Cinquefoil	13 = Ox-eye Daisy	19 = Tansy Ragwort	25 = Yellowflag Iris	31 = Scotch Broom
2 = Leafy Spurge	8 = Diffuse Knapweed	14 = Yellow Toadflax	20 = Meadow Hawkweed	26 = Flowering Rush	32 = Rush Skeletonweed
3 = Dalmation Toadflax	9 = Russian Knapweed	15 = Saltcedar (Tamarisk)	21 = Tall Buttercup	27 = Eurasian Watermilfoil	33 = Yellow Starthistle
4 = Canada Thistle	10 = Whitetop	16 = Hoary Alysum	22 = Perennial Pepperweed	28 = Blueweed	34 = Dyer's Woad
5 = Field Bindweed	11 = St. Johnswort	17 = Curlyleaf Pondweed	23 = Ventenata	29 = Purple Loosestrife	35 = Common Reed (Phragmites)
6 = Houndstongue	12 = Common Tansy	18 = Orange Hawkweed	24 = Common Buckthorn	30 = Knotweed Complex	36 = Medushead
0 = County Listed Weed					
*Co WMP = County Weed Management Plan					

## Region 6 FY24 Noxious Weed Management Report Wildlife Management Area

Site Name	Acres	Co #s	Co. WMP* Y/N	Site Percent Infested	Weed Species	Infested Acres	Chem. Treatment Acres	Mech. Treatment Acres	Insect Releases	Grazing Acres	Reveg. Acres
<b><u>Choteau County</u></b>											
Spring Coulee	1,049	19	Y	13%	-	136	-	-	-	-	-
<b><u>Hill County</u></b>											
Fresno Reservoir	2,677	12	Y	-	-	0	-	-	-	-	-
Lost River	3,632	12	Y	0%	0	2	0.1	-	-	-	-
Fresno Tailwater	125	12	Y	1%	-	1.5	-	-	-	-	-
Rookery	2,277	12	Y	7%	1,2,4,9	160	1	-	-	-	-
<b><u>Phillips County</u></b>											
Cree Crossing	400	11	Y	4%	2,4	16	0.2	-	-	-	-
Dodson Creek	39	11	Y	52%	2,4	20	-	-	-	-	-
Dodson Dam	735	11	Y	9%	1,2,4	65	1.65	-	-	-	-
Sleeping Buffalo	1,310	11	Y	4%	2,4,18	50	14.15	-	-	-	-
<b><u>Richland County</u></b>											
Fox Lake	1,546	27	Y	0%	2,4	3	-	-	-	-	-
<b><u>Valley County</u></b>											
Hinsdale	255	20	Y	4%	2,4,5	11	-	-	-	-	-
Vandalia	310	20	Y	1%	2,4,0	2	-	-	-	-	-
<b>WMA Totals</b>	<b>14,355</b>			<b>8%</b>		<b>467</b>	<b>17</b>	<b>0</b>	<b>0</b>	<b>0</b>	<b>0</b>

Weed Species Key					
1 = Spotted Knapweed	7 = Sulfur Cinquefoil	13 = Ox-eye Daisy	19 = Tansy Ragwort	25 = Yellowflag Iris	31 = Scotch Broom
2 = Leafy Spurge	8 = Diffuse Knapweed	14 = Yellow Toadflax	20 = Meadow Hawkweed	26 = Flowering Rush	32 = Rush Skeletonweed
3 = Dalmation Toadflax	9 = Russian Knapweed	15 = Saltcedar (Tamarisk)	21 = Tall Buttercup	27 = Eurasian Watermilfoil	33 = Yellow Starthistle
4 = Canada Thistle	10 = Whitetop	16 = Hoary Alysum	22 = Perennial Pepperweed	28 = Blueweed	34 = Dyer's Woad
5 = Field Bindweed	11 = St. Johnswort	17 = Curlyleaf Pondweed	23 = Ventenata	29 = Purple Loosestrife	35 = Common Reed (Phragmites)
6 = Houndstongue	12 = Common Tansy	18 = Orange Hawkweed	24 = Common Buckthorn	30 = Knotweed Complex	36 = Medushead
		0 = County Listed Weed			

\*Co WMP = County Weed Management Plan

# Region 6 FY24 Noxious Weed Management Report Fishing Access Sites

Site Name	Acres	Co #s	Co. WMP* Y/N	Site Percent Infested	Weed Species	Infested Acres	Chem. Treatment Acres	Mech. Treatment Acres	Insect Releases	Grazing Acres	Reveg. Acres
<b><u>Blaine County</u></b>											
Faber Reservoir	50	24	Y	8%	4,0	4	0.35	-	-	-	-
<b><u>Daniels County</u></b>											
Whitetail Reservoir	65	37	Y	3%	4	2	2.05	-	-	-	-
<b><u>Garfield County</u></b>											
Rock Creek	5	50	Y	25%	1,4	1.25	0.05	-	-	-	-
<b><u>Hill County</u></b>											
Bear Paw Lake	185	12	Y	6%	1,4	12	0.4	-	-	-	-
Bailey Reservoir	107	12	Y	5%	1,4	5	0.5	-	-	-	-
Fresno Tailwater	35	12	Y	1%	4	0.5	-	-	-	-	-
<b><u>Phillips County</u></b>											
Alakli Creek	2	11	Y	28%	4	0.5	0.1	-	-	-	-
Bjornberg Bridge	21	11	Y	2%	2,4,18	0.5	0.05	-	-	-	-
Cole Ponds	139	11	Y	0%	2,4,18	0.15	0.05	-	-	-	-
<b><u>Richland County</u></b>											
Culbertson Bridge	11	27	Y	9%	2,4	1	0.5	-	-	-	-
Snowdon Bridge	12	27	Y	29%	2,4,18	3.5	1	-	-	-	-
<b><u>Roosevelt County</u></b>											
Lewis and Clark	40	17	Y	-	-	0	0.25	-	-	-	-
<b><u>Valley County</u></b>											
Duck Creek	29	20	Y	2%	4,9,18	0.5	0.4	-	-	-	-
Ft Peck Dredge Cuts	123	20	Y	4%	2,4	5	0.25	-	-	-	-
Glasgow Base Pond	16	20	Y	12%	4	2	0.3	-	-	-	-
School Trust	2	20	Y	-	-	0	0.2	-	-	-	-
<b>FAS Totals</b>	<b>722</b>			<b>8%</b>		<b>38</b>	<b>6.45</b>	<b>0</b>	<b>0</b>	<b>0</b>	<b>0</b>

<b>Weed Species Key</b>					
1 = Spotted Knapweed	7 = Sulfur Cinquefoil	13 = Ox-eye Daisy	19 = Tansy Ragwort	25 = Yellowflag Iris	31 = Scotch Broom
2 = Leafy Spurge	8 = Diffuse Knapweed	14 = Yellow Toadflax	20 = Meadow Hawkweed	26 = Flowering Rush	32 = Rush Skeletonweed
3 = Dalmation Toadflax	9 = Russian Knapweed	15 = Saltcedar (Tamarisk)	21 = Tall Buttercup	27 = Eurasian Watermilfoil	33 = Yellow Starthistle
4 = Canada Thistle	10 = Whitetop	16 = Hoary Alysum	22 = Perennial Pepperweed	28 = Blueweed	34 = Dyer's Woad
5 = Field Bindweed	11 = St. Johnswort	17 = Curlyleaf Pondweed	23 = Ventenata	29 = Purple Loosestrife	35 = Common Reed (Phragmites)
6 = Houndstongue	12 = Common Tansy	18 = Orange Hawkweed	24 = Common Buckthorn	30 = Knotweed Complex	36 = Medushead
0 = County Listed Weed					
<b>*Co WMP = County Weed Management Plan</b>					

## Region 6 FY24 Noxious Weed Management Report Parks

Site Name	Acres	Co #s	Co. WMP*	Site Percent	Weed	Infested	Chem. Treatment	Mech. Treatment	Insect	Grazing	Reveg.
			Y/N	Infested	Species	Acres	Acres	Acres	Releases	Acres	Acres
<b>Sheridan County</b>											
Brush Lake	450	34	Y	1%	2,4,5	3	-	-	-	-	-
<b>Parks Totals</b>	<b>450</b>			<b>1%</b>		<b>3</b>	<b>0</b>	<b>0</b>	<b>0</b>	<b>0</b>	<b>0</b>

## Region 6 FY24 Noxious Weed Management Report Administrative Sites and Affiliated Lands

Site Name	Acres	Co #s	Co. WMP*	Site Percent	Weed	Infested	Chem. Treatment	Mech. Treatment	Insect	Grazing	Reveg.
			Y/N	Infested	Species	Acres	Acres	Acres	Releases	Acres	Acres
<b>Hill County</b>											
Havre Area Office	-	12	Y	-	0	0.2	0.3	-	-	-	-
<b>Valley County</b>											
Fort Peck Hatchery	100	20	Y	36%	1,2,5,12,18	36	-	-	-	-	-
Fort Peck Office	0.1	20	Y	-	-	0	-	-	-	-	-
Glasgow Reg Hqtrs	3	20	Y	4%	4,18	0.1	0.2	-	-	-	-
<b>FAS Totals</b>	<b>103</b>			<b>13%</b>		<b>36</b>	<b>0.5</b>	<b>0</b>	<b>0</b>	<b>0</b>	<b>0</b>

<u>Weed Species Key</u>					
1 = Spotted Knapweed	7 = Sulfur Cinquefoil	13 = Ox-eye Daisy	19 = Tansy Ragwort	25 = Yellowflag Iris	31 = Scotch Broom
2 = Leafy Spurge	8 = Diffuse Knapweed	14 = Yellow Toadflax	20 = Meadow Hawkweed	26 = Flowering Rush	32 = Rush Skeletonweed
3 = Dalmation Toadflax	9 = Russian Knapweed	15 = Saltcedar (Tamarisk)	21 = Tall Buttercup	27 = Eurasian Watermilfoil	33 = Yellow Starthistle
4 = Canada Thistle	10 = Whitetop	16 = Hoary Alysum	22 = Perennial Pepperweed	28 = Blueweed	34 = Dyer's Woad
5 = Field Bindweed	11 = St. Johnswort	17 = Curlyleaf Pondweed	23 = Ventenata	29 = Purple Loosestrife	35 = Common Reed (Phragmites)
6 = Houndstongue	12 = Common Tansy	18 = Orange Hawkweed	24 = Common Buckthorn	30 = Knotweed Complex	36 = Medushead

\*Co WMP = County Weed Management Plan

## Region 7 FY24 Noxious Weed Management Report Wildlife Management Areas

Site Name	Acres	Co #s	Co. WMP* Y/N	Site Percent Infested	Weed Species	Infested Acres	Chem. Treatment Acres	Mech. Treatment Acres	Insect Releases	Grazing Acres	Reveg. Acres
<b><u>Dawson County</u></b>											
Three Mile	37	16	Y	19%	1,2,4	7	-	-	-	-	-
War Dance Island	12	16	Y	59%	2,13	7	-	-	-	-	-
<b><u>Prairie County</u></b>											
Badlands	2	45	Y	24%	15	1	-	-	-	-	-
<b><u>Richland County</u></b>											
Elk Island	1,298	27	Y	6%	2,4,6,15	74	14.5	2	-	-	-
F Island	121	27	Y	43%	2,4,15	52	-	-	-	-	-
Seven Sisters	1,539	27	Y	2%	2,4,6,15	28	9	2	-	-	13
<b><u>Rosebud County</u></b>											
Howard Valley	0.2	29	Y	-	15	0	-	-	-	-	-
<b><u>Treasure County</u></b>											
Amelia Island	195	33	Y	4%	1,4,6,15	8	3	-	-	-	18
Isaac Homestead	1,169	33	Y	12%	1,4,5,6,15,24	136	3	-	-	-	45
Sanders	0.3	33	Y	-	4,15	0	-	-	-	-	-
<b>WMA Totals</b>	<b>4,372</b>			<b>19%</b>		<b>313</b>	<b>29.5</b>	<b>4</b>	<b>0</b>	<b>0</b>	<b>75</b>

<u>Weed Species Key</u>					
1 = Spotted Knapweed	7 = Sulfur Cinquefoil	13 = Ox-eye Daisy	19 = Tansy Ragwort	25 = Yellowflag Iris	31 = Scotch Broom
2 = Leafy Spurge	8 = Diffuse Knapweed	14 = Yellow Toadflax	20 = Meadow Hawkweed	26 = Flowering Rush	32 = Rush Skeletonweed
3 = Dalmation Toadflax	9 = Russian Knapweed	15 = Saltcedar (Tamarisk)	21 = Tall Buttercup	27 = Eurasian Watermilfoil	33 = Yellow Starthistle
4 = Canada Thistle	10 = Whitetop	16 = Hoary Alysum	22 = Perennial Pepperweed	28 = Blueweed	34 = Dyer's Woad
5 = Field Bindweed	11 = St. Johnswort	17 = Curlyleaf Pondweed	23 = Ventenata	29 = Purple Loosestrife	35 = Common Reed (Phragmites)
6 = Houndstongue	12 = Common Tansy	18 = Orange Hawkweed	24 = Common Buckthorn	30 = Knotweed Complex	36 = Medushead
0 = County Listed Weed					
<b>*Co WMP = County Weed Management Plan</b>					

## Region 7 FY24 Noxious Weed Management Report Fishing Access Sites

Site Name	Acres	Co #s	Co.	Site	Weed	Infested	Chem.	Mech. Treatment	Insect	Grazing	Reveg.
			WMP*	Percent							
			Y/N		Species	Acres	Acres	Acres		Acres	Acres
<b><u>Custer County</u></b>											
Kinsey Bridge	28	14	Y	7%	1,2,4,5,6	2	2	-	-	-	-
Bonfield	56	14	Y	4%	1,4,5,15	2	5.3	0.13	-	-	-
Roche Juane	1	14	Y	50%	5	0.5	1	-	-	-	-
Twelve Mile Dam	27	14	Y	4%	1,4,5	1	-	-	-	-	-
<b><u>Dawson County</u></b>											
Intake Dam	53	16	Y	6%	2,4	3	1	-	-	-	-
Johnson Reservoir	60	16	Y	5%	4,5	3	1	-	-	-	-
Black Bridge	81	16	Y	19%	1,2,4,5	15	-	-	-	-	-
Stipek	113	16	Y	9%	1,2,4,6	10	1	-	-	-	-
<b><u>Fallon County</u></b>											
South Sandstone	599	39	Y	2%	4,5	10	7	-	-	-	-
<b><u>Powder River County</u></b>											
Broadus Bridge	3	9	Y	9%	2	0.3	-	-	-	-	-
<b><u>Prairie County</u></b>											
Fallon Bridge	8	45	Y	6%	2,6	0.5	-	-	-	-	-
<b><u>Richland County</u></b>											
Diamond Willow	80	27	Y	19%	2,4,6	15	1	-	-	-	-
Elk Island FAS	82	27	Y	12%	1,2,4,6	10	-	-	-	-	-
Seven Sisters FAS	2	27	Y	3%	1,2,4,6,0	0.05	-	-	-	-	-
Gartside	160	27	Y	5%	4,6	8	2	-	-	-	-
Sidney Bridge	2	27	Y	21%	2,4,0	0.5	-	-	-	-	-
<b><u>Rosebud County</u></b>											
Far West	33	29	Y	15%	2,4,6,15	5	1	0.13	-	-	-
Rosebud (East Unit)	29	29	Y	10%	4,6	3	-	-	-	-	-
Rosebud (West Unit)	10	29	Y	10%	4,6,0	1	1	-	-	-	-
<b><u>Treasure County</u></b>											
Amelia Island FAS	7	33	Y	15%	2,6	1	1	-	-	-	-
Myers Bridge	15	33	Y	20%	4,6,15	3	1	-	-	-	-
<b>FAS Totals</b>	<b>1,448</b>			<b>12%</b>		<b>94</b>	<b>23</b>	<b>0.26</b>	<b>0</b>	<b>0</b>	<b>0</b>

## Region 7 FY24 Noxious Weed Management Report Parks

Site Name	Acres	Co #s	Co.	Site	Weed Species	Infested Acres	Chem. Treatment Acres	Mech. Treatment Acres	Insect Releases	Grazing Acres	Reveg. Acres
			WMP*	Percent							
<b><u>Big Horn County</u></b>											
Rosebud Battlefield	3,052	22	Y	2%	3,4,5,6	50	36.75	-	-	-	-
Tongue R. Reservoir	685	22	Y	1%	1,4,5,15	5	3.75	-	-	-	-
<b><u>Carter County</u></b>											
Medicine Rocks	330	42	Y	1%	1,4	2	-	-	-	-	-
<b><u>Custer County</u></b>											
Pirogue Island	210	14	Y	9%	4,15	18	4.13	-	-	-	-
<b><u>Dawson County</u></b>											
Glendive Rifle Range	357	16	Y	0%	2,4	1	-	-	-	-	-
Makoshika	11,603	16	Y	3%	1,2,4,0	300	-	-	-	-	-
<b>Parks Totals</b>	<b>16,238</b>			<b>2%</b>		<b>376</b>	<b>45</b>	<b>0</b>	<b>0</b>	<b>0</b>	<b>0</b>

## Region 7 FY24 Noxious Weed Management Report Administrative Sites and Affiliated Lands

Site Name	Acres	Co #s	Co.	Site	Weed Species	Infested Acres	Chem. Treatment Acres	Mech. Treatment Acres	Insect Releases	Grazing Acres	Reveg. Acres
			WMP*	Percent							
<b><u>Custer County</u></b>											
HQ Complex	8	14	Y	1%	1,4,5,0	0.05	4.75	-	-	-	-
<b>Other Site Totals</b>	<b>8</b>			<b>1%</b>		<b>0.05</b>	<b>4.75</b>	<b>0</b>	<b>0</b>	<b>0</b>	<b>0</b>

<b><u>Weed Species Key</u></b>				
1 = Spotted Knapweed	7 = Sulfur Cinquefoil	13 = Ox-eye Daisy	19 = Tansy Ragwort	25 = Yellowflag Iris
2 = Leafy Spurge	8 = Diffuse Knapweed	14 = Yellow Toadflax	20 = Meadow Hawkweed	26 = Flowering Rush
3 = Dalmation Toadflax	9 = Russian Knapweed	15 = Saltcedar (Tamarisk)	21 = Tall Buttercup	27 = Eurasian Watermilfoil
4 = Canada Thistle	10 = Whitetop	16 = Hoary Alysum	22 = Perennial Pepperweed	28 = Blueweed
5 = Field Bindweed	11 = St. Johnswort	17 = Curlyleaf Pondweed	23 = Ventenata	29 = Purple Loosestrife
6 = Houndstongue	12 = Common Tansy	18 = Orange Hawkweed	24 = Common Buckthorn	30 = Knotweed Complex
		0 = County Listed Weed		31 = Scotch Broom
				32 = Rush Skeletonweed
				33 = Yellow Starthistle
				34 = Dyer's Woad
				35 = Common Reed (Phragmites)
				36 = Medushead

**\*Co WMP = County Weed Management Plan**

(page intentionally left blank)