



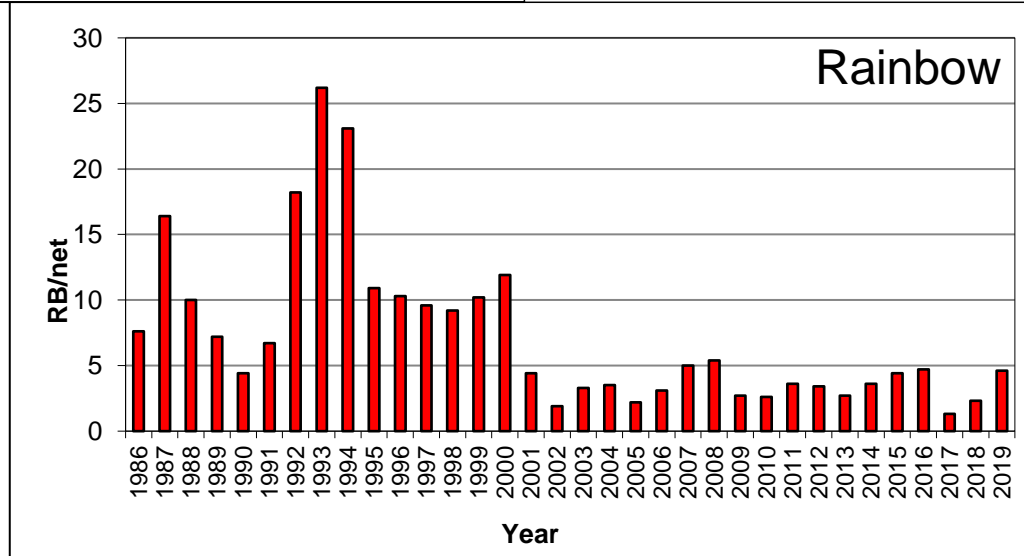
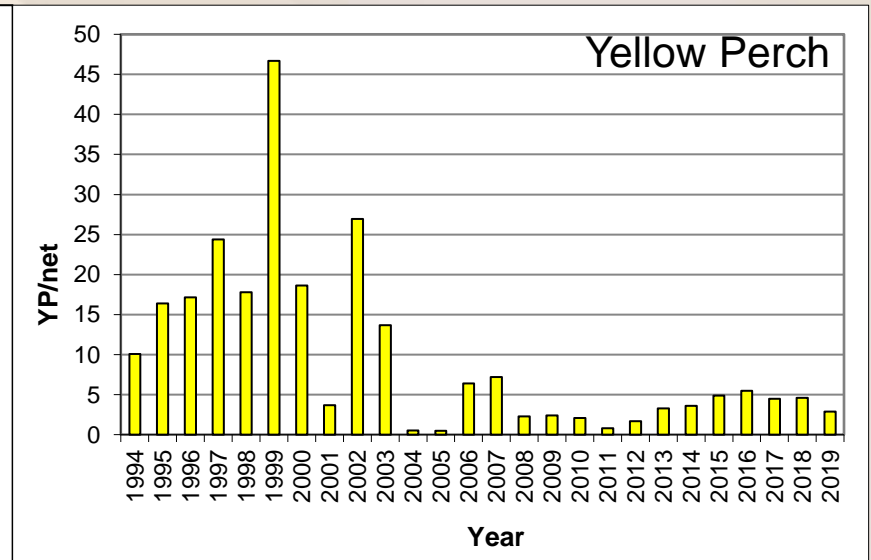
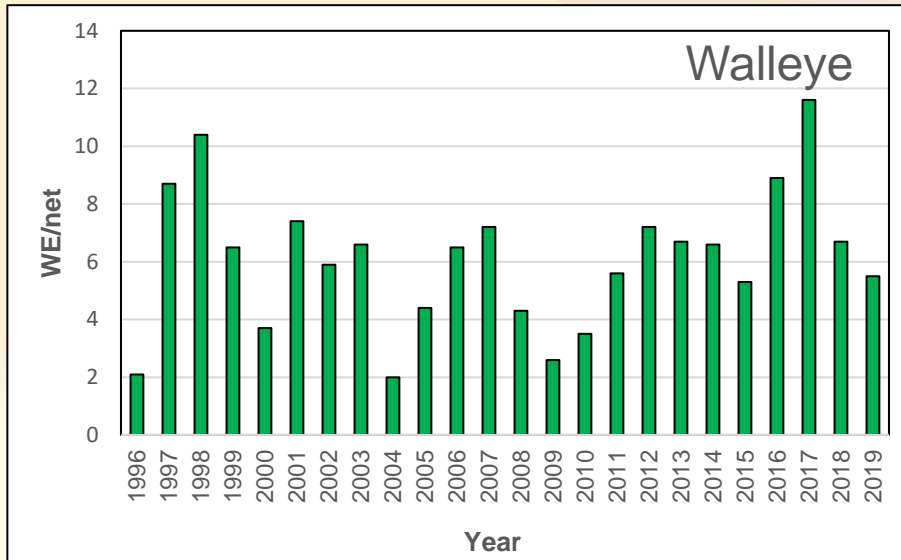
Paul and Marilyn Peck

2019 Canyon Ferry Reservoir Fisheries Trends

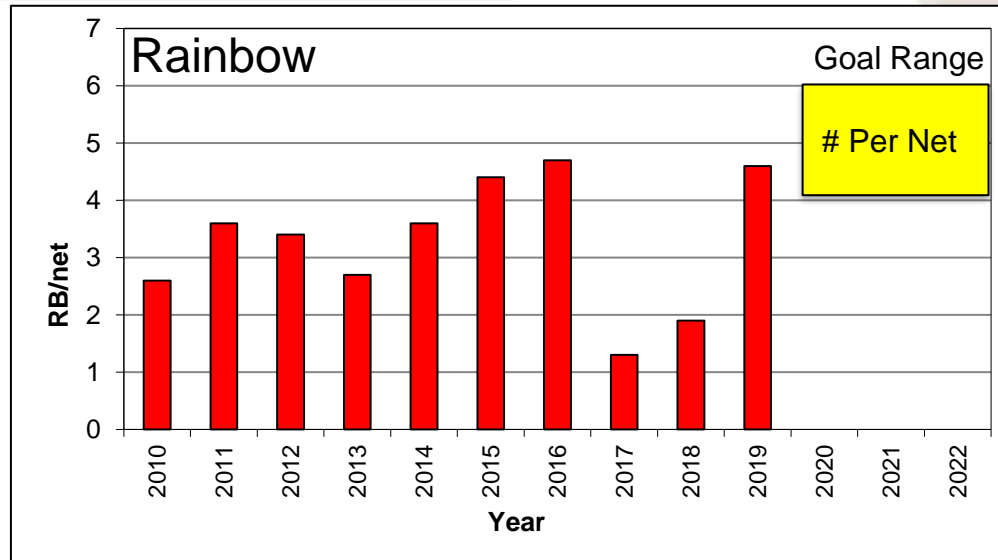
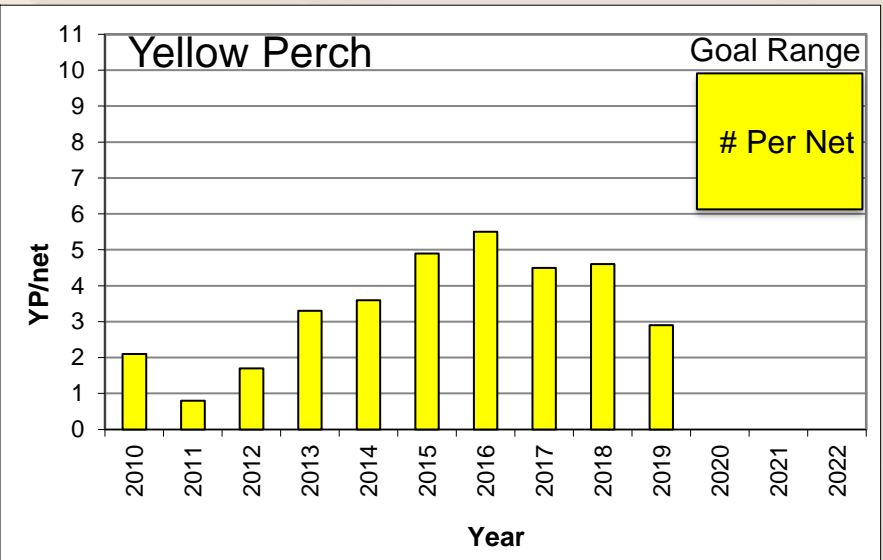
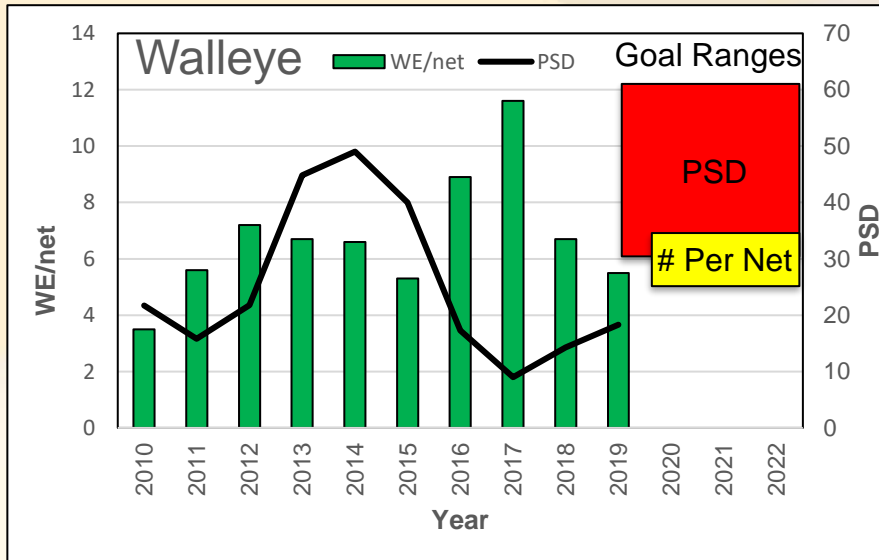
Troy Humphrey
Helena Area Senior Fisheries Technician
(406) 495-3266
thumphrey@mt.gov



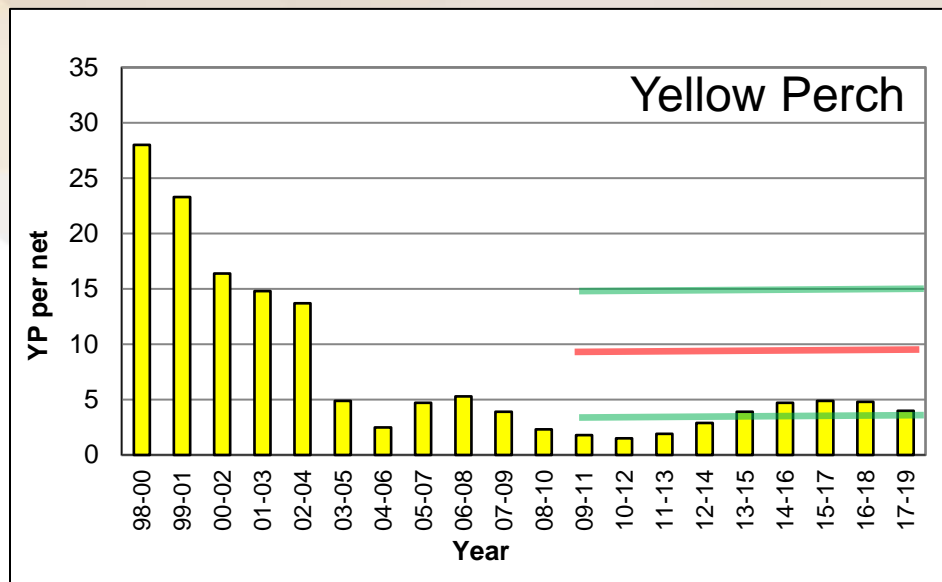
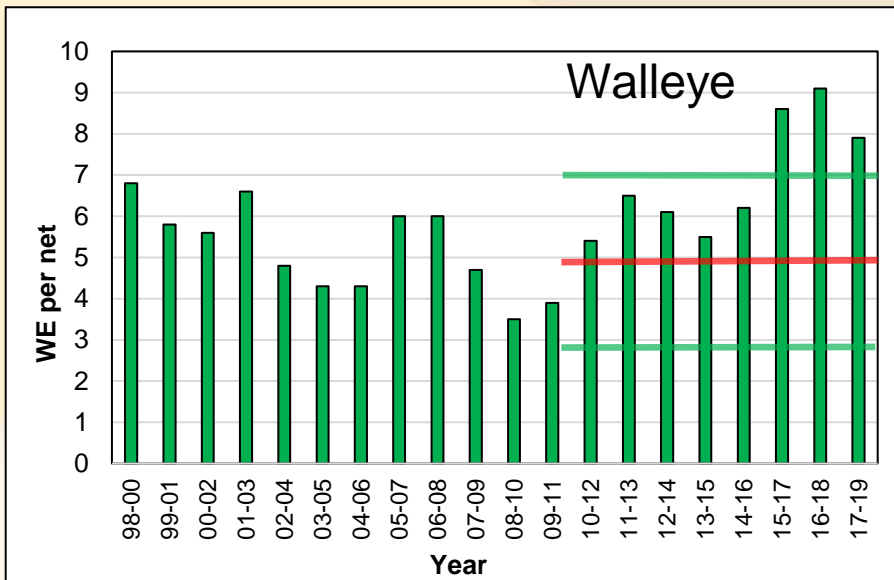
2019 Relative Abundance Gillnetting Surveys



2019 Relative Abundance Gillnetting Surveys

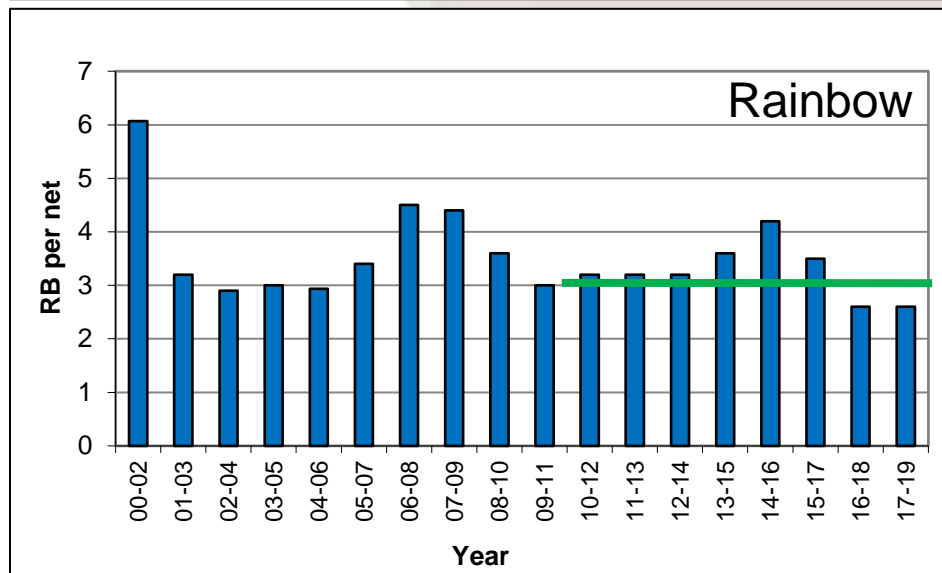


2019 Relative Abundance Gillnetting Surveys – 3 Year Average Trends

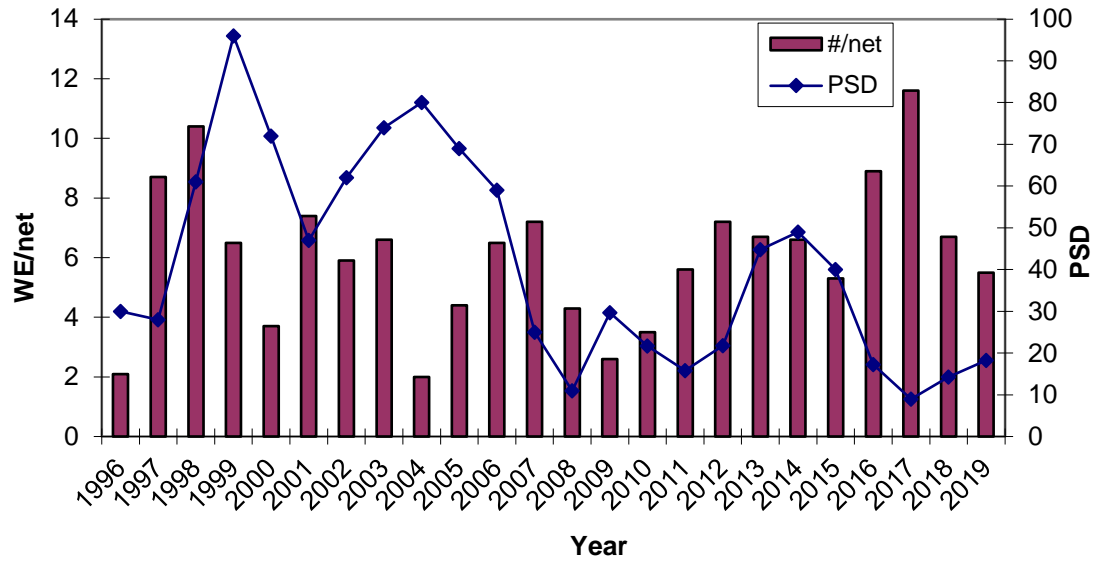


Canyon Ferry			
	Target Range	Goal	2019
Walleye	3-6.9/net	5/net	7.9
Yellow Perch	3-14.9/net	10/net	4.0
Rainbow Trout	>3/net	5-6/net	2.6

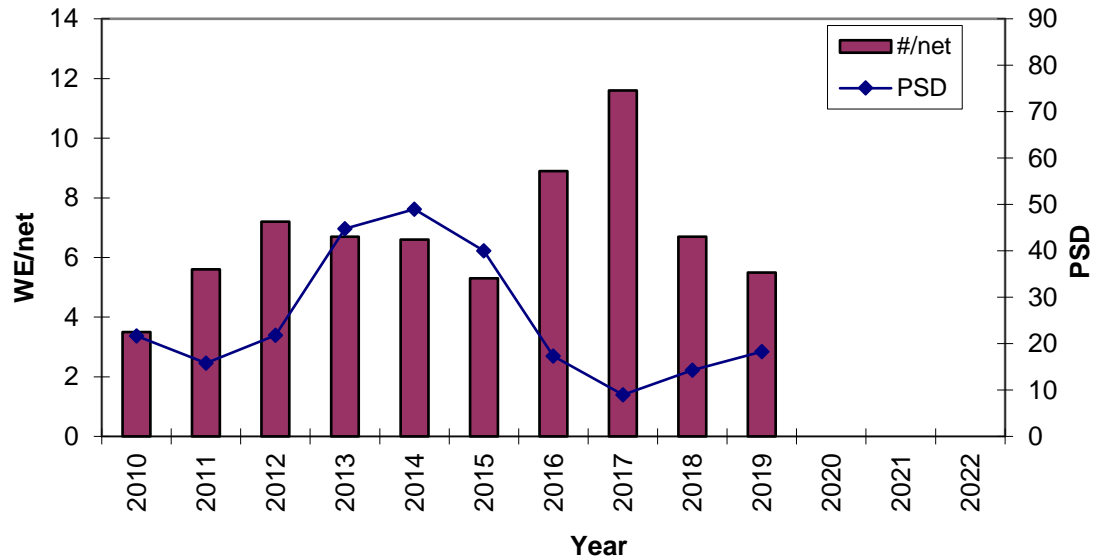
= meets management goals
 = below management goals, within management range
 = exceeds upper or lower management triggers



Relative Abundance and PSD

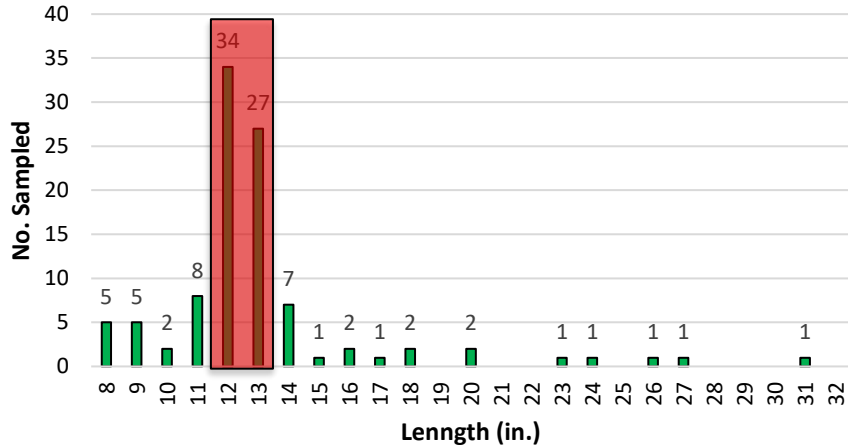


Relative Abundance and PSD

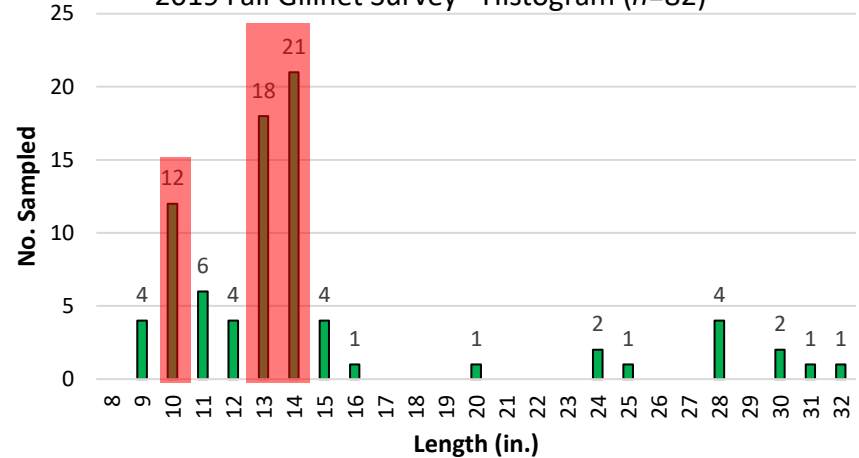


Canyon Ferry Reservoir Walleye

Canyon Ferry Reservoir - Walleye
2018 Fall Gillnet Survey - Histogram (n=101)

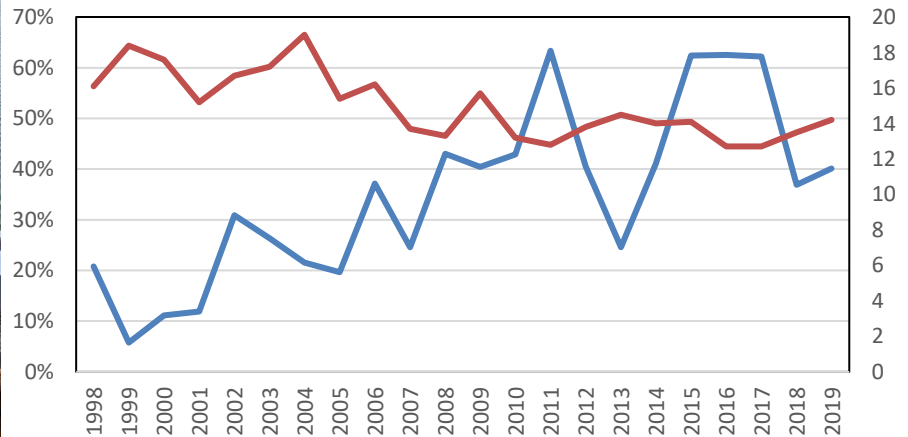


Canyon Ferry Reservoir - Walleye
2019 Fall Gillnet Survey - Histogram (n=82)

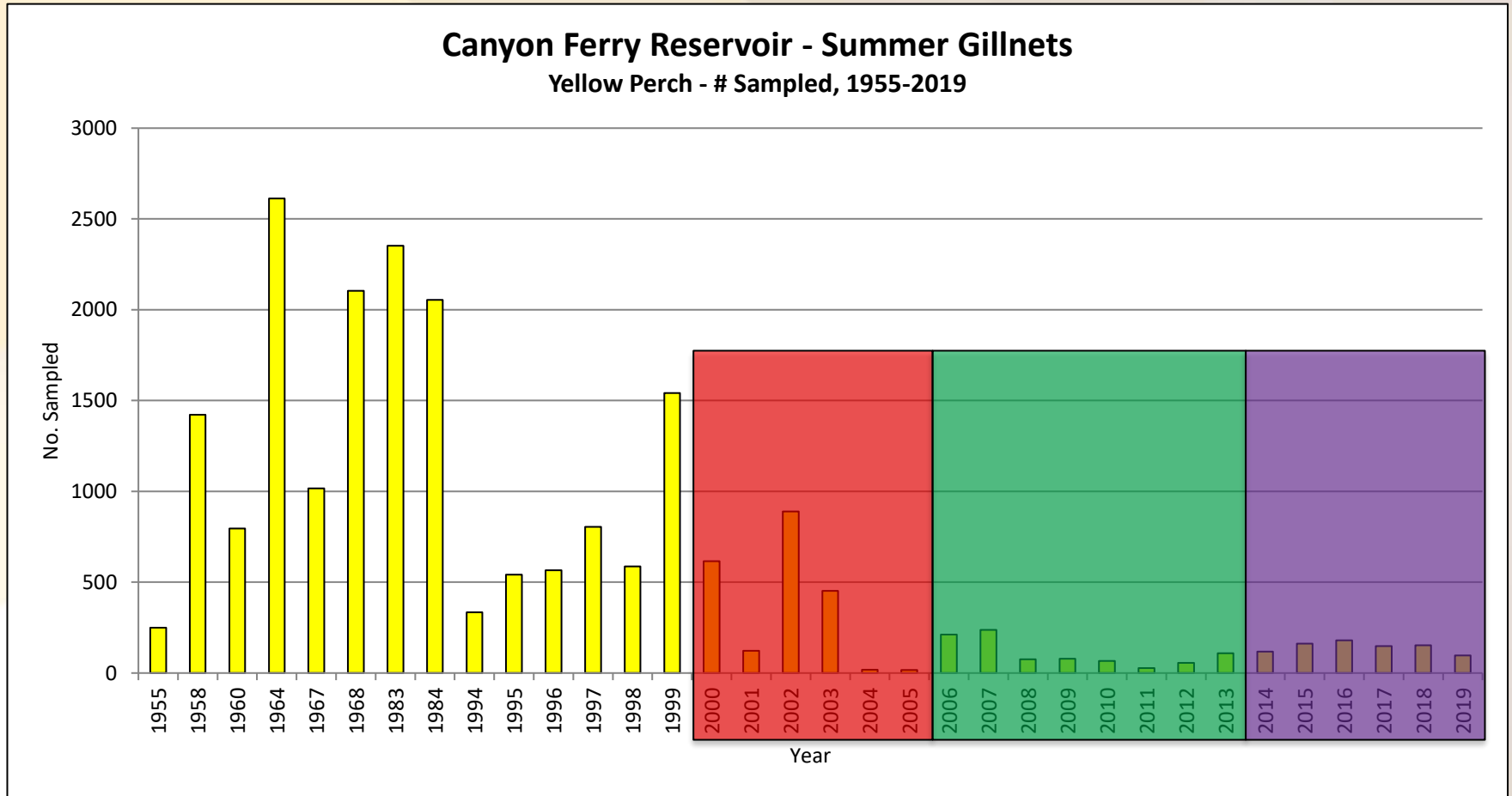


Canyon Ferry Reservoir - Walleye

*% Released by Anglers (Creel) & Average Length
(Fall Nets) *Anglers Targeting WE



Canyon Ferry Reservoir Yellow Perch



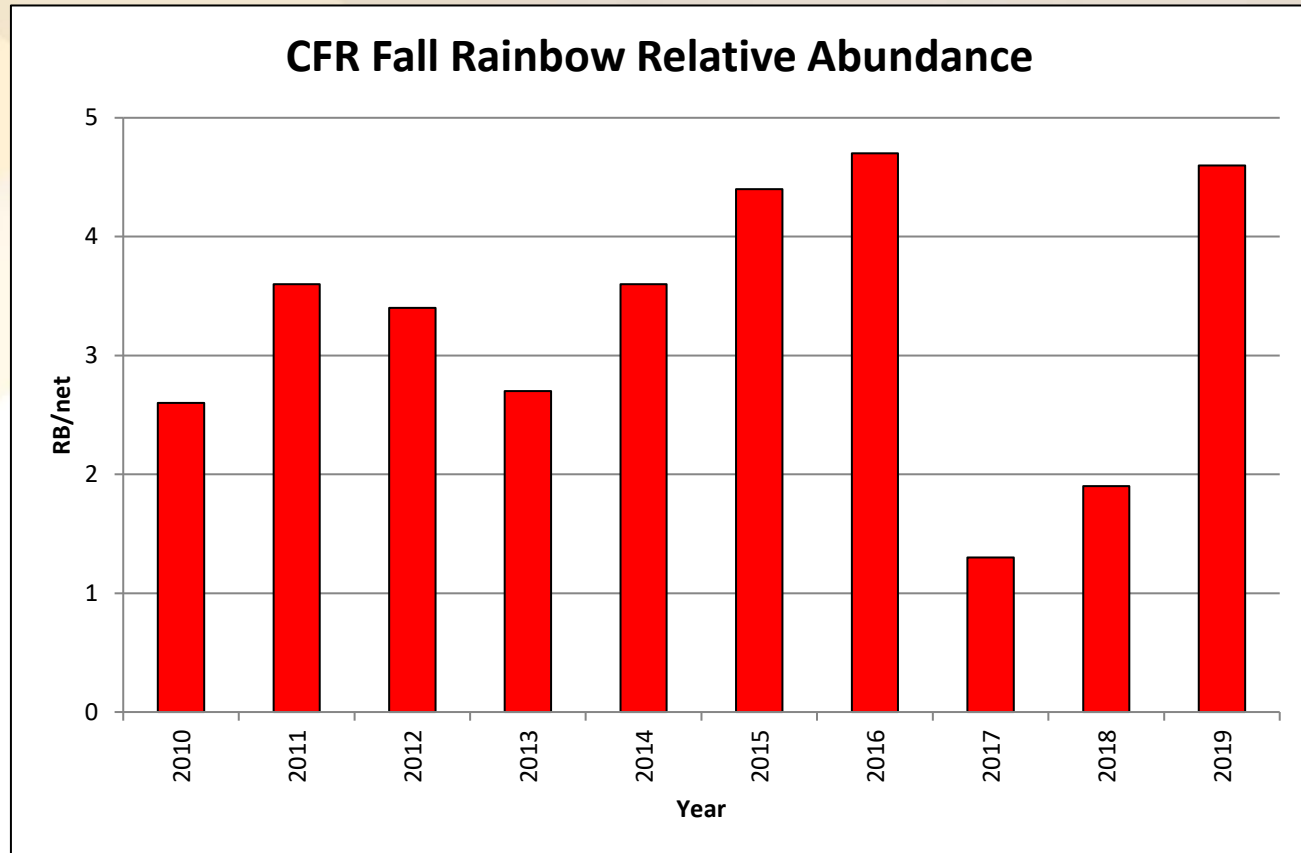
50 daily and no possession

15 daily and in possession

10 daily and in possession



Canyon Ferry Reservoir Rainbow Trout



Rainbow trout hatchery plants = 282,000 in 2017, 156,000 in 2018 and 134,000 in 2019 (Holter = 130,000)



2019 Highlights:

-AIS restrictions were lifted for 2020

-Walleye densities decreased to 5.5 per net after an all-time high of 11.6 in 2017

-Walleye average length in nets increased to 14.2 inches, which helped PSD's increase to 18.3 (still low)

-Walleye catch rates were 0.34 (general angler) and 0.50 (walleye target angler). Percent kept remained around 60%

-3-inch nets were discontinued in 2019

-Yellow perch densities decreased to 2.9 per net

-Rainbow trout densities increased to 4.6 per net

