

# Sweathouse Creek Conservation Easement

MONTANA FWP

Proposed conservation easement and public access project in the Bitterroot Valley of western Montana

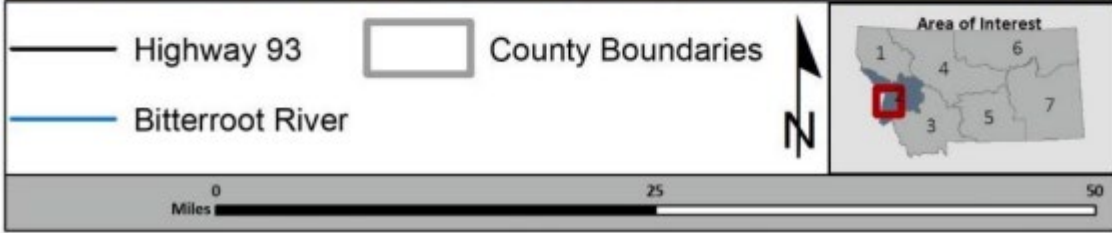


Figure 1. Location of the proposed Sweathouse Creek Conservation Easement, Ravalli County.

# Sweathouse Creek Conservation Easement

MONTANA FWP

Proposed conservation easement and public access project in the Bitterroot Valley of western Montana

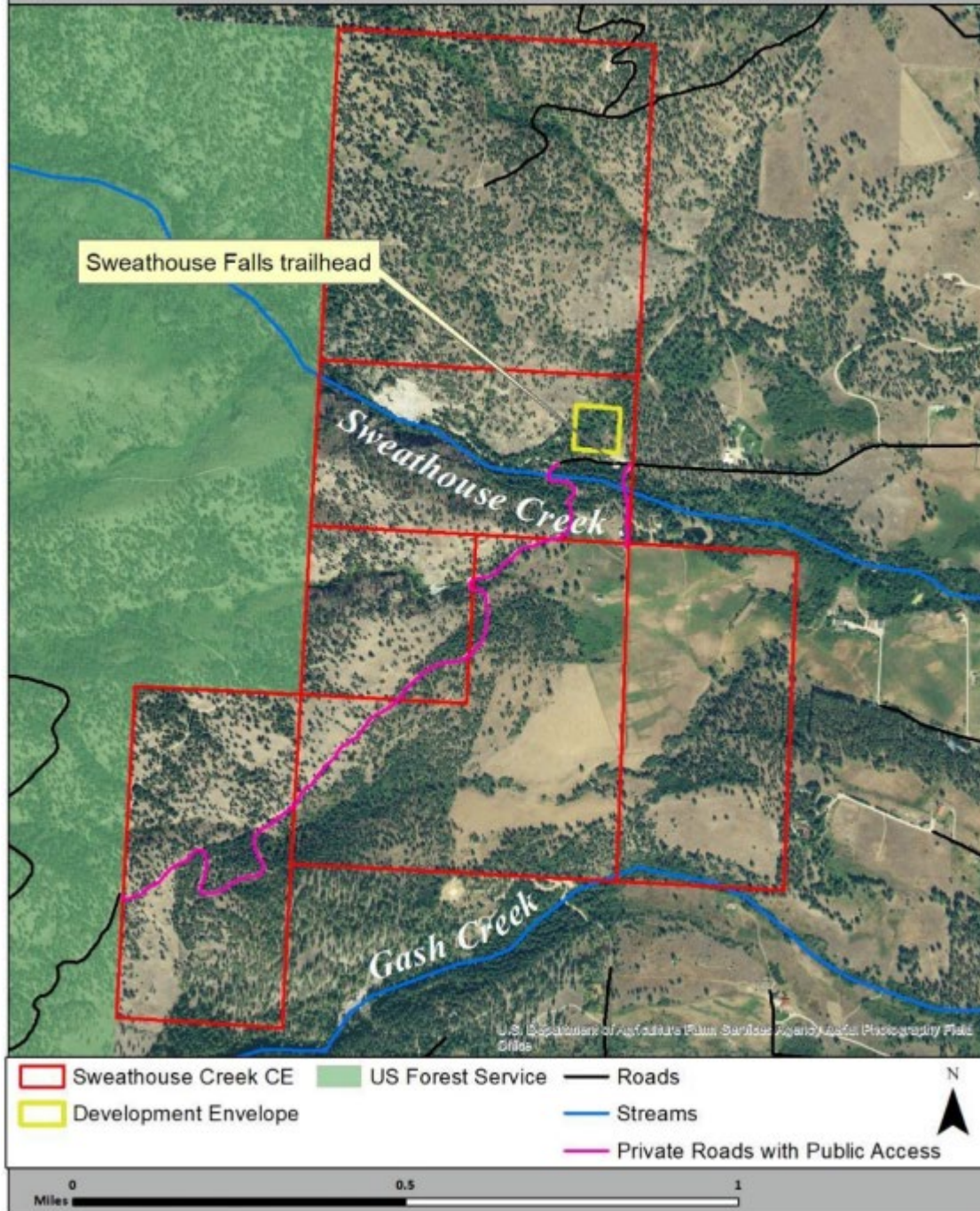


Figure 2. Detailed overview of the proposed Sweathouse Creek Conservation Easement, totaling ~ 540 acres.