

FINAL ENVIRONMENTAL ASSESSMENT

SAGE-GROUSE TRANSLOCATION

[Montana to Alberta]

December 31, 2015

A final Environmental Assessment (EA) describing the proposed translocation of up to 120 sage-grouse from northeast Montana Region 6 to southeast Alberta, over a five year period (2016 - 2020) with the primary intention of augmenting sage-grouse populations in silver sagebrush habitat.

Table of Contents

PREFACE	4
Chapter 1.0: Purpose of and Need for Action	6
1.1 Proposed Action	6
1.2 Need for the Action.....	6
1.3 Objectives of the Action (desired outcomes and conditions)	8
1.4 Relevant Plans, EISs, EAs, Regulations, and Authorities	9
1.5 Decision That Must Be Made	10
1.6 Applicable Permits, Licenses, and Other Consultation Requirements	10
Chapter 2.0: Alternatives Including the Proposed Action	10
2.1 Introduction	10
2.2 Process Used to Develop the Alternatives	11
2.2.1 History and Development Process of Alternatives	11
2.2.2 Alternatives Eliminated from Detailed Study	15
2.3 Description of Alternatives	15
2.3.1 Alternative A: The No Action Alternative	15
2.3.2 Alternative B: The Southern Valley and Phillips Counties Sage-grouse Translocation Alternative	16
Chapter 3.0: Affected Environment & Predicted Environmental Consequences	23
3.1 Introduction	23
3.2 Description of Relevant Pre-Existing Factors	23
3.2.1 Pre-existing factors in Montana’s South Valley/Phillips core sage-grouse area	23
3.2.2 Pre-existing factor in southeast Alberta’s sage-grouse habitat.....	25
3.3 Relevant Resource #1- Sage-grouse population effects in South Valley\ Phillips core area....	27
3.3.1 Effects of Alternative A: No translocation (No Action)	27
3.3.2 Effects of Alternative B: The Southern Valley and Phillips Counties Sage-grouse Translocation Alternative	27
3.4 Relevant Resource #2 - Sage-grouse population effects in silver sagebrush habitat north of the Milk River in Montana and Alberta	28
3.4.1 Effects of Alternative A: No translocation (No Action)	28
3.4.2 Effects of Alternative B: The Southern Valley and Phillips Counties Sage-grouse Translocation Alternative (Proposed Action)	28
3.5 Relevant Resource #3 - How habitat constraints in Alberta are being addressed to improve their suitability for sage-grouse habitat.....	29
3.5.1 Effects of Alternative A: No translocation (No Action)	32
3.5.2 Effects of Alternative B: The Southern Valley and Phillips Counties Sage-grouse Translocation Alternative (Proposed Action)	33
3.6 Relevant Resource #4 – Sage-grouse Monitoring and Research effects.....	33
3.6.1 3.6.1 Effects of Alternative A: No translocation (No Action)	33
3.6.2 Effects of Alternative B: The Southern Valley and Phillips Counties Sage-grouse Translocation Alternative (Proposed Action)	33
3.7 Cumulative Impacts	34
Chapter 4.0: Resource issues considered but eliminated from detailed analysis	34
4.1 Vegetation and soils.....	34
4.2 Recreational Resources.....	34
Chapter 5.0: Determination If an Environmental Impact Statement is Required	35
Chapter 6.0: Public Participation and Collaborators	35
6.1 Public Involvement.....	35
6.2 Collaborators and scoping	35
6.3 Anticipated Timeline	36
Chapter 7.0: EA Preparer(s).....	37
LITERATURE CITED	37

List of Figures

Figure 1. Trend of strutting male attendance at Alberta sage-grouse leks 1968-2015	7
Figure 2. Distribution of leks in the Northern Sagebrush Steppe.	8
Figure 3. Sage-grouse population strong-holds in Montana considered in the alternatives.	11
Figure 4. Genetic distance using a neighbor-joining tree where longer lines represent greater genetic distance.	13
Figure 5. Distribution of sage-grouse populations based on colored cluster points.	14
Figure 6. Sage-grouse lek complexes in south Valley and Phillips Counties, MT.	16
Figure 7. Annual life cycle of sage-grouse.	18
Figure 8. Sage-grouse male counts on the Valley County block	24
Figure 9. Sage-grouse male counts on 21 AHM leks in South Valley/Phillips County.	24
Figure 10. South Valley/Phillips County sage-grouse core area.	25
Figure 11. Historic and current distribution of sage-grouse in Alberta and neighboring Saskatchewan.	26
Figure 12. Sage grouse trend data for AHM, South Valley and South Phillips county leks and 2011/2012 capture leks 2002-2015.	28

List of Tables

Table 1. Comparison of desirable attributes between possible source populations as defined by Connelly <i>et al.</i> , (2004). Key responses that negate the source population are highlighted.	12
Table 2. An example of research categories and associated topics that could be addressed during and after the augmentation effort.	20

Appendices

Appendix 1. Table summarizing past, current, and projected threats to sage-grouse in Alberta.	42
Appendix 2. Map of sage-grouse leks in Alberta to focus augmentation efforts	43
Appendix 3. Capture and handling protocols	44
Appendix 4. Disease and parasite concerns and testing	46
Appendix 5. State, provincial and federal regulatory requirements for translocating sage-grouse	50
Appendix 6. Sage-grouse population trend for proposed source leks used in future translocations.	51

Decision Notice

Sage Grouse Translocation from Montana to Alberta Environmental Assessment Decision Notice.	52
--	----

PREFACE

Greater Sage-grouse (*herein* sage-grouse) are a species of concern across much of their range, especially peripheral populations. Sage-grouse across Canada have declined 66 to 92% in abundance from 1970 population levels (Aldridge and Brigham 2003), with no sign of recovery in recent years. Alberta agreed with these estimates placing their sage-grouse declines at 80% over the same time period (Connelly *et al.* 2004). Historic sage-grouse declines are primarily attributed to habitat alteration and degradation (Schroeder *et al.* 2004). Other pressures, such as anthropogenic development, have been a considerable threat to sage-grouse in the recent decades. However, most anthropogenic development is believed to have peaked and a rapid reduction of industrial footprint has already begun. Currently, subpopulations in both Alberta and Saskatchewan may have been reduced to below minimum viable size (Environment Canada 2014).

Currently, Montana considers sage-grouse as both a Species of Concern and an upland game bird having stable populations. Undoubtedly, high densities of sage-grouse across Montana have provided a valid reason precluding listing under the Endangered Species Act, including the presence of at least two of North America's population strongholds (Connelly *et al.* 2004). One of these includes a high-density subpopulation between the Missouri River and the Milk River in Northern Montana.

The critical status of the silver sagebrush-associated sage-grouse populations warrants special attention by governments in the transboundary region of Alberta, Saskatchewan and Montana (Northern Sagebrush Steppe). All options available for recovery of the species are being considered. In particular, Alberta is seeking immediate efforts to ensure stochastic events and lag effects from past development (Holloran 2005) do not cause extirpation of sub-populations in the near term. In the longer term, population recovery will require a suite of actions and evaluations to determine success.

Alberta Environment and Parks (AEP), a ministry within the provincial government, has approached Montana Fish, Wildlife and Parks (MFWP) with a proposal to translocate up to 40 sage-grouse in year 1 from North Central Montana Region 6 to Southeast Alberta for the purpose of population augmentation. The proposal further requests to translocate 40 sage-grouse biennially for the subsequent 4 years, resulting in translocation of 40 sage-grouse in each of 2016, 2018 and 2020.

This EA outlines key background information procedures and effects of translocating up to 40 sage-grouse biennially (totaling up to 120 sage-grouse) from Montana to Alberta over the 5 year term. Based on minimum sage-grouse population estimates in Northern Montana, the proposed translocation would remove 0.40% (0.0040) of the sage-grouse population.

This translocation proposal follows the same framework as the successful translocations from Montana to Alberta in 2011 and 2012. During these years 41 sage-grouse (38 females and 3 males) were captured in South Valley and Phillips counties, Montana and released on active leks in Alberta. In July 2015, the last transmission was received from the monitored batch of sage-grouse from the 2011-12 translocations. These birds provided a substantial contribution to the Alberta population and AEP believes that these initial translocations staved off the extirpation of sage-grouse (Whiklo and Nicholson 2014). Alberta recorded the first significant increase in the resident sage-grouse population in approximately 20 years during lek monitoring in 2015 (150% increase). The initial translocation also provided abundant information to direct management practices to increase the resident population and to ensure greater success from subsequent translocations.

Chapter 1.0: Purpose of and Need for Action

1.1 Proposed Action

MFWP and AEP propose to translocate up to 40 sage-grouse biennially between 2016 - 2020, totaling up to 120 sage grouse over the five year period from North Central Montana Region 6 to Southeast Alberta in suitable sagebrush habitat. Translocation will be dependent on sage-grouse lek surveys completed the prior spring in South Valley and Phillips Counties on 16 predefined sage-grouse leks (Appendix 6). If the prior years' sage grouse lek surveys indicate a population decrease to 45% below long term average, then no translocation will occur for that year. MFWP may suspend translocation efforts due to previously translocated birds not meeting short term objectives (short term translocation objectives defined *a posteriori*).

1.2 Need for the Action

Sage-grouse are a species of concern across much of their range. Range-wide contractions in abundance and distribution have caused wildlife managers great concern over the past half century (Connelly and Braun 1997). A recent population review of the greater sage-grouse in Canada noted a decline of 66 to 92% in abundance from 1970 population levels (Figure 1; Aldridge and Brigham 2003). Further reviews of the Alberta population agreed with these estimates placing declines at 80% over the same time period (Connelly *et al.* 2004). In response to these declines, the Alberta government 'blue listed' sage-grouse in 1996 as a species that may be at risk (Alberta Wildlife Management Division 1996), upgrading the listing to *endangered* under Alberta's Wildlife Act in 2000. Similar declines in distribution and abundance were noted in neighboring Saskatchewan leading to listings of potentially threatened in 1984, *threatened* in 1987 and *endangered* in 1999 (Environment Canada 2014). Federally, the Committee on the Status of Endangered Wildlife in Canada (COSEWIC) listed sage-grouse as a *threatened* species in 1997 and *endangered* in 1998. In 2000, COSEWIC confirmed the listing as endangered and the species was listed under the federal *Species at Risk Act* in 2003 (Environment Canada 2014).

In the United States, sage-grouse remain under the states' management. On March 5, 2010, the U.S. Fish and Wildlife Service (USFWS) determined that the greater sage-grouse warrants protection under the Endangered Species Act, but that listing the species under the Act is precluded by the need to address other listing actions of a higher priority. Further consideration for listing of the species by USFWS was undertaken based on the May 2011 settlement between the Department of Justice and petitioning non-governmental organizations. On September 21, 2015 the determination was made that sage-grouse do not warrant federal listing currently, due to core

population numbers and ongoing conservation measures. Currently, Montana considers sage-grouse as both a Species of Concern and an upland game bird having stable populations. Undoubtedly, high densities of sage-grouse across Montana have provided a valid reason precluding listing, including the presence of at least two of North America’s core breeding populations (Connelly *et al.* 2004). One of these includes a strong subpopulation between the Missouri River and the Milk River. Sage-grouse occurring north of the Milk River in predominantly silver sagebrush habitats remain at lower densities than sage-grouse south of the Milk River. Many areas north of the Milk River have also experienced a reduction of sage-grouse from historic distributions, including areas directly south of the Alberta and Saskatchewan boundaries. Some of these areas may still facilitate dispersal into or exchanges with Canadian populations, although it is likely that such movements have been greatly reduced (Bush *et al.* 2010). Small sub-populations in this region may be dependent on connectivity with larger core populations.

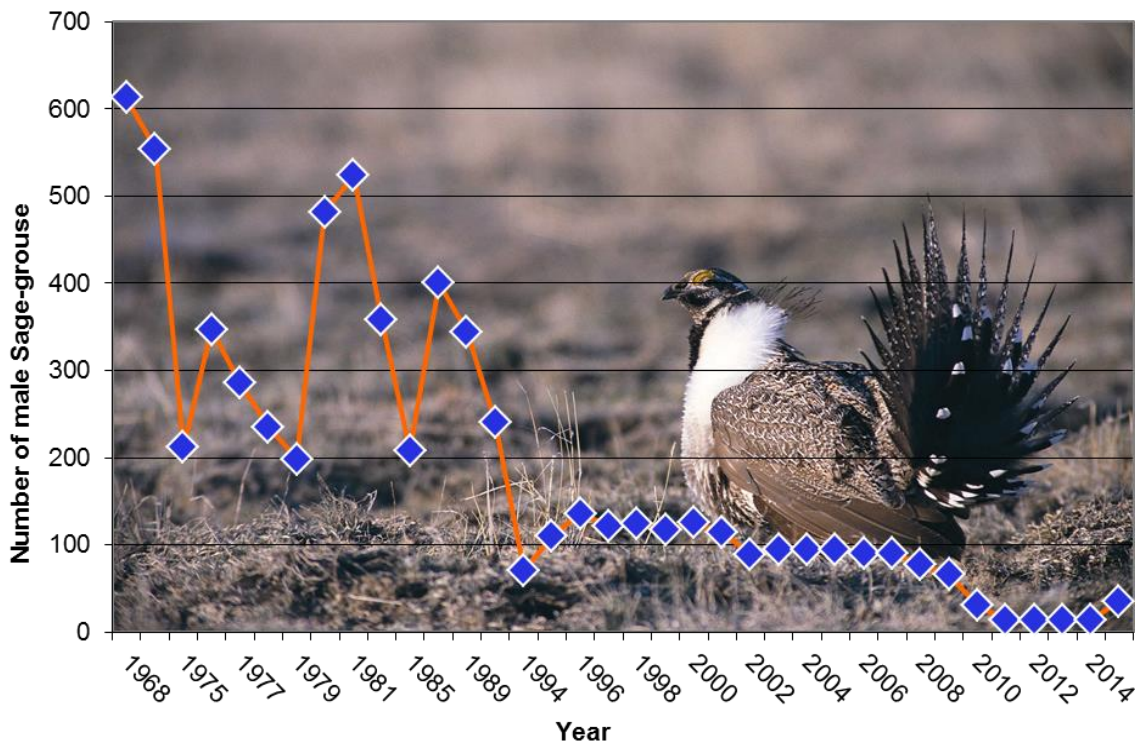


Figure 1 - Trend of strutting male attendance at Alberta sage-grouse leks 1968-2015.

Historic sage-grouse declines are primarily attributed to habitat alteration and degradation (Appendix1; Schroeder *et al.* 2004). In Alberta, original range contracted from approximately 49,000 km² to what is now considered the Alberta sage-grouse recovery area; 4000 km² centered south east of Manyberries (Aldridge and Brigham 2003, Alberta Sage-grouse Recovery Team 2013). Although current cultivation pressures are limited in the Alberta recovery area, past conversion to agricultural crops in the Northern Sagebrush Steppe (NSS) has reduced the distribution of sage-grouse in silver sagebrush habitats and has reduced connectivity between remaining patches (Bush *et al.* 2011) (Figure 2). Other pressures such as energy and transportation infrastructure development in combination with uncertain effects of climate change are incrementally

mounting, degrading the suitability of remaining habitat. Added to these difficulties, the arrival of West-Nile virus in the region in 2003 had a substantial impact, decreasing late-summer survival of females by an estimated 25% for that year (Naugle *et al.* 2004). Currently, subpopulations in both Alberta and Saskatchewan may have been reduced to below minimum viable size (Environment Canada 2014).

The critical status of the silver sagebrush-associated sub-populations warrants special attention by governments in the transboundary region of Alberta, Saskatchewan and Montana. All options available for recovery of the species need to be considered, including short to medium term actions, and across geographic scales. In particular, immediate efforts should strive to ensure stochastic events and lag effects from past development (Holloran 2005) do not cause extirpation of sub-populations in the near term. In the longer term, population recovery will require a suite of actions and evaluations to determine success. All actions should be evaluated through an adaptive management approach, owing to uncertainty about the individual and combined causes of the decline. This environmental assessment outlines key background information and procedures for translocating sage-grouse in silver sagebrush habitats for the purpose of population augmentation.

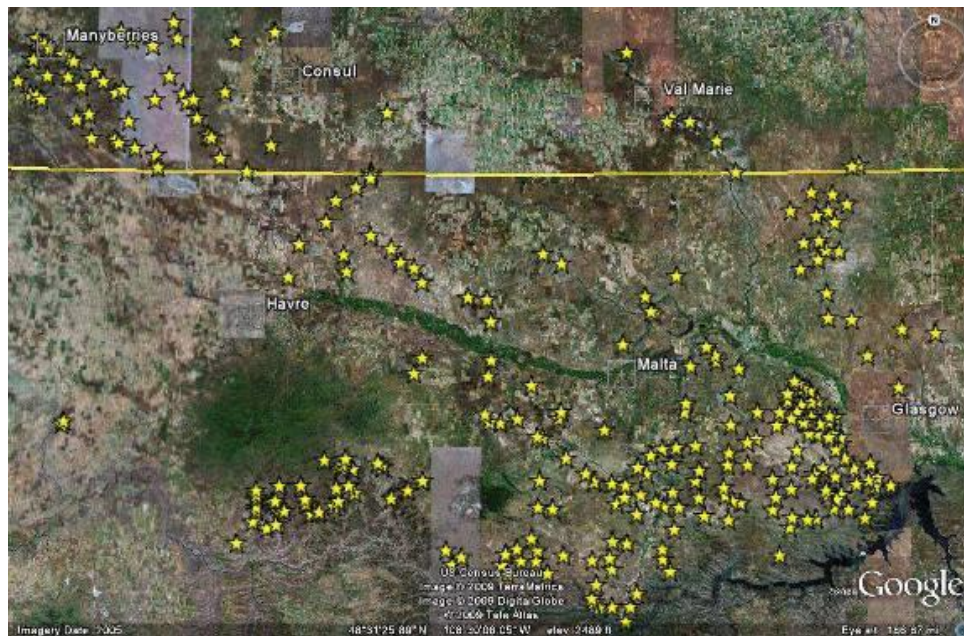


Figure 2 - Distribution of leks in the Northern Sagebrush Steppe including active leks in Montana and both active and inactive leks in Canadian jurisdictions.

(Position of leks indicates where corridors linking population units are likely located)

1.3 Objectives of the Action (desired outcomes and conditions)

The goal of augmentation is to maintain or increase the current abundance and distribution of silver sagebrush dependent sage-grouse sub-populations in the Northern Sagebrush Steppe. Specifically, the objectives of the program are to:

- 1) Evaluate management practices designed to support maintenance and/or recovery of sub-population units prior to and post-augmentation.
- 2) Increase knowledge of best practices for sage-grouse capture, translocation and release in silver sagebrush ecosystems.
- 3) Evaluate the potential for augmentation to maintain or increase the number of sage-grouse associated with treated and adjacent leks in silver sagebrush ecosystems.
- 4) Coordinate augmentation with habitat restoration activities to achieve long term self-sustaining sub-population units.
- 5) Develop a refined understanding of the spatial ecology of sage-grouse in the recovery area and the Northern Sagebrush Steppe as a whole.
- 6) Collaborate with agencies, corporations and local communities to build awareness and increase support for sage-grouse conservation.
- 7) Effectively communicate results of the project to the public through information and education branches of relevant agencies and organizations.
- 8) The short term translocation objectives for 40 sage-grouse hens will be the expected 10 – 21 nests and 27 – 57 fledged sage-grouse in year 1.

1.4 Relevant Plans, EISs, EAs, Regulations, and Authorities

- Northern Sagebrush Steppe Greater Sage-grouse Recovery: Proposal for translocating sage-grouse into silver sagebrush communities in Alberta for population augmentation 2010.
- Alberta Greater Sage-grouse Recovery Plan 2013-2018.
- Management Plan and Conservation Strategies for Sage-grouse in Montana – Final 2005.
- State of Montana, Office of the Governor, Executive Order 10-2014 and 12-2015 creating the Montana Sage Grouse Oversight Team and the Sage Grouse Habitat Conservation Program
- Amended Recovery Strategy for the Greater Sage-grouse (*Centrocercus urophasianus*) in Canada.

1.5 Decision That Must Be Made

The decision to be made is whether MFWP should or should not approve the translocation of up to 40 sage-grouse biennially for 5 years totaling up to 120 sage grouse, from South Valley and Phillips Counties to Southeast Alberta. This EA discloses the analysis and environmental consequences associated with implementing both of the alternatives and will provide information and analysis to determine whether an action results in a significant effect and would, therefore require the completion of an Environmental Impact Statement (EIS). If an EIS is not required, a Decision Notice will document the decision and rationale.

1.6 Applicable Permits, Licenses, and Other Consultation Requirements

- Canadian Food Inspection Agency Import Inspection Certificate
- Canadian Food Inspection Agency Import Permit
- United States Department of Agriculture (USDA) Origin Health Certificate
- United States Fish and Wildlife Service (USFWS) Federal Fish and Wildlife Permit
- USFWS Declaration of Exportation of Fish and Wildlife
- Montana Fish, Wildlife and Parks (MFWP) Scientific Collectors Permit
- Approval of animal capture, handling and care protocols will be acquired from an approved Institutional Animal Care and Use Committee (IACUC)
- Coordination Requirements: Coordination at the US/Canadian border is required to ensure the grouse are efficiently transported across the international border.
- DNRC Letter of Authorization to utilize state school trust land for capture
- BLM Letter of Authorization to utilize BLM land for capture

2 Chapter 2.0: Alternatives Including the Proposed Action

2.1 Introduction

The sage-grouse translocation project as proposed by MFWP and AEP would provide for up to 40 individual sage-grouse to be translocated from Montana to Alberta biennially for 5 years totaling 120 sage grouse, between 2016 - 2020. Translocations will occur in 2016, 2018 and 2020 unless sage-grouse populations on predetermined leks in Montana fall below 45% of long term average or previously translocated birds

fail to meet short term objectives (short term translocation objectives defined *a priori*). Sage-grouse for translocation will be obtained from one of Montana's two core populations, which is located north of the Missouri River and south of the Milk River, in southern Valley and Phillips Counties in Montana Fish Wildlife and Parks Region 6.

2.2 Process Used to Develop the Alternatives

Sage-grouse source populations considered include populations in north, central, or east-interior Montana, with northern Montana being the most logical source population (Figure 3). Sage-grouse in these locations are genetically similar to sage-grouse in Alberta, have adequate abundances to draw from, and are within logistical proximity of the release site. Sage-grouse from all other populations are either genetically distant from Alberta sage-grouse or have inadequate populations.

2.2.1 History and Development Process of Alternatives

Schroeder *et al.*, (2006) outlined the criteria that recipient jurisdictions should consider when selecting possible source populations for translocation. In particular, they suggested that source populations be:

1. Of the same species and subspecies;
2. Genetically, medically, and demographically healthy;
3. Translocated to similar habitat.

Other key considerations include the proximity of the source population to the release area, the presence of adequate populations, genetic management of the recovery population, ongoing cooperative management and research between jurisdictions, and agreements and/or MOU's that are in place between donor and recipient jurisdictions (IUCN 1998, Schroder *et al.* 2006) (Figure 4 and 5). Table 1 provides a summary of possible source populations as described by Connelly *et al.*, (2004), Oyler-McCance *et al.*, (2005), and Bush *et al.*, (2010), with respect to the above criteria.

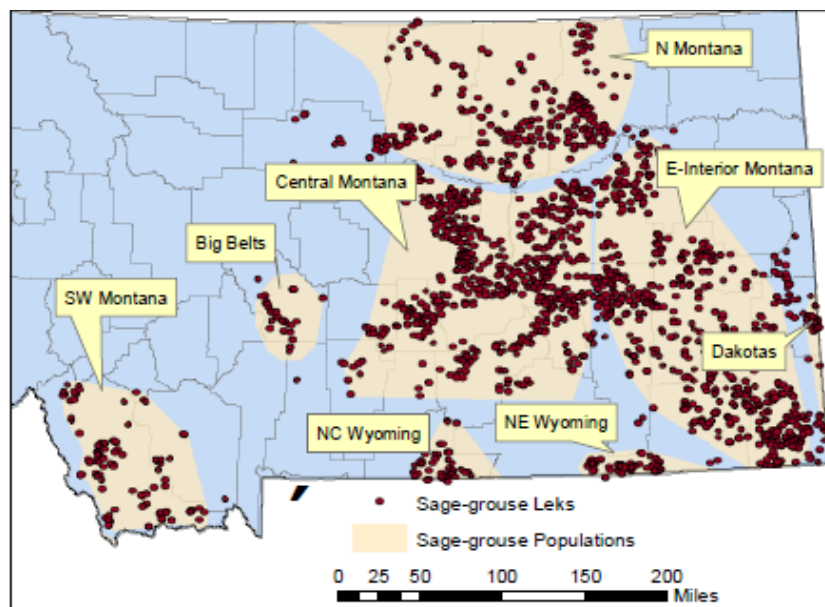


Figure 3. Sage-grouse population strong-holds in Montana considered in the alternatives.

Table 1: Comparison of desirable attributes between possible source populations as defined by Connelly *et al.*, (2004).

(Key responses that negate the source population are highlighted)

Population	Similar Habitat	Proximity (Manyberries to source in Kilometers)	Adequate Population	Same Genetic Cluster	Western Governors' Association	Northern Sage Steppe Initiative	WAFWA Sage-grouse Recovery
North Montana	Yes	333	Yes	Yes	Yes	Yes - Focus	Yes
Central Montana	No	526	Yes	Yes	Yes	Yes	Yes
E-Interior Montana	No	870	Yes	Yes	Yes	Yes	Yes
Belt Mtn. Montana	No	575	<u>NO</u>	NA	Yes	Yes	Yes
Southwest Montana	No	660	Yes	<u>NO</u>	Yes	Yes	Yes
Northeast Wyoming	No	1075	Yes	<u>NO</u>	Yes	No	Yes
N-Central Wyoming	No	900	Yes	<u>NO</u>	Yes	No	Yes
Dakotas	Yes	1100	<u>NO</u>	<u>NO</u>	Yes	No	Yes
Idaho	No	850	Yes	<u>NO</u>	Yes	No	Yes
NOTE:	1	2	3	4	5	5	5

1. Similar habitat is considered use of silver sagebrush communities;

2. Proximity is the distance between Manyberries, Alberta and a source population median; 3. Adequate populations are based on Connelly *et al.*, (2004);

4. Genetic cluster is based on analysis presented in Figures 4-5, Oyler-McCance *et al.*, (2005), and Bush *et al.*, (2011);

5. Membership in the aforementioned co-management and collaboration MOU's.

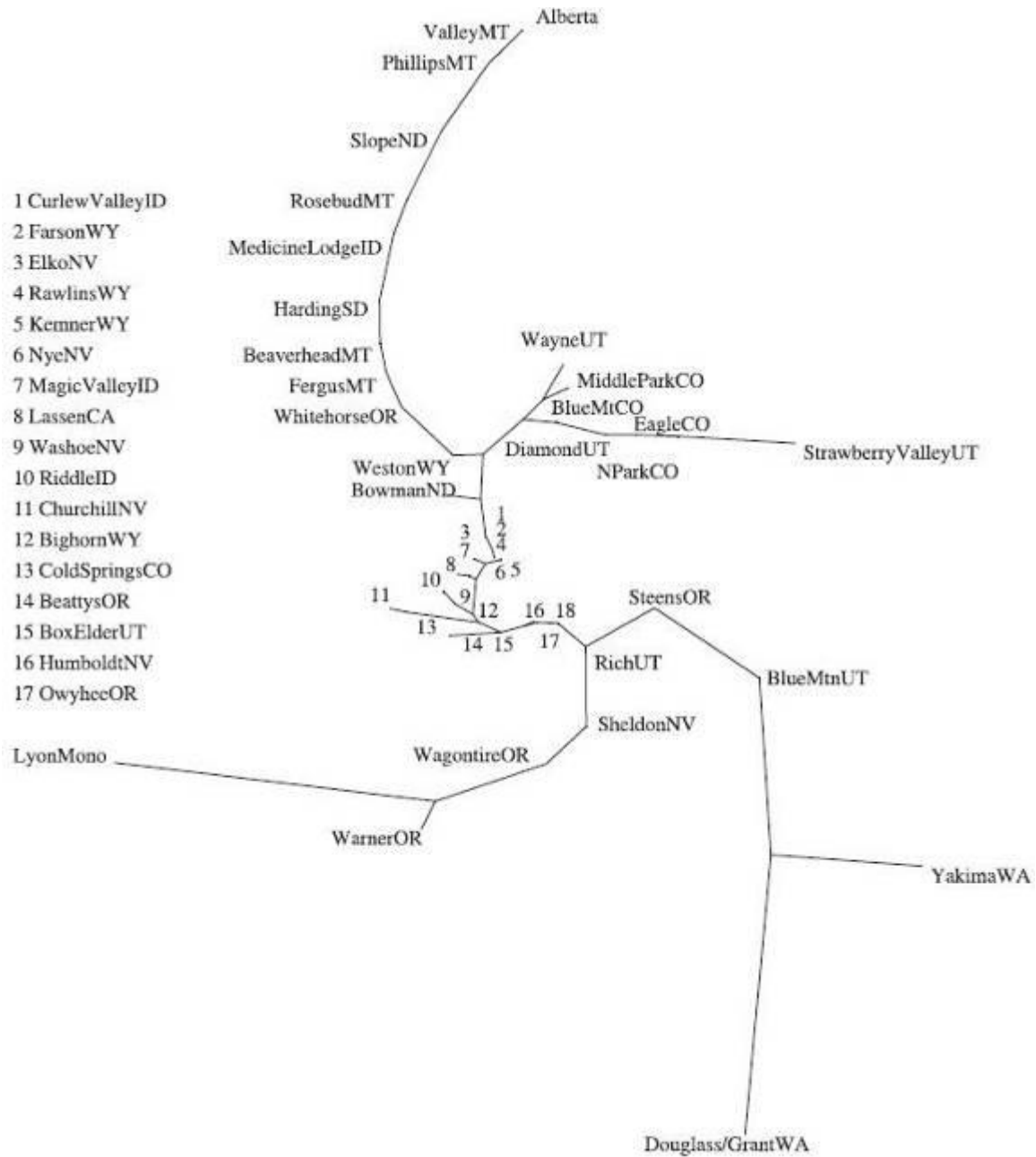


Figure 4: Genetic distance using a neighbor-joining tree where longer lines represent greater genetic distance.

Alberta subpopulations are most similar to sage-grouse in Valley and Phillips Counties in northern Montana (From Oyler-McCance *et al.*, 2005)

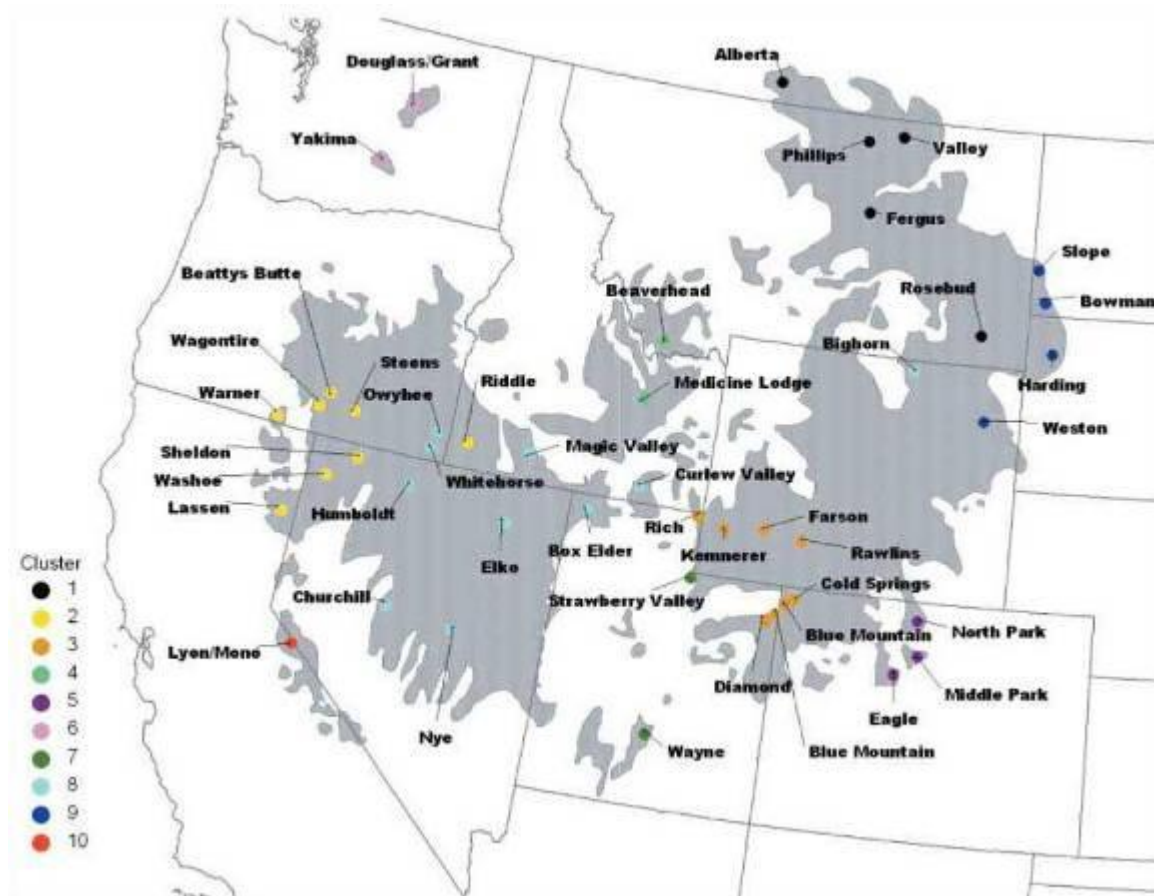


Figure 5: Distribution of sage-grouse populations based on colored cluster points and the origin of samples of Figure 4.

(From Oyler-McCance *et al.* 2005)

Montana is the most logical source as populations are close, appear to be healthy, and with the exception of its southwest population, are genetically similar. The state is also a member of all three inter-jurisdictional MOU's. Collaboration with Montana would provide an excellent example for implementing all three MOU's, in particular the newly drafted WGA resolution and Northern Sagebrush Steppe Initiative (NSSI). Central and northern Montana ranks the highest of all choices. Central Montana would be slightly further than northern Montana pending the choice of trapping locations. Eastern-Interior Montana would be further still, although retaining similar genetic structure to the recovery population. All other options appear less likely as they either do not contain sufficient populations, are genetically different, or are too far from the augmentation sites.

2.2.2 Alternatives Eliminated from Detailed Study

The following sage-grouse populations were considered for source populations but were eliminated because they do not meet the three criteria set forth by Schroder *et al.*, (2006):

1. The Idaho population is genetically dissimilar, and does not occupy similar habitat.
2. The Dakotas' population does not have adequate population size, and is genetically dissimilar.
3. The North Central Wyoming population is genetically dissimilar, and does not occupy similar habitat.
4. The Northeast Wyoming population is genetically dissimilar, and does not occupy similar habitat.
5. The Southwest Montana population is genetically dissimilar, and does not occupy similar habitat.
6. The Belt Mountains Montana population does not have adequate population size, and does not occupy similar habitat.
7. The East-Interior Montana population does not occupy similar habitat.
8. The Central Montana population is further from Alberta and there is not the working relationship between AEP and regional MFWP personnel.

2.3 Description of Alternatives

This EA evaluates two project alternatives in detail. These include Alternative A, the *No Action Alternative* (Section 2.3.1) and Alternative B, the *Southern Valley and Phillips Counties Sage-grouse Translocation Alternative* (Section 2.3.2).

2.3.1 Alternative A: The No Action Alternative

The *No Action Alternative* means that no sage-grouse would be captured and translocated from private lands and public lands managed by the BLM and DNRC in southern Valley and Phillips Counties. The environmental impacts and benefits as described in this EA (see Chapter 3) would not occur.

2.3.2 Alternative B: The Southern Valley and Phillips Counties Sage-grouse Translocation Alternative

Alternative B would provide 40 individual sage-grouse biennially between 2016-2020 (totaling up to 120 sage grouse over the next five years) to be translocated from Montana to Alberta. Translocations will be dependent on sage grouse lek surveys completed the prior spring in South Valley and Phillips Counties on 16 predefined sage grouse leks (Appendix 6). If the prior years' sage grouse lek survey indicated a population decrease below 45% of the long term average, then no translocation would occur in that year. MFWP may also suspend translocation efforts due to previously translocated birds not meeting short term objectives (short term translocation objectives defined *a priori*). Source populations for this project will include obtaining sage-grouse from one of Montana's two population strongholds, specifically the subpopulation located north of the Missouri River but south of the Milk River, in southern Valley and Phillips Counties.

Capture Location

Within the South Valley and Phillip County area, six sage-grouse lek complexes have been identified (Figure 6). Of the lek complexes, the Beaver Creek and Dry Fork complexes in Phillips County and the Larb Creek, Bentonite, and Willow Creek complexes in Valley County are the most appropriate capture locations. These complexes are easily accessible and contain ample numbers of active leks. Furthermore, leks within these complexes are regularly monitored and exhibit stable sage-grouse population levels. Coordination with the respective public land management agency(s); or permission from private landowner(s) is crucial to accessing any sage-grouse leks.

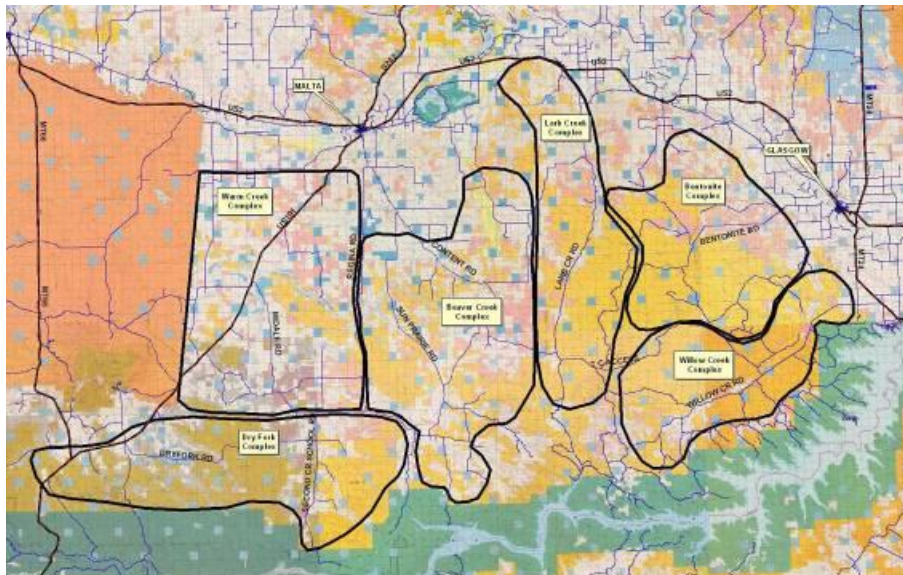


Figure 6. Sage-grouse lek complexes in south Valley and Phillips Counties, MT.

Capture Numbers

Captures would occur in the spring of 2016, 2018 and 2020 (dependant on population trend and success of prior translocated sage grouse in Alberta), targeting up to 40 sage-grouse for translocation during each of those years. Female sage-grouse will be preferred for the translocation as the augmentation is attempting to increase populations rather than manage genetics (Schroeder *et al.* 2007a). Further to this, yearling hens will be targeted to the extent possible, in an attempt to mitigate effects on the donor population. These methods would be repeated biennially (2016, 2018, and 2020) over a 5 year period.

Using expected survival, nesting, and recruitment values presented by Aldridge (2002) and Baxter *et al.*, (2008), this number of grouse should be expected to provide 11-17 nests, 48-76 fledged grouse, and approximately the same number of grouse (i.e. 40) entering the breeding period in year 2. However, data from prior translocations from Montana to Alberta in 2011-12 provide a more accurate estimate for expected first year success from translocated sage-grouse in silver sagebrush habitat. Previous nest initiation rates ranged from 0.25 in 2011 to 0.52 in 2012 (Whiklo and Nicholson 2014), predicting 10 – 21 nest initiations from 40 translocated hens. Nest success of previously translocated hens averaged 0.364 (Whiklo and Nicholson 2014), resulting in an expected 3.64 – 7.64 successful nests in year 1. Based on the average clutch size of 7.4 from the previously translocated hens, these nests would provide an expected 27 – 57 fledglings in year 1. Previously translocated hens continued to contribute to the resident population for years after release and, as with other studies of translocated sage-grouse (Baxter *et al.* 2008), reproductive success rates of individual translocated hens increased in the years after their release. Additionally, values presented here reflect reproductive rates prior to AEP implementing a predator management program for sage-grouse. This program was developed under the adaptive management framework and through the data collected from translocations in 2011-12. AEP anticipates reproductive rates will exceed those from previous translocations, based on results from ongoing recovery initiatives.

The numbers above would provide an estimate of success. Success of proposed objectives as measured by the integration of translocated sage-grouse with local grouse, desired vital rates, and abundance indices would require a multi-year effort to improve the probabilities of achieving adequate sample size in subsequent years of monitoring. Success of proposed objectives may be affected by stochastic events, which are beyond the control of AEP or Alberta recovery initiatives. Events such as outbreak of disease (i.e. West Nile virus) or poor environmental conditions (i.e. conditions not conducive to successful nesting) will be considered when determining success of short term

translocation objectives. These stochastic events may not preclude further translocations, despite short term objectives not being met.

Capture Timing

Capture efforts will be focused during the spring breeding period (late March and early April; Figure 7) which is considered the best period to capture and translocate sage-grouse (Musil *et al.* 1993, Reese and Connelly 1997, Baxter *et al.* 2008). Spring captures are advantageous because sage-grouse hens are concentrated near leks and when transported to Alberta and released near leks they may be attracted to displaying males for breeding. Although captures will occur throughout the breeding period, captures will be focused in the latter three quarters of breeding. This will enhance the probability of hens nesting near the release sites which should anchor hens to an area, reducing mortality and increasing recruitment (Coates and Delehanty 2006). Yearling hens will be targeted for translocation to the extent possible.

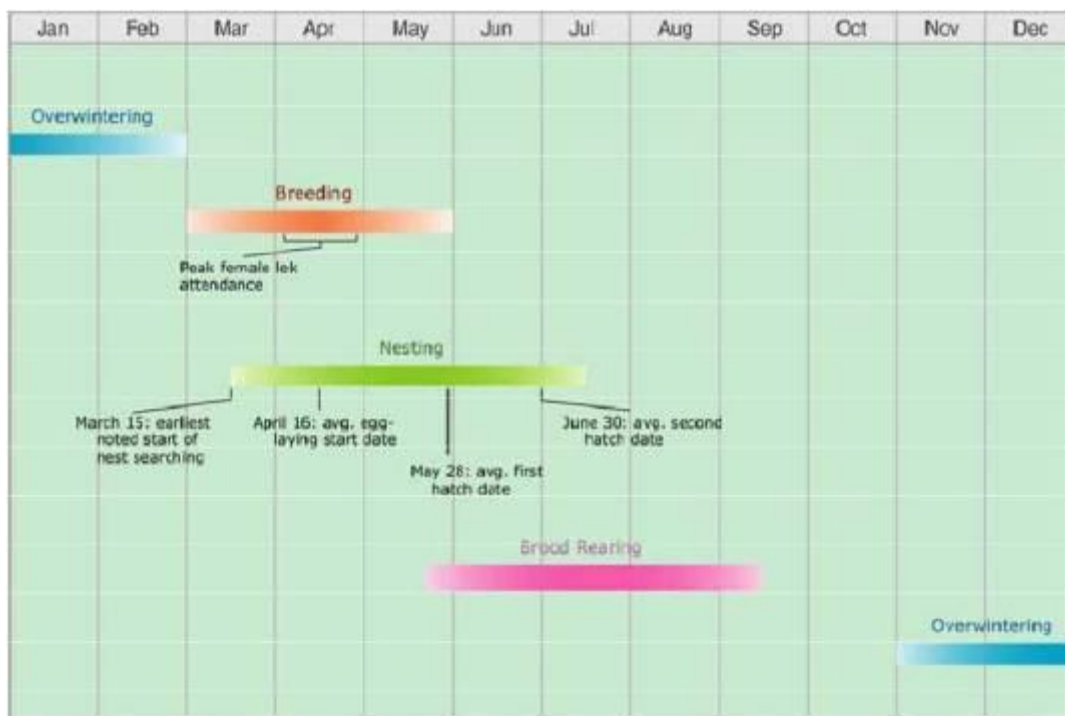


Figure 7. Annual life cycle of sage-grouse.

(Alberta Sage-grouse Recovery Team 2013)

Capture Methods

To date, most efforts have used spotlighting as the primary mechanism to capture sage-grouse (Aldridge 2002, Kaiser 2006, Schroeder *et al.* 2007, Baxter *et al.* 2008, Beckstrand 2009), although net-gunning has been used in some instances (Giesen *et al.* 1982, Moynahan *et al.* 2006,

Doherty *et al.* 2008). Giesen *et al.* (1982) compared spotlight trapping and net gunning, finding the former to be far more efficient, although time of year did play a role in success. Moynahan *et al.*, (2006) used net guns successfully on lekking sage-grouse in northern Montana.

Some capture operations have employed both methods (Moynahan *et al.* 2006, Doherty *et al.* 2008), finding success to vary between capture area based on vegetation characteristics and sage-grouse density. Net gunning and spot-lighting will be used in capture areas until the most effective approach is determined for each site.

Transporting

Once captured, sage-grouse will be placed in individual containers and taken to a central location where they will be processed. Captured individuals will be assessed as described by Wallestad (1975), and fitted with numbered leg bands and a backpack style GPS transmitter. Complete handling details are found in Appendix 3. Invasive testing and sampling will be completed by qualified staff (Appendix 4). Processed sage-grouse will then be shipped to the release site. Permits from the US Department of Agriculture, Canadian Food Inspection Agency, Montana Fish Wildlife and Parks, and Alberta Sustainable Resource Development will be in place to facilitate export and import of sage-grouse (Appendix 5).

Logistics will be organized with AEP staff to transport sage-grouse across the international boundary in a timely fashion. The closest 24-hr border crossing (Sweetgrass/Coutts) will be used as it was during previous translocations. This location is further than other border crossings, with limited hours of operation; however, it is the closest border crossing that has all necessary staff to provide the clearance for translocated sage-grouse. Despite the added distance to this border crossing, no mortalities were experienced during the 2011-12 translocations due to holding time. Additionally, holding times during the 2011-12 translocations were kept under 36 hrs, far less than maximum holding times of 60-70 hrs reported by Thompson (1946; in Reese and Connelly 1997).

Release

Once at release sites, sage-grouse will be released near known lek locations. Transport containers will be positioned near (~200 to 400 meters) active strutting grounds at least one hour before sunrise. Containers will ideally be positioned downwind from leks and directed away from the sun. Both measures will increase the potential for captive sage-grouse to detect the location of strutting sage-grouse. Refinement of release protocols is ongoing to minimize disturbance to resident and released birds. Investigation into remote controlled release mechanisms

to reduce stress and release translocated birds directly onto leks is underway. Captive sage-grouse will be allowed at least one half hour of acclimatization to strutting and calling sage-grouse before being released. Prior to release, all members of the release party will vigilantly scan for avian or terrestrial predators to reduce predation effects (Baxter *et al.* 2008).

Monitoring and Evaluation

Because translocation of sage-grouse is largely experimental, this effort will be considered an adaptive management experiment. As with any adaptive management experiment, monitoring and evaluation will play a key role in the program (Table 2).

Evaluation will begin with the capture of sage-grouse and will be part of a long term strategy to determine success and to modify techniques as needed. The intensiveness (labor and monetary) and statistical requirements of the evaluation and monitoring will determine the duration of each component. In particular, each evaluation component of the project objectives outlined in Section 1.3 will be addressed, however other research questions that arise may be addressed if determined to be feasible. A selection of useful topics is presented in Table 2 and brief outlines of several monitoring and research studies that would be companion to any translocation effort are provided. Individual detailed methods will be prepared prior to any augmentation for proposed research projects.

Table 2 - An example of research categories and associated topics that could be addressed during and after the augmentation effort.

Population Demographics	Movement and Migration	Habitat and Space Use	Disease and Health Issues	Translocation Techniques
Survival	Dispersal	Seasonal Home Range Use	Parasite Load	Capture date and nest success
Mortality	Behavioral Adaptation	Seasonal Habitat Use and Selection	West-Nile Virus Sero-prevalence	Hydration Supplementation
Nest Success	Integration with Resident Grouse	Habitat Source Sink Dynamics		Capture and Release Technique
Brood Success	Movement Corridors	Effectiveness of Reclamation		Age Ratio Success

The effect of augmentation on maintaining or increasing the number of sage-grouse on treated and adjacent leks will be determined through regular lek counts using existing protocols. Lek censuses were employed irregularly in the recovery area prior to 1997 and since then annually to

determine population trends. As Alberta uses a relatively standardized approach that is consistent with other jurisdictions, macro-analysis such as that presented in Connelly *et al.* (2004) are possible, leading to increased collaboration.

Monitoring will continue in the source area to determine any effects of removing sage-grouse. Continued monitoring will provide a comparison of sage-grouse trends between leks where sage-grouse have been removed and leks with no removal. Additionally, sage-grouse leks in the source area have historical data and can provide trend data over time with and without removal.

A last series of research questions will address the spatial ecology of sage-grouse in the recovery area including the following six overarching questions:

1. Are translocated sage-grouse integrating with resident sage-grouse?
 - Data from the translocations of 2011-12, indicated that translocated sage-grouse integrated with resident sage-grouse within one year of release (Whiklo and Nicholson 2014). Further data will be collected from subsequent translocations to determine fine-scale integration of translocated sage-grouse, as well as to develop techniques to decrease integration time.
2. Which age cohort of translocated female sage-grouse show the highest degree of fidelity and does this translate to higher survival and reproduction?
 - Data from previous translocations did not provide clear indication of a difference between age class and heightened survival and reproduction. Habitat fidelity, including lek fidelity, was shown to be extremely high in translocated sage-grouse.
3. What habitats are selected seasonally and what is the influence of restored habitats on movements?
 - Previously translocated sage-grouse provided an abundance of data regarding seasonal movements. Subsequent translocations will increase movement datasets, as well as to begin to determine the role of restoration on sage-grouse habitat use.
4. Which habitats require restoration based on avoidance, survival and reproduction?

- Data from the translocations of 2011-12 are being utilized by a Master's candidate at the University of Regina to determine avoidance patterns in relation to anthropogenic structures. The preliminary results are assisting in management decisions to focus habitat restoration projects. A number of habitat improvement projects have occurred aimed at removing structures within sage-grouse habitat. Subsequent translocation will allow AEP to validate the current approach and adapt management practices.

5. How does reproduction and survival compare to baseline conditions?

- Reproduction and survival data from the initial translocation of 2011-12 not only provided wildlife managers with clear evidence that vital rates were currently in need of assistance (Whiklo and Nicholson 2014), but AEP developed a comprehensive predator management program based on this data set. Subsequent translocations are the only feasible opportunity to determine the exact effect of these management practices and to adaptively manage these programs.

6. How connected are sage-grouse sub-population units in the NSS?

- Translocated sage-grouse from 2011-12 provided valuable movement data, including evidence of wide-ranging post-release movements (Whiklo and Nicholson 2014). Further data is required to understand connectivity within the NSS.

Agency Responsibilities

AEP and MFWP will coordinate capture operations during each translocation year. MFWP will be responsible for identifying leks targeted for translocation, securing land agency or landowner permission, field personnel (as available) to assist in directing and carrying out the capture with equipment and vehicles available at the time of the capture, and one veterinarian to perform health checks and complete USDA Origin of Health Permit. AEP will secure IACUC approval and MFWP scientific collectors permit, all applicable permits for importation into Alberta, provide all specialized equipment needed to carry out the capture (lights, nets, transmitters, etc.), field personnel, vehicles, and one veterinarian.

3 Chapter 3.0: Affected Environment & Predicted Environmental Consequences

3.1 Introduction

Section 3 describes the physical, biological, and human resources of the environment that may be affected by the alternatives presented in the previous section and the environmental effects that the alternatives may have on those resources. Affected environment and environmental consequences have been combined into one chapter to provide a more concise and connected depiction of what resources exist in the project area that are directly associated with the proposed action.

3.2 Description of Relevant Pre-Existing Factors

3.2.1 Pre-existing factors in Montana's South Valley/Phillips core sage-grouse area

Over the last 5 years (2011-2015) 142 sage-grouse leks have been monitored across south Valley and Phillips Counties in the area of sage-grouse are proposed to be removed from. Not all leks are surveyed annually. Because of this, it is necessary to use a block of survey years to estimate a minimum average population size.

- The total average high male count for the surveyed leks was 2,484 male sage-grouse.
- Braun (2002) estimated 75% of males are counted on leks. Dividing the above number by .75 provides a minimum spring male estimate of 3,312 male sage-grouse
- Braun (2002) estimated that for larger sage-grouse populations (>300 males counted on > 20 active leks each spring), there would be 2 hens per male in the spring. That provides a spring hen estimate of 6,624 hen sage-grouse.
- The total estimated spring population based on male attendance of surveyed leks is a minimum of 9,936 sage-grouse in south Valley and Phillips Counties.

Sage-grouse populations in the identified Montana source area are determined to be stable. Counting males on all leks in a 100 square mile block in Valley County provides an additional measure of trend in the source area. In 2015 a total of 238 male sage-grouse were observed, which is 6% below the long-term average (1999 - 2015, 256) and 5% below the last 10-year average (252). The number of males per lek averages 24 over the last 10 years (Figure 8).

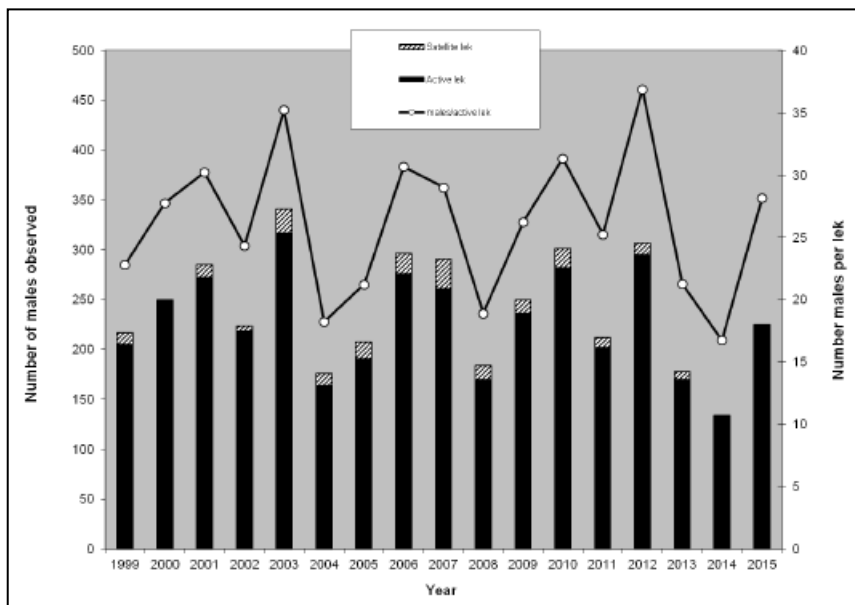


Figure 8. Sage-grouse male counts on the Valley County block

Twenty-five leks in Region 6 serve as Adaptive Harvest Management (AHM) leks that are used to evaluate annual population trends for setting sage-grouse hunting seasons (Montana Sage-grouse Management Plan 2005). Some of the Valley county block leks are included in the AHM lek list with additional leks in Phillips, Blaine and McCone Counties. Thirteen of those leks are located in South Valley and Phillips Counties. Data from these leks are comparable only for the last 10 years due to inconsistent past monitoring effort. Number of males per lek averaged 28.1 over the last 10 years (Figure 9).

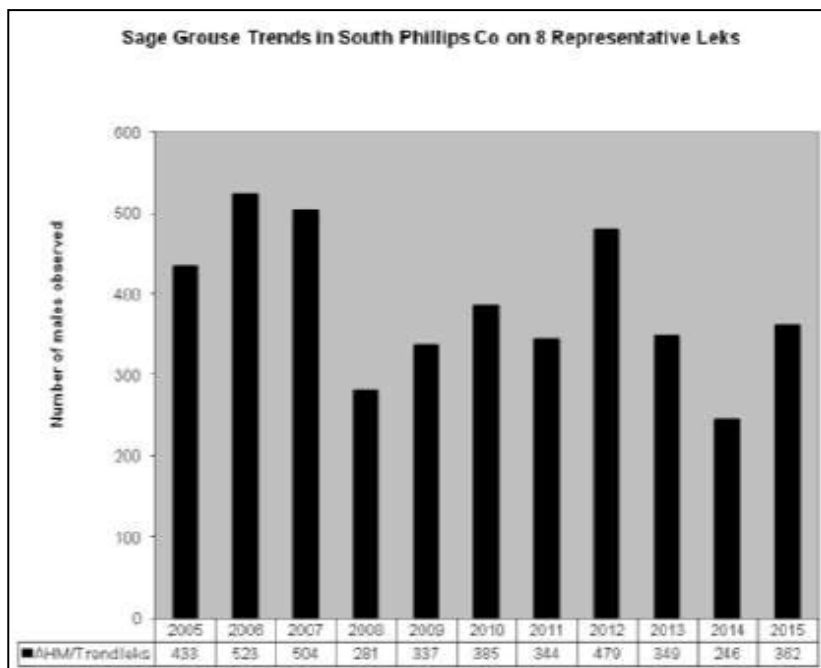


Figure 9. Sage-grouse male counts on 21 AHM leks in South Valley/Phillips County.

Sage-grouse habitat in the proposed source area is dominated by Wyoming big sagebrush with silver sagebrush in riparian areas. The area defined as a sage-grouse core area is centered in South Valley and south Phillips Counties and encompasses approximately 5,180 km² (2,000 m², Figure 10).

Sage-grouse habitat in the South Valley/Phillips area is in generally good condition primarily due to maintaining large tracts of big sagebrush habitat. Livestock ranching is the predominant land use in this area, which has conserved large blocks of native sagebrush grassland habitat on private and public lands. Additionally, past and future expectations for oil and gas exploration are minimal, further maintaining continuous sagebrush habitat.

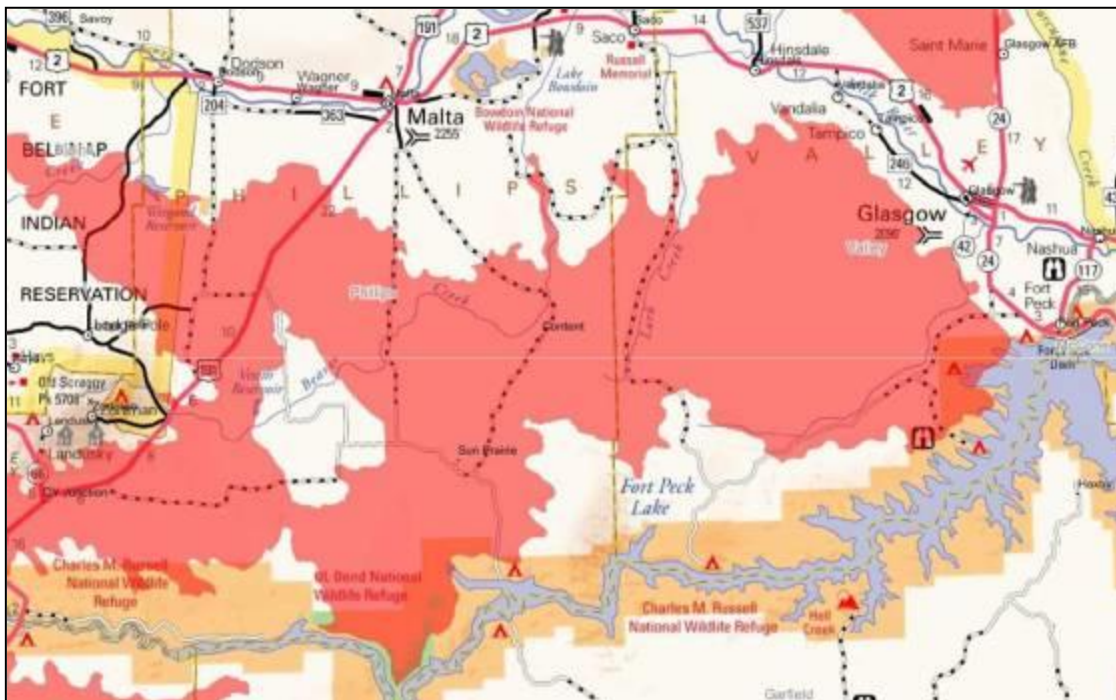


Figure 10. South Valley/Phillips County sage-grouse core area.
(designated in red overlay)

3.2.2 Pre-existing factor in southeast Alberta's sage-grouse habitat

Historically, sage-grouse in Alberta occupied silver sagebrush habitats ranging from Empress in the north and Lethbridge in the west (Figure 11). More recently, sage-grouse have been limited to habitat within a ~4000 km² area in the southeast corner of the province, south of the Cypress Hills and east of Pakowki Lake. This will be the area considered for all current augmentation efforts proposed herein.

Because of this historic loss of habitat combined with current threats (see Appendix 1 for a review of past, current, and future threats), Alberta's sage-grouse have undergone declines in abundance of 66 to 92% from 1970 population levels (Aldridge and Brigham 2003). Concerted efforts over the past 17 years focused on counting strutting males and

found a maximum of 35 on a single lek in 1999 and a mean of 13.3 across all leks considered to be active during this entire period. In 2009, prior to the 2011-12 translocations, a maximum of 11 males were observed on a single lek (Balderson *et al.* 2013). These values when considered with long-term trend data (Figure 1) and reduction in range (Figure 11) denote a decline in Alberta's sage-grouse population. The downward trend can likely be attributed to pressures as outlined in Appendix 1. However, after the successful translocations of 2011-12, two leks were observed with 12 strutting males each and a total of 35 strutting males were observed in Alberta in 2015. Primary concerns where management actions will play a key role are the impacts of industrial activities (e.g., auditory, direct loss of habitat, fragmentation effects), grazing management (e.g., appropriate range conditions, forb development, avoiding conflicts with cross-fencing and watering), and land use (e.g. maintaining native

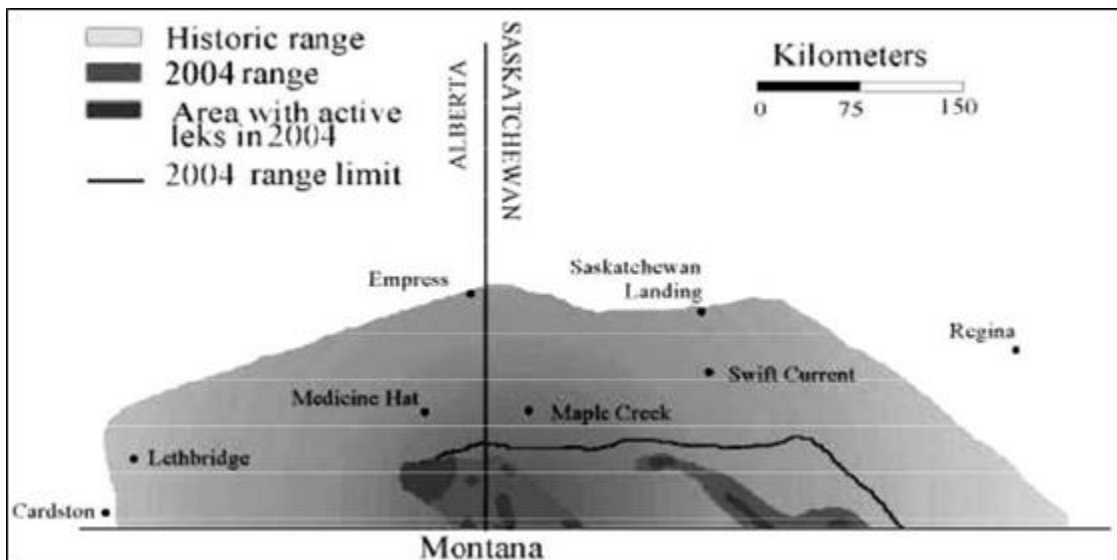


Figure 11. Historic and current distribution of sage-grouse in Alberta and neighboring Saskatchewan.

(Alberta Sage-grouse Recovery Team 2013)

component, reclaiming converted lands). Predation on nests and brooding hens could also prove substantial (Beckstrand *et al.* 2009). Although predator control has been successful in facilitating augmentation (Baxter *et al.* 2008), other research has suggested that the effects on sage-grouse may be exacerbated by coyote control (Mequida *et al.* 2006) and in some cases predation rates by some species on nests may not be as substantial as once thought (Michener 2005). Predator control has been less successful in areas where predator immigration is challenging to control (Reese and Connolly 1997). However, based on the data obtained through previous translocations from Montana to Alberta, a comprehensive predator management program was implemented by AEP in 2013. This program has targeted known predators of sage-grouse and their nests, as determined through previous translocation data, and has been deemed to have successfully reduced predator pressure on the Alberta population. This program has been escalated in preparation for subsequent translocations and will greatly benefit from GPS data from subsequently translocated sage-grouse.

3.3 Relevant Resource #1- Sage-grouse population effects in South Valley\ Phillips core area

3.3.1 Effects of Alternative A: No translocation (No Action)

- Direct Effects: No action would result in no short-term reduction in the adult sage-grouse population immediately around source leks. No potential population reductions due to removal of sage-grouse hens and their subsequent broods will occur.
- Indirect Effects: No action would result in no additional disturbance on sage-grouse leks. There will be no effect on the nesting success of hens being bred on those leks.

3.3.2 Effects of Alternative B: The Southern Valley and Phillips Counties Sage-grouse Translocation Alternative

- Direct Effects: The translocation would remove up to 40 sage-grouse hens from South Valley/Phillips core area biennially between 2016 - 2020 with the eventual removal of up to 120 hens. Based on population estimates discussed in 3.2.1, this would remove 0.6% (0.006) of the estimated hen population and 0.4% (0.004) of the total estimated sage-grouse population in Valley and Phillips Counties. Furthermore, this level of removal is significantly less than what is removed through regulated fall hunting in the area. Removal of up to 40 sage-grouse is expected to have minimal short-term effects and have no population level effects. Furthermore, capture efforts will be dispersed among different leks at the direction of MFWP staff. This will serve to spread out impacts to minimize them on any one lek site.

FWP sage grouse monitoring following captures in 2011 and 2012 has shown that sage grouse trapping activities and subsequent translocations have not had any negative impacts on the long term lek attendance of individual leks. FWP has compared trend data on leks that were trapped during the 2011-2012 translocations to the total trend data for Southern Valley and Phillips counties. Trend data for those leks searched or captured on did not differ from other leks, between counties or the AHM leks that are monitored annually following the first translocations.

- Indirect Effects: Increased disturbance on source leks would likely increase stress on non-captured hens and may reduce breeding success and subsequent nesting success of those hens. However, these effects are expected to be minimal and have no population level effects.

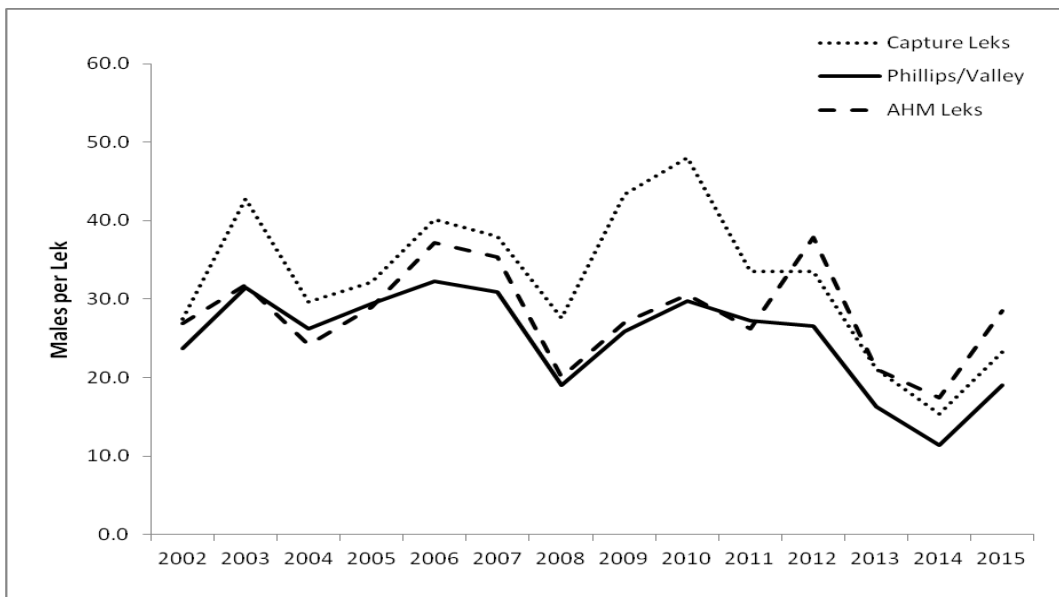


Figure 12. Sage grouse trend data for AHM, South Valley and South Phillips county leks and 2011/2012 capture leks 2002-2015.

3.4 Relevant Resource #2 - Sage-grouse population effects in silver sagebrush habitat north of the Milk River in Montana and Alberta

3.4.1 Effects of Alternative A: No translocation (No Action)

- Direct Effects: Not augmenting the Alberta sage-grouse population would make conserving and restoring limiting habitat features in Southeast Alberta the sole method of attempting to reverse the declining trend of sage-grouse numbers.
- Indirect Effects: Sage-grouse are known to migrate between northern populations north of the Milk River to points south of the Milk River (Tack 2009). The no action alternative will not change or have any effect on the natural trend that is occurring with sage-grouse dispersal and migration between Northern Montana and Alberta.

3.4.2 Effects of Alternative B: The Southern Valley and Phillips Counties Sage-grouse Translocation Alternative (Proposed Action)

- Direct Effects: Using expected survival, nesting, and recruitment values presented by Aldridge and Brigham (2002) and Baxter *et al.*, (2008) the translocation of this number of grouse would be anticipated to provide 11-17 nests, 48-76 fledged grouse, and approximately the same number of grouse (i.e. 40) entering the breeding period in year 2. A higher rate of nesting in overwintering grouse would be anticipated (Baxter *et al.* 2008), and 15-22 nests would be expected from this initial group of translocated grouse and their offspring in year 2. Any increases in sage-grouse

abundance from recruitment would be detected in year 3 of the program.

- Indirect Effects: There is increased potential for sage-grouse dispersal and migration between Northern Montana and Alberta; as well as maintenance of connectivity between the sage-grouse populations. This action could provide benefit to the larger sage grouse population adjacent to the Montana border, including transboundary individuals.

3.5 Relevant Resource #3 - How habitat constraints in Alberta are being addressed to improve their suitability for sage-grouse habitat.

Decreased effectiveness of remaining habitat and energy activity projections

Although habitat in the recovery area exists in quantities appropriate for recovery, the effectiveness of these habitats to maintain sage-grouse populations have decreased over the last number of decades (Aldridge and Boyce 2007). Decreases can be attributed to several sources (Appendix 1) although recent research has increasingly indicated the negative correlation between energy and extraction activities, and sage-grouse abundance and distribution. Doherty *et al.*, (2008) and Kaiser (2006) found sage-grouse avoided infrastructure associated with energy extraction activities during various seasons, while more direct decreases in survival were noted by Holloran (2005), and Aldridge and Boyce (2007). Naugle *et al.*, (2011) reviewed range-wide impacts of oil and gas development and found abandonment of leks by both female and male yearlings. Their review also highlighted decreases in female survival, that when combined with yearling abandonment resulted in 3-4 year population lag effects from development. Habitats in Alberta have been greatly impacted by these same developments. A recent analysis by Chapman (2008) found mean densities of 1.7 producing wells per km² and 4.6 per km² for all wells (producing, reclamation exempt, reclaimed, abandoned) within 3.2 km of known lek locations in Alberta. Leks still considered active as of 2008 had well densities of 1.2 and 3.9 per km² respectively. The past proliferation of well locations in the Alberta recovery area has been indicated in reductions of brood survival (Aldridge and Boyce 2007).

In 2010, AEP and industry partners completed a framework, the Conservation and Development Zones, to prioritize industrial reclamation to benefit sage-grouse. As a result, only 1 of 4 active lek buffers (2 miles) in Alberta now contains active well sites. An additional 52 well sites in areas important to sage-grouse are undergoing or are slated for reclamation within the next two years. Furthermore, AEP and Alberta Energy have collaborated to develop and implement a subsurface addendum covering the entirety of the current sage-grouse range. This addendum informs prospective buyers of mineral dispositions that surface access for development will not be provided. This tool greatly reduces the chance that any sage-grouse habitat will be attractive to future development. On February 18, 2014 the Federal Government of Canada enacted an Emergency Protection Order for sage-grouse under Section 80 of the *Species at Risk Act*. This legal designation severely restricts industrial activity related noise during the

breeding season and prohibits activities that result in the destruction of native vegetation in approximately 242,905 acres of critical sage-grouse habitat in Alberta. This includes areas around all remaining active leks where translocated birds will be released.

Other energy extraction activities such as the construction and operation of wind power facilities including high tension power transmission and electric distribution lines appear to influence sage-grouse populations negatively (Connelly *et al.* 2000, Pruett *et al.* 2009). AEP has adopted an approach from Montana (Kiesecker *et al.* 2010) to map out areas of concern for several species including sage-grouse using species' critical habitat maps. At present, there are no formal plans for wind development within the current sage-grouse distribution. Currently, AEP has put a moratorium in place with regards to wind energy development on public land within the sage-grouse range. Additionally, AEP's land use guidelines stipulate wind energy development must be situated a minimum of 8 km from sage-grouse habitat. AEP has worked with rural power providers to increase knowledge of practices that are detrimental to sage-grouse and has been successful in having power lines relocated from sage-grouse habitat to existing road right-of ways, for a net reduction of 8.84 km, and the removal of an additional 3 km of unused residential power lines.

Clearly, current and future development of energy resources will have a vital role in determining the success of any recovery effort. In particular, research presented above often indicated an increase in anthropogenic edge associated with development as a key factor. To determine future landscape scenarios based on energy activities, the Alberta Sage-grouse Recovery Team recommended a study to determine the quantities of effective habitat that might be available to sage-grouse over the next 50 years. To complete this task, Chernoff *et al.*, (2008) assessed the impacts of projected land uses on key variables important to sage-grouse. Findings revealed that direct habitat losses would likely be very small relative to the recovery area. Likewise, model projections showed declining quantities of anthropogenic edge, even if projected conventional oil and gas drilling activities were to increase threefold from projected horizons. Worst case scenarios (4-5 times expected activity) placed declining edge quantities at 10-15 years. Models using these horizons combined with the anticipated lifespan of infrastructure found that even with a doubling of expected lifespan, the amount of effective habitat for sage-grouse should increase immediately and persistently. Even a tripling of the lifespan of infrastructure based on current model projections, would result in a net gain of effective habitat over a 50 year time frame.

In the years since the initial translocations from Montana to Alberta the percentage of actively producing oil and gas wells within sage-grouse habitat has maintained at or below 26.8%. This low percentage of active wells, coupled with the strong legislation in place and increased collaboration with industrial partners, means the industrial footprint within sage-grouse habitat has already begun to shrink.

Guidance for restoration efforts

While it is difficult to project where decreasing future energy plays may be located, identification of critical habitats and areas requiring action are possible. As part of the

Canadian Sage-grouse Recovery Strategy, a technical group has completed an extrapolation of nest models developed by Aldridge and Boyce (2007) for the Canadian recovery area, which includes the Alberta recovery area (Appendix 2). The model allows managers to determine the position of critical habitats that should be conducive to high recruitment. Given that low recruitment appears to be a problem for Alberta sage-grouse (Aldridge and Brigham 2001), identifying key source habitats that will be given adequate protection is a priority. In 2014 the Federal Government of Canada released the amended federal sage-grouse recovery strategy (Environment Canada 2014), contained in this document was the delineation of Critical Habitat under the protection of the *Species at Risk Act*. AEP has amalgamated the federal critical habitat layer with the existing provincial habitat map, to create a unified layer depicting current sage-grouse habitat. In addition to the federal *Species at Risk Act* being enforced within the majority of this new layer, AEP has a Protective Notation in place for the entire habitat area. These tools will limit development within critical habitat and require petitioners to consult with AEP and/or Environment Canada on proposed development.

Reclamation and restoration activities in the recovery area

Given the limited distribution of critical habitat, reclamation and restoration of plant communities in strategic locations should have a positive impact on sage-grouse. Restoration activities will not only restore silver sagebrush communities to standards that are compatible with sage-grouse requirements, but in many cases will eliminate secondary disturbances that are responsible for the reduced effectiveness of habitats. AEP staff continues to meet with public land managers and industry in an effort to increase the effectiveness of habitat for sage-grouse. These meetings also negotiate land use standards that reduce physical and functional loss of habitat while reclamation activities create net gains in the overall quantity of effective habitat. The approach taken will seek to address the operating standards of companies, the development of new infrastructure, and the reclamation or clean-up of existing infrastructure. Gains made in each of these areas will have direct and positive impacts on sage-grouse reproduction.

Reclamation of abandoned wells may only lead to small increases in habitat but will remove negative stimuli such as heavy machinery traffic. Reclamation will also lead to decreases in infrastructure that support the presence of mesopredators and perching predators that directly prey on sage-grouse (Coates *et al.* 2008). All of these factors directly relate to sage-grouse survival. Efforts so far have been well received and ongoing meetings with high volume operators have been considered very successful with operators agreeing to participate and begin to remove extraneous infrastructure. Other anthropogenic structures, those not associated with industrial development, have been investigated by AEP. It has been determined that these structures, such as abandoned houses and barns, subsidize predator populations (Boarman *et al.* 2006) and elicit avoidance behaviour in sage-grouse (K. Balderson unpublished). As a result, AEP implemented an anthropogenic structure removal initiative in 2013. A total of 78 structures have been identified and prioritized for removal based on proximity to sage-grouse leks and habitat. Two building sites were successfully removed in the winter of 2013-14. Five additional high priority sites were removed in the winter of 2014-15. Four sites have been slated for removal in the winter of 2015-16. All sites were documented

as being subsidies for sage-grouse predators. The removal of these buildings should greatly reduce the artificial nesting and roosting habitat that has been subsidizing the local predator population (Boarman *et al.* 2006).

Alberta MultiSAR (Multiple Species at Risk) is a stewardship program directed at assisting agricultural landholders to manage landscapes directly for the benefit species at risk, while allowing producers to maintain a viable operation. In particular, MultiSAR is working to enhance and maintain habitat to satisfy sage-grouse life cycle requirements by “creating net increases in brooding, rearing, and wintering habitats, and achieving appropriate range conditions on existing habitats for sage-grouse” (Downey *et al.* 2008). Activities to achieve these objectives include reseeding previously cultivated lands back to native cover, and manipulating habitat and anthropogenic features to increase the effectiveness of those habitats. Currently, MultiSAR is developing Habitat Conservation Strategies (i.e., grazing and infrastructure plans) for ranches in the recovery area that will manage habitat directly for sage-grouse (Downey *et al.* 2008).

The Alberta Conservation Association (ACA), in collaboration with various partners, has purchased 3,249 acres of land in the sage-grouse range of Alberta. Over 1,300 acre of this was annual cropland that has been or will be reseeded to native grassland. AEP has been closely involved with these conservation lands and is continuing to provide assistance and direction to maximize the benefit to sage-grouse through these land securement projects.

Additionally, habitat projects related to fencing have been undertaken within the recovery area of Alberta including; marking of approximately 14 km of fencing on conservation properties and MultiSAR ranches, the completion of a fence collision model for Alberta in collaboration with the Sage-grouse Initiative (SGI) and the retrofitting of 8 miles of existing page wire fencing to “wildlife friendly” standards including marking with sage-grouse reflectors.

3.5.1 Effects of Alternative A: No translocation (No Action)

- Direct Effects: No augmentation of Alberta sage-grouse population. Without augmentation, habitat conservation and restoration efforts will be the primary variable resulting in any changes to the sage-grouse population.
- Indirect Effects: There would be no subsequent changes in sage-grouse populations in silver sagebrush habitats north of the Milk River, including those silver sagebrush habitats in Northern Montana. Additionally, knowledge would not be gained as to the feasibility of augmenting sage-grouse in a silver sagebrush environment.

3.5.2 Effects of Alternative B: The Southern Valley and Phillips Counties Sage-grouse Translocation Alternative (Proposed Action)

- Direct Effects: Habitat protection, conservation, restoration, and potential change to operating standards and protocols for future energy development in Alberta will improve the survival of the translocated sage-grouse and overall sage-grouse populations.
- Indirect Effects: There is increased potential for sage-grouse dispersal and migration between Northern Montana and Alberta; as well as maintaining connectivity between the sage-grouse populations. Habitat improvements in Alberta (stated above) will aid in this connectivity between the sage-grouse populations.

3.6 Relevant Resource #4 – Sage-grouse Monitoring and Research effects.

3.6.1 3.6.1 Effects of Alternative A: No translocation (No Action)

- Direct Effects: MFWP resources and field staff as it relates to monitoring sage-grouse populations would not be affected and would continue to focus on Montana's sage-grouse populations.
- Indirect Effects: By not translocating sage-grouse, knowledge would not be gained regarding the success of translocation protocols, captures, survivorship etc. especially as it relates to potential translocation in Montana and elsewhere.

3.6.2 Effects of Alternative B: The Southern Valley and Phillips Counties Sage-grouse Translocation Alternative (Proposed Action)

- Direct Effects: MFWP resources and field staff would need to be redirected from monitoring sage-grouse populations in Region 6, to complete the translocation. A minimum number of leks would still need to be completed to monitor sage-grouse population trends (Valley County block survey) and address management plans (AHM leks) in Region 6. MFWP staff would continue coordination efforts with Alberta-based staff to monitor the health and population of the translocated grouse.
- Indirect Effects: Knowledge would be gained regarding the feasibility of translocating sage-grouse in silver sagebrush habitats, success of translocation protocols, captures, survivorship etc. especially as it relates to potential translocation in Montana and

elsewhere. Field staff would gain valuable experience in bird capture and handling that will be useful for future management of sage-grouse in Montana. Collaborative ties would be strengthened between jurisdictional staff.

3.7 Cumulative Impacts

Several environmental and human factors influence sage-grouse populations and their habitat. The northern Montana source population is annually influenced by factors including regulated hunter harvest, natural predation, West Nile virus, and annual weather fluctuations. Despite these factors, sage-grouse populations have remained stable on the source area, largely due to the maintenance of large expanses of sagebrush habitat and the resiliency of sage-grouse populations. The impact of removing up to 40 sage-grouse is minor in comparison to the above annual factors that can influence population changes and would likely have negligible impacts to Montana's overall sage-grouse population levels.

4 Chapter 4.0: Resource issues considered but eliminated from detailed analysis.

The Montana Environmental Policy Act (MEPA) provides for the identification and elimination from detailed study of issues, which are not significant or which have been covered by a prior environmental review, narrowing the discussion of these issues to a brief presentation of why they will not have a significant effect on the physical or human environment or providing a reference to their coverage elsewhere (ARM 12.2.434(d)). While these resources are important, they were either unaffected or mildly affected by the proposed action, or the affects could be adequately mitigated.

4.1 Vegetation and soils

Capture methods require the use of four-wheel drive vehicles and all-terrain vehicles to access sage-grouse leks and at times capture sage-grouse. Due to the timing of the capture in April during the non-growing season, minimal vegetation impacts are expected. In areas where topography, soils, and/or vegetation prevent vehicle access, walking methods will be used.

4.2 Recreational Resources

Removal of up to 40 sage-grouse biennially is not expected to have negative effects on hunting opportunities or limit recreational viewing in Region 6. The effects of removing this number of sage-grouse is negligible to the population when compared to annually occurring events in Region 6 such as; regulated hunter harvest, natural predation, West Nile virus, and annual weather fluctuations.

5 Chapter 5.0: Determination If an Environmental Impact Statement is Required

Based on the above assessment, which has not identified any significant negative impacts by the proposed action to Montana's sage-grouse population, *an EIS is not required* and an EA is the appropriate level of review. The overall impact from the successful completion of the proposed action would provide long-term benefits to both the physical and human environment.

6 Chapter 6.0: Public Participation and Collaborators

6.1 Public Involvement

For this EA the public will be notified in the following manners to comment on this EA, the proposed action and alternatives:

- One statewide press release;
- Direct mailings of cover letter and preface to the Fish and Wildlife Commission, and a list of stakeholders comprised of individuals and agencies that may have a particular interest in this proposal.
- Public notice on the Fish, Wildlife & Parks web page:
<http://fwp.mt.gov>

Copies will be available for public review at FWP Region 6 Headquarters in Glasgow.

The public comment period will extend for (30) thirty days. Written comments will be accepted until 5:00 p.m. on December 11, 2015 and can be mailed to the address below:

Montana Fish, Wildlife & Parks
Attn: Sage-grouse Translocation
1 Airport Road Glasgow, MT 59230

Or comments can be emailed to katsmith@mt.gov.

6.2 Collaborators and scoping

The recent formation of several memorandums of understanding (MOU's) to facilitate inter-agency cooperation and coordination for wildlife and landscape management has signified greater regional, ecosystem-based management in Western North America.

While state and provincial agencies maintain ultimate authority over their wildlife resources, recognition is growing that western ecosystems and their species, along with the pressures threatening them, regularly transcend jurisdictional boundaries. As such, management of these species and systems requires substantial collaboration to yield meaningful results. In 2008 the Western Association of Fish and Wildlife Agencies (WAFWA) endorsed a MOU signed by all state/provincial agencies and key federal land management and conservation agencies active in greater sage-grouse (*Centrocercus urophasianus*) conservation. A second western state/province based initiative was formed in 2007 under the Western Governors' Association targeted at maintaining key habitats and corridors. At a regional level, the Northern Sagebrush Steppe Initiative was endorsed by WAFWA in 2007 as a response to regional pressures and shared wildlife resources in the Alberta, Montana, and Saskatchewan border region. This MOU was renewed in 2012 by all applicable jurisdictions. In particular these efforts have been focused on maintaining and in some cases increasing current species distributions and populations by conserving and restoring key habitats, including the greater sage-grouse.

Although this project is to be led by MFWP and AEP, the project will consult with local members of the communities, interest groups, and agencies through the environmental assessment process, to incorporate comments, issues, and suggestions to the project proposal. Other involved agencies may include, but not be limited to BLM, DNRC, USFWS, US Customs and Border Protection.

- 1) The translocation was presented to the Region 6 sage-grouse working group on November 4, 2010 prior to the first sage grouse translocation in 2011 and 2012. Comments from that meeting were incorporated into this EA. Present were representatives from the Bureau of Land Management (BLM), Natural Resources Conservation Service (NRCS), Montana Department and Natural Resources and Conservation (DNRC), and Ranchers Stewardship Alliance (RSA).
- 2) Through the development of this draft EA, MFWP and AEP staff were included as reviewers.

6.3 Anticipated Timeline

Public Comment Period on EA: November 12, 2015 – December 11, 2015

Decision Notice Published: December 31, 2015

Fish and Wildlife Commission Final Decision: January 14, 2016

Proposed translocation of sage-grouse to Alberta to begin: April 2016

7 Chapter 7.0: EA Preparer(s)

Scott Thompson
Montana Fish Wildlife & Parks
Wildlife Biologist
Malta, MT 59538

Todd Whiklo
Alberta Environment and Parks
Sage-grouse Recovery Biologist
Medicine Hat, AB T1A 0G7

LITERATURE CITED

- Alberta Sage-grouse Recovery Team. 2013. Alberta greater sage-grouse recovery plan 2013-2018. Alberta Sustainable Resource Development, Fish and Wildlife Division, Alberta Species at Risk Recovery Plan No. 30. Edmonton, AB. 46 pp.
- Alberta Wildlife Management Division. 1996. The status of Alberta wildlife. Alberta Environmental Protection, Natural Resource Service, Wildlife Management Division. Edmonton, AB. 42pp.
- Aldridge, C.L. 2002. Sage-grouse nesting and brood habitat use in southern Canada. *Journal of Wildlife Management*, 66(2): 433-444.
- Aldridge, C.L., M.S. Boyce. 2007. Linking occurrence and fitness to persistence: habitat based approach for endangered greater sage-grouse. *Ecological Applications*, 17(2): 508-526.
- Aldridge, C.L., R.M. Brigham. 2001. Nesting and reproductive activities of greater sage-grouse in a declining northern fringe population. *The Condor*, 103: 537-543.
- Aldridge, C.L., R.M. Brigham. 2003. Distribution, abundance, and status of the greater sage-grouse *Centrocercus urophasianus*, in Canada. *Canadian Field-Naturalist*, 117(1):25-34.
- Balderson, K.L, D.H. Eslinger and J.T. Nicholson. 2013. Greater Sage-grouse (*Centrocercus urophasianus*) monitoring in southeast Alberta: 1968-2012. Alberta Environment and Sustainable Resource Development, Fish and Wildlife Division, Alberta Species at Risk Report No. 147, Edmonton, AB. 28 pp.
- Baxter, R.J., J.T. Flinders, D.L. Mitchell. 2008. Survival, movements, reproduction of translocated greater sage-grouse in Strawberry Valley, Utah. *Journal of Wildlife Management*, 72(1): 179-186.

- Beckstrand, J.W., P. Buettner, M. Horney, D. Lancaster, R. Shinn. 2009. Restoration and recovery of greater sage-grouse in the Devil's Garden population management unit, Modoc County, California: Progress report. Devil's Garden/Clear Lake Sage-grouse Working Group. 16pp.
- Braun, C.E. 2002. Estimating Sage-grouse Population Size. Unpublished report. Grouse Inc. Tucson, AZ.
- Bush, K.L., C.K. Dyte, B.J. Moynahan, C.L. Aldridge, H.S. Sauls, A.M. Battazzo, B.L. Walker, K.E. Doherty, J. Tack, J. Carlson, D. Eslinger, J. Nicholson, M.S. Boyce, D.E. Naugle, C.A. Paszkowski, D.W. Coltman. 2011. Population structure and genetic diversity of greater sage-grouse (*Centrocercus urophasianus*) in fragmented landscapes at the northern edge of the range. *Conservation Genetics*. 12:527-542.
- Boarman, W.I., M.A. Pattern, R.J. Camp and S.J. Collis. 2006. Ecology of a population of subsidized predators: Common ravens in the central Mojave Desert, California. *Journal of Arid Environments*. 67:248-261.
- Chapman, G. 2008. Oil and gas well disturbance near sage-grouse leks in southern Alberta. Internal report, Alberta Sustainable Resource Development, Fish and Wildlife Division, Medicine Hat. 9 pp.
- Chernoff, G., B. Stelfox, G. Greenaway. 2008. ALCES®-based habitat simulation modeling for greater sage-grouse in southeastern Alberta. Final report prepared for Alberta Greater Sage-grouse Recovery Team. 28 pp.
- Coates, P.S., J.W. Connelly, D.J. Delehanty. 2008. Predators of greater sage-grouse nests identified by video monitoring. *Journal of Field Ornithology*, 79(4):421-428.
- Coates, P.S., S.J. Stiver, D.J. Delehanty. 2006. Using sharp-tailed grouse movement patterns to guide release-site selection. *Wildlife Society Bulletin*, 34(5):1376-1382.
- Connelly, J.W., C.E. Braun. 1997. Long-term changes in sage-grouse *Centrocercus urophasianus* populations in western North America. *Wildlife Biology*, 3(3/4): 123-128.
- Connelly, J.W., S.T. Knick, M.A. Schroeder, S.J. Stiver. 2004. Conservation assessment of greater sage-grouse and sagebrush habitats. Western Association of Fish and Wildlife Agencies. Unpublished Report. Cheyenne, Wyoming.
- Connelly, J.W., M. A. Schroeder, A.R. Sands, C.E. Braun. 2000. Guidelines to manage sage-grouse populations and their habitats. *Wildlife Society Bulletin*, 28(4): 967-985.

- Doherty, K.E., D.E. Naugle, B.L. Walker, and J.M. Graham. 2008. Greater sage-grouse winter habitat selection and energy development. *Journal of Wildlife Management*, 72: 187-195.
- Downey, B.L., B.A. Downey, R.W. Quinlan, S.L. Frank, D.E. Cross, D.J. Jarina, C.G. DeMaere, J. Nicholson, P.F. Jones. 2008. MULTISAR: A multi-species conservation strategy for species at risk 2007-2008 report. Alberta Sustainable Resource Development, Fish and Wildlife Division, Alberta Species at Risk Report No. 117, Edmonton, AB. 82p
- Environment Canada. 2014. Amended Recovery Strategy for the Greater Sage-grouse (*Centrocercus urophasianus*) in Canada. *Species at Risk Act Recovery Strategy Series*. Environment Canada, Ottawa. 53pp.
- Giesen, K.M., T.J. Schoenberg, C.E. Braun. 1982. Methods for trapping sage-grouse in Colorado. *Wildlife Society Bulletin*, 10(3): 224-231.
- Holloran, M.J. 2005. Greater sage-grouse (*Centrocercus urophasianus*) population response to gas field development in western Wyoming. Ph.D. Thesis, University of Wyoming, Laramie, USA.
- IUCN. 1998. Guidelines for re-introductions. Prepared by the IUCN/SSC Re-introduction Specialist Group. IUCN, Gland, Switzerland and Cambridge, UK. 10pp.
- Kaiser, R.C. 2006. Recruitment by greater sage-grouse in association with natural gas development in western Wyoming. Thesis, University of Wyoming, Laramie, USA.
- Kiesecker, J.M., H. Copeland, A. Pocewicz, and B. McKenney. 2010. Development by design: blending landscape-level planning with the mitigation hierarchy. *Frontiers in Ecology and the Environment* 8: 261–266.
- Lungle, K., S. Pruss. 2008. Recovery strategy for the greater sage-grouse (*Centrocercus urophasianus urophasianus*) in Canada. *In Species at Risk Act Recovery Strategy Series*. Parks Canada Agency. Ottawa. vii + 43 pp.
- Mequida, E.T., S.J. Slater, C.W. Benkman. 2006. Sage-grouse and indirect interactions: potential implications of coyote control on sage-grouse populations. *The Condor*, 108: 747-759.
- Michener, G.R., 2005. Limits on egg predation by Richardson's ground squirrels. *Canadian Journal of Zoology*, 83: 1030-1037.
- Management Plan and Conservation Strategies for Sage-grouse in Montana-Final. 2005. Montana Department of Fish and Game, Wildlife Division. 37pp.

- Montana Sage Grouse Working Group. 2005. Management Plan and Conservation Strategies for Sage Grouse in Montana-Final. 131p
- Moynahan, B.J., M.S. Lindberg, J.W. Thomas. 2006. Factors contributing to process variance in annual survival of female greater sage-grouse in Montana. *Ecological Applications*, 16(4):1529-1538.
- Moynahan B.J. 2004 Landscape-scale Factors Affecting Population Dynamics of Greater Sage-Grouse (*Centrocercus urophasianus*) in North-Central Montana, 2001-2004. Ph.D. thesis. University of Montana, Missoula.
- Musil, D.D., J.W. Connelly, K.P. Reese. 1993. Movements, survival, and reproduction of sage-grouse translocated into central Idaho. *Jour of Wild Manage*, 57(1): 85-91.
- Naugle, D.E., C.L. Aldridge, B.L. Walker, T.E. Cornish, B.J. Moynahan, M. J. Holloran, K. Brown, G.D. Johnson, E.T. Schmidtman, R.T. Mayer, C.Y. Kato, M.R. Matchett, T. J. Christiansen, W.E. Cook, T. Creekmore, R.D. Falise, E.T. Rinkes, M. S. Boyce. 2004. West Nile virus: pending crisis for greater sage-grouse. *Ecology Letters*, 7: 704–713.
- Naugle, D.E., K.E. Doherty, B.L. Walker, M.J. Holloran and H.E. Copeland. 2011. Energy development and Greater Sage-grouse. Pp. 489-503 *in* S.T. Knick and J.W. Connelly (eds). *Greater Sage-grouse: ecology and conservation of a landscape species and its habitats*. Studies in Avian Biology (vol. 38), University of California Press, Berkeley, CA.
- Oyler-McCance, S.J., S.E. Taylor, T.W. Quinn. 2005. A multilocus population genetic survey of the greater sage-grouse across their range. *Molecular Ecology*, 14: 1293–1310.
- Pruett, C.L., M.A. Patten, D.H. Wolfe. 2009. Avoidance behaviour by prairie grouse: implications for development of wind energy. *Conservation Biology*, 23(5):1253-1259.
- Reese, K.P., J.W. Connelly. 1997. Translocation of sage-grouse *Centrocercus urophasianus* in North America. *Wildlife Biology*, 3(3/4): 235-241.
- Schroeder, M.A., C.L. Aldridge, D.A. Apa, J.R. Bohne, C.E. Braun, S.D. Bunnell, J.W. Connelly, P.A. Deibert, S.C. Gardner, M.A. Hilliard, G.D. Kobriger, S.M. McAdam, C.W. McCarthy, J.J. McCarthy, D.L. Mitchell, E.V. Rickerson, S.J. Stiver. 2004. Distribution of sage-grouse in North America. *The Condor*, 106: 363–376.
- Schroeder, M.A., C. Hagen, J. Connelly, S. Espinosa, J. Kobriger. 2006. Guidelines for translocation of prairie grouse. Draft, July 6, 2006. Western Agencies Sage- and Columbian Sharp-tailed Grouse Technical Committee. 16pp.

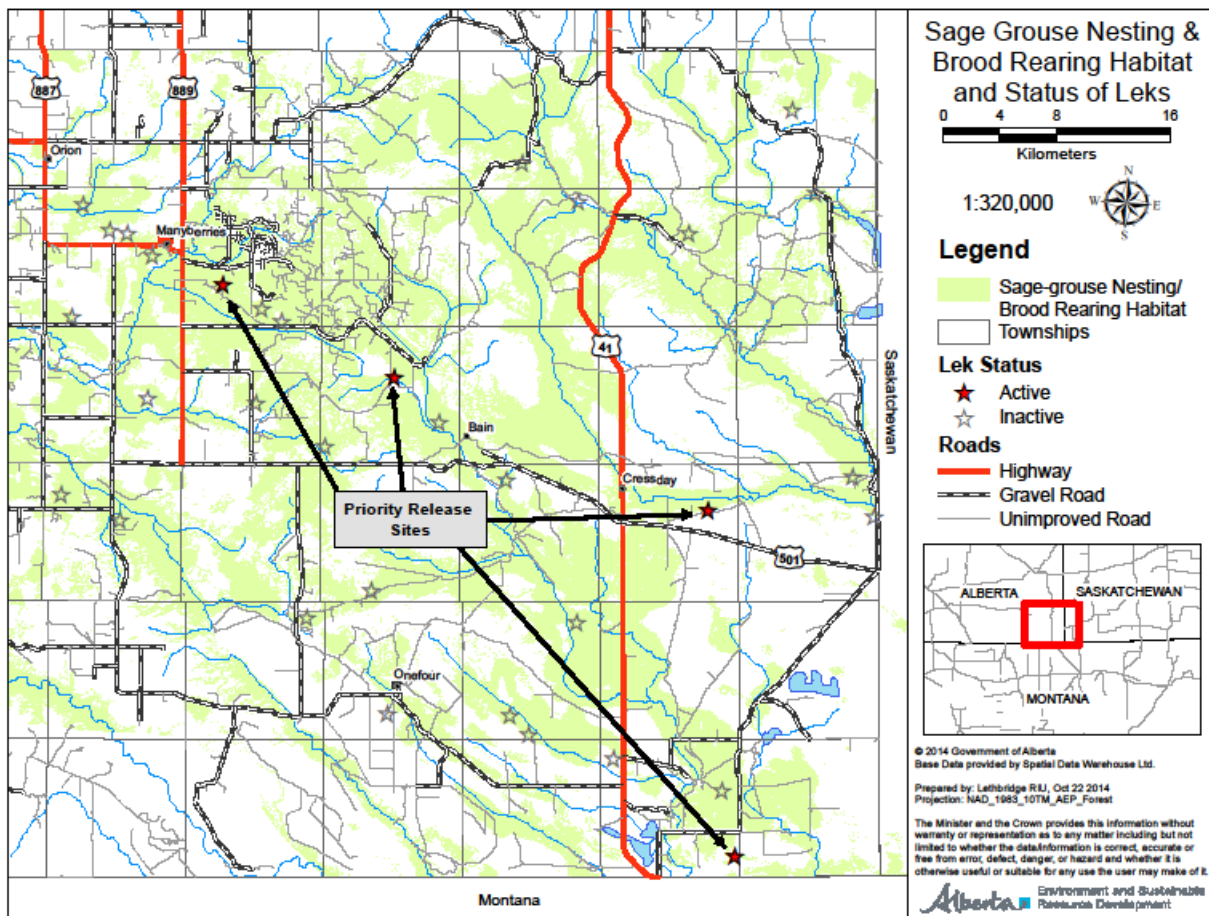
- Schroeder, M.A., D. Hays, H. Ferguson, T. Owens, M. Livingston, M. Vander Haegen, K. Warheit, D. Stinson. 2007a. Re-introduction of greater sage-grouse to Lincoln County, Washington: Project proposal. Washington Department of Fish and Wildlife, Olympia, Washington. 20pp.
- Tack, Jason. 2009. Sage-Grouse and the Human Footprint: Implications for Conservation of Small and Declining Populations. M.Sc. Thesis. University of Montana, Missoula.
- Wallestad, R. 1975. Life history and habitat requirements of sage-grouse in central Montana. Montana Department of Fish and Game, Game Management Division. 66pp.
- Western Association of Fish and Wildlife Agencies. 2000. Memorandum of Understanding among Western Association of Fish and Wildlife Agencies; U.S. Department of Agriculture, Forest Service; U.S. Department of The Interior, Bureau Of Land Management; U.S. Department of The Interior, Fish And Wildlife Service.
- Western Governors' Association. 2007. Protecting wildlife migration corridors and crucial wildlife habitat in the West. Policy Resolution 07-01.
- Western Wildlife Habitat Council. 2008. Western Governors' Association wildlife corridors report. The Western Governors' Association, Jackson, Wyoming.
- Whiklo, T. and J. Nicholson. 2014. Translocation of Greater Sage-grouse from Montana to Alberta: 2011-2013 progress report. Alberta Environment and Sustainable Resource Development. Edmonton, AB. 21 pp.

Appendices

Appendix 1 - Table summarizing past, current, and projected threats to sage-grouse in Alberta, including whether management actions can mitigate the threat.

Threat	Historical Decline Factor	Current Decline Factor	Impediment to Recovery	Threat to Translocated Birds	Possible to Mitigate	Explanation
Conversion to cropland	Yes	No	~	No	Yes	Possibly the greatest contributor to historical declines although limited in scope in the immediate recovery area. Conversions in northern Montana remain a concern to full recovery as population isolation and thus decreased immigration and genetic flow are likely to occur. Efforts should be made to retain remnant native range corridors.
Water Impediments	~	~	No	No	Yes	Techniques to slow runoff have decreased the health of silver sage communities. In areas of targeted restoration it will be technically feasible to address this issue.
Natural disturbances	Yes	Yes	No	Yes	~	Severe weather events (e.g. hail storms, flooding) and cyclical climatic patterns (e.g. drought) can have detrimental effects on populations. Although difficult to manage for catastrophic events, sound range management can buffer the effects of some of these events.
Industrial Activity	~	Yes	~	~	Yes	Oil and gas, wind, and powerline exploration and development create linear disturbances reducing the effectiveness and creating mortality sinks of once source habitat. Current estimates suggest the footprint of oil and gas development has reached a peak. Restoration efforts beginning immediately will be phased in focusing on critical habitats adjacent to recovery leks followed by secondary habitats, and expansion habitat.
Grazing Regime	~	No	No	No	Yes	Current strategies encourage late seral-stage communities favoring residual cover and high litter content. Directed grazing practices could be used to improve sage-grouse habitats by increasing patchiness in some areas.
Predators	~	~	~	~	Yes	Although usually not a directed predator of sage-grouse, coyotes will incidentally predate on adults, juveniles, and nests. Other meso-predators may also impact populations by preying on nests. Predator control has been a part of other reintroduction efforts. Although not currently part of this program, predation will be monitored and results fed into an adaptive management approach.
Pesticides	No	No	No	No	Yes	Pesticide use does not appear to impact this sage-grouse population as their use is minimal in the recovery area.
Recreational Activity	No	No	No	No	Yes	Recreational viewing of active leks when done incorrectly has the potential to cause abandonment of leks. Currently a moratorium on viewing in Alberta has dealt with this issue. Once recovered to goals listed in the recovery plan, viewing opportunities will again be allowed with proper management.
Disease	~	Yes	Yes	Yes	~	West Nile virus has had serious impacts on the recovery area, decreasing female late summer survival by ~25% in one season. Although considered a major threat to this and all sage-grouse populations, some sero-prevalence has been noted.
Other disturbances	No	No	No	No	Yes	Other anthropogenic effects such as the spread of weeds and vehicle strikes may have some impact on the population although this is expected to be minor. Reclamation of access routes in sage-grouse range should increase the effectiveness of habitats.

Appendix 2 – Map of sage-grouse leks in Alberta to focus augmentation efforts



Appendix 3 - Capture and handling protocols

Spotlight protocol

1. Use some form of white noise.
2. When approaching a bird on an ATV, drive directly to it, and then begin to veer away as you get within approximately 15 feet.
3. Work to do a drive-by and position the bird about 6 feet off the side of the ATV.
4. Trap the bird using hoop net or net gun. Focus on hens when possible.
5. Place sage-grouse in box for transport.
6. Fill out form attached to each box including the capture date and time in military (24-hour) format, sex, generic description of locations, GPS location in UTM, and capture crew.
7. Transport back to central processing facility.

Processing steps at central location

1. In a crew of two, one person will hold the bird (the “handler”) and the other will process the bird and fill out the data sheet (the “processor”). Continual communication between the handler and the processor is essential, and will ensure a brief and safe handling time. As you get familiar with the processing steps, communicate with each other to plan for the next step in the process.
2. Birds tend to stay much calmer and struggle less when the legs are secured or supported. The best way to do this is to hold both legs in one hand and hold them back toward the tail. Alternatively you can hold the bird so both legs are in contact with your knee.
3. Follow disease and parasite testing protocols including examination by appropriately certified personnel.
4. Apply the radio transmitter and record the frequency once successfully fitted. The transmitter attachment will follow methods laid out in Bedrosian and Craighead (2010).
5. Apply the metal leg band to the left leg. Males get a large leg band, females get the smaller band. Each band has its own particular applicator pliers. Two squeezes with the pliers are necessary for optimal band closure. First, close the band tightly with the seam of the band aligned with the seam of the pliers when closed. For the second squeeze, turn the band so that the seam is 90° from the seam of the pliers when closed. Squeeze hard and the band should have a tight butt-end seam. If the band is stuck in the pliers, pull free using your fingers. Record the metal band number.
6. Record the sex of the bird. If uncertain, examine the undertail coverts. Males have black feathers with white tips, and have a clean break between black and white. Females have similar black feathers with white tips, but will have white streaking along the feather shaft.

7. Record the age of the bird. Examination of the 9th and 10th primaries is the best way to do this. Juvenile primaries will be pointed and often frayed on the trailing edge. Adult's primaries will be much more rounded and smooth.
8. Record the weight in kilograms. To weigh, the handler should rotate the bird so it is head-down, and the handler should expose the left leg with the metal leg band for the processor. The processor signals when he/she has a firm grip on the scale, and the handler signals when the bird is hanging completely free. The processor signals when an accurate weight reading is taken, and holds the scale until the handler has regained control of the bird.
9. Measure tarsus length: using the digital caliper, record the length of the tarsus in millimeters from the front of the "ankle" to the rear of the "elbow." Make sure the foot is fully flexed downward before measuring.
10. Measure head length: hold the head of the bird by the tip of the bill. Open the caliper wide, and place first at the back of the head, directly in the center. Close the caliper until it just touches the tip of the bill. Record length in millimeters.
11. Take a feather sample. If feathers are lost during handling and you are certain that those feathers are from the bird in hand, use several for the sample. Otherwise, grab and pluck 2-3 downy feathers from underneath one wing. Open a new paper envelop and place feather inside. Only one person should touch the feathers, and should have as little contact as possible. With a marker, write on the bag the bird's identity number (metal band number) and the capture date in MM/DD/YY format.
12. Record the time in military format once completed.
13. Throughout the process record the initials of all crew involved in trapping and processing.
14. Record any notes on the condition of the bird, injuries, barb separation, flight irregularities, etc.
15. Place sage-grouse back into box and place in appropriate area for transport.

Literature Cited

Bedrosian, B. and D. Craighead. 2010. Solar powered GPS transmitter use on Sage-grouse: Methods of attachment, influences on survival and success rates of the transmitters. Unpublished report.

Appendix 4 – Disease and parasite concerns and testing

Dr. Mark Ball
Wildlife Disease Specialist
Alberta Animal Care Committee Chair
Provincial Wildlife Disease Unit
Fish and Wildlife Division
Alberta Environment and Parks

Greater sage-grouse (SAGR) are host to a number of diseases and parasites, many of which are ubiquitous throughout its distribution. West Nile Virus (WNV) is widely considered to be a significant threat to SAGR populations. SAGR are highly susceptible to WNV, and data suggests SAGR may not develop immunity to the virus (Naugle *et al.* 2005). The inability to find WNV antibodies implies that the virus likely kills all infected SAGR (Naugle *et al.* 2005). Outbreaks of WNV are highly dependent on mosquito (*Culiseta tarsalis*) production which is influenced by variations in summer weather conditions. As a result, the impact of WNV on SAGR populations can change from year to year and should be followed closely.

WNV is endemic to southern Alberta, and the Alberta SAGR recovery plans will be proactive in reducing the impact of this virus. This will include establishing new populations at times outside of the infectivity period of WNV (start of July until the end of September) the proactive long term monitoring of new populations and where necessary implementing mosquito control in areas proximate to new lek(s). Our SAGR recovery plan will also perform serology on all captured birds augmenting the current data set regarding WNV immunity in SAGR.

Other parasites and diseases commonly harboured by greater sage-grouse are known to pose a minimal threat at the population level. However, as with most diseases or parasitic infections, these agents may have a considerable role in reducing local, sub population densities. Higher densities of infected sage-grouse may facilitate increased individual parasitic loads, influencing individual morbidity/mortality toward a balance between host density and tolerable parasitic loads. It is also important to be aware of the pathogenicity of any disease agent carried by SAGR to other species sharing habitat. With this in mind, disease and parasite testing of SAGR used for this recovery plan will be administered within this context. Given the lack of information regarding diseases and parasites of SAGR between both the capture and introduction areas, this data will provide a valuable baseline, enhancing SAGR recovery efforts.

Several parasitic/disease agents are of particular importance to the success of the Alberta Greater Sage-grouse Recovery Program which will be screened for prior to bird translocation. These agents have been chosen due to their potential to increase morbidity/mortality in both domestic and wild game poultry.

Eimeria angusta (Protozoan)

- *Eimeria angusta* is suggested as being ubiquitous throughout known SAGR habitat (Thorne *et al.* 1982). However, outbreaks caused by concentrations of infected birds near water sites during summer has been known to decimate SAGR populations in several localities; 400 of 2000 sage-grouse died of it in Fremont Co. Wyoming (Wallestad 1975, Simon 1940). With this in mind, screening for this parasite prior to reintroduction and removing/treating infected birds may lessen or remove the potential impact of this parasite to local populations.

Leucocytozoon (Protozoan)

- *Leucocytozoon* sp., are transmitted to birds via biting black flies. The majority of birds affected with leucocytozoonosis exhibit no clinical signs. Those that are visibly affected show mild to severe signs of anorexia, ataxia, weakness, anemia, emaciation, and have difficulty breathing. Birds may die acutely or experience chronic disease due to rupturing of the developing parasite in different organs (e.g. liver, brain). It is believed that the mortality in adult birds occurs as a result of debilitation and increased susceptibility to a secondary infection.

Plasmodium pediocetti (Protozoan)

- Commonly known as Avian Malaria, this parasite has been correlated with low reproductive success for infected males (Johnson and Boyce, 1991). *P. pediocetti* causes the eruption of erythrocytes in infected birds. In male birds, this constitutes a morbid behavior in male birds, disrupting courtship displays and likely reducing the chances of preferential selection by hens.

Avian Influenza (Virus)

- Many strains of avian influenza viruses occur naturally in wild birds. Some of these strains can be spread to domestic birds (poultry in particular, especially ducks, chickens and turkeys). Given the risk of this disease to both wild and domestic bird populations all birds translocated into Alberta will be tested for this disease as part of the National Avian Influenza Surveillance Program.

Chewing Lice

- There are numerous species of chewing lice that may adversely affect SAGR. Under heavy infestations, these parasites will eat skin and feathers, and hematomas created by lice on the air sacs may impede the reproductive success of males (Boyce, 1990). These parasites have a wide distribution and are likely to be ubiquitous through the SAGR range.

To address these concerns, the Alberta Greater Sage-grouse recovery strategy will initiate physical examination and disease testing on all captured birds to be translocated. Any individuals showing signs consistent with possible infectious disease will not be moved. Furthermore, any bird testing positive for any of the before mentioned parasites will not be moved unless an appropriate treatment can be administered to remove or reduce the parasite load of the individual.

Physical Examination:

Each individual will be weighed at the time of processing and sample collection. Physical examination and external health check will be performed by a certified, licensed veterinarian on all birds including those not sampled. Any birds with abnormalities consistent with possible infectious disease (unexplained poor body condition, evidence of chronic diarrhea, ocular, oral or nasal discharge, sneezing, unexplained lesions or growths) should not be released but, should be held and submitted to a wildlife disease diagnostic lab for complete necropsy. Ideally birds should be submitted to the diagnostic facility alive. If this is not possible we will collect blood and Avian Influenza samples from the birds prior to euthanasia.

Disease and Parasite sampling:

Disease sampling conducted during the 2011-12 translocations were as follows:

Fecal

Collect feces from a single individual per tube or small whirl-pak® Bag - submit to participating diagnostic laboratory for parasitological examination

Blood Samples

Blood samples should be collected by a certified veterinarian or someone with extensive experience with the procedure.

- Collect 2 ml of blood in small glass red top tube bullet tube if you collect 1 ml or less blood.
- Place tube on its side for 4 hours at room temperature.
- When clot begins to retract, place the tube upright and put in fridge or spin and separate serum.
- Deliver to the participating diagnostic laboratory same day or place in fridge overnight.

Avian Influenza Tests:

To collect cloacal swab samples for Avian Influenza testing, hold the bird's head down in a nearly vertical position with wings and feet contained. The bird's ventrum should face the person swabbing. Locate and grasp tail feathers at the base and reflect away from you to locate cloaca. Remove swab from package and insert tip into cloacal orifice (1cm). Rotate swab tip against cloacal lining two or three times. Remove swab, shake off excess fecal material, and place directly into liquid transport media. With the swab in the media, swirl the stem end of the swab between fingers vigorously, and leave the

swab in the tube. When all swabs are in the media, slowly turn and pull all swabs out of the tube at the same time, causing the contents to be expressed into the tube.

Alteration of Disease Testing for Subsequent Translocations

Results from the initial translocations of 2011-12 provided clear direction regarding disease sampling and testing. All sampled sage-grouse tested negative for Avian Influenza, West Nile virus, Newcastle Disease virus, Salmonella and fecal parasites. All sampled sage-grouse tested positive for Mycoplasma. As Avian Influenza is the only disease that poses a risk to public health, AEP will continue this testing via cloacal swab. Fecal samples will also be collected opportunistically and testing will be performed on those samples. Genetic data collection will continue and all captured sage-grouse will be sampled, however, genetic information will be sampled via feather collection to reduce stress on the birds.

A concern expressed by AEP staff involved in the 2011-12 translocations was the level of stress the birds encountered, particularly through blood sampling. AEP will not conduct further blood sampling of translocated sage-grouse, unless all other means of sampling have been exhausted.

Literature

Boyce, M.S. 1990. The red queen visits sage-grouse leks. *Amer. Zool.* 30:23-270

Johnson L.L. and Boyce, M.S. 1991 Female choice of males with low parasite loads in sage-grouse. *Bird-Parasite Interactions*, Oxford University Press., Oxford p. 377–388.

Naugle, D.E., Aldridge C.L., Walker B.L., Doherty K.E., Matchett M.R., McIntosh J., Cornish T.E. and Boyce M.S. 2005. "West Nile virus and sage-grouse: What more have we learned?" *Wildlife Society Bulletin* 33: 616-623.

Simon, F. 1940. The parasites of sage-grouse (*Centrocercus urophasianus*). *Univ. Wyoming Publ.* 7(5):77-100

Wallestad, R. 1975. Life history and habitat requirements of sage-grouse in central Montana. *Montana Dept. Fish and Game, Game Manage. Div.* 66pp

Appendix 5 - State, provincial and federal regulatory requirements for translocating sage-grouse.

Dr. Mark Ball
Wildlife Disease Specialist
Alberta Animal Care Committee Chair
Provincial Wildlife Disease Unit
Fish and Wildlife Division
Alberta Environment and Parks

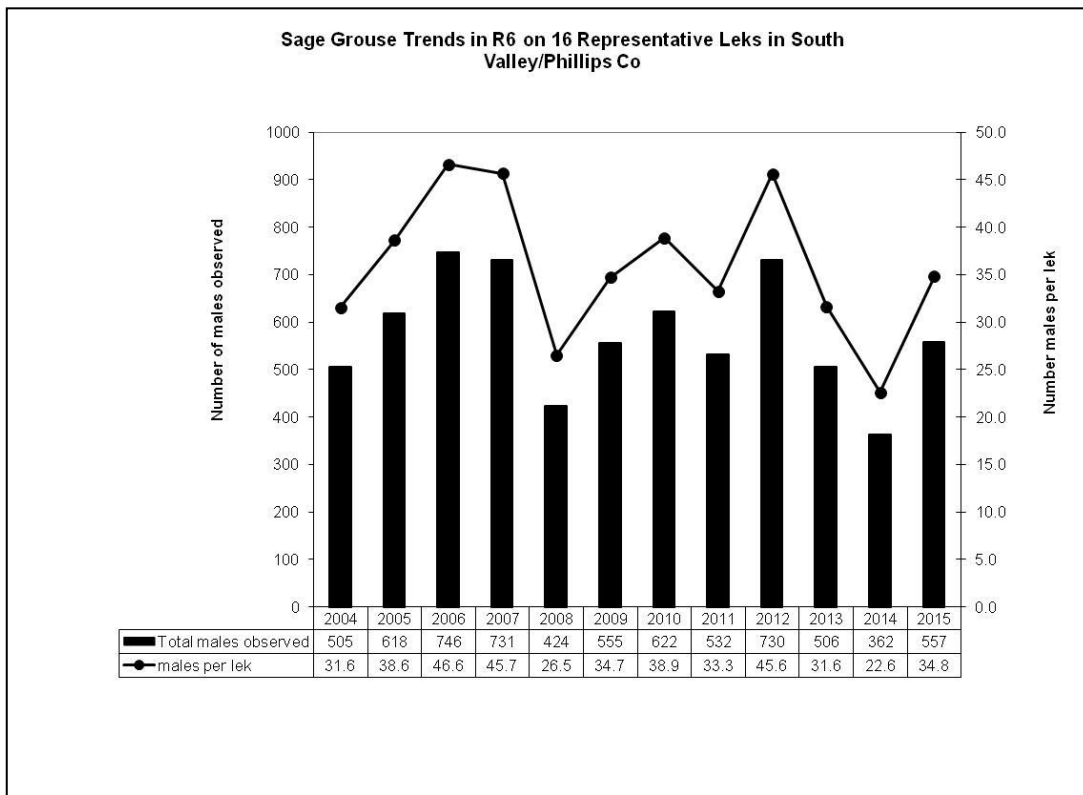
The Canadian Food Inspection Agency (CFIA) requires that an import permit be obtained for the importation of any live animal, including Greater sage-grouse, from the U.S. This import permit can be obtained by submitting application c5083 to Craig Sellars, Import/Export Coordinator (CFIA), fax 403-292-6629. This application should be submitted approximately 4 months prior to the planned import of greater sage-grouse into Alberta. Imported sage-grouse into Canada must be accompanied by a U.S. Origin Health Certificate (VS Form 17-6). For sage-grouse translocation to the Alberta Recovery Area, disease testing as indicated on this form has been granted an exemption (Craig Sellars personal communication via email). All translocated sage-grouse must be identified using leg bands. Both a research permit and an import permit will be obtained from the province of Alberta. Dr. Mark Ball will provide the research permit and an import permit from District Wildlife Officer Doug Etherington out of the Medicine Hat office will be obtained. No permits will be required from the Canadian Wildlife Service as sage-grouse will not occupy any federal lands in Canada prior to release.

MONTANA, U.S.

Scientific Collector's Permit: Montana Fish Wildlife & Parks requires a scientific collector's permit for all activities related to animal capture and handling, wildlife rehabilitation, bird banding, educational display, wildlife relocation or carcass salvage. In order to acquire the permit by April 1, the permit should be applied for by the end of December 2015.

Research projects that require capture and/or handling of wild animals must comply with the Animal Welfare Act 1966 and its amendments 1970, 1976, 1985, and 1990. An approval of animal capture, handling and care protocols must be provided from an approved Institutional Animal Care and Use Committee (IACUC). Applicants can apply for a review by the MT FWP IACUC committee if one is not available through other means. Capture or handling activities must not begin until an official review has been completed. More information about an MT FWP IACUC review can be found on the FWP website <http://fwp.mt.gov/doingBusiness/licenses/wildlifeCollector.html> or by contacting MT FWP Veterinarian, Jennifer Ramsey at jramsey@mt.gov.

Appendix 6 – Sage-grouse population trend for proposed source lek complexes to be used in future translocations.



Sage-grouse leks with consistent monitoring effort (2004-2015) will be used to determine sage-grouse long term average in South Valley/Phillips County. These leks include; SG11-07, SG11-10, SG11-11, SG11-13, SG11-14, SG11-29, SG11-30, SG11-33, SG20-001, SG20-004, SG20-009, SG20-037, SG20-042, SG20-044, SG20-069 and SG20-070. A drop below 45% of the long term average would trigger the postponement of subsequent translocations.

SAGE GROUSE TRANSLOCATION FROM MONTANA TO ALBERTA

ENVIRONMENTAL ASSESSMENT

DECISION NOTICE

Montana Fish, Wildlife & Parks

December 31, 2015

Background

On November 12, 2015, Montana Fish, Wildlife & Parks (MFWP) distributed a Draft Environmental Assessment (EA) on a proposed action for translocation of 40 sage grouse biennially (totaling up to 120 sage grouse) over a five year period between 2016-2020 from MFWP Administrative Region 6 to the Province of Alberta Canada. The Fish and Wildlife Commission (the Commission) at the November 12, 2015, Commission Meeting in Helena endorsed MFWP moving forward with the EA process and if warranted through the process, return to the Commission with a final recommendation for approval of this action.

Description of the Proposed Action

MFWP, in coordination with Alberta Environment and Parks (AEP), propose a translocation of sage grouse from within MFWP Administrative Region 6 in northeast Montana to suitable habitat in the southeastern portion of Alberta, Canada. Sage grouse have been declining in Alberta for many years and the population is now estimated to be approximately 100 birds. Sage grouse are classified as an endangered species in Canada. This translocation is a population augmentation to maintain a resident population of sage grouse in Alberta.

Currently, Montana considers sage grouse as both a Species of Concern and an upland game bird having stable populations. Furthermore, the US Fish and Wildlife Service recently determined sage grouse do not warrant listing due to core population numbers and ongoing conservation measures. High quality sagebrush habitat scattered throughout Montana's core sage grouse habitat is the primary reason for a sustainable sage grouse population in Montana. One of these core populations occurs in the proposed source area for the translocations between the Missouri River and the Milk River in MFWP Administrative Region 6.

Sage grouse populations occurring north of the Milk River in predominantly silver sagebrush habitats remain at lower densities than those populations south of the Milk River. Many areas north of the Milk River have also experienced a reduction from historic distributions, including areas south of the Alberta and Saskatchewan boundaries. Some of these areas may still facilitate dispersal into or exchanges with Canadian populations, although it is likely that such movements have been greatly

reduced by reduced connectivity of sagebrush habitat. Small sub-populations in this region may be dependent on connectivity with larger core populations.

Within the South Valley and Phillip County area, six sage grouse lek complexes have been identified. The Beaver Cr. and Dry Fork complexes in Phillips County and the Larb Creek, Bentonite, and Willow Cr. complexes in Valley County are all appropriate capture locations. Captures would initially occur in the spring of 2016, targeting up to 40 sage grouse for translocation. Female yearling sage grouse will be preferred for the translocation.

Once captured, sage grouse will be placed in individual containers and taken to a central location where they will be processed. Logistics will be organized with AEP staff and others to transport sage grouse across the international boundary in a timely fashion. Once at release sites, sage grouse will be released near known locations of resident sage grouse leks in the best protected habitat. MFWP and AEP will monitor and evaluate this translocation from both the perspective of the source leks and the actual birds that are released in Alberta. The costs associated with the translocation will be predominately covered by AEP.

Subsequent translocations with up to 40 sage grouse are scheduled for 2018 and 2020, pending that source populations do not fall below 45% of average. MFWP may also suspend translocations if previously translocated birds are not meeting short term objectives.

Physical, Biological and Human Impacts of Project

Several resource issues relevant to the proposed action to translocate up to 40 sage grouse biennially (up to 120 sage grouse over 5 years) were studied in detail. These include potential effects to the source population in South Valley and Phillips Counties, potential effects to sage grouse populations in silver sagebrush habitat in Alberta, suitability of sage grouse habitat in southeast Alberta, and effects to sage grouse monitoring and research. In all cases, the proposed action will have minor impacts to those relevant issues.

Several issues were considered but were eliminated from detailed analysis because they were not significant. These non-impacted issues include those related to air, water, noise, land use, risk to human health, community impact, aesthetic/recreation and cultural/historical. While these resources are important, they were either unaffected or mildly affected by the proposed action. One exception that is able to be easily mitigated is concerning vegetation and soils. Capture methods require the use of four-wheel drive vehicles and all terrain vehicles during sage grouse capture. Due to the timing of the capture in April, prior to the primary growing season, minimal vegetation impacts are expected. In areas where topography, soils, and or vegetation prevent vehicle access, walking methods will be used.

Cumulative Effects

Several environmental and human factors influence sage grouse populations and their habitat. The Northern Montana source population is annually influenced by regulated hunter harvest, natural predation, West Nile virus, and annual weather fluctuations. Despite these factors, sage grouse populations have remained stable on the source area, largely due to the maintenance of large expanses of sagebrush habitat and the resiliency of sage grouse populations. The impact of removing up to 40 sage grouse biennially is minor in comparison to the above annual factors and has no population level impacts to sage grouse.

Public Comment

MFWP is required by the Montana Environmental Policy Act (MEPA) to assess significant potential impacts of a proposed action to the human and physical environment. In compliance with MEPA, an Environmental Assessment (EA) was completed for the proposed project by MFWP and released for public comment on November 12, 2015.

Public comments on the proposed project were taken for 30 days, ending December 11, 2015. The EA was provided to 44 separate news media outlets including the Montana Associated Press. The EA was also provided to over 26 entities that included state agencies, agricultural groups, County Commissioners, Montana Legislators, NGO's, federal agencies and individuals. Lastly, the EA was posted on the FWP webpage: <http://fwp.mt.gov/news/publicNotices/>.

Nine comments were received on the draft proposal from one state agency, one county farm bureau, one agricultural association and the remaining from interested citizens. Comments were focused on concern of removing birds from Montana, while other issues raised included genetic diversity, relevant plans, disturbance to leks, predator management, transporting disease, habitat conditions in Alberta, FWP resources, and connectivity between populations. The final EA clarifies previous statements or facts to address comments, however no changes have been made to the draft EA or the analysis of potential impacts.

Decision

Based on the analysis within the EA, public comments and internal review, the Draft EA will be adopted as the Final EA. This Decision Notice and the Final EA will serve as the final documents pertaining to this action.

FWP recognizes that there will be no significant impacts on the human and physical environments associated with this project. Therefore, I conclude that an Environmental Assessment is the appropriate level of analysis and that an Environmental Impact Statement is not required.

FWP and AEP have jointly developed this proposal and both desire healthy sage grouse populations that span the 49th parallel. Populations in the trapping area are robust and will not be impacted by the removal of forty grouse biennially. This action serves as an

example of cooperative work between the province of Alberta, Canada and the State of Montana.

In consideration of these facts, I am pleased recommend to the Fish and Wildlife Commission my approval of the translocation of up to forty sage grouse in 2016, 2018 and 2020 into southeastern Alberta, as described in alternative B of the Final EA. The Commission will make a final decision on this recommendation at their January meeting.



December 31, 2015

Ken McDonald
Wildlife Division Administer

Summary of Public Comments

A 30 day public comment period (November 12, 2015 to December 11, 2015) was provided on the draft environmental assessment (EA) to allow for public review and comment on the adequacy of the EA for the proposed sage grouse translocation.

In conjunction with the public comment period, a news release announcing the availability of the EA was issued on November 13, 2015 from the MFWP Region 6 Headquarters to statewide news media and Montana daily and weekly newspapers, television stations, and radio stations.

During the review process 9 comment letters were received from one state agency, one county farm bureau, one agricultural association and the remaining from interested citizens. Comments within each letter received during the review period are presented below with a response following. When appropriate, responses are presented by major topic to facilitate responses to similar comments.

1. Comments pertaining to sage grouse genetic diversity

Comment #1: "It is important to maintain genetic diversity to the Canadian population."

Response

We agree with this statement. As indicated in Section 2.2.1., the Canadian sub-population of sage grouse is most genetically similar to those found in northern Montana. However, without free movement between these populations genetic isolation can become problematic. Translocations maintain genetic exchange with Alberta, while efforts are made to increase connectivity among the silver sagebrush sub-population of sage grouse.

2. Comments pertaining to the impacts of removing up to 40 sage grouse in 2016, 2018, 2020 totaling up to 120 birds from south Phillips and Valley Counties.

Comment #2: "The removal of 40 grouse from the northern MT population on an annual basis is biologically insignificant to the future stability of MT leks."

Comment #10 & 11: "Do not rob the cushion of birds you have in the Montana population"

Comment #23: "MWGA's membership finds it difficult to comprehend and reconcile how the BLM and other federal agencies justify imposing additional land use restrictions on agricultural operations as part of its revised RMPs in order to protect sage grouse populations in this state when, at the same time, Montana's Fish and Game Department is shipping sage grouse to Canada and claiming that such action won't endanger the species."

Response

MFWP as disagrees with the opinions that the removal of 40 sage grouse will have detrimental affects to sage grouse populations in South Phillips and Valley Counties, Montana.

There is no direct evidence to suggest that removal of 40 sage grouse from leks will have any significant impact on the local population in south Valley and Phillips Counties. Described within the EA in Section 1.2, pg 7, sage grouse populations are largely influenced by the large landscape level habitat availability and habitat conditions, alterations and degradation. Research has shown that habitat loss, fragmentation and degradation are the leading cause of sage grouse declines while various other factors, including regulated hunting and predation, have not been shown to contribute to significant declines in sage grouse populations (Braun 1998, Wambolt 2002). Efforts to protect and maintain large undeveloped tracks of habitat within the sage grouse range is the primary factor in keeping the sage grouse from becoming endangered. The sage grouse leks that will be searched and trapped from will be in areas of Phillips and Valley counties with large, undeveloped, high quality habitats and the sage grouse population within the area where the trapping will take place is considered by MFWP to be stable (Section 3.2.1. pgs 23-24).

As stated in the Draft EA (Section 1.1, pg 6), lek counts, on predetermined monitoring leks (Appendix 6, pg 51) surveyed the prior spring to the capture, will determine whether the translocation will take place for that given year. If those monitoring leks are 45% below average, the capture and translocation will not take place the following year. Furthermore, the capture events will not be concentrated in one certain area, rather spread out across the range on leks that are showing the healthiest numbers. In comparison, the effects of translocating 40 sage grouse per year is negligible to the population when compared to annual mortality occurring across their range due to regulated hunting, natural predation, West Nile virus, and annual weather fluctuations.

3. Comments pertaining to use of sage grouse transplants to bolster other Montana populations rather than to Canada

Comment #3: "So my point is why are the birds being transplanted not only out of county but out of the country? Why can't the birds be reestablished in the county (Stillwater) like they were years ago?"

Comment #13: "I feel there are areas of core habitat within Montana greater sage grouse area that would be better served by a sage grouse translocation than the planned relocation to Alberta."

Comment #17: "Montana Taxpayers need to be reassured that our dollars will not fund other countries efforts to rebuild their wildlife populations."

Response

While transplanting wild animals to bolster other populations in other areas is a practice MFWP uses in wildlife management, MFWP disagrees that it would necessarily be better to transplant these sage grouse to various places in Montana as suggested in the comments.

Sage grouse populations throughout most of Montana have been relatively stable and have not seen the large declines in distribution that have occurred in other parts of the range (Connelly 2004). Areas in Montana that have experienced significant declines in the range of sage grouse are largely due to the loss and fragmentation of sagebrush habitat. The vast majority of remaining sagebrush habitat in Montana is still connected to core source populations and recolonization of suitable habitats can still occur. Therefore departmental augmentation of these habitats has not been necessary. As indicated in the draft EA (section 1.2, page 7), past habitat conversion has reduced the distribution and connectivity of sage grouse subpopulations in the Northern Sagebrush Steppe. The combination of sage grouse numbers below minimum viable size and the increasing isolation of Alberta sage grouse subpopulations are two reasons this translocation has been proposed.

As was mentioned in the draft EA, (Section 2.2.1, pages 11-14) greater sage grouse in Alberta are most closely related to sage grouse in northern Montana. Sage grouse in Alberta, Saskatchewan, and northern Montana have been shown through genetic research (Bush et al 2010) to have been historically connected and are considered one population. Additional research (Smith 2010) has documented seasonal migrations between sage grouse subpopulations in Saskatchewan and subpopulations in Montana as far south as the Missouri River. The genetic and movement data indicate a strong connection between subpopulations in Canada and with those in northern Montana. The loss of sage grouse in Alberta could have negative impacts on the remaining sage grouse subpopulations in the transboundary area with Montana and Saskatchewan. Maintaining healthy numbers of sage grouse in southern Alberta may benefit sage grouse in Montana by ensuring greater genetic diversity and resilience within the larger Northern Sage Steppe sage grouse population.

4. Comments pertaining to missing pertinent plans, agreements, etc...

Comment #4: "Chapter 1, Part 4- Add Governors Executive Orders one and two. Document references 2005 plan. Add DNRC Letter of Authorization to utilize state school trust land for capture"

Comment #25: "Incredibly and inexplicably, Montana's Sage Grouse Conservation Strategy is NOT listed as one of the relevant plans and authorities considered and consulted in the Draft EA. See, page 9, Section 1.4"

Response

Executive orders 10-2014 and 10-2015 are critical plans that primarily pertain to sage grouse habitat conservation and improvement through implementation of the Montana Sage Grouse Habitat Conservation Program. These orders and plan are included in the Final EA (Section 1.4, pg 9). However it should also be noted that MFWP retains the role of species (sage grouse) management as defined in statute (also see Response #5 below), which this translocation falls within.

The DNRC Letter of Authorization is added to Applicable permits, licenses and consultations (Chapter 1.6, pg 10) and will be adhered to if the translocation is approved.

5. Comments pertaining to consultation with the Montana Sage Grouse Oversight Team (MSGOT) and project lead by the Montana Sage Grouse Habitat Conservation Program.

Comment #5: "This transfer proposal should be developed through the State Program with the input by the Montana Sage Grouse Oversight Team. This Transfer is outside the State Program."

Comment #26: "The Draft EA is Inadequate because Montana's Sage Grouse Oversight Team has not been consulted as to the Proposed Management"

Response

MFWP agrees that consultation with MSGOT can strengthen the project but FWP disagrees with the opinion that the MSGOT involvement and/or oversight is required because this is a species management action that falls under FWP responsibility.

Montana state statute (87-2-201) indicates that Montana Fish, Wildlife and Parks, through its citizen commission, shall set the policies for the protection, preservation, management, and propagation of the wildlife, fish, game, furbearers, waterfowl, nongame species, and endangered species of the state and for the fulfillment of all other responsibilities of the department related to fish and wildlife as provided by law;

And shall comply with, adopt policies that comply with, and ensure the department implements in each region the provisions of state wildlife management plans adopted following an environmental review conducted pursuant to Title 75, chapter 1, parts 1 through 3. Therefore, MFWP believes that this translocation proposal and Draft EA process fall within the role of species management, as clarified in statute.

6. Comments pertaining to disturbance of sage grouse on source leks

Comment #6: "FWP repeatedly request that people and bird watchers avoid disturbing SG during the time that they are on leks. However, this sensitive time is exactly when the netting of birds will be done. This is a double standard. Don't disturb the birds."

Comment #15: "capture efforts, spring time is prerogative of EA, will be damaging to any lek or SG that is disturbed during this effort."

Response

Disturbance to sage grouse leks will be minimized by utilizing spotlight and netting individual hens as described in the EA (2.3.2. pg 18). The latter three quarters of the breeding period during the spring breeding time is considered the best time of the year for a successful translocation of sage grouse by reducing the

searching time and disturbances with sage grouse concentrated around leks and increasing the probability that sage grouse will anchor at the release locations. During capture operations, the lek center is often used as a starting point to locate birds; however most of the searching and trapping occurs away from the lek, sometimes up to a mile or more from the actual lek. Trapping takes place during the nighttime while the birds are generally away from the lek and roosting in the surrounding habitats and will not take place on the leks during the sensitive lekking periods of the early morning hours.

MFWP sage grouse monitoring, following the captures in 2011 and 2012, has shown that sage grouse trapping activities and subsequent translocations did not have any negative impacts on the long term lek attendance on individual leks. MFWP has compared trend data on leks that were trapped during the 2011-2012 translocations to the total trend data for Southern Valley and Phillips counties. Trend data for those leks searched or captured on did not differ from other leks, between counties or the AHM leks that are monitored annually following the first translocations. These data have been included in the final EA (Section 3.3.2, pgs 27-28)

7. Comments pertaining to predator management in Alberta and Montana

Comment #7: "Predation in Canada and its potential impact on SG is referenced several times in the document. However, predation is completely avoided as a management consideration in Montana"

Comment #16: "the EA has many paragraphs discussing the reality that avian and terrestrial predation is and should be addressed for SG management."

Response

Predation is not viewed as a major driver of the long term decline of sage grouse in Alberta. However, at current population levels the pressure exerted by predators is limiting recovery efforts in Alberta. As a result, AEP has implemented a comprehensive predator management program for sage grouse (Section 3.2.2, pg 26). This program was developed using data collected from translocated sage grouse in 2011-12. AEP recorded a significant increase in population numbers and nest success following the implementation of the predator management program. AEP plans to continue with the comprehensive predator management program for sage grouse as an important part of the provincial recovery program.

Predation is also not viewed as a major driver of sage grouse populations in Montana. It is recognized that predators can be a threat to localized populations, particularly in areas of high habitat fragmentation. Ways to minimize the effects of predators on sage grouse are identified in Attachment B of the Montana Sage Grouse Habitat Conservation Program. It is also recognized that the best way to minimize the effects of predators on sage grouse is to provide good quality habitat in sufficient quantity (Executive Order 12-2015, Attach. A, pg. 3).

8. Comments pertaining to introducing diseased sage grouse to Canada

Comment #8: "Is this movement of birds going to result in Avian Influenza in Canada?"

Response

Appendix 4, pgs 46-49 in the Draft EA describes in detail tests that will be completed for all significant diseases (to include Avian Influenza) as they relate to sage grouse and birds. These tests are also required for several of the required USDA and Canadian Food Inspection Agency permits.

MFWP and AEP undertook extensive disease testing of all sage grouse that were translocated from South Phillips and South Valley counties in 2011-2012. Included in the suite of disease sampling was collection of cloacal/throat swabs for Avian Influenza (AI) testing. A total of 39 sage grouse were sampled, with all testing negative for AI. As a requirement of the Canadian Food Inspection Agency and the Government of Alberta, any subsequently translocated sage grouse would be tested for AI using the same methodology. Since the source populations for subsequent translocations would be the same as those used in 2011-12 and there is no indication of new AI infections in those populations, AEP has determined that the risk of introducing AI to Alberta through these translocations is low.

9. Comments pertaining to sage grouse habitat in Alberta

Comment #9: "The habitat type in Canada, silver sagebrush, is marginal habitat for prolific SG populations."

Comment #12: "If you take our birds into an area without proper habitat they will most likely die."

Comment #20: "What is lacking in the proposal from AEP is the habitat the sage grouse will have available to them in their new home."

Comment #22: "All accommodations for the bird's survival seem to be sometime in the future."

Response

Silver sagebrush continues to provide high quality habitat, consistent with the requirements of all life stages of sage grouse. Previously translocated sage grouse from Montana quickly acclimated to silver sagebrush habitat and successfully bred, nested and raised young there (Section 3.2.2, pg. 26). Silver sagebrush habitat has supported a population of thousands of sage grouse throughout southeastern Alberta, northern Montana and southwestern Saskatchewan for hundreds of years. There is no indication that silver sagebrush is 'marginal' habitat for sage grouse.

Alberta continues to contain large amounts of intact habitat available for sage grouse. AEP considers a 42 township area in the southeastern corner of the

province of Alberta as its current greater sage grouse range. This 1540 mile² area has been the stronghold for the Alberta sage grouse population for more than 40 years. Analysis of land cover layers developed by the Northern Sagebrush Steppe Initiative (NSSI) provides a strong depiction of current habitat conditions in southeastern Alberta. NSSI land cover categories can be grouped into two classes; habitat *beneficial or neutral to sage grouse*, and habitat *detrimental to sage grouse*. Beneficial or neutral habitat in Alberta currently consists of native grasslands (78.2%), exposed land (i.e. clay flat, badlands) (6.2%), shrublands (i.e. native shrub cover primarily associated with riparian habitat) (4.3%), wetlands (2.9%) and water bodies (0.2%). Detrimental habitat in Alberta currently consists of agricultural lands (8.0%), developed lands (i.e. towns, homesteads) (0.1%) and mixed coniferous/deciduous forests (0.1%). It is clear that the majority of habitat in the current sage grouse range of Alberta continues to be large tracts of intact native grasslands and detrimental habitat only comprises 8.2% of the total area.

AEP has worked in collaboration with conservation organizations such as the Alberta Conservation Association, Pheasants Forever and the Alberta Fish and Game Association, to restore parcels of agricultural land back to native grassland. To-date 1,300 acres have been reseeded to native grassland, with an additional 90 acres slated for spring 2016 and 250 acres slated for spring 2017.

Industrial activity within the current Alberta sage grouse range is declining with only 26.8% of all well sites that have been drilled continuing to actively produce. Regulatory measures have been enacted by AEP, Alberta Energy and the Federal Government of Canada to further restrict industrial development through timing restrictions, access restrictions and prohibitions regarding destruction and degradation of native habitat.

AEP has undertaken other habitat initiatives to reduce detrimental effects on sage grouse. These include; the removal of unused or abandoned structures, removal and relocation of power lines, removal of non-native vegetation and fence retrofitting and marking. These initiatives are ongoing and are expected to increase functionality and reduce fragmentation of beneficial sage grouse habitat.

10. Comments pertaining to use of MFWP department resources required to carry out the translocation

Comment #14: "This relocation plan will create a demand for Montana FWP field biologists time, which should be used to document SG populations in Montana."

Comment #28: "The draft EA Needs to Identify with More Specificity how the Proposed Project will be Funded."

Response

MFWP agrees that there will be MFWP resources needed to carry out this translocation; however use of MFWP resources will be minimal. MFWP biologists would need to be involved to ensure the effects of removing up to 40 sage grouse hens is minimized. This will be accomplished by surveying sage grouse leks throughout the source area to identify leks and sage grouse

distribution that are most prolific and therefore be minimally affected by the removal of several hens per lek. Much of the survey work is already occurring to monitor populations and this aspect of the project would not create significant additional demand on MFWP field biologists.

There would also need to be MFWP staff involvement during capture operations to facilitate capture activities, landowner/agency communication, and other logistics that require MFWP to be the lead. The number of MFWP staff and the amount of time and resources spent by MFWP on the capture will be reduced as compared to past captures so that sage grouse monitoring and other efforts for sage grouse can continue. Additionally, AEP will provide most of the operation funding to carry out the capture and translocation. Similar to the previous efforts in 2011 and 2012, AEP will provide operation funding associated with lodging and meals, as well as providing all specialized capture equipment. AEP is also willing to assist MFWP staff with sage grouse lek monitoring to offset MFWP time spent on the capture.

11. Comments pertaining to migration and connectivity between Montana and Alberta sage grouse populations.

Comment #18: "Several studies have shown natural migration between the two countries. No need for human intervention"

Comment #21: "There is no data to suggest along a possible migratory route from South Valley County to or from Manyberries Alberta, there is any habitat (sagebrush food and cover) for the birds, in fact it is just the opposite (sagebrush sod conversion, gas field development, roads, power lines etc)."

Response

At one time Alberta, Saskatchewan and Montana shared sage grouse across what are now jurisdictional boundaries. Since source populations in Montana for translocations are approximately 150 miles from the core of Alberta's sage grouse range, it is unlikely that movements would occur between those two populations. However, the distance between proposed release leks in Alberta and the closest active sage grouse lek in Montana is less than 50 miles. MFWP and AEP believe that an increasing Alberta sage grouse population could provide benefit to adjacent populations in Saskatchewan and northern Montana. Through initiatives such as the NSSI, collaboration among cooperating jurisdictions will assist to maintain and increase connectivity of sage grouse habitat.

12. Comments pertaining to the inadequacy of the EA and/or the need for an EIS.

Comment #24: "An EIS is Required for the Proposed Management Action; an EA is Legally Inadequate."

Comment #27: "The "No Action" Analysis is Skewed, and does not Comport with the Requirement that the Analysis be Objective."

Comment #29: "The Draft EA is Inadequate because there is No Discussion of whether FWP has Coordinated with and/or Consulted with County Officials"

Comment #30: "Public Meetings needs to be Held in all Affected Counties."

Response

MFWP disagrees with the opinions of the adequacy of the draft environmental assessment (EA).

The department has the discretion to decide which environmental review document; either an EA or environmental impact statement. This decision is based on a number of considerations including but not limited to the significance criteria described in Administrative Rule 12.2.432 that asks the department to consider 1) if the proposed action is precedent setting, 2) is in conflict with any federal, state or local laws, 3) the severity/duration/geographic extent of the proposed action, 4) is the proposed action growth inducing or inhibiting, 5) the quality and quantity of each resource being affected, and 6) the importance of each resource to the state and society.

In addition to the department weighing the significance criteria, the department can choose to prepare an EA instead of an EIS even when the action is one that might normally be require an EIS, but effects can be mitigable below the level of significance through design or enforceable controls (ARM 12.2.430 (4)). As in the case of this project, potential significant negative impacts to the local sage grouse population can be managed through the monitoring of the health and status of the sage grouse in the capture areas is outlined in the draft EA on pages 16 and 19 and Appendix 6, as well as described in the previous responses to comments.

Although there is no guidance in Rule for how the No Action alternative is to be described, typically there are two ways it can be presented depending upon the nature of the project. One way is that the proposed project would not take place thus the status quo of the existing resources is maintained. The other option is that the department would not pursue the action, as would be the case if the action was negotiations for a land acquisition. The first description was used for this project in that the No Action alternative means no Montana sage grouse would be transferred to Alberta. Part 3.3 of the draft EA describes what the predicted impacts of the No Action would be to the relevant resources.

Comment #29 referenced statute 75-1-104 MCA which states, "**Specific statutory obligations unimpaired.** Sections [75-1-103](#) and [75-1-201](#) do not affect the specific statutory obligations of any agency of the state to: (1) comply with criteria or standards of environmental quality; (2) coordinate or consult with any local government, other state agency, or federal agency; or (3) act or refrain from acting contingent upon the recommendations or certification of any other state or federal agency." This statute does not obligate agencies to coordinate or consult with other local, state or federal agencies; it only acknowledges that sections 75-1-103 and 75-1-201 do not impair any statutory responsibilities an agency might have on those three points.

Similar to the discretion the department has to choose which analysis format to complete, the department has the discretion to offer public meetings or not. The department has the responsibility to provide additional opportunities for public review of an EA consistent with the seriousness and complexity of the environmental issues associated with the proposed action and the level of public interest (ARM 12.2.433 (3)). The proposed project is not unique. A similar sage grouse project was proposed in 2011 in the same area and that public review process received comments from four individuals (2011 Sage Grouse Translocation EA Decision Notice - http://fwp.mt.gov/news/publicNotices/decisionNotices/pn_0498.html). Based on the level of public interest for the 2011 sage grouse project, the limited environmental issues predicted with this effort, and that a 30-day public comment period was provided, the department decided offering a public meeting was not warranted.

References

- Bush, K.L., C.K. Dyte, B.J. Moynahan, C.L. Aldridge, H.S. Sauls, A.M. Battazzo, B.L. Walker, K.E. Doherty, J. Tack, J. Carlson, D. Eslinger, J. Nicholson, M.S. Boyce, D.E. Naugle, C.A. Paszkowski, D.W. Coltman. 2011. Population structure and genetic diversity of greater sage grouse (*Centrocercus urophasianus*) in fragmented landscapes at the northern edge of the range. *Conservation Genetics*. 12:527-542.
- Connelly, J.W., S.T. Knick, M.A. Schroeder, S.J Stiver. 2004. Conservation assessment of greater sage grouse and sagebrush habitats. Western Association of Fish and Wildlife Agencies. Unpublished Report. Cheyenne, Wyoming.
- Smith, R. E. 2013. Conserving Montana's sagebrush highway: long distance migration in sage grouse. Thesis, University of Montana, Missoula, USA.
- Braun, C.E. 1998. Sage Grouse declines in Western North America: What are the problems? *Western Association of State Fish and Wildlife Agencies* 78: 139-156.
- Wambolt, C.L, et al. 2002. Conservation of Greater Sage grouse on Public Lands in the Western U.S.: Implications of Recovery and Management Policies. PACWPL Policy Paper SG-02-02.
-