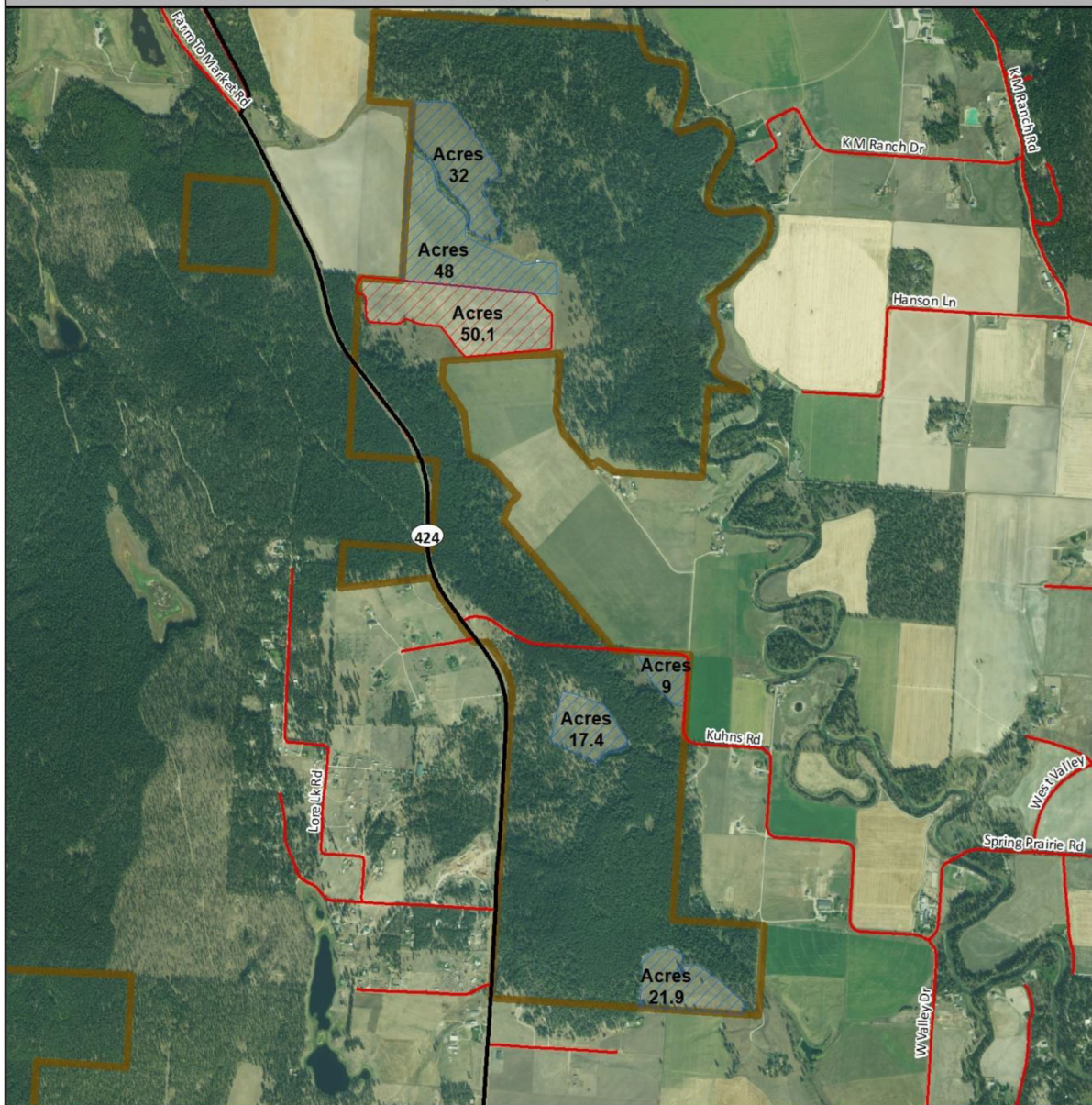



# Ray Kuhns WMA - Field Locations and Proposed Lease Area MONTANA FWP

T30N; R22W: Portions of Sections 20, 21, 29, and 28 in Flathead County



## Legend

 Wildlife Management Area Boundary

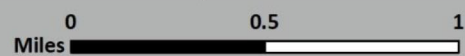
## Type

 Old Field

 Lease Area



Author: Wildlife Division, Montana Fish, Wildlife & Parks, 12/18/2018  
Layer Source: Administrative boundaries and FWP Lands data from  
Montana Fish, Wildlife & Parks, Helena, MT. Aerial Photos from NAIP, 2015

0 0.5 1  
Miles 

**Figure 1.** Layout of the 1,530-acre Ray Kuhns Wildlife Management Area, Flathead County. The 50-acre red hatched area is proposed for establishing a farming lease.