

Figure 1. The Proposed W-Bar CE (green outline) is located 10 miles NE of Wibaux in close proximity to a number of Block Management Areas (green crosshatch), and roughly 15 Miles NE of the Horse Creek Complex CE (blue crosshatch); located in Wibaux County.

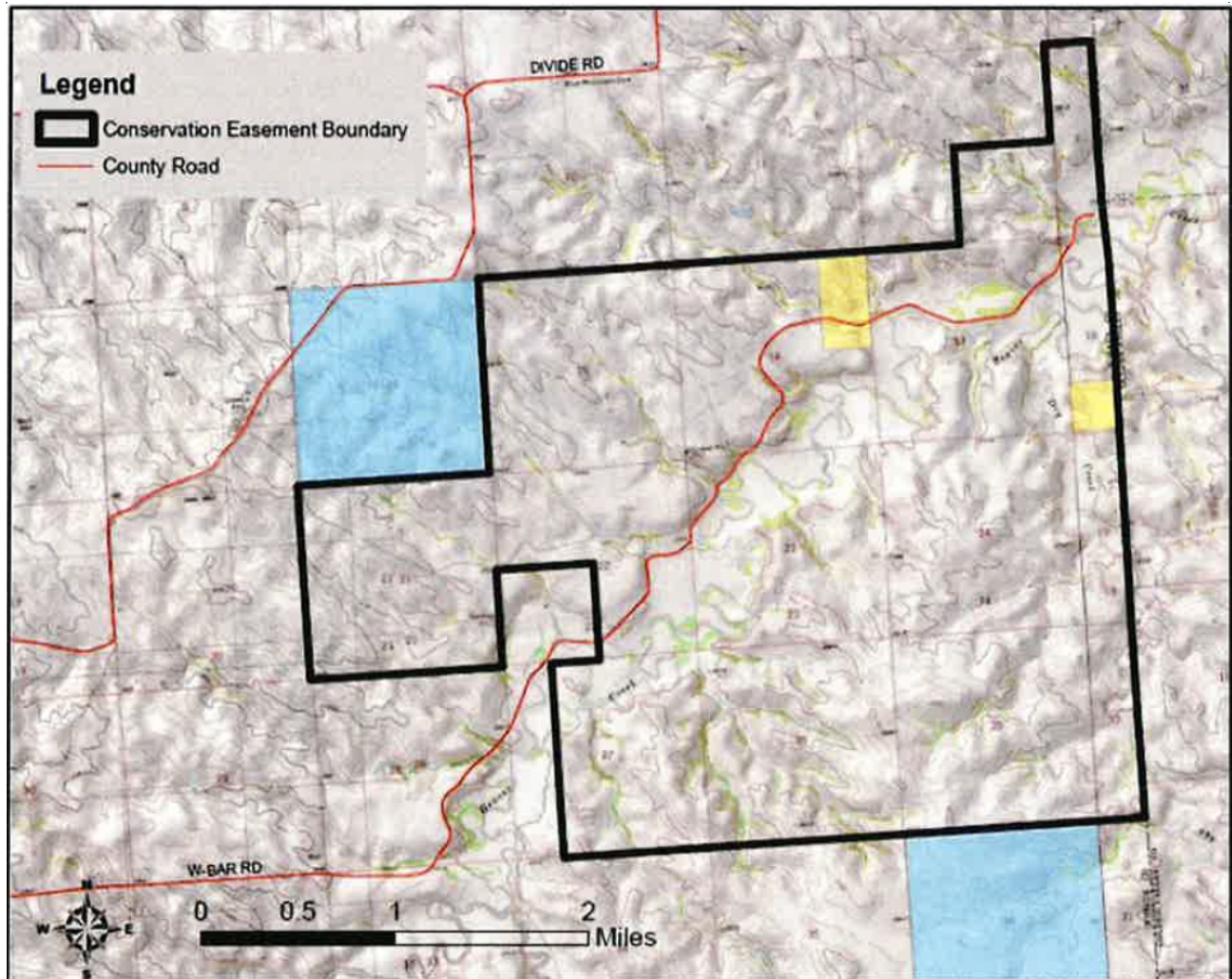


Figure 2. The Proposed W-Bar CE is bisected by a county road, providing easy public access to Beaver Creek bottoms, numerous woody draws that traverse the property, and associated shrublands and native grasslands.