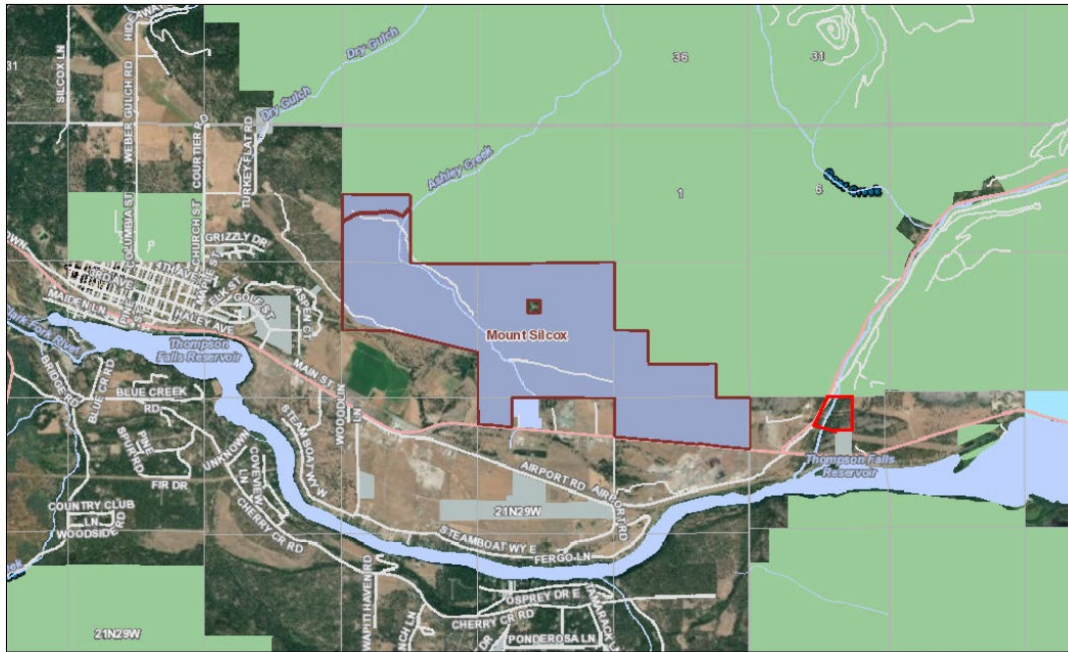


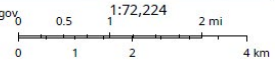
# Area Map



- Wildlife Management Areas (Boundaries)**
- Wildlife Management Areas (Boundaries)
- Public Land Ownership**
- BLM
  - National Park Service
  - Other Federal Lands
  - US Fish and Wildlife Service
  - US Forest Service
  - MT Fish, Wildlife & Parks
  - State Trust Lands
  - Other State Lands
  - Local Government

Some layers may not appear in the legend due to page size limitations.

Printed from [fwp.mt.gov](http://fwp.mt.gov)  
April 26, 2019



This map was generated from the Montana Fish, Wildlife & Parks (FWP) internal FWP Mapper online mapping system. Data layers on this map may depict sensitive species level information. This map is not intended for distribution or use beyond work associated with FWP.

# Close Up Map



## Cadastral Labels

Cadastral Labels

## Cadastral Parcels

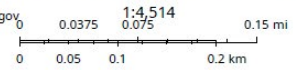
Cadastral Parcels

## Public Land Ownership

- BLM
- National Park Service
- Other Federal Lands
- US Fish and Wildlife Service

- US Forest Service
- MT Fish, Wildlife & Parks
- State Trust Lands
- Other State Lands
- Local Government

Printed from fwp.mt.gov  
April 26, 2019



This map was generated from the Montana Fish, Wildlife & Parks (FWP) internal FWP Mapper online mapping system. Data layers on this map may depict sensitive species level information. This map is not intended for distribution or use beyond work associated with FWP.

Some layers may not appear in the legend due to page size limitations