

Figure 1. The Wall Creek Wildlife Management Area and the proposed addition (green parcels at the north end of the WMA).

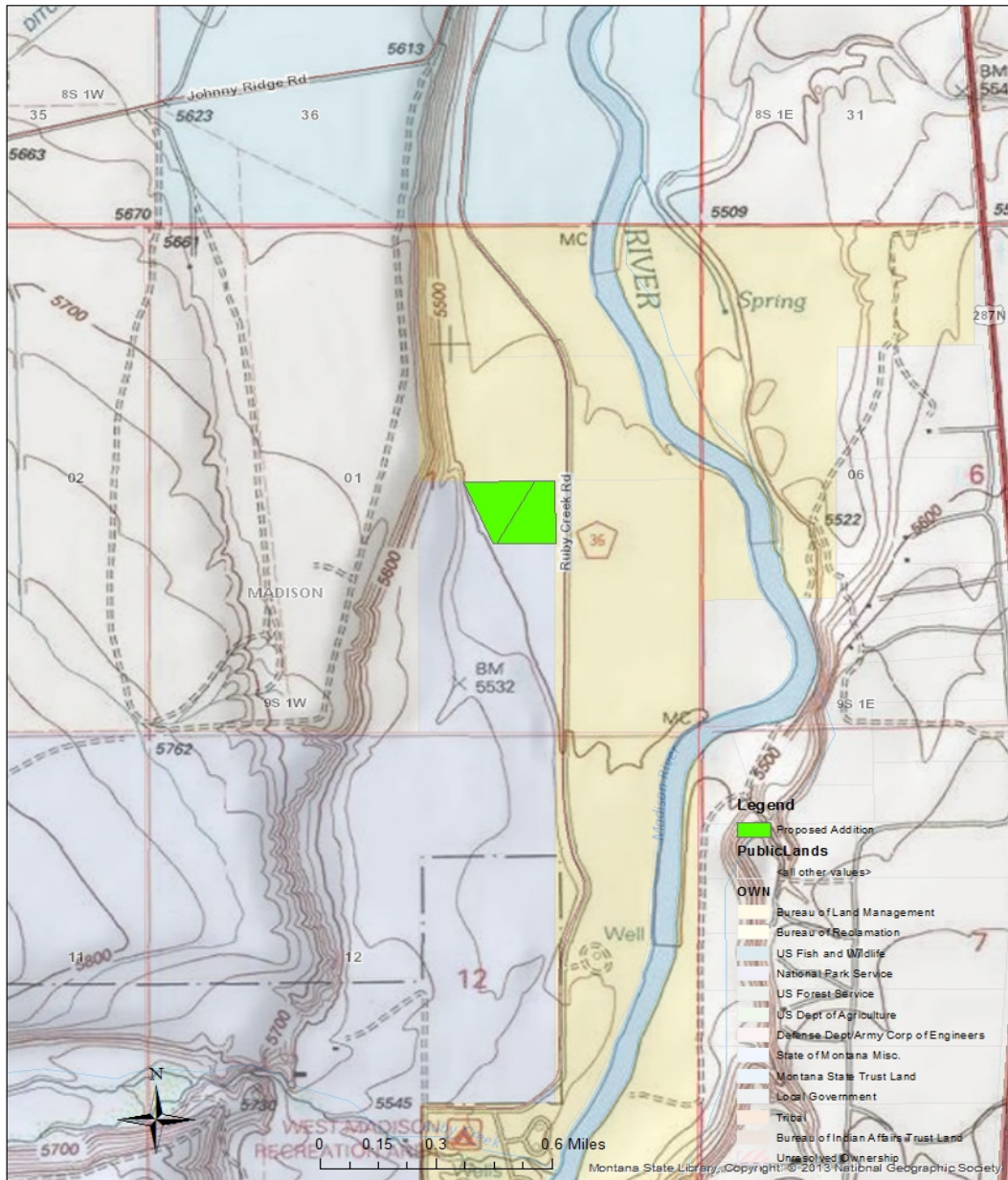


Figure 2. Proposed addition to the Wall Creek Wildlife Management Area. Lands to the west and south of these parcels are WMA-lands; lands to the north and east are administered by BLM.

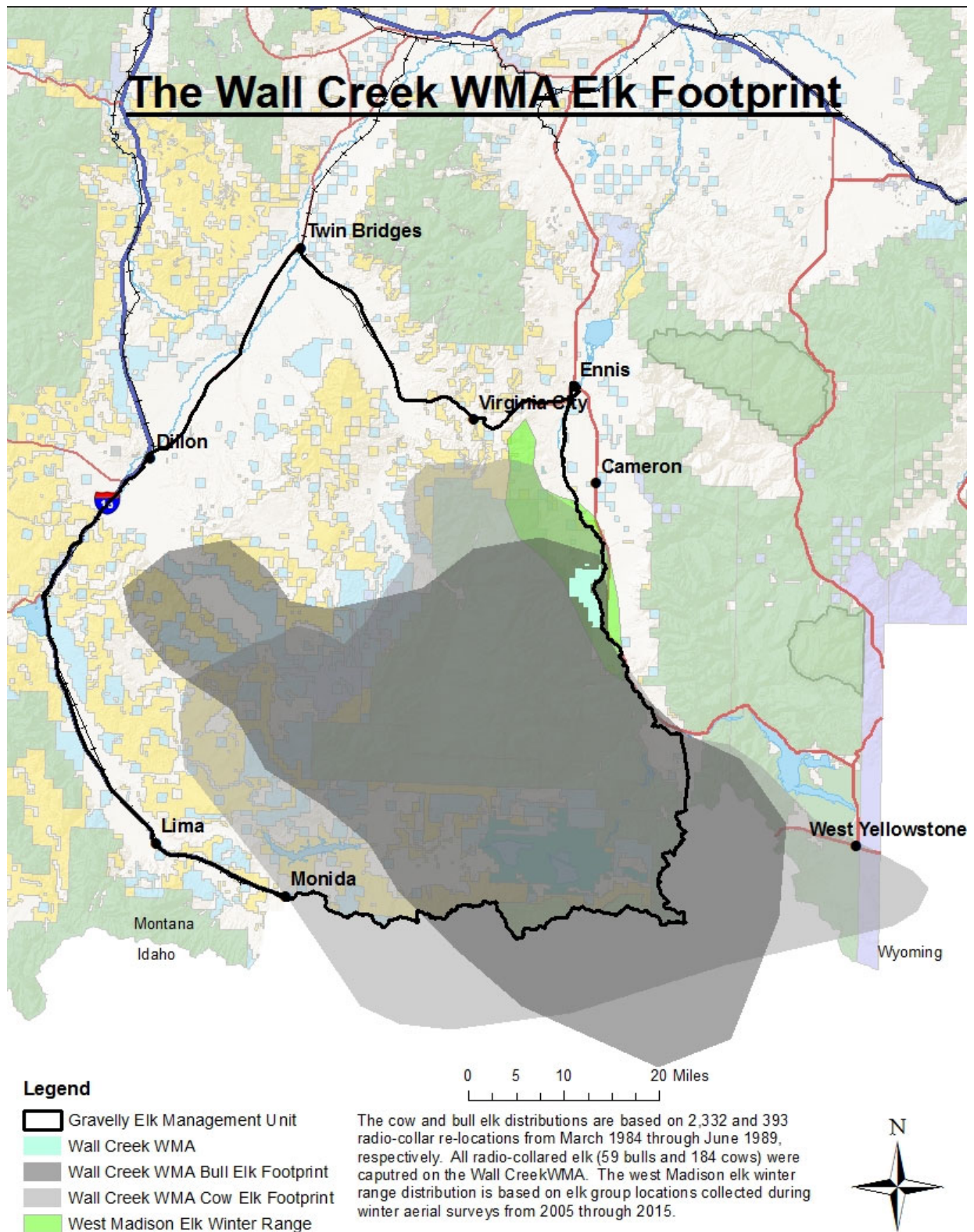


Figure 3. Typical summer and fall distribution of bull and cow elk, that winter on and near the Wall Creek Wildlife Management area.