

Figure 1. Thompson-Fisher Conservation Easement with locations of encroachments (cabin sites) to be removed from the easement as well as the 5-acre parcel to be added to the conservation easement (see lower right corner of map).

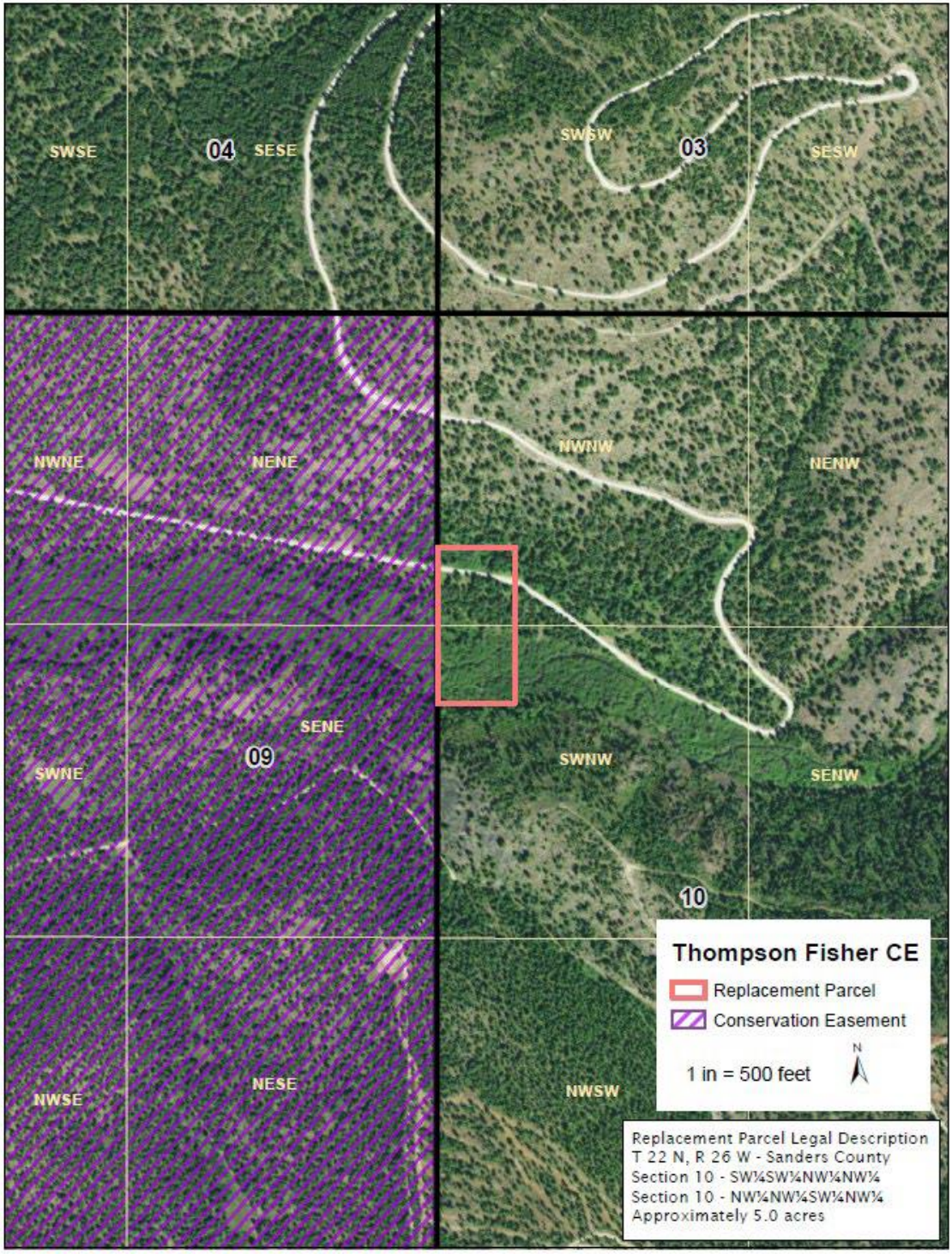


Figure 2. Aerial of the 5-acre parcel proposed to be added to the Thompson-Fisher Conservation Easement to replace the 5 encroached sites. The parcel is bisected by the Little Thompson River.