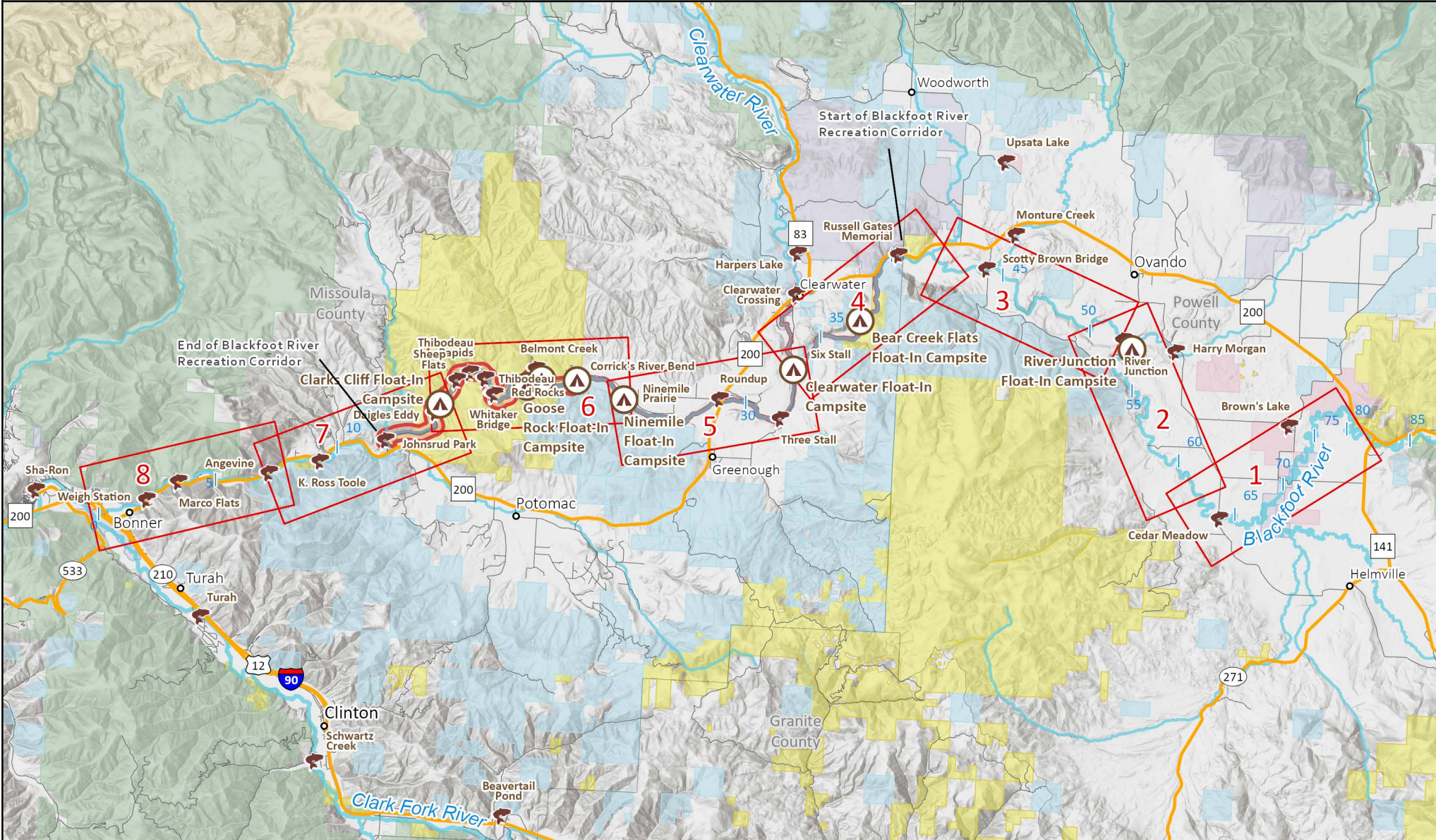


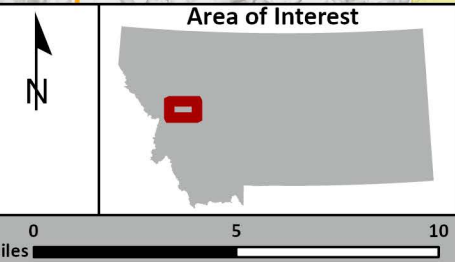
Blackfoot River Access and Camping Opportunities

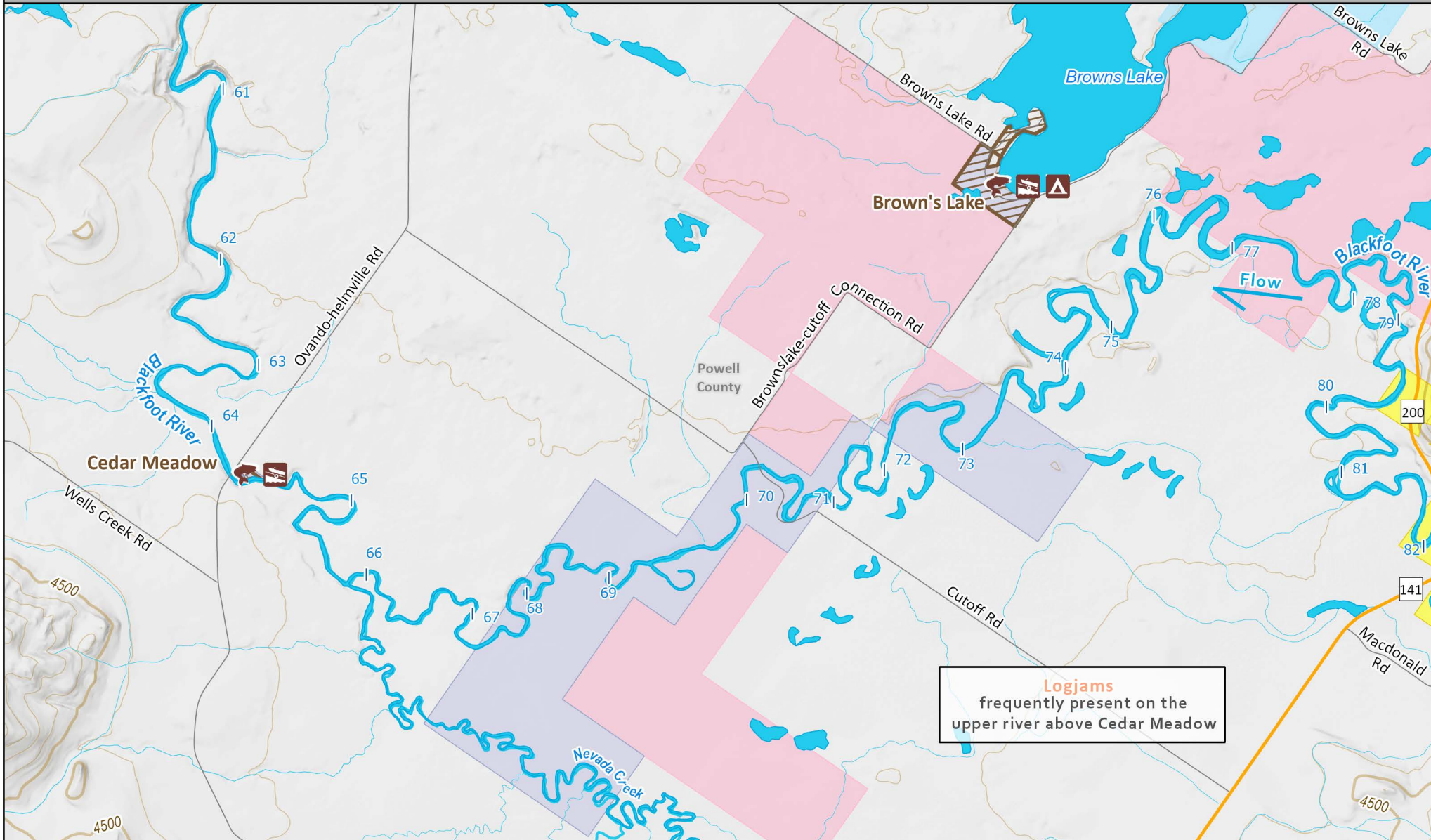
MONTANA FWP

Overview Map of Blackfoot River Corridor



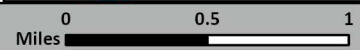
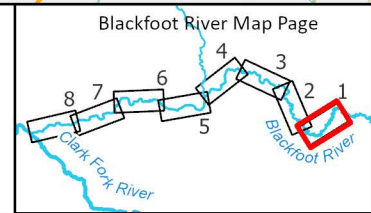
- | | | | | | |
|--|---------------------|--|-------------------------------------|--|--------------------------------|
| | Float-In Campsites | | Map Page | | Public Lands |
| | Fishing Access Site | | Blackfoot River Recreation Corridor | | Other Federal Land |
| | River Miles | | Indian Reservation | | US Forest Service |
| | | | | | Montana Fish, Wildlife & Parks |
| | | | | | Montana State Trust Land |

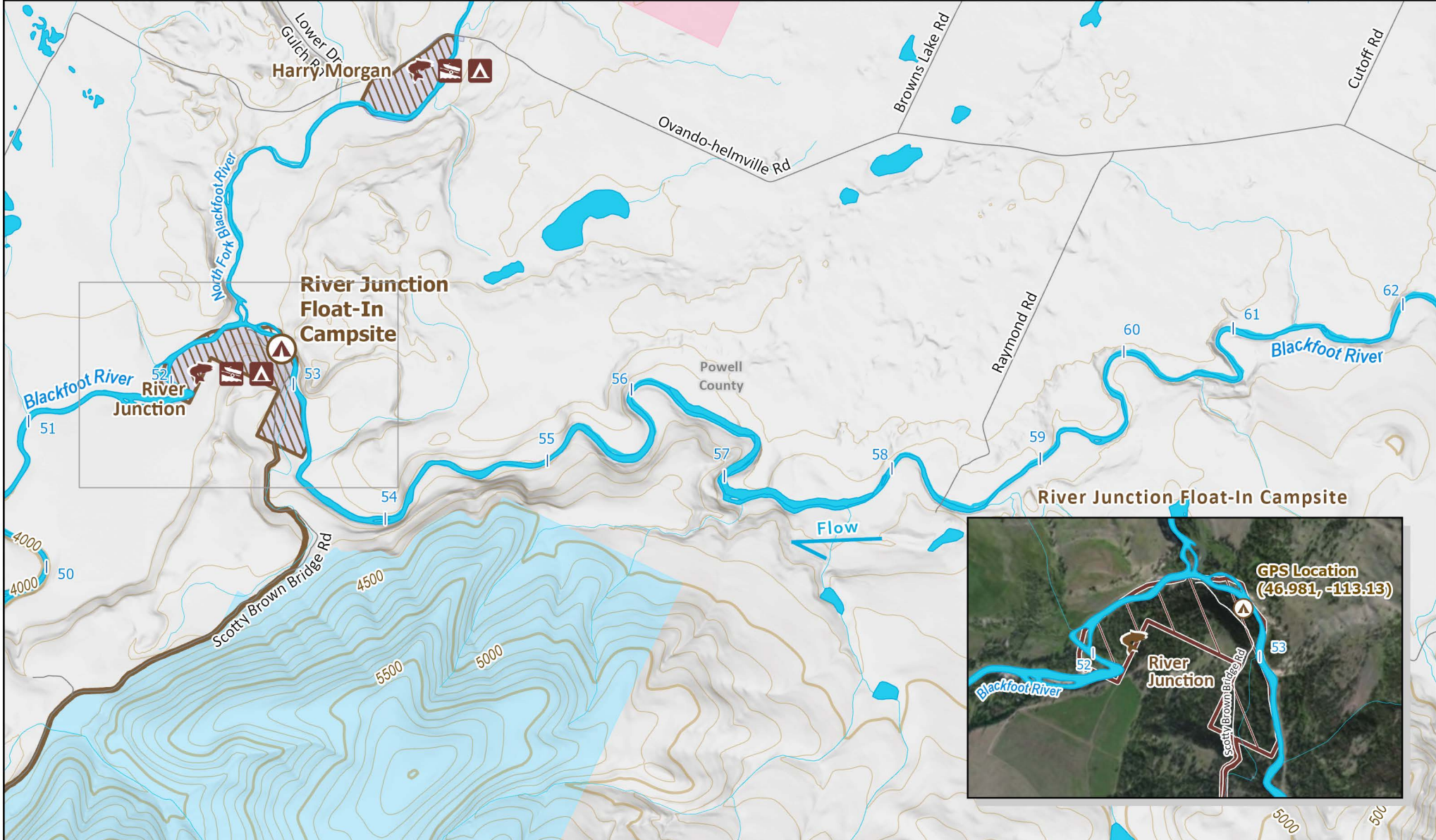




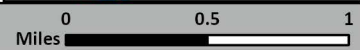
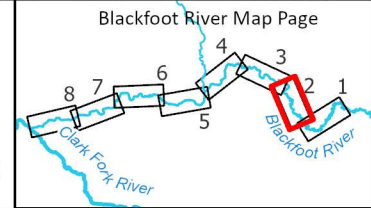
	Fishing Access Site (FAS)		Boat Ramp		River Miles	Public Lands
	FAS Boundary		Camping Available		US Bureau of Land Management	
					Montana Fish, Wildlife & Parks	
					Montana State Trust Land	

Logjams
frequently present on the
upper river above Cedar Meadow

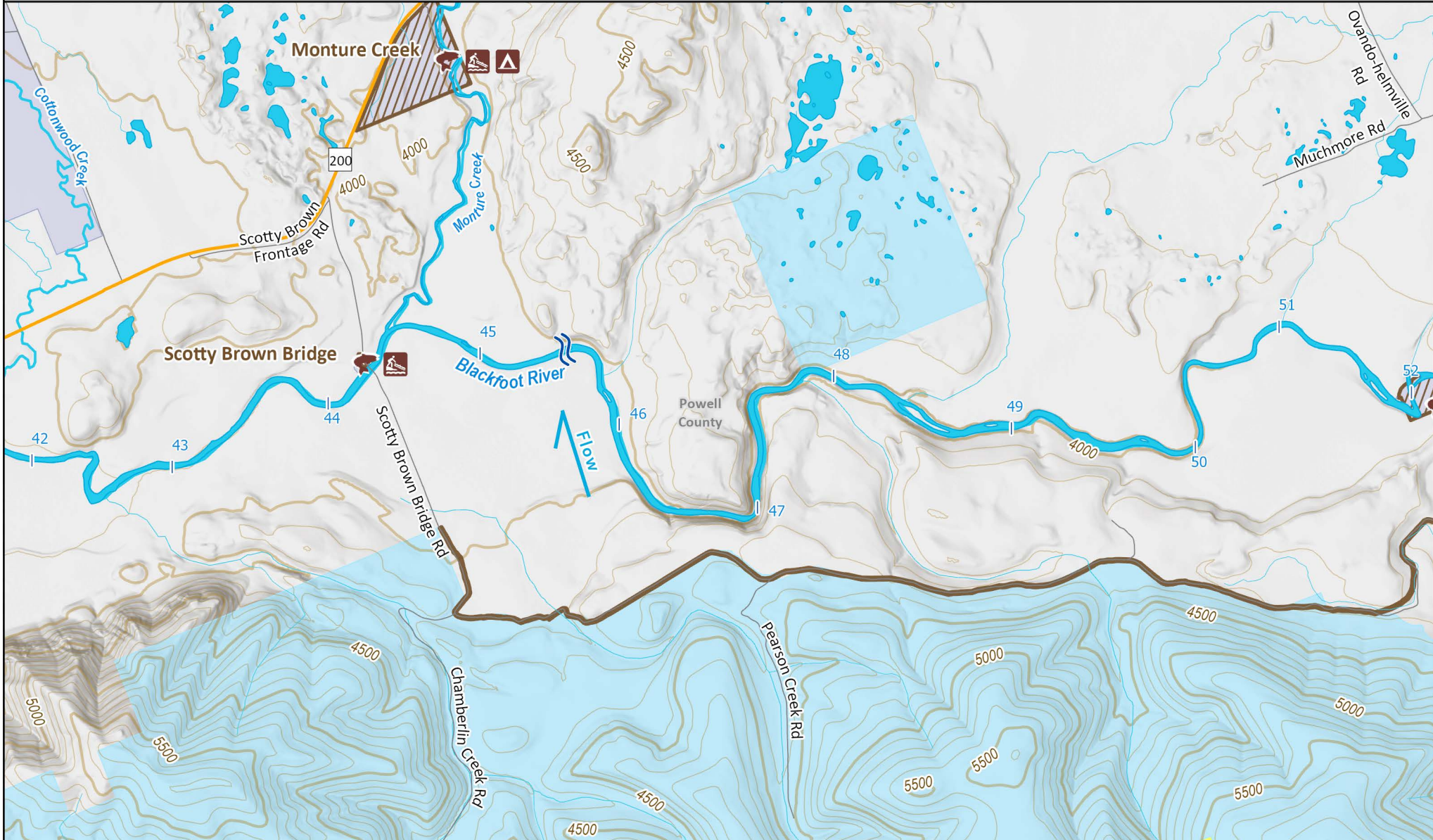




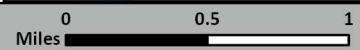
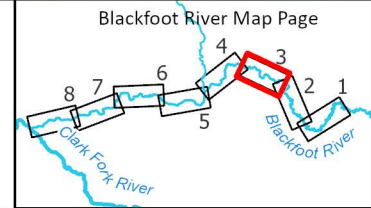
	Fishing Access Site (FAS)		Float-In Campsites		Camping Available	Public Lands
	FAS Boundary		Boat Ramp		River Miles	

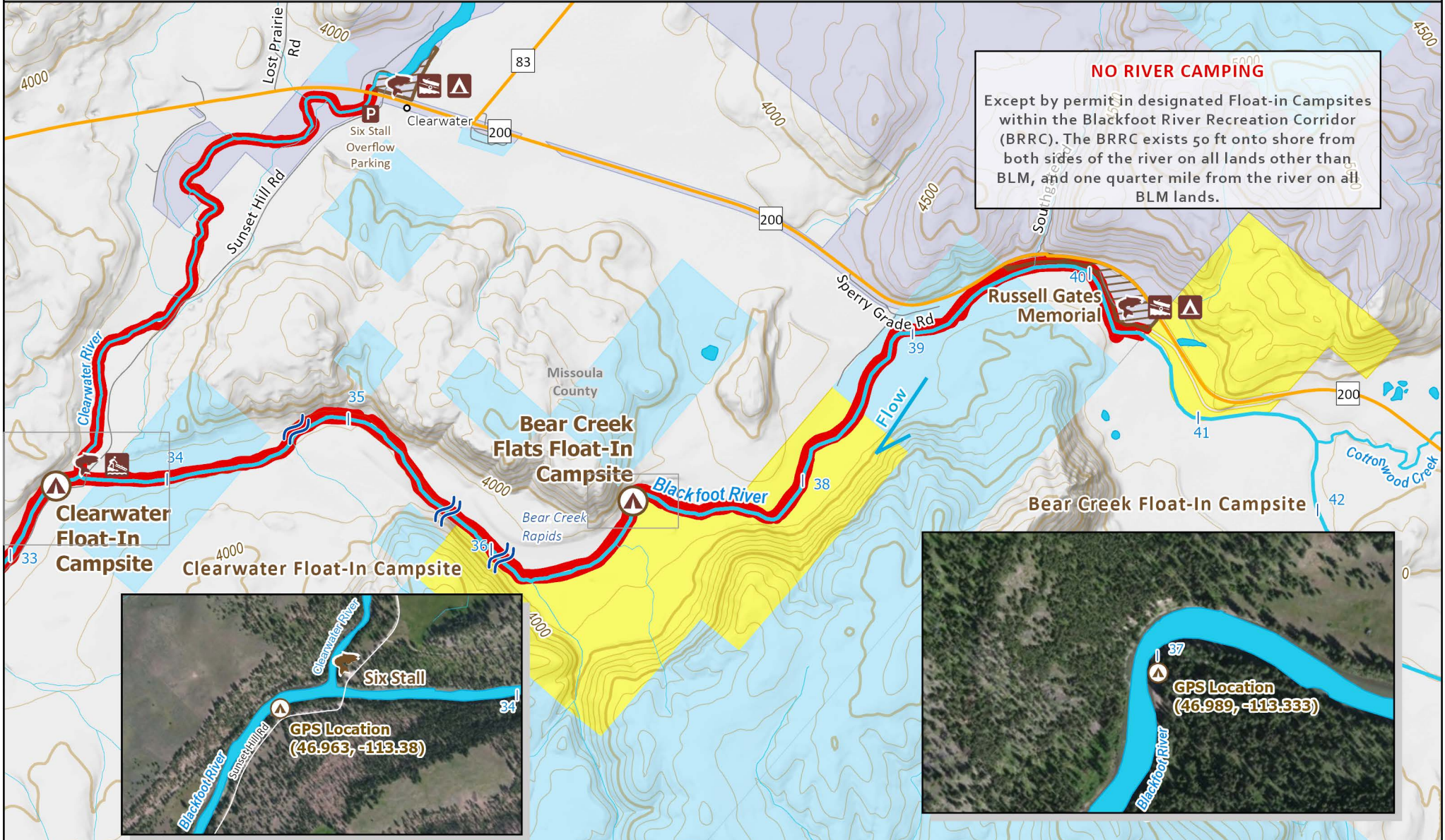


Blackfoot River Access and Camping Opportunities



	Fishing Access Site (FAS)		Hand Launch		River Miles		Public Lands
	FAS Boundary		Camping Available		Class II Rapid		US Bureau of Land Management
							Montana Fish, Wildlife & Parks
							Montana State Trust Land

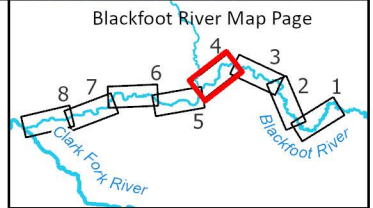


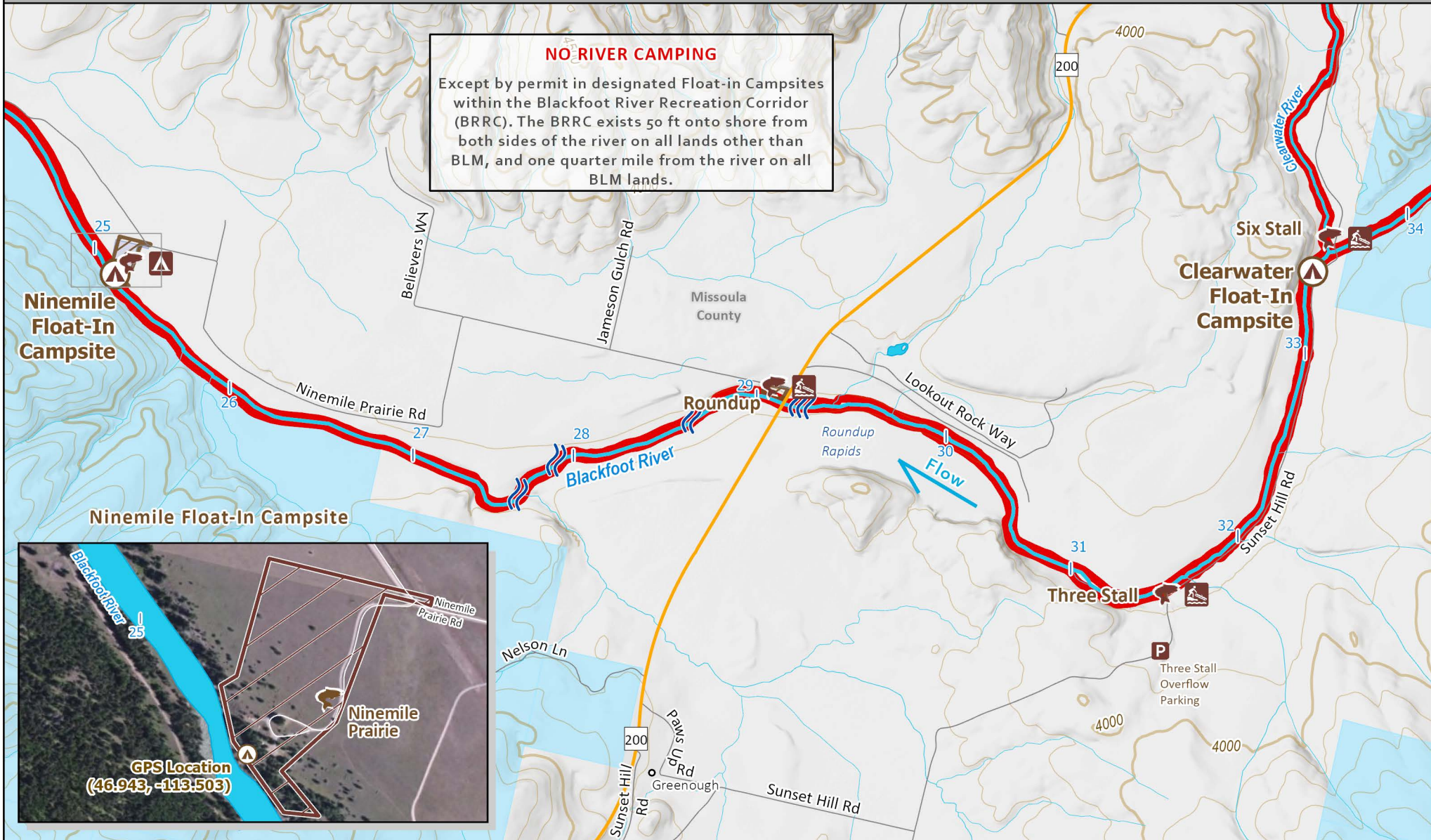


NO RIVER CAMPING

Except by permit in designated Float-in Campsites within the Blackfoot River Recreation Corridor (BRR). The BRR exists 50 ft onto shore from both sides of the river on all lands other than BLM, and one quarter mile from the river on all BLM lands.

- | | | | | | | | |
|--|---------------------------|--|-------------------|--|---|--|--------------------------------|
| | Fishing Access Site (FAS) | | Boat Ramp | | River Miles | | Public Lands |
| | FAS Boundary | | Hand Launch | | Class II Rapid | | US Bureau of Land Management |
| | Float-In Campsites | | Camping Available | | Blackfoot River Recreation Corridor (BRR) | | Montana Fish, Wildlife & Parks |
| | Overflow Parking | | | | | | Montana State Trust Land |

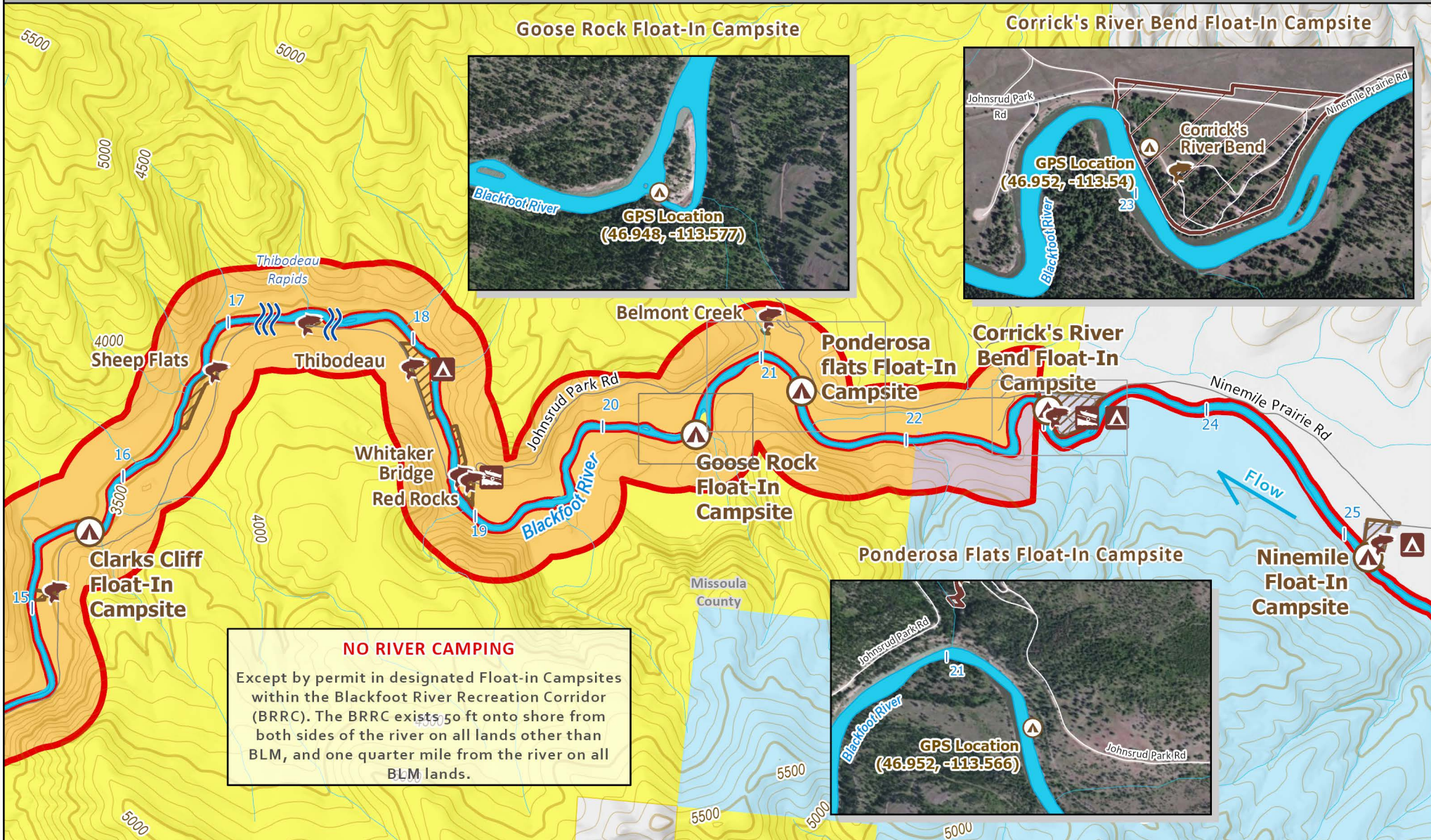




Fishing Access Site (FAS)	Hand Launch	River Miles	Blackfoot River Recreation Corridor (BRRC)
FAS Boundary	Camping Available	Class II Rapid	Public Lands
Float-In Campsites	Overflow Parking	Class III Rapid	Montana Fish, Wildlife & Parks
			Montana State Trust Land

Blackfoot River Map Page

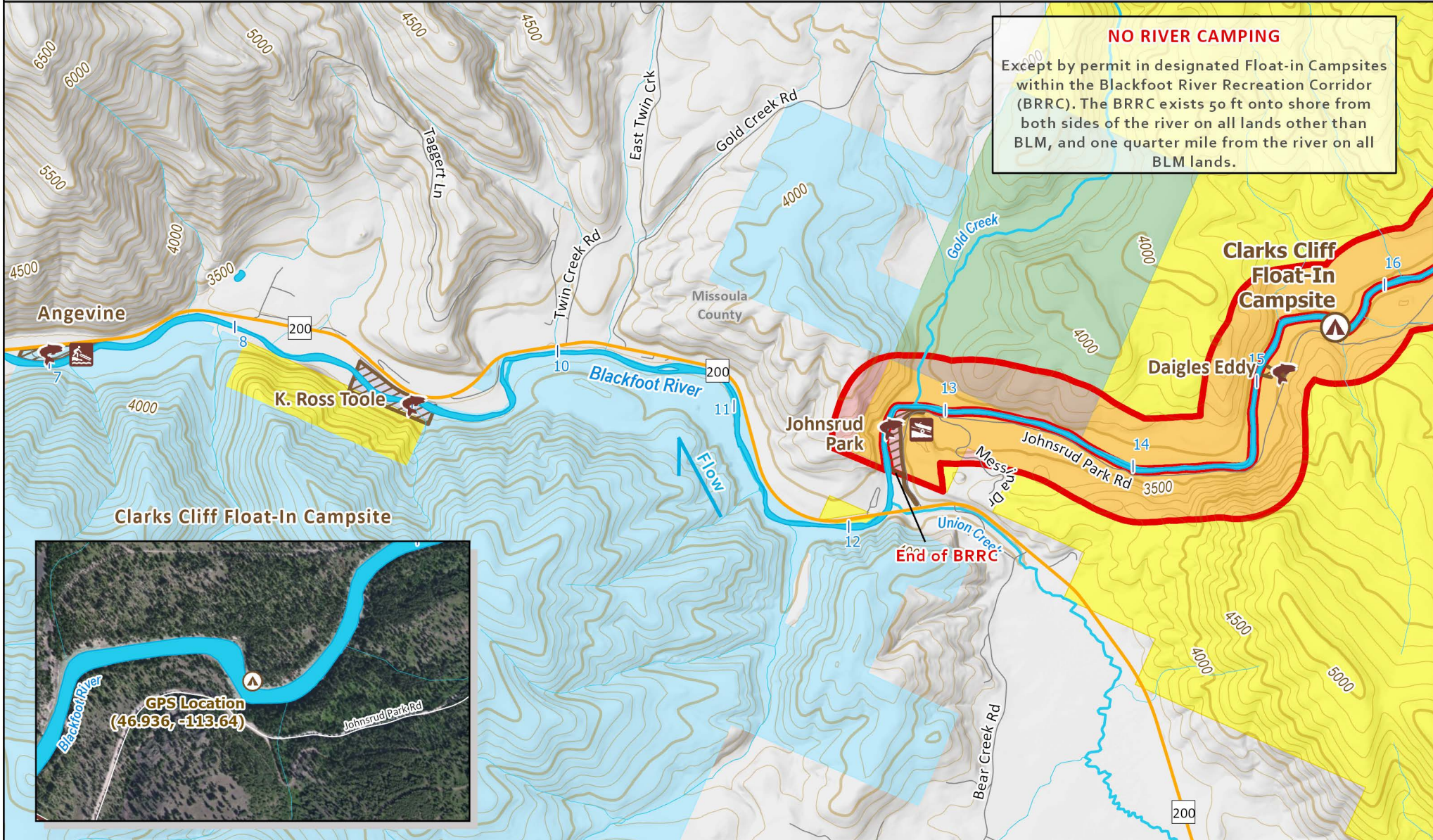
0 0.5 1
Miles



	Fishing Access Site (FAS)		Boat Ramp		Class II Rapid	Public Lands US Bureau of Land Management Montana Fish, Wildlife & Parks Montana State Trust Land
	FAS Boundary		Camping Available		Class III Rapid	
	Float-In Campsites		River Miles		Blackfoot River Recreation Corridor (BRR)	

Blackfoot River Map Page

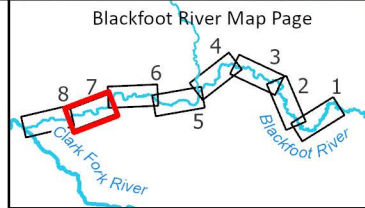
0 0.5 1
Miles

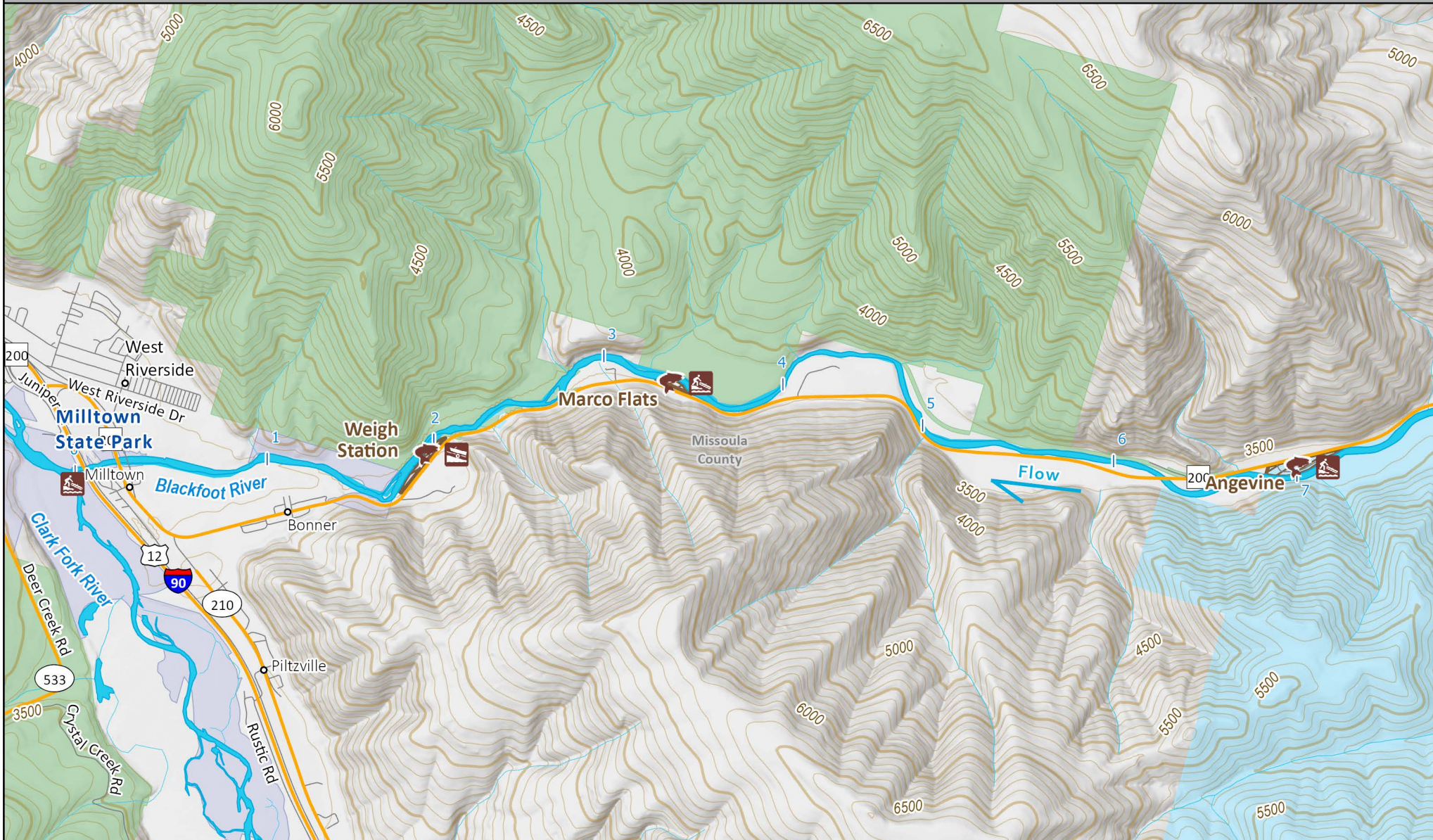


NO RIVER CAMPING
 Except by permit in designated Float-in Campsites within the Blackfoot River Recreation Corridor (BRR). The BRR exists 50 ft onto shore from both sides of the river on all lands other than BLM, and one quarter mile from the river on all BLM lands.



- | | | | | | |
|--|---------------------------|--|---|---------------------|--------------------------------|
| | Fishing Access Site (FAS) | | Boat Ramp | Public Lands | |
| | FAS Boundary | | Hand Launch | | US Bureau of Land Management |
| | Float-In Campsites | | River Miles | | US Forest Service |
| | | | Blackfoot River Recreation Corridor (BRR) | | Montana Fish, Wildlife & Parks |
| | | | | | Montana State Trust Land |





	Fishing Access Site (FAS)		Boat Ramp		River Miles	Public Lands
	FAS Boundary		Hand Launch			

