



Montana State Parks & Recreation Board

Agenda Item Cover Sheet

THE **OUTSIDE** IS IN US ALL.

Meeting Date: March 3, 2022

Agenda Item: Flathead Lake State Park – Big Arm Unit Archery Range Development

Time Needed on Agenda: 15 Minutes

Background: FWP proposes to develop a public archery range at the Big Arm Unit of Flathead Lake State Park. The archery range would be located on a parcel of Big Arm that is located on the west side of US Highway 93 directly across from the park's main entrance. This parcel is currently utilized for dispersed hiking. This proposal would take advantage of a Pittman Robertson Act grant, administered by the United States Fish & Wildlife Service, that is aimed at increasing public shooting sport opportunities.

The archery range would include an asphalt parking lot, an entry kiosk with informational & regulatory signage, a precast vault latrine, a 30' x 15' covered shooting line, & lockable storage for archer lessons & practice. An archery range trail with up to 12 shooting stations would also be developed within the project area. One shooting station would include an elevated shooting platform. Shooting stations would be located to ensure safe backdrops & distances from park boundaries.

Public Involvement Process & Results:

FWP released a draft environmental assessment (EA) for public review on Nov. 10, 2021 & asked for public comment through Dec. 10, 2021. FWP held a virtual public informational meeting on Nov. 30, 2021, at 6 p.m. Seven comments were received.

Alternatives & Analysis

~Alternative A: No Action - FWP would not develop a public archery range at the Big Arm Unit of Flathead Lake State Park. This property would be used primarily for dispersed public recreation as it currently is. The opportunity to provide a public archery range would not be pursued at this location.

~Alternative B: Proposed Action – Archery Range Development with parking west of US Hwy 93 Across from Main Park Entrance – With this proposed action, FWP would develop a public archery range in the southwest corner of the Big Arm Unit of Flathead Lake State Park. Development would include a 30' x 15' covered shooting line & lockable storage for archer lessons & practice, an entry kiosk with informational & regulatory signage & a precast vault latrine. An archery range trail with up to 12 shooting stations would be developed & each shooting station would include up to two targets located to maximize safety. One shooting station would include an elevated shooting platform. A 12-car asphalt parking lot & asphalt access road would also be developed on the west side of US Highway 93 across from the main park entrance to provide public & administrative access. This alternative would be contingent upon access approval by the Montana Department of Transportation (MDT).

~Alternative C: Archery Range Development with Parking West of US Hwy 93 South of Main Park Entrance - Alternative C is the same as Alternative B except that the access point from US Highway 93 to the 12-car parking lot would be developed further south of the main park entrance along with an asphalt access road. This alternative also would be contingent upon access approval by MDT.

~Alternative D: Archery Range Development with Parking East of US Hwy 93 - Alternative D is the same as Alternative B except that the 12-car asphalt parking lot & an additional asphalt access road to it would be developed on the east side of US Highway 93, north of the park's entrance station. No parking would be provided on the west side of US Highway 93. Archers would utilize the existing trail system & walking tunnel under US Highway 93 to access the archery range. The



Montana State Parks & Recreation Board Agenda Item Cover Sheet

THE **OUTSIDE** IS IN US ALL.

asphalt access road detailed in Alternative C would still be developed under Alternative D to provide administrative access for archery range & vault latrine maintenance, contingent upon MDT approval.

Agency Recommendation & Rationale: FWP feels this proposal would serve a need by providing a public archery range in an area that currently does not have one and recommends Alternative B as the best alternative.

Proposed Motion: I move that the Parks & Recreation Board authorize FWP to proceed with the development of a public archery range at the Big Arm Unit of Flathead Lake State Park as proposed in Alternative B.



State Parks (Boundaries)

State Parks (Boundaries)

Printed from fwp.mt.gov
July 8, 2021
Scale: 1:36,112
0 0.3 0.6 1.2 mi
0 0.5 1 2 km

This map was generated from the Montana Fish, Wildlife & Parks (FWP) internal FWP Mapper online mapping system. Data layers on this map may depict sensitive species level information. This map is not intended for distribution or use beyond work associated with FWP.

3. Project size -- estimate the number of acres that would be directly affected that are currently:

	<u>i. Acres</u>		<u>Acres</u>
b. (a) Developed:		(d) Floodplain	<u>0</u>
c. Residential	<u>0</u>		
d. Industrial	<u>0</u>	(e) Productive:	
i. (existing shop area)		Irrigated cropland	<u>0</u>
e. (b) Open Space/	<u>25</u>	Dry cropland	<u>0</u>
f. Woodlands/Recreation		Forestry	<u>0</u>
g. (c) Wetlands/Riparian	<u>0</u>	Rangeland	<u>0</u>
i. Areas		Other	<u>0</u>

4. Permits, Funding & Overlapping Jurisdiction.

- a. Permits: permits will be filed at least 2 weeks prior to project start.**
- i. Montana Department of Transportation – Highway Approach Permit
 - ii. Montana Department of Transportation – Highway Encroachment Permit
 - iii. Lake County Dept of Environmental Health – Septic Permit (Vault Latrine)



Region One 490 North Meridian Road Kalispell, MT 59901
DECISION NOTICE
And
Finding of No Significant Impact
for the
Flathead Lake State Park – Big Arm Archery Range Development

Thank you for your review and comments regarding the Draft Flathead Lake State Park -Big Arm Archery Range Development Environmental Assessment (EA). This project is intended to provide a public archery range within Flathead Lake State Park. Enclosed is a decision notice (DN) in which FWP responds to comments submitted during the public comment period. Upon completion of the public involvement process and by including this DN, FWP accepts the draft EA as final.

Sincerely,

James Williams / ACTING
James Williams
Region 1 Supervisor
Montana Fish, Wildlife & Parks

Description of Proposed Project

Montana Fish, Wildlife & Parks (FWP) proposes to develop a public archery range at the Big Arm Unit of Flathead Lake State Park. The archery range would be located on a parcel of Big Arm that is located on the west side of US Highway 93 directly across from the Park's main entrance. This parcel is currently utilized for dispersed hiking. This proposal would take advantage of a Pittman Robertson Act grant, administered by the United States Fish and Wildlife Service, that is aimed at increasing public shooting sport opportunities.

The archery range would include an asphalt parking lot, an entry kiosk with informational and regulatory signage, a precast vault latrine, a 30' x 15' covered shooting line, and lockable storage for archer lessons and practice. An archery range trail with up to twelve shooting stations would also be developed within the project area. One shooting station would include an elevated shooting platform. Shooting stations would be located to ensure safe backdrops and distances from park boundaries.

This public archery range would be a valuable amenity in Lake County and the Polson area, as there are currently no public archery ranges in that area. The nearest public range is located 41 miles north at Lone Pine State Park.

FWP has park staff who are certified National Archery in the Schools Program (NASP) instructors. Thus, the archery range would provide an excellent opportunity for archery programs for children and adults.

Montana has a growing number of schools participating in the National Archery in the Schools Program (NASP). More than 70 schools are enrolled in the program, and northwest Montana is rapidly growing its enrollment with 18 schools/programs enrolled. Since 2019, five new schools in northwest Montana have enrolled in the program due to resources and opportunities provided by FWP and its sites, such as the archery range at Lone Pine State Park. The NASP program can be taught indoors using the school's gymnasium or outdoors. Ranges such as the one in this proposal provide opportunities for NASP programs, trainings, and public education events that promote NASP and bowhunter education.

Montana Environmental Policy Act (MEPA) Process and Public Involvement

FWP released a draft environmental assessment (EA) for public review on November 10th, 2021 and asked for public comment through 5:00 p.m. on December 10th, 2021. FWP held a virtual public informational meeting on November 30, 2021, at 6:00 p.m. FWP ran legal ads describing the proposed project, the availability of the draft EA, and the public informational meeting in the Lake County Leader, Daily Inter Lake, and Helena Independent Record. FWP also mailed postcards to neighboring landowners. The draft EA was posted on FWP's official website and was also available at the Region One headquarters in Kalispell and online for people with internet access or through internet service at public libraries.

The EA evaluated the potential impacts of the following alternatives:

Alternative A: No Action

Under alternative A, no action, FWP would not develop a public archery range at the Big Arm Unit of Flathead Lake State Park. This property would be used primarily for dispersed public recreation as it currently is. The opportunity to provide a public archery range would not be pursued at this location.

Alternative B (Preferred Alternative): Archery Range Development with Parking West of US Hwy 93 Across from Main Park Entrance

Under alternative B, the agency's preferred alternative, FWP would develop a public archery range in the southwest corner of the Big Arm Unit of Flathead Lake State Park. Development would include a 30' x 15' covered shooting line and lockable storage for archer lessons and practice, an entry kiosk with informational and regulatory signage and a precast vault latrine.

An archery range trail with up to twelve shooting stations would be developed and each shooting station would include up to two targets located to maximize safety. One shooting station would include an elevated shooting platform. A 12-car asphalt parking lot and asphalt access road would also be developed on the west side of US Highway 93 across from the main park entrance to provide public and administrative access. This alternative would be contingent upon access approval by the Montana Department of Transportation (MDT).

Alternative C: Archery Range Development with Parking West of US Hwy 93 South of Main Park Entrance

Alternative C is the same as Alternative B except that the access point from US Highway 93 to the 12-car parking lot would be developed further south of the main park entrance, as depicted in Figure 1, along with an asphalt access road. This alternative also would be contingent upon access approval by MDT.

Alternative D: Archery Range Development with Parking East of US Hwy 93

Alternative D is the same as Alternative B except that the 12-car asphalt parking lot and an additional asphalt access road to it would be developed on the east side of US Highway 93, north of the park's entrance station. No parking would be provided on the west side of US Highway 93. Archers would utilize the existing trail system and walking tunnel under US Highway 93 to access the archery range. The asphalt access road detailed in Alternative C would still be developed under Alternative D to provide administrative access for archery range and vault latrine maintenance, contingent upon MDT approval.

Summary of Public Comment

FWP received 7 comments via email, and FWP staff reviewed the submissions to identify comments. A comment was defined as a specific issue or impact.

The following is a synopsis of public input received during the comment period and FWP's response to those comments organized by subject matter:

I. Support voiced for specific alternatives listed within the Environmental Assessment

Alternative A (No Action): no comments received in support of Alternative A (No Action)

Preferred Alternative B (Proposed Action):

- Lake County Commissioners appreciate the meeting with your local supervisor, Amy Grout, this past week. We appreciate and support your new concept of providing diversified or varietal camping opportunities for recreationists. Your rustic cabin concept, tent spaces, and yurts are providing the public with opportunities not previously available and may help accommodate the increased demand we are all seeing for recreational opportunities. Your archer opportunities course near Big Arm State Park is providing the public with something not otherwise available, and we hope it is successful. We may have materials that would be helpful if needed and would be willing to work with you as we have on some of the other projects in the County. It is our hope that you will work with us to help facilitate better access to the lake using all avenues available, and the provision of services to accommodate island use should be achievable with the help of our local emergency service providers.
- Flathead Wildlife, Inc. strongly endorses Alternative B in the Big Arm Archery Range EA to develop an archery range with parking west of US Hwy. 93 across from the Big Arm State Park entrance. One of the main tenets in the FWP Bowhunter Education Program is to practice frequently under natural conditions to learn your personal range and to become proficient in making humane kills. Archery can also be a sport in itself, teaching concentration, relaxation and providing outdoor exercise. Unfortunately, many people do not have a safe and suitable location for archery practice. The proposed archery range appears to be a great use of a section of Big Arm State Park that gets low levels of use now. Also, there aren't any comparable facilities in Lake County. Flathead Wildlife thanks FWP for taking the initiative to provide a needed safe archery range and for expanding public recreation opportunities at Big Arm State Park.
- The Montana Chapter of Backcountry Hunters & Anglers represents roughly 3,000 dues-paying sportsmen and women in Montana who value quality recreational opportunities and ethical conduct in the outdoors. Our Montana Chapter includes many members who hunt and recreate in the Flathead Valley. Montana BHA fully supports the proposal to build an archery range in the Big Arm Unit of Flathead State Park. Montana has seen an incredible response to the National Archery in the Schools Program (NASP) and we support expanding regional opportunities for archers to practice and hone their skills. Increasing available target ranges and access to public education events are critical to creating new, ethical hunters and to retaining hunters in the long term. Young or novice archers and seasoned hunters alike will all benefit from increased opportunities

to learn, practice and improve their archery skills.

Furthermore, we applaud your proposed use of Pittman Robertson Act dollars to fund this project. As sportsmen and women, we have a vested interest in seeing the wise and beneficial uses of our excise tax dollars. We look forward to the success of this range and are ready to assist promoting this excellent opportunity for Montana bowhunters.

- The Traditional Bowhunters of Montana represents roughly 250 dues-paying traditional bowhunters in Montana who value quality recreational opportunities and ethical conduct in the outdoors. TBM has many members who hunt and recreate in the Flathead Valley. The Traditional Bowhunters of Montana support the proposal to build an archery range in the Big Arm Unit of Flathead State Park. Montana has seen an incredible response to the National Archery in the Schools Program (NASP), and we support expanding regional opportunities for archers to practice and hone their skills. Increasing available target ranges and access to public education events are critical to creating new, ethical bowhunters and retaining hunters in the long term. Novice archers and seasoned hunters alike will benefit from increased opportunities to learn, practice, and improve their archery skills, especially with traditional tackle. We applaud your proposed use of Pittman Robertson Act dollars to fund this project. As bowhunters, we have a vested interest in seeing the wise and beneficial use of our excise tax dollars. We look forward to the success of this range and are ready to assist in promoting this excellent opportunity for Montana bowhunters.

Alternative C (no acquisition, redesign existing range):

- no comments received in support of Alternative C

II. Opposition voiced against the preferred alternative within the Environmental Assessment

- This archery range is not compatible with visitors' preferred activities in this particular state park; many locals and campers in this park are dedicated hikers who return to this beloved state park year after year and savor the place just the way it is; PLEASE leave this "parcel" alone, so that hikers may continue to enjoy it.
- We who enjoy this wonderful Big Arm state property feel that the park is perfect just the way it is. Please, please leave it alone.
- This location is too close to a major highway and residential areas to be safe; why not find a more remote/isolated place for something like this?

FWP Response: Montana's state parks are intended to offer a variety of recreational opportunities. We believe that the Big Arm Unit of Flathead Lake can offer a public archery range as well as the opportunity for dispersed recreation such as hiking. In addition to hiking trails located throughout the park's 239-acre footprint, the archery range trail will remain available for hiking. FWP evaluated each proposed target location to provide safe backdrops and sight distances to neighboring properties and to US Highway 93. Target locations were specifically chosen to minimize visual impacts to neighboring properties and to ensure safe locations.

III. Concerns raised about design concepts

- Just expressing a concern for those living on the southside of Highway 93 about the proposed Big Arm State Park Archery Range. Wondering if there is a plan in place to reduce the fuel because of the potential added usage? I live in the Early Dawn sub division, so if a fire jumped the highway, it would most likely result in a fire sweeping uphill through the area depending on the weather conditions. So, hopefully, there is a plan in place to reduce the fuel load and even a fire line.

FWP Response: Fuels loading, and associated fire danger do not appear to be significant within the proposed archery range footprint, and fires and smoking would be prohibited at all times. Fireworks are prohibited in all state parks. Park staff are aware of forestry management needs elsewhere with the park, and plan to conduct a park-wide forest condition and fire danger analysis in the near future.

IV. Comments received that are outside the scope of this proposal

- One commentor stated that they believed this proposal was a manifestation of the administration's attempt to escalate the hunting and killing of wildlife, and that they regarded bow hunting as a less effective means than a high-powered rifle to achieve good, ethical shooting that does not cause animal suffering.

FWP Response: FWP is directed by state law to promote and regulate hunting with archery equipment as a legal and ethical means of hunting. The proposed archery range would provide opportunity for all forms of archery, from target shooting to hunting preparation. Practicing technique with and the sighting-in of all weapons prior to the season is a tenet of ethical hunting. The construction of an additional archery range for practice promotes ethical hunting by encouraging and enabling this practice.

DECISION AND RECOMMENDATION

Based upon the Draft EA and the applicable laws, regulations, and policies, I have determined that the proposed action will not have negative effects on the human and physical environments associated with this project. Therefore, I conclude that the EA is the appropriate level of analysis, and the preparation of an Environmental Impact Statement is unnecessary.

By notification of this Decision Notice (DN), the draft EA is hereby made the final EA. FWP will proceed with the development of an archery range at the Big Arm Unit of Flathead Lake State Park, with work expected to begin in 2022.

In accordance with FWP policy, an appeal may be made by any person who has either commented in writing to the department on the proposed project, or who has registered or commented orally at a public meeting held by the department on the proposed project, or who can provide new evidence that would otherwise change the proposed plan. An appeal must be

submitted to the Director of FWP in writing and must be postmarked or received within 30 days of this decision notice. The appeal must describe the basis for the appeal, how the appellant has previously commented to the department or participated in the decision-making process, and how the department can provide relief. The appeal should be mailed to: Director, MT Fish, Wildlife & Parks, PO Box 200701, (1420 East 6th Avenue,) Helena, MT 59620-0701.

for M. Abbrescia / ACTING
James Williams
Region 1 Supervisor
Montana Fish, Wildlife & Parks

12/21/21
Date

Draft
Environmental Assessment

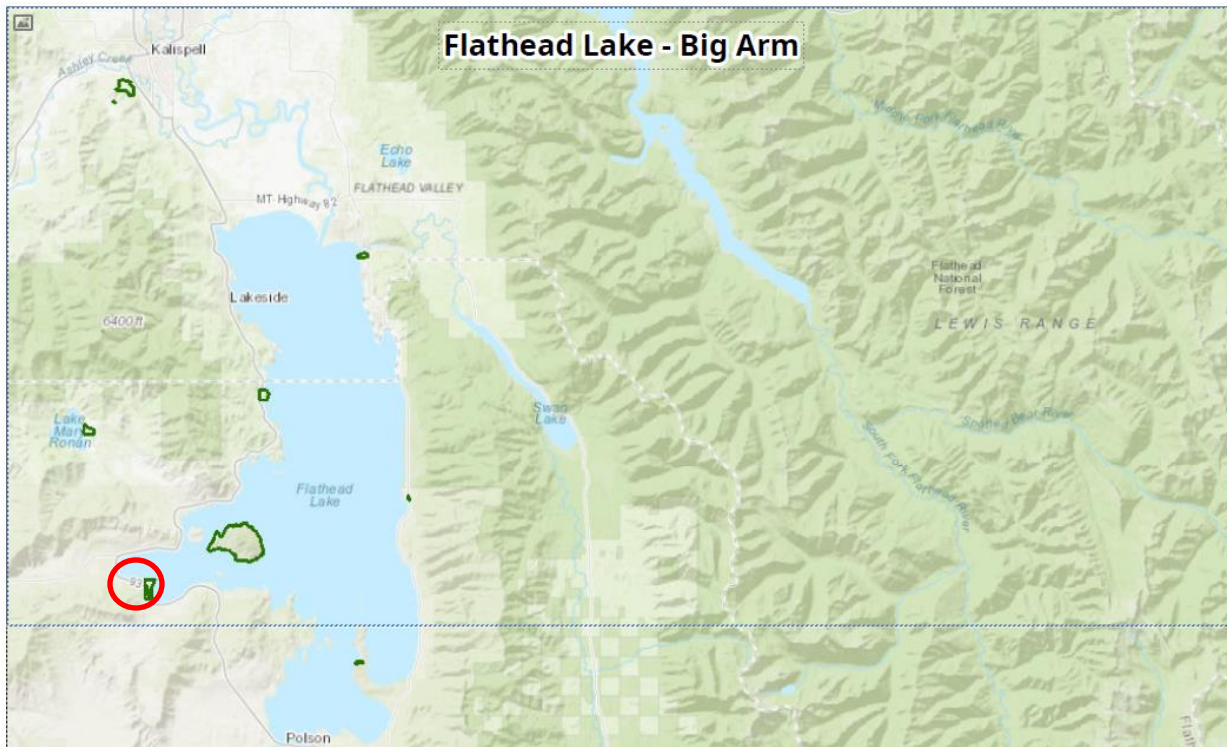
**Flathead Lake State Park – Big Arm Archery
Range Development**



Draft Environmental Assessment MEPA, NEPA, MCA 23-1-110 CHECKLIST

PART I. PROPOSED ACTION DESCRIPTION

1. **Type of proposed state action: Archery Range Development**
 2. **Agency authority for the proposed action:** The 1977 Montana Legislature enacted statute 87-1-209, provides authority for MFWP to acquire, develop, operate, and maintain lands or waters for state parks and outdoor recreation.
 3. **Anticipated Schedule:**
 - a. Estimated Commencement Date: Summer of 2022
 - b. Estimated Completion Date: Summer/Fall of 2022
 - c. Current Status of Project Design (35% complete): Concept drawings have been completed and are included.
2. **Location affected by proposed action (county, range and township – included map):**
Township 24N Range 21W Sections 29 & 32 West of Hwy 93



State Parks (Boundaries)

State Parks (Boundaries)

Printed from fwp.mt.gov
July 8, 2021

1:577,791

This map was generated from the Montana Fish, Wildlife & Parks (FWP) internal FWP Mapper online mapping system. Data layers on this map may depict sensitive species level information. This map is not intended for distribution or use beyond work associated with FWP.



State Parks (Boundaries)

State Parks (Boundaries)

Printed from fwp.mt.gov
July 8, 2021
Scale: 1:36,112
0 0.3 0.6 1.2 mi
0 0.5 1 2 km

This map was generated from the Montana Fish, Wildlife & Parks (FWP) internal FWP Mapper online mapping system. Data layers on this map may depict sensitive species level information. This map is not intended for distribution or use beyond work associated with FWP.

3. Project size -- estimate the number of acres that would be directly affected that are currently:

	<u>i. Acres</u>		<u>Acres</u>
b. (a) Developed:		(d) Floodplain	<u>0</u>
c. Residential	<u>0</u>		
d. Industrial	<u>0</u>	(e) Productive:	
i. (existing shop area)		Irrigated cropland	<u>0</u>
e. (b) Open Space/	<u>25</u>	Dry cropland	<u>0</u>
f. Woodlands/Recreation		Forestry	<u>0</u>
g. (c) Wetlands/Riparian	<u>0</u>	Rangeland	<u>0</u>
i. Areas		Other	<u>0</u>

4. Permits, Funding & Overlapping Jurisdiction.

- a. Permits: permits will be filed at least 2 weeks prior to project start.**
- i. Montana Department of Transportation – Highway Approach Permit
 - ii. Montana Department of Transportation – Highway Encroachment Permit
 - iii. Lake County Dept of Environmental Health – Septic Permit (Vault Latrine)

- iv. Department of Environmental Quality (DEQ) – Sealed Pit Privy Approval (Vault Latrine)
- v. Department of Commerce - State Building Permit (Covered Firing Line)
- vi. DEQ - Storm Water Construction Permit (Contractor will secure this)

- b. Funding:** The total development costs range from \$323,270 to \$413,788 depending on which alternative is selected.
- i. Pittman-Robertson Wildlife Restoration Public Shooting Range Grant 90%
 - ii. Montana Fish, Wildlife & Parks 10%

- c. Other Overlapping or Additional Jurisdictional Responsibilities:**
- i. Department of Natural Resources & Conservation - Lessor

5. Narrative summary of the proposed action:

Montana Fish, Wildlife & Parks (FWP) proposes to develop a public archery range at the Big Arm Unit of Flathead Lake State Park. The archery range would be located on a parcel of Big Arm that is located on the west side of US Highway 93 directly across from the Park's main entrance. This parcel is currently utilized for dispersed hiking. This proposal would take advantage of a Pittman Robertson Act grant, administered by the United States Fish and Wildlife Service, that is aimed at increasing public shooting sport opportunities.

The archery range would include an asphalt parking lot, an entry kiosk with informational and regulatory signage, a precast vault latrine, a 30' x 15' covered shooting line, and lockable storage for archer lessons and practice. An archery range trail with up to twelve shooting stations would also be developed within the project area. One shooting station would include an elevated shooting platform. Shooting stations would be located to ensure safe backdrops and distances from park boundaries.

This public archery range would be a valuable amenity in Lake County and the Polson area, as there are currently no public archery ranges in that area. The nearest public range is located 41 miles north at Lone Pine State Park.

FWP has park staff who are certified National Archery in the Schools Program (NASP) instructors. Thus, the archery range would provide an excellent opportunity for archery programs for children and adults.

Montana has a growing number of schools participating in the National Archery in the Schools Program (NASP). More than 70 schools are enrolled in the program, and northwest Montana is rapidly growing its enrollment with 18 schools/programs enrolled. Since 2019, five new schools in northwest Montana have enrolled in the program due to resources and opportunities provided by FWP and its sites, such as the archery range at Lone Pine State Park. The NASP program can be taught indoors using the school's gymnasium or outdoors. Ranges such as the one in this proposal provide opportunities for NASP programs, trainings, and public education events that

promote NASP and bowhunter education.

6. Description and analysis of reasonable alternatives:

Alternative A: No Action

Under alternative A, no action, FWP would not develop a public archery range at the Big Arm Unit of Flathead Lake State Park. This property would be used primarily for dispersed public recreation as it currently is. The opportunity to provide a public archery range would not be pursued at this location.

Alternative B (Preferred Alternative): Archery Range Development with Parking West of US Hwy 93 Across from Main Park Entrance

Under alternative B, the agency's preferred alternative, FWP would develop a public archery range in the southwest corner of the Big Arm Unit of Flathead Lake State Park. Development would include a 30' x 15' covered shooting line and lockable storage for archer lessons and practice, an entry kiosk with informational and regulatory signage and a precast vault latrine, as depicted in Figure 1.

An archery range trail with up to twelve shooting stations would be developed as depicted in Figure 2. Each shooting station would include up to two targets located to maximize safety. One shooting station would include an elevated shooting platform. A 12-car asphalt parking lot and asphalt access road would also be developed on the west side of US Highway 93 across from the main park entrance to provide public and administrative access, as depicted in Figure 2. This alternative would be contingent upon access approval by the Montana Department of Transportation (MDT).

Alternative C: Archery Range Development with Parking West of US Hwy 93 South of Main Park Entrance

Alternative C is the same as Alternative B except that the access point from US Highway 93 to the 12-car parking lot would be developed further south of the main park entrance, as depicted in Figure 1, along with an asphalt access road. This alternative also would be contingent upon access approval by MDT.

Alternative D: Archery Range Development with Parking East of US Hwy 93

Alternative D is the same as Alternative B except that the 12-car asphalt parking lot and an additional asphalt access road to it would be developed on the east side of US Highway 93, north of the park's entrance station, as depicted in Figure 2. No parking would be provided on the west side of US Highway 93. Archers would utilize the existing trail system and walking tunnel under US Highway 93 to access the archery range. The asphalt access road detailed in Alternative C would still be developed under Alternative D to provide administrative access for archery range and vault latrine maintenance, contingent upon MDT approval.

Figure 1: Map depicting the detailed development of the outdoor shooting range, vault latrine and parking and access roads for Alternatives B and C

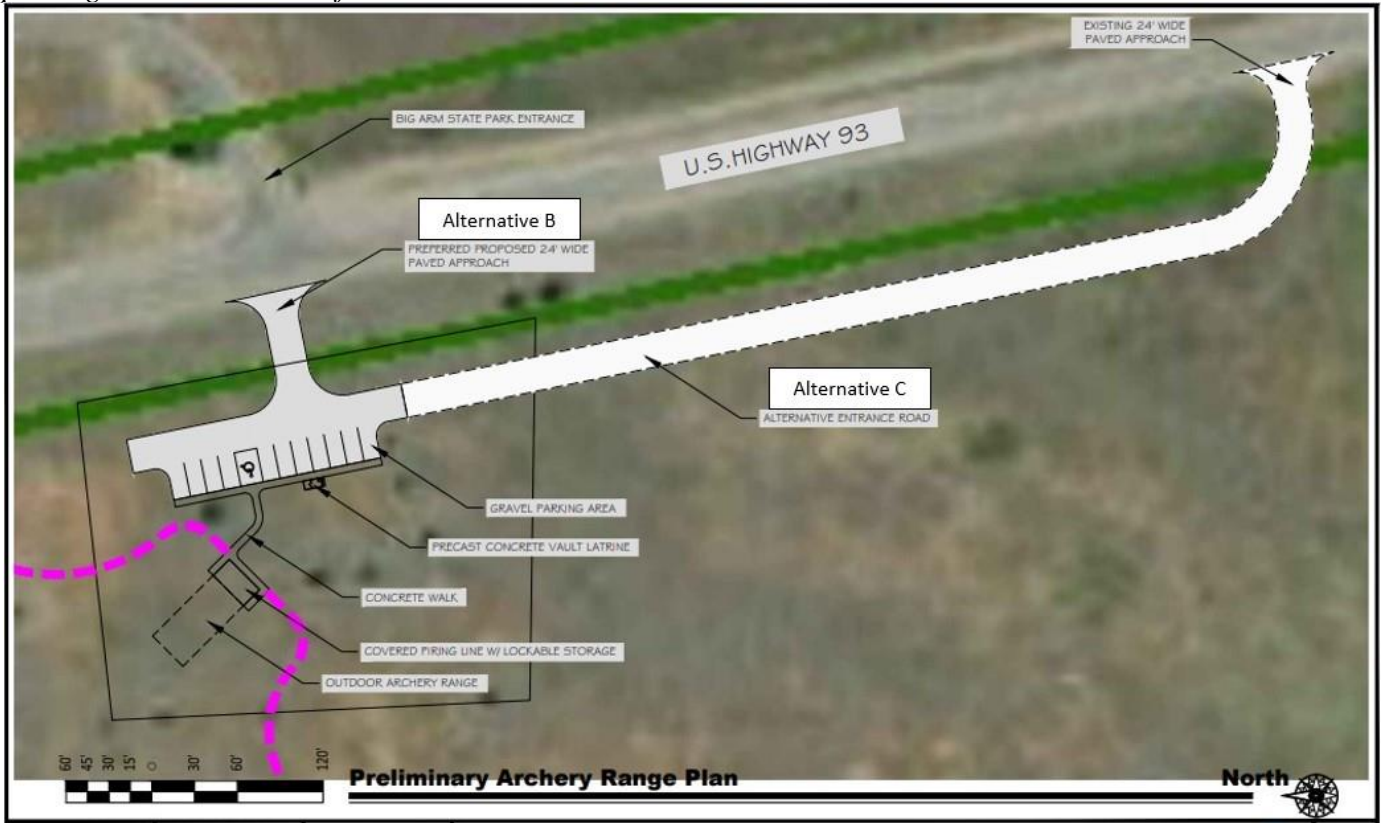
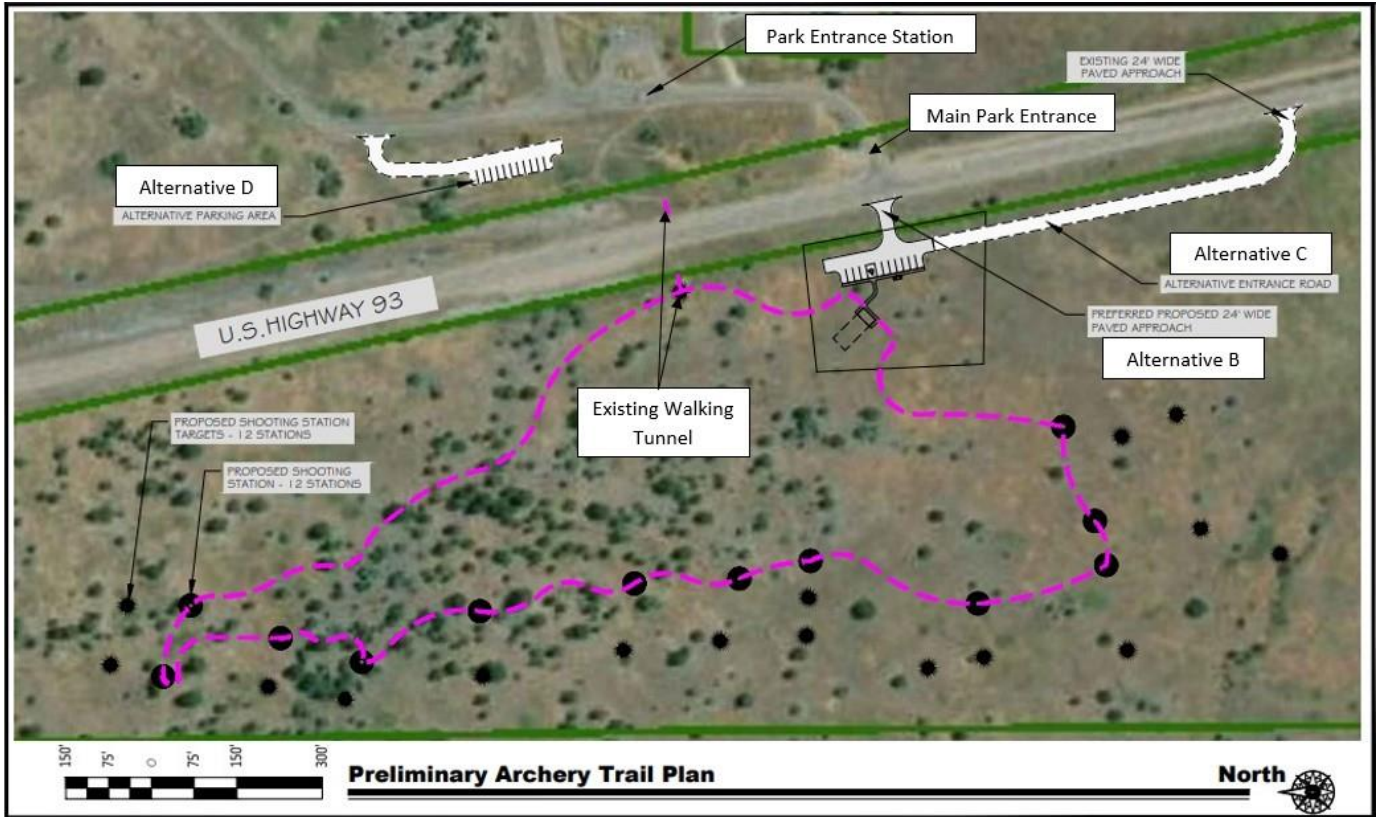


Figure 2: Map Depicting Archery Range Development with Trail Archery Range and Alternative Access Roads



7. Evaluation and listing of mitigation, stipulation, or other control measures enforceable by the agency or another government agency:

- a. The Big Arm Unit of Flathead Lake State Park is perpetually eased from the Department of Natural Resources and Conservation. The easement permits FWP to provide recreational opportunities and facilities compatible with a state park.

In accordance with the Statewide Integrated Noxious Weed Management Plan, the parcel in this proposal would continue to have routine noxious weed control measures implemented. Known noxious weed species include cheatgrass, houndstongue, leafy spurge spotted knapweed, and Canada thistle. Control measures are conducted through contract and/or in-house herbicide application.

The archery range would be governed by the Administrative Rules of Montana (ARM) which specify that the area would only be open from sunrise to sunset. Additionally, ARM 12.8.821 prohibits creating a safety hazard to oneself or others, which would ensure the ability to enforce safe shooting practices. FWP is permitted to post and enforce specific rules for special uses as is done at the public archery range located in Lone Pine

State Park. Those regulations would be posted at this proposed archery range and include the following:

- Follow course in numeric order
- Shoot only at designated targets
- Shoot only from designated shooting stations
- Field point only. Use of broadheads will result in expulsion from the range.
- Yield to other park users
- Beware of your target and beyond

PART II. ENVIRONMENTAL REVIEW CHECKLIST

The No Action Alternative A would not result in any change in management or environmental impacts as the parcel would remain undeveloped and the archery range would not be pursued at this location. Noxious weed control would still occur on the property.

Alternatives B and C would provide parking and administrative access on the west side of US Highway 93. The difference in these two alternatives would be the amount of road to be built, as depicted in Figure 3. Whereas Alternative C would require more road to get visitors to the parking lot. The location of covered shooting line, vault latrine, informational signage and archery range trail would remain the same in both alternatives.

Alternative D would place all parking and access on the east side of the US Highway 93 on the already developed portion of the park. Visitors would utilize the existing hiking trails to access the rest of the proposed development of the outdoor range, vault latrine and walking archery range. Thus, this alternative will have the same impacts as the preferred action except for a different location of the parking lot and access road.

Figure 3: Chart depicting the differences in locations and road lengths for each of the alternatives.

Alternatives	Access Road Location	Access Road Length	Covered Shooting Line Practice Range Location	Parking Lot Location	Latrine Placement
A	N/A	N/A	N/A	N/A	N/A
B (Preferred)	West side of US Hwy 93 and directly across from existing Park Entrance	75 linear feet	West side of US Hwy 93 directly across from existing park entrance	West side of US Hwy 93 directly across from existing park entrance	West side of US Hwy 93 directly across from existing park entrance
C	West side of US Hwy 93 and 600 ft south of existing Park Entrance	750 linear feet	West side of US Hwy 93 directly across from existing park entrance	West side of US Hwy 93 directly across from existing park entrance	West side of US Hwy 93 directly across from existing park entrance
D	East side of US Hwy 93 and 500 ft north of existing Entrance Station	225 linear feet	West side of US Hwy 93 directly across from existing park entrance	East side of US Hwy 93 north of existing Entrance Station	West side of US Hwy 93 directly across from existing park entrance

Evaluation of the impacts of Alternative B the Preferred Action including secondary and cumulative impacts on the Physical and Human Environment.

A. PHYSICAL ENVIRONMENT

1. <u>LAND RESOURCES</u> Will the proposed action result in:	IMPACT					
	Unknown	None	Minor	Potentially Significant	Can Impact Be Mitigated	Comment Index
a. Soil instability or changes in geologic substructure?		X				
b. Disruption, displacement, erosion, compaction, moisture loss, or over-covering of soil, which would reduce productivity or fertility?			X		No	1b
c. Destruction, covering or modification of any unique geologic or physical features?		X				
d. Changes in siltation, deposition or erosion patterns that may modify the channel of a river or stream or the bed or shore of a lake?		X				
e. Exposure of people or property to earthquakes, landslides, ground failure, or other natural hazard?		X				

- 1b. The creation of a 12-car parking lot, access road, vault latrine and outdoor range would disrupt and cover the soil thus resulting in the loss of fertility in those areas. The adjacent areas may be slightly impacted; however, FWP Best Management Practices (BMPs) would be followed during all phases of development and construction. BMPs include any conditions of approval by permitting agencies for work in this area. Typical BMPs include but are not limited to silt fencing, straw or rock wattles, revegetation for erosion. On-site petroleum spill containment tools would be required for pollutant protection. The contractor's stormwater pollution protection plan would be a submittal requirement. Once development is complete, adjacent areas will return to productive soil. The developed areas, i.e. parking lot and road, will no longer be productive; however, the total area impacted is small in comparison to the entire park area.

2. <u>AIR</u> Will the proposed action result in:	IMPACT *					
	Unknown	None	Minor	Potentially Significant	Can Impact Be Mitigated	Comment Index
a. Emission of air pollutants or deterioration of ambient air quality? (Also see 13 (c).)			X		Yes	2a
b. Creation of objectionable odors?			X		Yes	2b
c. Alteration of air movement, moisture, or temperature patterns or any change in climate, either locally or regionally?		X				
d. Adverse effects on vegetation, including crops, due to increased emissions of pollutants?		X				
e. For P-R/D-J projects, will the project result in any discharge, which will conflict with federal or state air quality regulations? (Also see 2a.)		X				

- 2a. The proposed development would include some use of heavy machinery for the building of a parking lot and access road. That construction work would result in minor, temporary emissions of air pollutants and deterioration of ambient air quality. FWP BMPs would be following during all phases of future development and construction. Construction specifications for the project will require the contractor to mitigate dust with BMPs. If water is used to control dust, the DEQ Stormwater Permit would dictate methods for controlling run-off and sediment from entering surface waters
- 2b. It is assumed that portable toilets would be provided during construction, which can create objectionable odors. Portable toilets would be routinely serviced to minimize odors. The vault latrine could cause objectionable odors for the immediate area. Routine maintenance will minimize odors.

3. <u>WATER</u> Will the proposed action result in:	IMPACT					
	Unknown	None	Minor	Potentially Significant	Can Impact Be Mitigated	Comment Index
a. Discharge into surface water or any alteration of surface water quality including but not limited to temperature, dissolved oxygen or turbidity?		X				
b. Changes in drainage patterns or the rate and amount of surface runoff?			X		Yes	3b
c. Alteration of the course or magnitude of floodwater or other flows?		X				
d. Changes in the amount of surface water in any water body or creation of a new water body?		X				
e. Exposure of people or property to water related hazards such as flooding?		X				
f. Changes in the quality of groundwater?		X				
g. Changes in the quantity of groundwater?		X				
h. Increase in risk of contamination of surface or groundwater?		X				
i. Effects on any existing water right or reservation?		X				
j. Effects on other water users as a result of any alteration in surface or groundwater quality?		X				
k. Effects on other users as a result of any alteration in surface or groundwater quantity?		X				
l. For P-R/D-J, will the project affect a designated floodplain? (Also see 3c.)		X				
m. For P-R/D-J, will the project result in any discharge that will affect federal or state water quality regulations? (Also see 3a.)		X				

- 3b. The proposed action involves the construction of an asphalt parking lot and access road. That development could cause some minor changes to drainage patterns and the rate of surface run-off. FWP BMPs would be implemented during all phases of development and construction. Improvement design may include a retention or detention pond sized to take the peak volume from storm runoff and release it at the pre-development rate if needed. This will prevent erosion and provide pollutant protection from any surfaces disturbed or hardened. Stormwater retention/detention ponds are inspected and maintained by staff on a continual basis.

4. <u>VEGETATION</u> Will the proposed action result in?	IMPACT *				Can Impact Be Mitigated*	Comment Index
	Unknown *	None	Minor *	Potentially Significant		
a. Changes in the diversity, productivity or abundance of plant species (including trees, shrubs, grass, crops, and aquatic plants)?			X		Yes	4a.
b. Alteration of a plant community?		X				
c. Adverse effects on any unique, rare, threatened, or endangered species?		X				4c
d. Reduction in acreage or productivity of any agricultural land?		X				
e. Establishment or spread of noxious weeds?		X				
f. ****For P-R/D-J, will the project affect wetlands, or prime and unique farmland?						
g. Other:		X				

- 4a. Development of an access road, parking lot, shooting stations and structures could negatively impact the diversity and abundance of plant species on the property due to the loss of productive land and disturbance during the construction period. FWP would continue to implement noxious weed control which includes herbicide applications and hand pulling as needed to ensure that disturbed areas return to diverse plant species.
- 4c. A search of the Montana Natural Heritage Program website revealed only one species of concern: Columbia Locoweed. The habitat for this species is wetland/riparian and gravelly shoreline. Since the proposed project is slated for the grassland, open Ponderosa pine forest across the highway from the lakeshore property, it is highly unlikely that any of these species or their habitat will be disturbed. See Appendix C.

** 5. FISH/WILDLIFE Will the proposed action result in:	IMPACT *				Can Impact Be Mitigated *	Comment Index
	Unknown *	None	Minor *	Potentially Significant		
a. Deterioration of critical fish or wildlife habitat?		X				
b. Changes in the diversity or abundance of game animals or bird species?			X		No	5b.
c. Changes in the diversity or abundance of nongame species?			X		No	5b.
d. Introduction of new species into an area?		X				
e. Creation of a barrier to the migration or movement of animals?		X				
f. Adverse effects on any unique, rare, threatened, or endangered species?		X				
g. Increase in conditions that stress wildlife populations or limit abundance (including harassment, legal or illegal harvest or other human activity)?			X		Yes	5b.
h. ****For P-R/D-J, will the project be performed in any area in which T&E species are present, and will the project affect any T&E species or their habitat? (Also see 5f.)		X				5h
i. ***For P-R/D-J, will the project introduce or export any species not presently or historically occurring in the receiving location? (Also see 5d.)		X				
j. Other:		X				

5b. The development of visitor amenities could negatively impact the diversity and abundance of animal species on the Property because of increased human presence due to the new amenities available. FWP would provide and enforce visitor use rules to minimize impacts to wildlife.

5h. A search of the Montana Natural Heritage Program Website revealed that the only species of concern for the Big Arm Unit of Flathead Lake State Park was the Westslope Cutthroat Trout, Pygmy Whitefish, and Bull Trout. Since the proposed project is not occurring along the shoreline, these species will not be affected. See Appendix D.

B. HUMAN ENVIRONMENT

6. <u>NOISE/ELECTRICAL EFFECTS</u> Will the proposed action result in:	IMPACT					
	Unknown	None	Minor	Potentially Significant	Can Impact Be Mitigated	Comment Index
a. Increases in existing noise levels?			X		Yes	6a
b. Exposure of people to serve or nuisance noise levels?		X				
c. Creation of electrostatic or electromagnetic effects that could be detrimental to human health or property?		X				
d. Interference with radio or television reception and operation?		X				

6a. Development of the area would cause construction related noise; however, this would be temporary and limited to daytime hours. The development of an archery range would cause a slight increase in existing noise levels resulting from increased visitation. Regulatory signage and staff would provide measures to minimize noise, and a night closure would be in effect. Typically, archery range traffic is dispersed across the course and do not generate a significant amount of noise. The outdoor range will likely be utilized to hold archery classes and thus some noise will be produced; however, this will be limited in duration, only occur during day-time hours and located far from any residences.

7. <u>LAND USE</u> Will the proposed action result in:	IMPACT					
	Unknown	None	Minor	Potentially Significant	Can Impact Be Mitigated	Comment Index
a. Alteration of or interference with the productivity or profitability of the existing land use of an area?		X				
b. Conflicted with a designated natural area or area of unusual scientific or educational importance?		X				
c. Conflict with any existing land use whose presence would constrain or potentially prohibit the proposed action?		X				
d. Adverse effects on or relocation of residences?		X				

8. <u>RISK/HEALTH HAZARDS</u> Will the proposed action result in:	IMPACT					
	Unknown	None	Minor	Potentially Significant	Can Impact Be Mitigated	Comment Index
a. Risk of an explosion or release of hazardous substances (including, but not limited to oil, pesticides, chemicals, or radiation) in the event of an accident or other forms of disruption?			X		No	8a & d
b. Affect an existing emergency response or emergency evacuation plan, or create a need for a new plan?		X				8b
c. Creation of any human health hazard or potential hazard?			X		Yes	8c
d. For P-R/D-I, will any chemical toxicants be used? (Also see 8a)			X			8a & d

8a & d. As dictated by the Statewide Integrated Weed Management Plan, herbicide will be applied to control noxious weeds. Contractors and/or staff will apply herbicide according to the product label and county regulations. There is human risk associated with the use of herbicides to control noxious weeds. Application would be conducted by certified operators and in compliance with the FWP Noxious Weed Treatment Plan.

8b. This parcel is part of the Big Arm Unit of Flathead Lake State Park and as such is included in the Flathead Lake State Park Emergency Response Plan. The plan will be modified and updated with new maps, etc. if this proposal is approved.

8c. There is a potential risk of human injury associated with an archery range from errant arrow flight or archery equipment failure. Shooting station and target placement would minimize this risk by ensuring that adequate backstops and sight distances are incorporated.

9. COMMUNITY IMPACT Will the proposed action result in:	IMPACT					
	Unknown	None	Minor	Potentially Significant	Can Impact Be Mitigated	Comment Index
a. Alteration of the location, distribution, density, or growth rate of the human population of an area?		X				
b. Alteration of the social structure of a community?		X				
c. Alteration of the level or distribution of employment or community or personal income?			X		No	9c
d. Changes in industrial or commercial activity?		X				
e. Increased traffic hazards or effects on existing transportation facilities or patterns of movement of people and goods?			X		No	9e

- 9c. As a result of public scoping and future maintenance plans, FWP hopes to provide an additional staff member to assist in monitoring and maintenance of the archery range. If the position were approved, this staff member would likely be employed during the peak summer season.
- 9e. The archery range would slightly increase visitation to the Big Arm Unit of Flathead Lake State Park. The access for the archery range would be directly off Highway 93 directly across from the main park entrance. Highway access is permitted by the Montana Department of Transportation (MDT) and FWP is currently working with MDT to determine the safest highway access. Our best comparison to potential visitation is archery range at Lone Pine State Park, located 40 miles north of Big Arm. In 2020, 1929 people registered at the voluntary archer sign in log, which likely only represents a portion of total use.

10. <u>PUBLIC SERVICES/TAXES/UTILITIES</u> Will the proposed action result in:	IMPACT					
	Unknown	None	Minor	Potentially Significant	Can Impact Be Mitigated	Comment Index
a. Will the proposed action have an effect upon or result in a need for new or altered governmental services in any of the following areas: fire or police protection, schools, parks/recreational facilities, roads or other public maintenance, water supply, sewer or septic systems, solid waste disposal, health, or other governmental services? If any, specify:		X				
b. Will the proposed action have an effect upon the local or state tax base and revenues?		X				
c. Will the proposed action result in a need for new facilities or substantial alterations of any of the following utilities: electric power, natural gas, other fuel supply or distribution systems, or communications?			X		No	10c
d. Will the proposed action result in increased use of any energy source?		X				
e. Define projected revenue sources		X				
f. Define projected maintenance costs.			X		N/A	10f

10 c. This proposal would result in the need for electrical service at the covered firing line near the parking lot.

10f. It is estimated that this proposal results in \$4170 in annual operation costs. This covers maintenance of facilities, roads, trails, vault pumping, shooting stations, etc. It is estimated that personnel services for the operation of this site would be \$5000.

11. <u>AESTHETICS/RECREATION</u> Will the proposed action result in:	IMPACT					
	Unknown	None	Minor	Potentially Significant	Can Impact Be Mitigated	Comment Index
a. Alteration of any scenic vista or creation of an aesthetically offensive site or effect that is open to public view?			X		Yes	11a
b. Alteration of the aesthetic character of a community or neighborhood?		X				
c. Alteration of the quality or quantity of recreational/tourism opportunities and settings? (Attach Tourism Report.)			X		Yes	11c
d. For P-R/D-J, will any designated or proposed wild or scenic rivers, trails or wilderness areas be impacted? (Also see 11a, 11c.)		X				

- 11a. The parking lot, outdoor range, signage, and vault latrine will be visible from Highway 93 and possibly some private lots or homes to the west of the project area. The proposed developments were intentionally located to minimize visual impacts to neighboring private property. Signage and bow stands on the walking archery range will likely be on treated 4 by 4 posts that are brown in color. The targets are fronts will likely be color images of wildlife with neutral sides and backs that will blend with the surrounding environment. The outdoor covered range will be designed with a style and colors that complement the surrounding environment.
- 11c. According to the Tourism Report in the appendix, “this project has the potential to positively impact the tourism and recreation industry economy if properly maintained.” The report further details that “this project is in alignment with what the Office of Tourism is doing to expand recreational assets and activities in Montana.”

12. <u>CULTURAL/HISTORICAL RESOURCES</u> Will the proposed action result in:	IMPACT					
	Unknown	None	Minor	Potentially Significant	Can Impact Be Mitigated	Comment Index
a. Destruction or alteration of any site, structure or object of prehistoric historic, or paleontological importance?		X				12a,b,c,d
b. Physical change that would affect unique cultural values?		X				12a,b,c,d
c. Effects on existing religious or sacred uses of a site or area?		X				12a,b,c,d
d. For P-R/D-J, will the project affect historic or cultural resources? Attach SHPO letter of clearance. (Also see 12.a.)		X				12a,b,c,d

12 a,b,c,d. In keeping with the Montana Antiquities Act and related regulations, all undertakings within State Parks are assessed for their potential to affect cultural resources. As such, this project was inventoried for cultural resources through pedestrian survey by Montana State Parks's Heritage Program Manager in consultation with the State Historic Preservation Office, and the project will avoid adverse effect to any cultural resources. The process for cultural resource inventory and consultation is outlined in Administrative Rules 12.8.501-12.8.510. FWP also consults with all Tribal Historic Preservation Offices affiliated with each park in accordance with our Tribal Consultation Guidelines.

SIGNIFICANCE CRITERIA

13. SUMMARY EVALUATION OF SIGNIFICANCE Will the proposed action, considered as a whole:	IMPACT					
	Unknown	None	Minor	Potentially Significant	Can Impact Be Mitigated	Comment Index
a. Have impacts that are individually limited, but cumulatively considerable? (A project or program may result in impacts on two or more separate resources that create a significant effect when considered together or in total.)		X				
b. Involve potential risks or adverse effects, which are uncertain but extremely hazardous if they were to occur?		X				
c. Potentially conflict with the substantive requirements of any local, state, or federal law, regulation, standard or formal plan?		X				
d. Establish a precedent or likelihood that future actions with significant environmental impacts will be proposed?		X				
e. Generate substantial debate or controversy about the nature of the impacts that would be created?		X				
f. For P-R/D-J, is the project expected to have organized opposition or generate substantial public controversy? (Also see 13e.)		X				
g. For P-R/D-J, list any federal or state permits required.						

PART III. NARRATIVE EVALUATION AND COMMENT

There are some minor impacts to the physical environment as a result of this project. The temporary, minor impacts include an increase in noise and potential odors, and a decrease in air quality during the construction period. There may be a minor increase in noise levels after development associated with normal use of the archery range. The development of the road, parking lot and outdoor range would increase the potential for run-off. These developments could negatively impact the abundance and diversity of vegetation and wildlife in the immediate area.

There are some impacts to the human environment which include some aesthetic impacts of the developed area, i.e. parking lot, vault latrine, outdoor range and signage, where there was no development before. The proposal may also slightly increase visitation and thus highway use. The nearest public range at Lone Pine State Park had a total of 1929 registered archers in 2020. FWP expects similar usage at this proposed archery range. There is a potential for the addition of a job to assist in monitoring and maintaining the archery range. Additionally, the Montana Office of Tourism believes this will have a positive impact on the tourism and recreation industry economy and provide additional recreational opportunities.

Overall, the impacts identified are minor and there are no anticipated cumulative effects of this proposed project.

PART IV. PUBLIC PARTICIPATION

1. Public involvement:

Public scoping occurred in late September and early October to include visits to developed properties that bordered the parcel identified in this proposal. There are currently three developed properties and contact was made with two of those properties. The homeowners identified safety as a concern and wanted to ensure that targets were in locations that had safe backdrops and safe distances from the property boundary. The presence of minimal staff was also identified as a need to ensure that archers were following rules and behaving in a safe manner.

A scoping notice seeking public input was mailed to developed and undeveloped private parcels bordering the project area. Additionally, notices were sent to the Lake County Board of Commissioners, legislators, and the Polson Chamber of Commerce. The public scoping notice was posted on the FWP webpage. Two responses were received as a result of public scoping. One respondent asked for clarification on the location of the proposed archery range and was pleased that the parcel west of US Highway 93 would be utilized for a public archery range. The second respondent, the Wildlife Program Manager for the Confederated Salish and Kootenai Tribes, was excited about the potential to partner with FWP and provide archery lessons to tribal youth.

The public will be notified of the proposal and provided with information on how to review

and comment on the EA in the following outlets:

- Two public notices in each of these papers: Lake County Leader (Polson), The Daily Inter Lake (Kalispell), Helena Independent Record.
- One statewide press release
- Public notice on the Fish, Wildlife & Parks web page: <https://fwp.mt.gov/news/public-notices>.

Postcards will be mailed to the neighboring landowners and interested parties to ensure their knowledge of the proposed project and the availability of the documents on the FWP website.

This level of public notice and participation is appropriate for a project of this scope having limited impacts, many of which can be mitigated.

2. Duration of comment period: 30 days

The public comment period will extend for (30) thirty days, starting November 9, 2021. Written comments will be accepted until 5:00 p.m. December 10, 2021 and can be mailed or emailed to the addresses below:

Big Arm Archery Range EA
Fish, Wildlife & Parks
490 N. Meridian Rd
Kalispell, MT 59901

or

Stevie.Burton@mt.gov

PART V. EA PREPARATION

- 1. Based on the significance criteria evaluated in this EA, is an EIS required? (YES/NO)?**
NO

If an EIS is not required, explain why the EA is the appropriate level of analysis for this proposed action.

Based on the evaluation of primary, secondary, and cumulative impacts to the physical and human environment under the Montana Environmental Protection Act (MEPA), this environmental review found no significant impacts resulting from the proposed development of the road, parking area, vault latrine, covered practice range and archery course. In determining the significant impacts, FWP assessed the duration, severity, geographic extent and frequency of the impact; the probability that the impact would occur or reasonable assurance that the impact would not occur; growth-inducing or growth-inhibiting aspects of the project; the importance to the state and to the society of the environmental resource or value affected and precedence that would be set as a result of the proposed action that

would commit FWP to further actions; and possible conflicts with local, federal or state laws. Therefore, an EA is the appropriate level of review and an EIS is not required.

2. Person(s) responsible for preparing the EA:

Amy Grout
Flathead Lake State Park Manager
8600 MT Hwy 35
Bigfork, MT 59911
(406) 837-3041 ext. 3
AGrout@mt.gov

Dave Landstrom
Region One Park Manager
490 North Meridian Road
Kalispell, MT 59901
(406) 751-4574
Dlandstrom@mt.gov

3. List of agencies or offices consulted during preparation of the EA:

FWP - Wildlife Division, Design and Construction, Heritage Program Manager
Montana Office of Tourism
Montana Department of Transportation
US Fish & Wildlife Service
State Historic Preservation Office
CSKT Tribal Historic Preservation Office

APPENDIX A
23-1-110 MCA
PROJECT QUALIFICATION CHECKLIST

Date: October 1, 2021

Person Reviewing: Amy Grout

Project Location: Township 24N Range 21W Sections 29 & 32 West of Hwy 93

Description of Proposed Work:

FWP would develop a public archery range in the southwest corner of the Big Arm Unit of Flathead Lake State Park. The range would provide up to 12 shooting stations, a 30'x15' covered shooting station with storage for archer lessons and practice and a precast vault latrine. Each shooting station would include up to two targets located to maximize safety. One shooting station would include an elevated shooting platform. A 12-car parking lot and access road would be developed on the west side of Highway 93 to provide public and administrative access.

The following checklist is intended to be a guide for determining whether a proposed development or improvement is of enough significance to fall under 23-1-110 rules. (Please check all that apply and comment as necessary.)

- [X] A. New roadway or trail built over undisturbed land?
Comments: *A new road and trail would be built on previously undeveloped land.*
- [X] B. New building construction (buildings <100 sf and vault latrines exempt)?
Comments: *An outdoor range with covered firing lines and lockable storage would be constructed.*
- [X] C. Any excavation of 20 c.y. or greater?
Comments: *The development of the road, parking lot, and outdoor range may result in the excavation of 20 c.y. or more.*
- [X] D. New parking lots built over undisturbed land or expansion of existing lot that increases parking capacity by 25% or more?
Comments: *A new asphalt parking lot with a capacity of approximately 12 vehicles would be developed in a previously undeveloped parcel or area.*
- [] E. Any new shoreline alteration that exceeds a doublewide boat ramp or handicapped fishing station?
Comments:
- [] F. Any new construction into lakes, reservoirs, or streams?
Comments:

- [] G. Any new construction in an area with National Registry quality cultural artifacts (as determined by State Historical Preservation Office)?
Comments:
- [] H. Any new above ground utility lines?
Comments:
- [] I. Any increase or decrease in campsites of 25% or more of an existing number of campsites?
Comments:
- [] J. Proposed project significantly changes the existing features or use pattern; including effects of a series of individual projects?
Comments:

If any of the above are checked, 23-1-110 MCA rules apply to this proposed work and should be documented on the MEPA/HB495 CHECKLIST. Refer to MEPA/HB495 Cross Reference Summary for further assistance.

APPENDIX B

TOURISM REPORT

MONTANA ENVIRONMENTAL POLICY ACT (MEPA) & MCA 23-1-110

The Montana Department of Fish, Wildlife and Parks has initiated the review process as mandated by MCA 23-1-110 and the Montana Environmental Policy Act in its consideration of the project described below. As part of the review process, input and comments are being solicited. Please complete the project name and project description portions and submit this form to:

Jan Stoddard
Montana Office of Tourism
301 S. Park Ave.
Helena, MT 59601

Project Name:

Flathead Lake State Park - Big Arm Archery Range Development

Project Description:

Montana State Parks proposes to develop an archery range at the Big Arm Unit of Flathead Lake State Park. The archery range would be located on the west parcel across Highway 93 from the main existing developed park and campground. This parcel is not currently being utilized for any other purposes and is only occasionally utilized for dispersed off trail hiking. The archery range would include a asphalt parking area accessed directly off Highway 93; a practice range with a covered shooting area, side and end shooting curtains, and a built-in storage area; a vault latrine; and an archery course with twelve shooting stations and fourteen targets. There are currently no public archery ranges in the Mission Valley. The nearest public range is 41 miles north in the Flathead Valley at Lone Pine State Park. The archery range would be open year-round, but roads and trails would not be maintained for winter use.

1. Would this site development project have an impact on the tourism economy?

NO

YES

If YES, briefly describe:

As described, this project has the potential to positively impact the tourism and recreation industry economy if properly maintained. This project is in alignment with what the Office of

Tourism is doing to expand recreational assets and activities in Montana. Despite the pandemic, Montana's 11.1 million non-resident visitors in 2020 spent over \$3.15 billion in the state according to a 2021 report from the University of Montana's Institute for Tourism and Recreation Research (ITRR).

Additionally, Montana residents use and value state parks. A 2018 ITRR study confirmed that over half of Montana residents 18 and older use Montana State Parks at least once a year and that the importance of having state parks is agreed upon by all residents. In 2020,

there was a record 3.4 million Montana resident and non-resident visitors to Montana state

parks, an increase of 30% over 2019.

2. Does this impending improvement alter the quality or quantity of recreation/tourism opportunities and settings?

NO

YES

If YES, briefly describe:

This project has the potential to improve quality and quantity of tourism and recreational opportunities. The addition of an archery with a asphalt parking area; a practice range with a covered shooting area, side and end shooting curtains, and a built-in storage area; a vault latrine; and an archery course are a signification addition to the usability and long-term sustainability of visitor assets for outdoor recreation, including non-resident visitors. With these improvements, we are assuming the agency has determined it has necessary funding for the on-going operations and maintenance once this project is complete.

Signature Jan Stoddard Date 9/10/21

APPENDIX C

Montana Natural Heritage - SOC Report Plant Species of Concern

Species List Last Updated 02/19/2021



A program of the Montana State Library's
Natural Resource Information System
operated by the University of Montana.

1 Species of Concern

Filtered by the following criteria:

FWP State Park = Flathead Lake/Big Arm (based on mapped Species Occurrences)

Expand All | Collapse All

Introduction

Species of Concern

Species of Concern
1 Species
Filtered by the following criteria:
FWP State Park = Flathead Lake/Big Arm (based on mapped Species Occurrences)

FLOWERING PLANTS - DICOTS (MAGNOLIOPSIDA)							1 SPECIES		
FWP STATE PARK = FLATHEAD LAKE/BIG ARM (based on mapped Species Occurrences)									
SCIENTIFIC NAME COMMON NAME TAXA SORT	OTHER NAMES	FAMILY (SCIENTIFIC) FAMILY (COMMON)	GLOBAL RANK	STATE RANK	USFWS	USFS	BLM	MNPS THREAT CATEGORY	HABITAT
<i>Oxytropis campestris</i> var. <i>columbiana</i> Columbia Looweed	<i>Oxytropis columbiana</i>	Fabaceae Pea Family	G5T2	S1				1	Wetland/Riparian, Gravelly shoreline
<p>Species Occurrences verified in these Counties: Lake State Rank Reason: Originally known in Montana from six occurrences all around Flathead Lake. However, two of the occurrences are now extirpated. Private lands, which are subject to development in the area, play a vital role in maintaining viable populations of this plant in Montana.</p>									

Potential Species of Concern

Potential Species of Concern
0 Species
Filtered by the following criteria:
FWP State Park = Flathead Lake/Big Arm (based on mapped Species Occurrences)

Special Status Species

Special Status Species
0 Species
Filtered by the following criteria:
FWP State Park = Flathead Lake/Big Arm (based on mapped Species Occurrences)

Additions To Statewide List

Species Removed From Statewide List

Citation for data on this website:
Montana Plant Species of Concern Report. Montana Natural Heritage Program. Retrieved on 10/5/2021, from mnhp.org/SpeciesOfConcern/About



APPENDIX D

United States Department of the Interior



FISH AND WILDLIFE SERVICE
Montana Ecological Services
Field Office 585 Shephard
Way, Suite 1
Helena, MT 59601-6287

Phone: (406) 449-5225 Fax: (406) 449-5339

In Reply Refer To:
Consultation Code: 06E11000-2022-SLI-0042Event Code:
06E11000-2022-E-00105
Project Name: Big Arm SP Archery Range Development

October 27, 2021

Subject: List of threatened and endangered species that may occur in your proposed project location or may be affected by your proposed project

To Whom It May Concern:

The enclosed species list identifies threatened, endangered, proposed and candidate species, as well as proposed and final designated critical habitat, that may occur within the boundary of your proposed project and/or may be affected by your proposed project. The species list fulfills the requirements of the U.S. Fish and Wildlife Service (Service) under section 7(c) of the Endangered Species Act (Act) of 1973, as amended (16 U.S.C. 1531 *et seq.*).

New information based on updated surveys, changes in the abundance and distribution of species, changed habitat conditions, or other factors could change this list. Please feel free to contact us if you need more current information or assistance regarding the potential impacts to federally proposed, listed, and candidate species and federally designated and proposed critical habitat. Please note that under 50 CFR 402.12(e) of the regulations implementing section 7 of the Act, the accuracy of this species list should be verified after 90 days. This verification can be completed formally or informally as desired. The Service recommends that verification be completed by visiting the ECOS-IPaC website at regular intervals during project planning and implementation for updates to species lists and information. An updated list may be requested through the ECOS-IPaC system by completing the same process used to receive the enclosed list.

The purpose of the Act is to provide a means whereby threatened and endangered species and the ecosystems upon which they depend may be conserved. Under sections 7(a)(1) and 7(a)(2) of the Act and its implementing regulations (50 CFR 402 *et seq.*), Federal agencies are required to utilize their authorities to carry out programs for the conservation of threatened and endangered species and to determine whether projects may affect threatened and endangered species and/or designated critical habitat.

A Biological Assessment is required for construction projects (or other undertakings having similar physical impacts) that are major Federal actions significantly affecting the quality of the human environment as defined in the National Environmental Policy Act (42 U.S.C. 4332(2))

(c). For projects other than major construction activities, the Service suggests that a biological evaluation similar to a Biological Assessment be prepared to determine whether the project may affect listed or proposed species and/or designated or proposed critical habitat. Recommended contents of a Biological Assessment are described at 50 CFR 402.12.

If a Federal agency determines, based on the Biological Assessment or biological evaluation, that listed species and/or designated critical habitat may be affected by the proposed project, the agency is required to consult with the Service pursuant to 50 CFR 402. In addition, the Service recommends that candidate species, proposed species and proposed critical habitat be addressed within the consultation. More information on the regulations and procedures for section 7 consultation, including the role of permit or license applicants, can be found in the "Endangered Species Consultation Handbook" at:

<http://www.fws.gov/endangered/esa-library/pdf/TOC-GLOS.PDF>

Please be aware that bald and golden eagles are protected under the Bald and Golden Eagle Protection Act (16 U.S.C. 668 *et seq.*), and projects affecting these species may require development of an eagle conservation plan (http://www.fws.gov/windenergy/eagle_guidance.html). Additionally, wind energy projects should follow the wind energy guidelines (<http://www.fws.gov/windenergy/>) for minimizing impacts to migratory birds and bats.

Guidance for minimizing impacts to migratory birds for projects including communications towers (e.g., cellular, digital television, radio, and emergency broadcast) can be found at:

<http://www.fws.gov/migratorybirds/CurrentBirdIssues/Hazards/towers/towers.htm>; <http://www.towerkill.com>; and <http://www.fws.gov/migratorybirds/CurrentBirdIssues/Hazards/towers/comtow.html>.

We appreciate your concern for threatened and endangered species. The Service encourages Federal agencies to include conservation of threatened and endangered species into their project planning to further the purposes of the Act. Please include the Consultation Tracking Number in the header of this letter with any request for consultation or correspondence about your project that you submit to our office.

Attachment(s):

- Official Species List

Official Species List

This list is provided pursuant to Section 7 of the Endangered Species Act, and fulfills the requirement for Federal agencies to "request of the Secretary of the Interior information whether any species which is listed or proposed to be listed may be present in the area of a proposed action".

This species list is provided by:

Montana Ecological Services Field Office

585 Shephard Way, Suite 1
Helena, MT 59601-6287
(406) 449-5225

Project Summary

Consultation Code: 06E11000-2022-SLI-0042 Event Code:

Some(06E11000-2022-E-00105)

Project Name: Big Arm SP Archery Range DevelopmentProject

Type: Federal Grant / Loan Related

Project Description: FWP proposes to develop a 3-D, multi-station archery range on this 57-acre site.

Project Location:

Approximate location of the project can be viewed in Google Maps: <https://www.google.com/maps/@47.80796655,-114.31684337668578,14z>



Counties: Lake County, Montana

Endangered Species Act Species

There is a total of 5 threatened, endangered, or candidate species on this species list.

Species on this list should be considered in an effects analysis for your project and could include species that exist in another geographic area. For example, certain fish may appear on the species list because a project could affect downstream species.

IPaC does not display listed species or critical habitats under the sole jurisdiction of NOAA Fisheries¹, as USFWS does not have the authority to speak on behalf of NOAA and the Department of Commerce.

See the "Critical habitats" section below for those critical habitats that lie wholly or partially within your project area under this office's jurisdiction. Please contact the designated FWS office if you have questions.

1. [NOAA Fisheries](#), also known as the National Marine Fisheries Service (NMFS), is an office of the National Oceanic and Atmospheric Administration within the Department of Commerce.

Mammals

NAME	STATUS
Canada Lynx <i>Lynx canadensis</i> Population: Wherever Found in Contiguous U.S. There is final critical habitat for this species. The location of the critical habitat is not available. Species profile: https://ecos.fws.gov/ecp/species/3652	Threatened
Grizzly Bear <i>Ursus arctos horribilis</i> Population: U.S.A., conterminous (lower 48) States, except where listed as an experimental population There is proposed critical habitat for this species. The location of the critical habitat is not available. Species profile: https://ecos.fws.gov/ecp/species/7642	Threatened

Birds

NAME	STATUS
Yellow-billed Cuckoo <i>Coccyzus americanus</i> Population: Western U.S. DPS There is final critical habitat for this species. The location of the critical habitat is not available. Species profile: https://ecos.fws.gov/ecp/species/3911	Threatened

Insects

NAME	STATUS
Monarch Butterfly <i>Danaus plexippus</i> No critical habitat has been designated for this species. Species profile: https://ecos.fws.gov/ecp/species/9743	Candidate

Flowering Plants

NAME	STATUS
Spalding's Catchfly <i>Silene spaldingii</i> There is proposed critical habitat for this species. The location of the critical habitat is not available. Species profile: https://ecos.fws.gov/ecp/species/3681	Threatened

Critical habitats

THERE ARE NO CRITICAL HABITATS WITHIN YOUR PROJECT AREA UNDER THIS OFFICE'S JURISDICTION.

APPENDIX E

Montana Natural Heritage - SOC Report Animal Species of Concern

Species List Last Updated 02/19/2021



A program of the Montana State Library's
Natural Resource Information System
operated by the University of Montana.

3 Species of Concern

Filtered by the following criteria:

FWP State Park = Flathead Lake/Big Arm (based on mapped Species Occurrences)

Expand All | Collapse All

Introduction

Species of Concern

Species of Concern

3 Species

Filtered by the following criteria:

FWP State Park = Flathead Lake/Big Arm (based on mapped Species Occurrences)

FISH (ACTINOPTERYGII)										
FWP STATE PARK = FLATHEAD LAKE/BIG ARM (based on mapped Species Occurrences)										
SCIENTIFIC NAME COMMON NAME TAXA SORT	FAMILY (SCIENTIFIC) FAMILY (COMMON)	GLOBAL RANK	STATE RANK	USFWS	USFS	BLM	FWP SWAP	% OF GLOBAL BREEDING RANGE IN MT	% OF MT THAT IS BREEDING RANGE	HABITAT
<i>Oncorhynchus clarkii</i> lewisi Westlope Cutthroat Trout	Salmonidae Trout	G5T4	S2		Sensitive - Known on Forests (BD, BRT, CG, HLC, KOOT, LOLO)	SENSITIVE	SGCN2		34%	Mountain streams, rivers, lakes
Species Occurrences verified in these Counties: Beaverhead, Broadwater, Cascade, Chouteau, Deer Lodge, Fergus, Flathead, Gallatin, Glacier, Granite, Jefferson, Judith Basin, Lake, Lewis and Clark, Lincoln, Madison, Meagher, Mineral, Missoula, Park, Pondera, Powell, Ravalli, Sanders, Silver Bow, Teton, Wheatland										
State Rank Reason: The Westlope Cutthroat trout is currently ranked "S2" in Montana because it is at risk due to very limited and/or potentially declining population numbers, range and/or habitat, making it vulnerable to extinction in the state.										
<i>Prosopium coulterii</i> Pygmy Whitefish	Salmonidae Trout	G5	S3				SGCN3, SGIN	1%	1%	Deep mountain lakes and tributaries
Species Occurrences verified in these Counties: Flathead, Lake, Lincoln, Missoula										
State Rank Reason: The Pygmy Whitefish is currently listed as an "S3" species of concern in Montana because they are potentially at risk because of limited and/or declining numbers, range and/or habitat, even though it may be abundant in some areas.										
<i>Salvelinus confluentus</i> Bull Trout	Salmonidae Trout	G5	S2	LT; CH	Threatened, Critical Habitat on Forests (BD, BRT, HLC, KOOT, LOLO)	THREATENED	SGCN2	5%	18%	Mountain streams, rivers, lakes
Species Occurrences verified in these Counties: Deer Lodge, Flathead, Glacier, Granite, Lake, Lewis and Clark, Lincoln, Mineral, Missoula, Powell, Ravalli, Sanders										

Potential Species of Concern

Potential Species of Concern

0 Species

Filtered by the following criteria:

FWP State Park = Flathead Lake/Big Arm (based on mapped Species Occurrences)

Special Status Species

Special Status Species

0 Species

Filtered by the following criteria:

FWP State Park = Flathead Lake/Big Arm (based on mapped Species Occurrences)

Additions To Statewide List

APPENDIX F



STATEPARKS.MT.GOV

MONTANA FWP

THE **OUTSIDE** IS IN US ALL.

October 4, 2021

Laura Evilsizer
State Historic Preservation Office
1301 E. Lockey St.
P.O. Box 201202
Helena, MT 59620-1201

RECEIVED
OCT 06 2021
BY: SHPO
Laura
2021100607
MONTANA STATE PARKS
DATE 10/14/21 SIGNED Laura Evilsizer

RE: Cultural Resource Inventory Report for an Archery Range, Big Arm State Park, Lake County, Montana

Dear Laura,

This letter initiates consultation between Montana Fish, Wildlife and Parks and the SHPO office on the proposed construction of a new archery range and associated facilities within Big Arm State Park, in Sections 29 and 32 of Township 24 North, Range 21 West.

Previous inventories have not recorded any cultural resources within the APE for this project, and the current pedestrian inventory also did not record any cultural resources. Therefore my recommendation for this project is No Historic Properties Affected. Further details are outlined in the attached report. I have also attached the CRABS form and a zipped GIS shapefile of the APE for the project.

I am submitting these files to you via filetransfer and hard copy on October 4, 2021. The same consultation packet has been provided to the CSKT THPO, as well.

Thank you very much for your review and consultation.

Rachel Reckin, Ph.D.

Heritage Program Manager
Montana State Parks
P.O. Box 200701
Helena, MT 59620-0701
(406)-444-3756
rachel.reckin@mt.gov

CC: Amy Grout, Park Manager
Dave Landstrom, Regional Park Manager