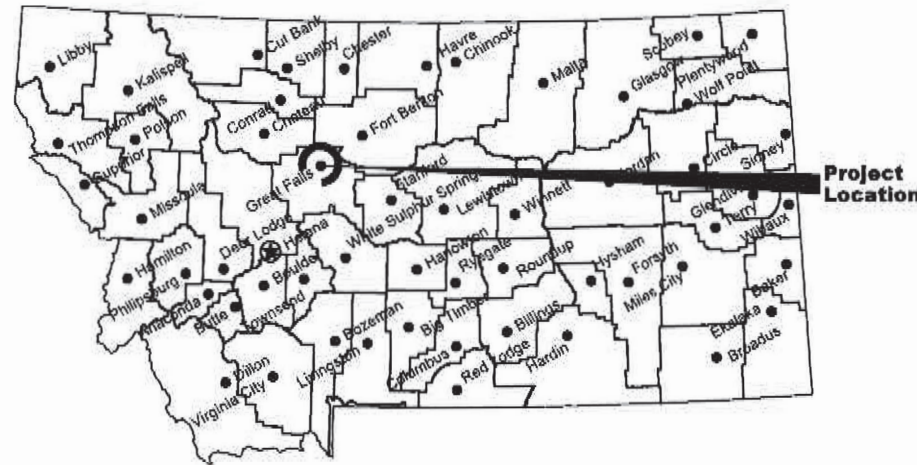


Montana Fish, Wildlife & Parks

Giant Springs State Park Lewis and Clark Overlook Paving

Great Falls , Cascade County, Montana

FWP Project No. - 7236143



Location Map

No Scale



Vicinity Map

No Scale



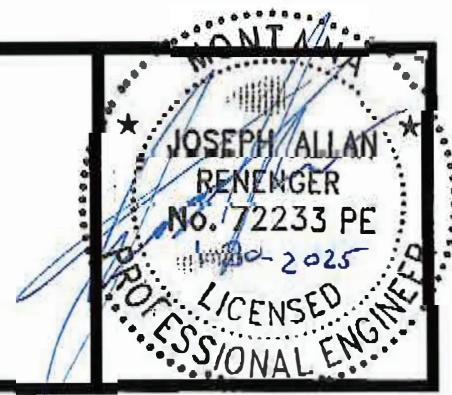
**MONTANA FISH, WILDLIFE AND PARKS
DESIGN AND CONSTRUCTION**

MAILING ADDRESS: PO BOX 200701
HELENA, MT 59620-0701
TEL 406.841.4000
FAX 406.841.4004
<https://fwp.mt.gov/aboutfwp/design-and-construction>

PHYSICAL ADDRESS: 1522 9th AVENUE
HELENA, MT 59601

DRAWING INDEX

Sheet	Description
1	Cover
2	Details & Rainbow Overlook
3	Paving site Plan
4	Grading Plan
5	Pavement Marking plan



K.Harrington 1/24/25
DRAWN BY: DATE:

J. RENENGER 2/3/25
APPROVED BY: DATE:

APPROVED BY: DATE:



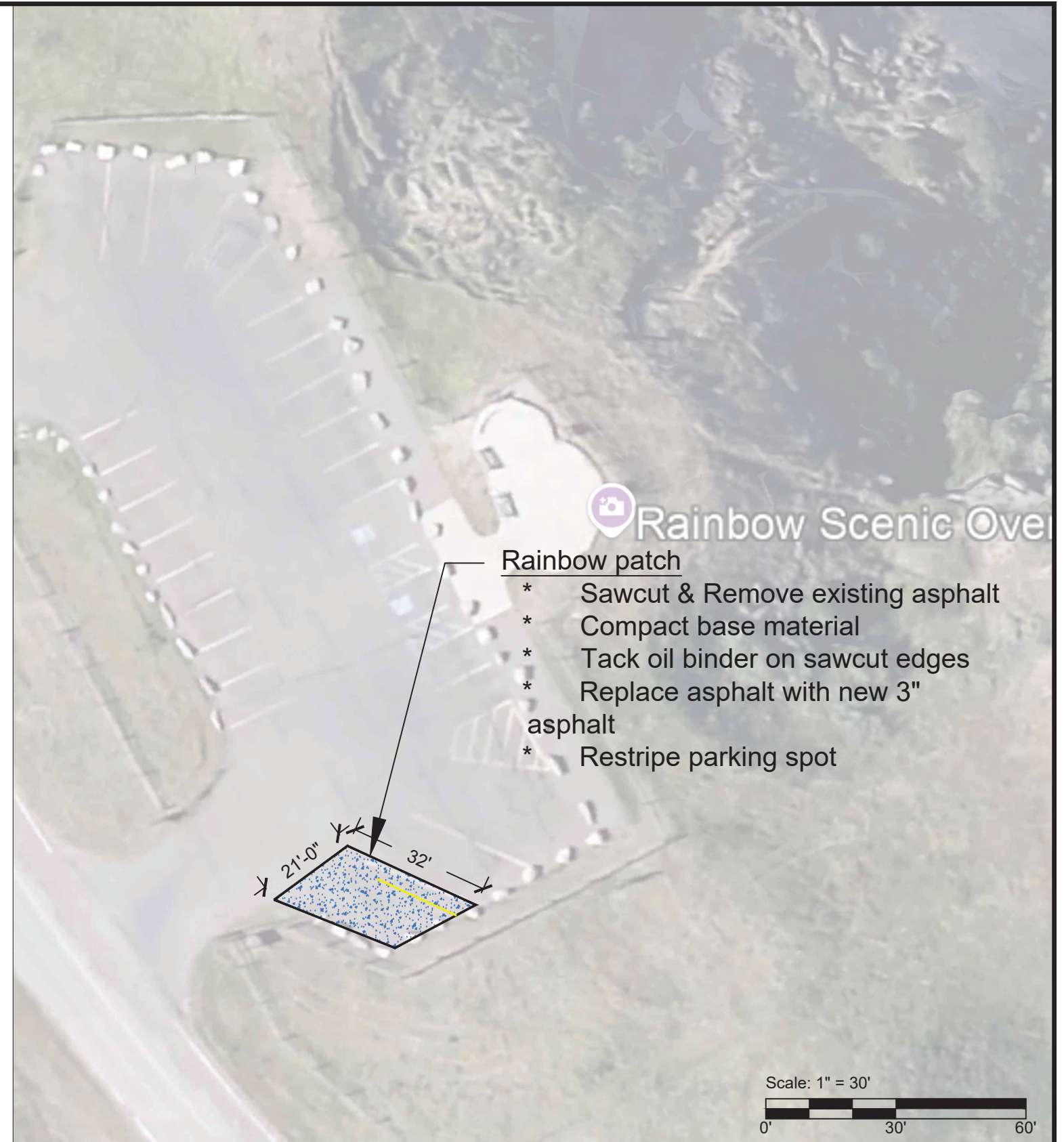
**MONTANA FISH,
WILDLIFE & PARKS**

Lewis and Clark Overlook Paving
Cover Sheet

SHEET: 1 of 5

GENERAL NOTES:

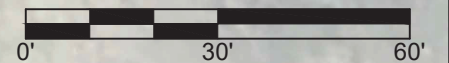
1. NOTIFY ALL UTILITY COMPANIES IN WRITING AND BE RESPONSIBLE FOR SECURING THE EXACT LOCATION OF ALL EXISTING UTILITIES BEFORE BEGINNING EXCAVATION.
2. UNLESS SPECIFICALLY IDENTIFIED OTHERWISE ON THE PLAN SHEETS, ALL POWER, TELEPHONE AND OTHER UTILITY POLES OR GUY WIRES WHICH INTERFERE WITH THE CONSTRUCTION SHALL BE REMOVED OR RELOCATED BY THE UTILITY COMPANY OR TEMPORARY POWER POLE SHORING SHALL BE INSTALLED BY THE CONTRACTOR DURING CONSTRUCTION. CONTRACTOR TO COORDINATE WITH UTILITY COMPANY PRIOR TO CONSTRUCTION.
3. OBTAIN ALL NECESSARY PERMITS UNLESS OTHERWISE IDENTIFIED IN THE SPECIFICATIONS.
4. REMOVE AND REINSTALL ANY OBSTACLE (FENCES, LANDSCAPE FEATURES, RECREATIONAL EQUIPMENT, PARKING BLOCKS, ETC.) THAT INTERFERE WITH CONSTRUCTION UPON APPROVAL OF PROJECT ENGINEER UNLESS OTHERWISE NOTED ON PLANS.
5. ALL CONSTRUCTION SHALL CONFORM TO MPWSS (LATEST EDITION), AND MODIFICATIONS TO MPWSS DESCRIBED IN THE SPECIFICATIONS.
6. PROVIDE ALL TRAFFIC CONTROL IN ACCORDANCE WITH CURRENT M.U.T.C.D. AND AMERICANS WITH DISABILITIES ACT (ADA) STANDARDS AND CONTRACT REQUIREMENTS.
7. FISH, WILDLIFE, AND PARKS OFFICE AND PROJECT MANAGER SHALL BE NOTIFIED A MINIMUM OF 48 HOURS PRIOR TO BEGINNING ANY WORK.
8. EXISTING UTILITIES SHOWN ARE BASED ON FIELD SURVEY DATA AND AVAILABLE AS-BUILT DRAWING INFORMATION. IT IS CONTRACTOR'S RESPONSIBILITY TO VERIFY EXACT LOCATION AND DEPTH.
9. PROTECT ALL EXISTING SURVEY MONUMENTATION UNLESS OTHERWISE NOTED ON PLANS. IT IS THE CONTRACTOR'S RESPONSIBILITY TO REPLACE ANY DISTURBED MONUMENTATION.
10. ALL CULVERTS AND DRAINAGE DITCHES AFFECTED BY CONSTRUCTION SHALL BE RESTORED TO ORIGINAL CONDITION.
11. CONTRACTOR SHALL PROCURE AND COORDINATE STORAGE AND SPOIL PILE SITES INCIDENTAL TO THE CONTRACT. SUBMIT PROPOSED SITE INFORMATION TO THE ENGINEER AND THE OWNER. ALL STOCKPILE MUST BE CONTAINED WITH SILT FENCE.
12. ALL TEMPORARY EROSION AND SEDIMENT CONTROL DEVICES SHALL BE IN PLACE PRIOR TO BEGINNING CONSTRUCTION. THE TEMPORARY EROSION AND SEDIMENT CONTROL DEVICES SHALL BE INSTALLED, MONITORED, AND MAINTAINED BY THE CONTRACTOR UNTIL FINAL VEGETATIVE COVERAGE HAS BEEN ESTABLISHED AND ACCEPTED BY THE OWNER.
13. REPAIR/REPLACE ANY UTILITY (SEWER, STORM DRAIN, GAS, TELEPHONE, ETC.) DAMAGED BY CONSTRUCTION UNLESS OTHERWISE NOTED ON PLANS. REPAIR/REPLACE SHALL BE IN ACCORDANCE WITH ALL FEDERAL, STATE, AND LOCAL CODES AND AFFECTED UTILITY COMPANY STANDARDS. PAYMENT SHALL BE INCIDENTAL TO OTHER WORK.
14. CONTRACTOR IS RESPONSIBLE TO REMAIN WITHIN THE CONSTRUCTION LIMITS AND FOR RESTORATION OF DISTURBED AREAS IN ACCORDANCE WITH THE PLANS AND SPECIFICATIONS.
15. ALL DISTURBED AREAS TO BE RECLAIMED AND RESEEDED WITH A NATIVE SEED MIX AFTER CONSTRUCTION. CONTRACTOR TO SALVAGE TOPSOIL FROM EXCAVATED AREAS AND REUSE IF POSSIBLE ON TOP OF COMPACTED BACKFILL AREAS.
16. IT IS THE CONTRACTOR'S RESPONSIBILITY TO MANAGE ACTIVE STORMWATER RUNOFF DURING THE CONSTRUCTION PERIOD. CONTRACTOR TO DEVELOP A PLAN TO BE REVIEWED AS A SUBMITTAL BEFORE CONSTRUCTION BEGINS.



Rainbow patch

- * Sawcut & Remove existing asphalt
- * Compact base material
- * Tack oil binder on sawcut edges
- * Replace asphalt with new 3" asphalt
- * Restripe parking spot

Scale: 1" = 30'



RAINBOW OVERLOOK REPAIR



CONSTRUCTION NOTES

PLAN VIEW

K.Harrington 1/24/25
DRAWN BY: DATE:

J. RENENGER 2/3/25
APPROVED BY: DATE:

APPROVED BY: DATE:

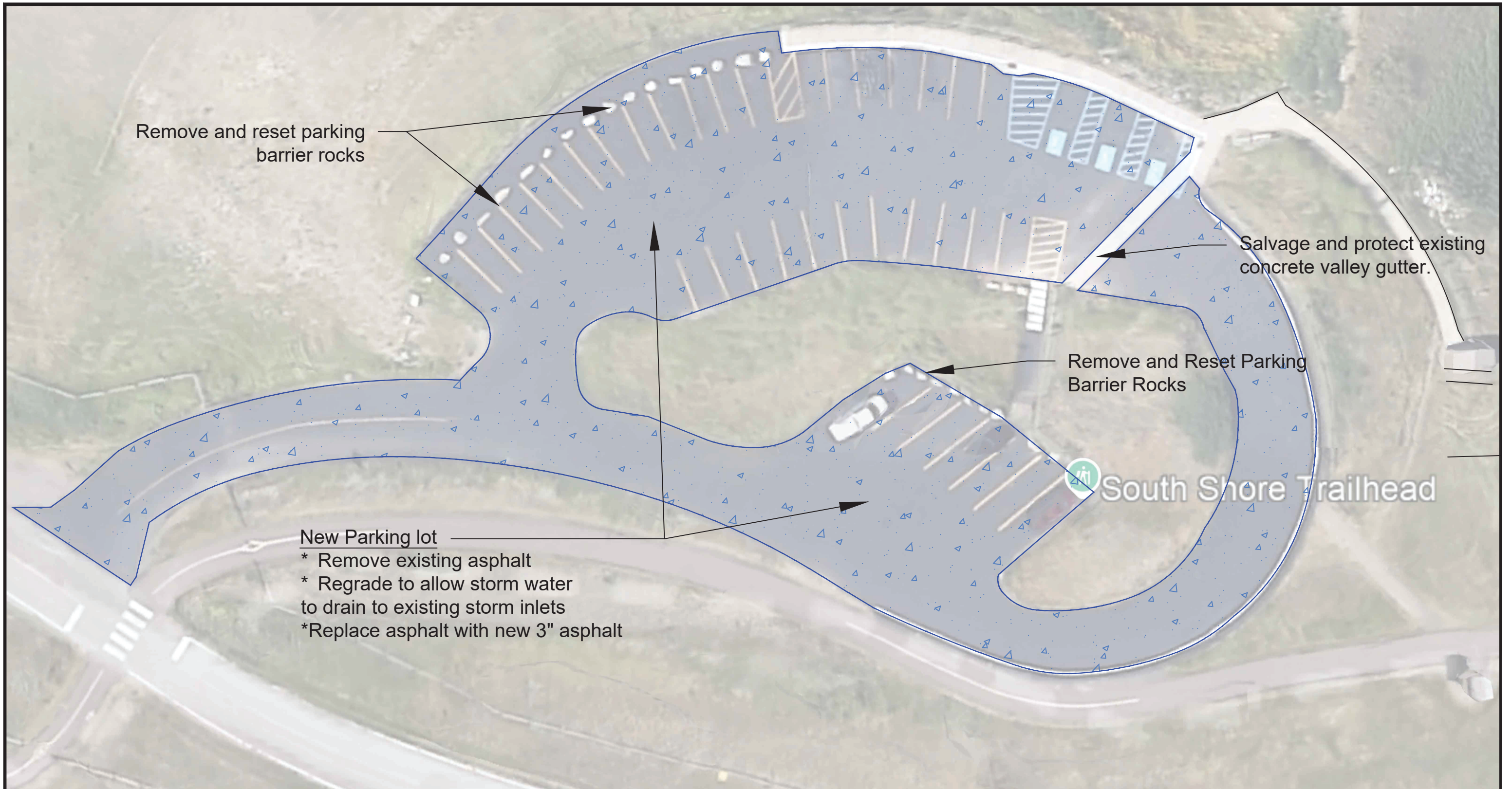


**MONTANA FISH,
WILDLIFE & PARKS**

119

Lewis and Clark Overlook Paving
Construction Notes and Rainbow Overlook Repair

SHEET: 2 of 5



Scale: 1" = 30'



PAVING SITE PLAN

PLAN VIEW

K.Harrington 1/24/25
 DRAWN BY: DATE:
 CHECKED BY: DATE:

J. RENENGER 2/3/25
 APPROVED BY: DATE:
 APPROVED BY: DATE:

APPROVED BY: DATE:
 APPROVED BY: DATE:



**MONTANA FISH,
 WILDLIFE & PARKS**

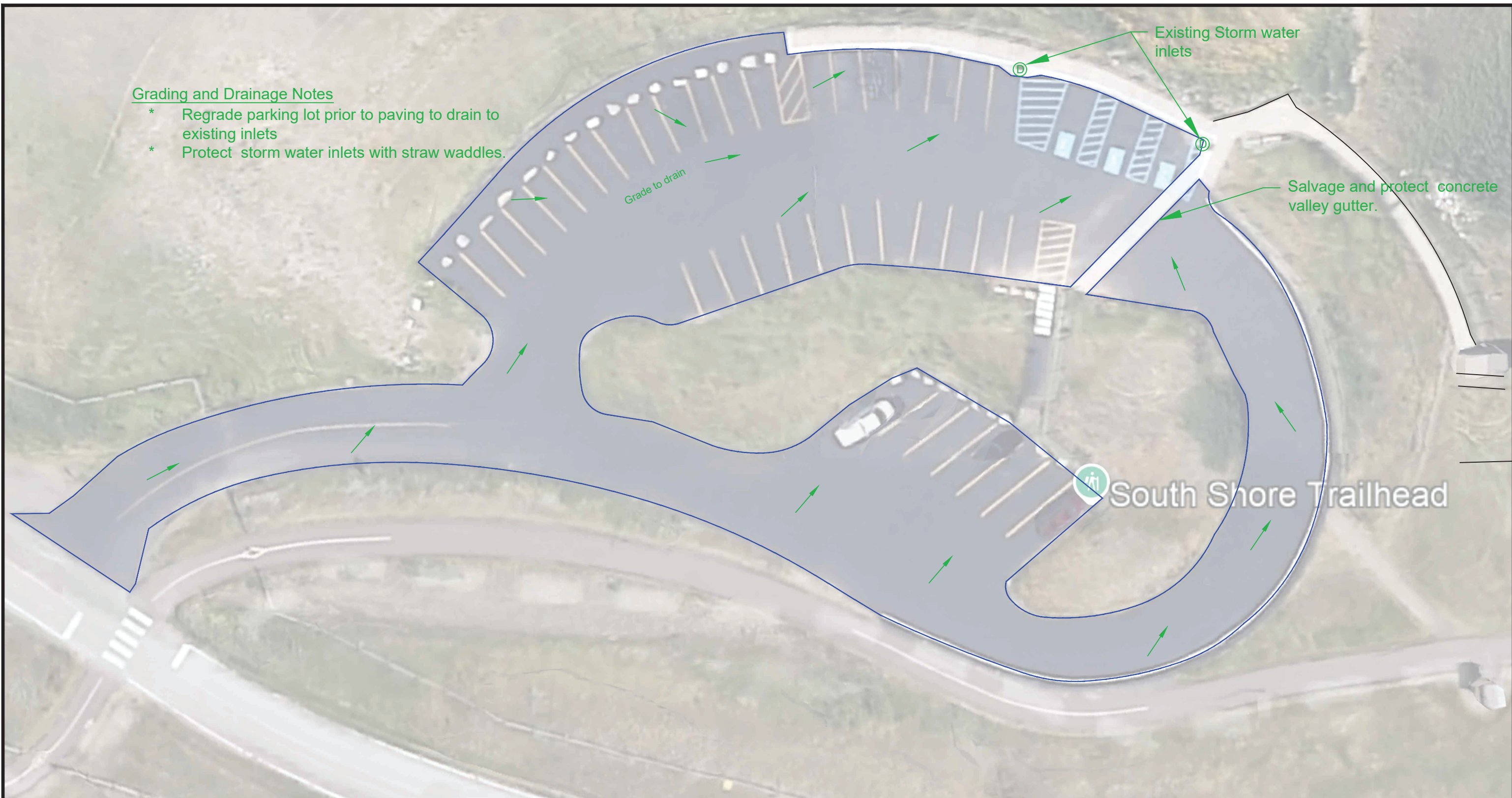
120

**Lewis and Clark Overlook Paving
 Site Plan**

SHEET: **3**
 of **5**

Grading and Drainage Notes

- * Regrade parking lot prior to paving to drain to existing inlets
- * Protect storm water inlets with straw waddles.



Scale: 1" = 30'



GRADING AND DRAINAGE

PLAN VIEW

K.Harrington 1/24/25
 DRAWN BY: DATE:

J. RENENGER 2/3/25
 APPROVED BY: DATE:

APPROVED BY: DATE:
 APPROVED BY: DATE:

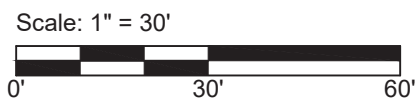
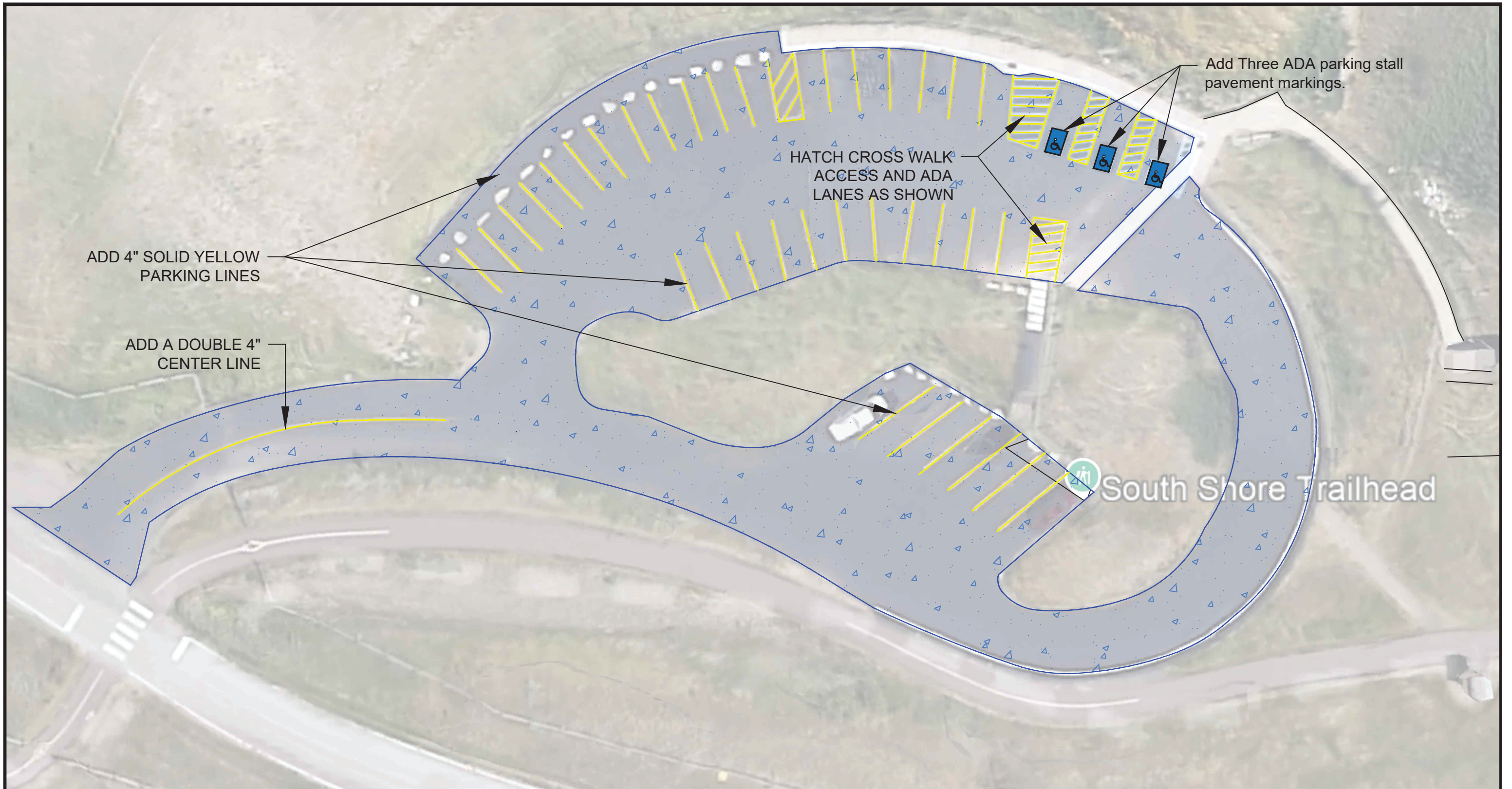


**MONTANA FISH,
 WILDLIFE & PARKS**

121

**Lewis and Clark Overlook Paving
 Graing and Drainage Plan**

SHEET: 4
 of 5



PAVEMENT MARKING PLAN

PLAN VIEW

K.Harrington 1/24/25
 DRAWN BY: DATE:

CHECKED BY: DATE:

J. RENENGER 2/3/25
 APPROVED BY: DATE:

APPROVED BY: DATE:

APPROVED BY: DATE:

APPROVED BY: DATE:



**MONTANA FISH,
 WILDLIFE & PARKS**

122

**Lewis and Clark Overlook Paving
 Pavement Marking Plan**

SHEET: 5
 of 5