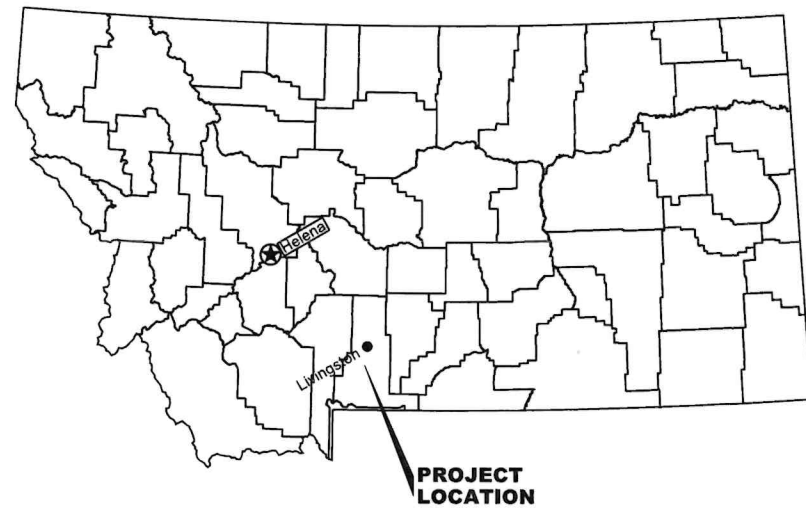


MONTANA FISH, WILDLIFE & PARKS
**MALLARDS REST FAS
ROAD REALIGNMENT**

PARK COUNTY, MT

FWP PROJECT NO. - 7213231



LOCATION MAP

NO SCALE



VICINITY MAP

NO SCALE

NORTH



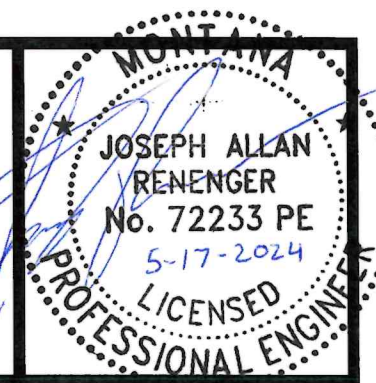
**MONTANA FISH, WILDLIFE AND PARKS
DESIGN AND CONSTRUCTION**

MAILING ADDRESS: PO BOX 200701
HELENA, MT 59620-0701
TEL 406.841.4000
FAX 406.841.4004
fwp.mt.gov/Doing Business/Design&Construction

PHYSICAL ADDRESS: 1522 9th AVENUE
HELENA, MT 59601

DRAWING INDEX

SHEET	DESCRIPTION
1	COVER SHEET
2	SITE MAP & NOTES
3	PLAN & PROFILE - 100+00 - 105+50
4	PLAN & PROFILE - 105+50 - 111+00
5	ROAD DETAILS
6	FENCE DETAILS



J. MANGUM MAY 2024
DRAWN BY: DATE:

J. RENENGER MAY 2024
CHECKED BY: DATE:

APPROVED BY: DATE:

APPROVED BY: DATE:

APPROVED BY: DATE:

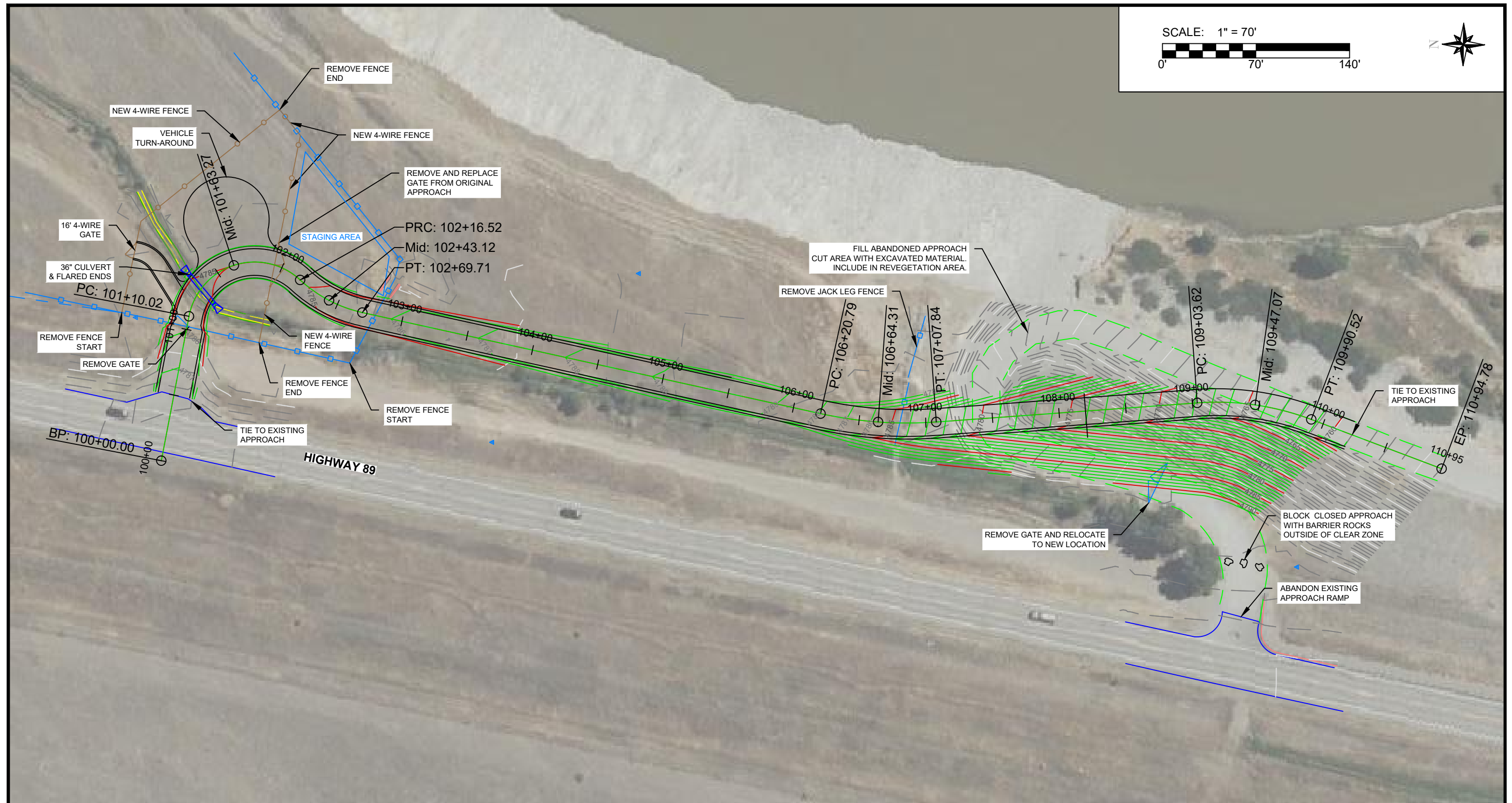
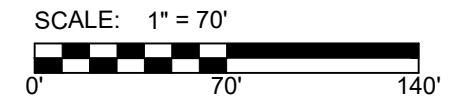
APPROVED BY: DATE:



**MONTANA FISH,
WILDLIFE & PARKS**

**MALLARDS REST ROAD REALIGNMENT
COVER SHEET**

SHEET: 1 OF 6



J. MANGUM
DRAWN BY: DATE: MAY 2024

J. RENENGER
CHECKED BY: DATE: MAY 2024

APPROVED BY: DATE:

APPROVED BY: DATE:

APPROVED BY: DATE:

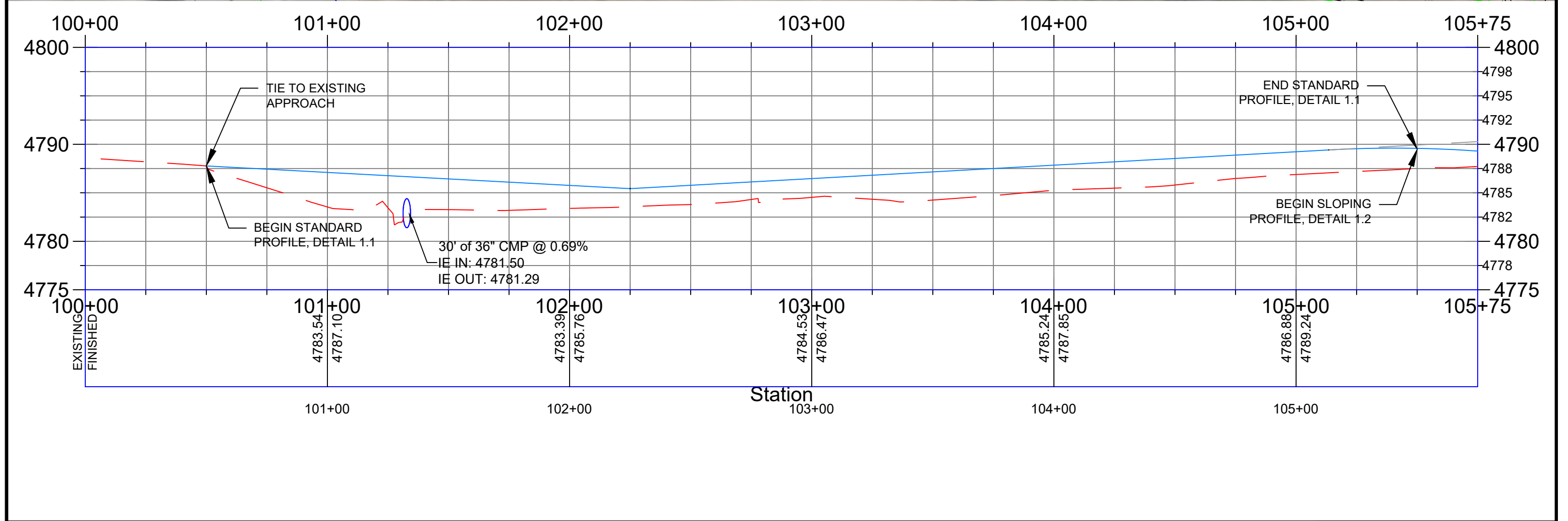
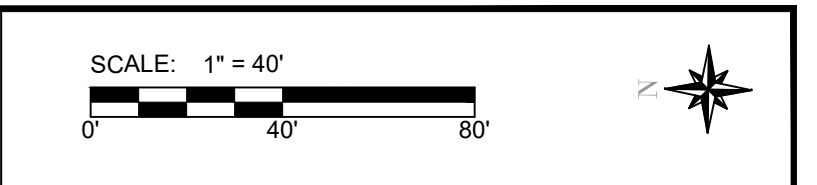
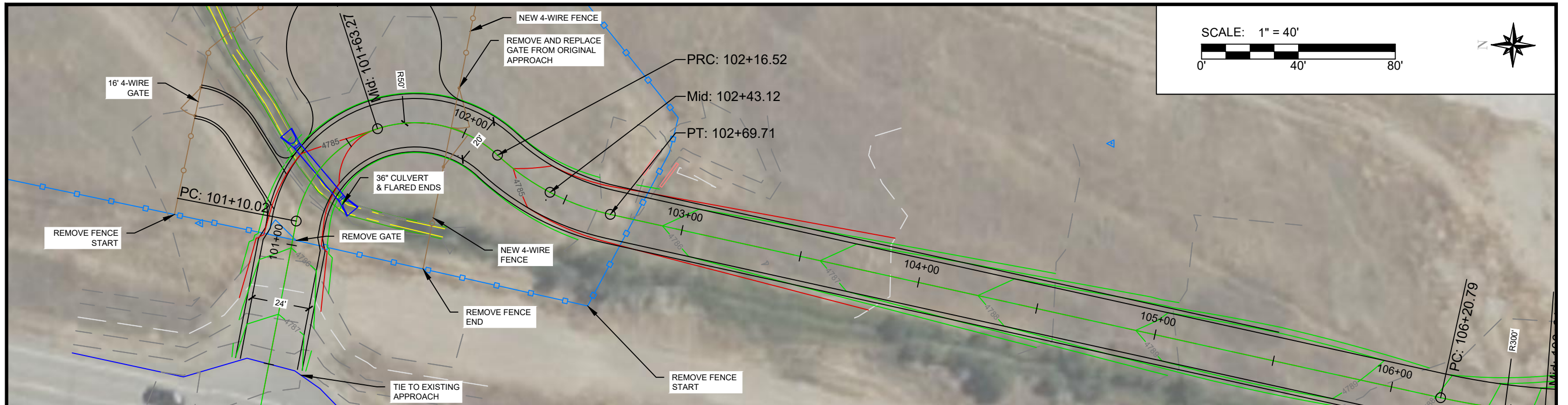
APPROVED BY: DATE:



**MONTANA FISH,
WILDLIFE & PARKS**

**MALLARDS REST ROAD REALIGNMENT
SITE MAP & NOTES**

SHEET: 2 OF 6



J. MANGUM MAY 2024
 DRAWN BY: DATE:
 J. RENENGER MAY 2024
 CHECKED BY: DATE:

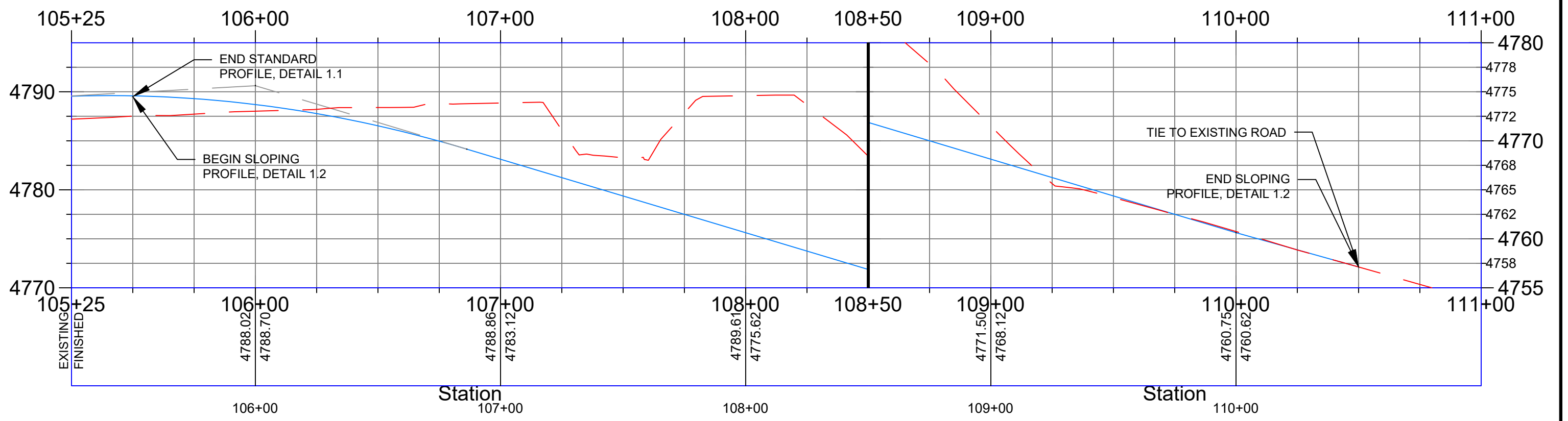
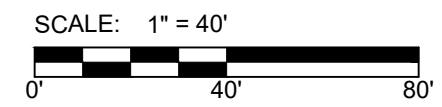
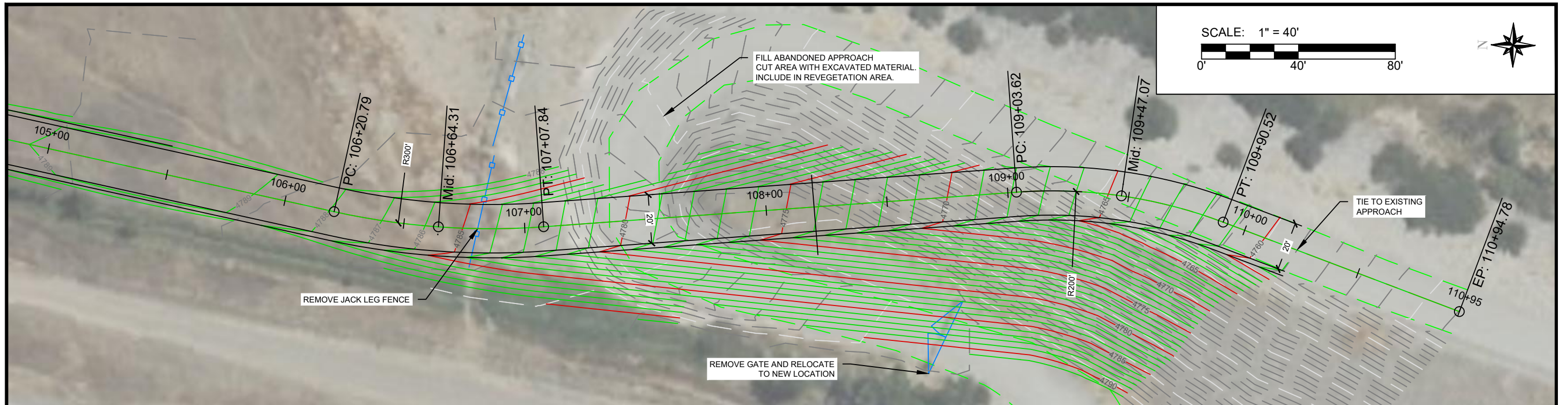
APPROVED BY: DATE:
 APPROVED BY: DATE:

APPROVED BY: DATE:
 APPROVED BY: DATE:



MALLARDS REST ROAD REALIGNMENT
PLAN & PROFILE - 100+00 - 105+50

SHEET: **3**
 OF
6



J. MANGUM MAY 2024
DRAWN BY: DATE:
J. RENENGER MAY 2024
CHECKED BY: DATE:

APPROVED BY: DATE:
APPROVED BY: DATE:

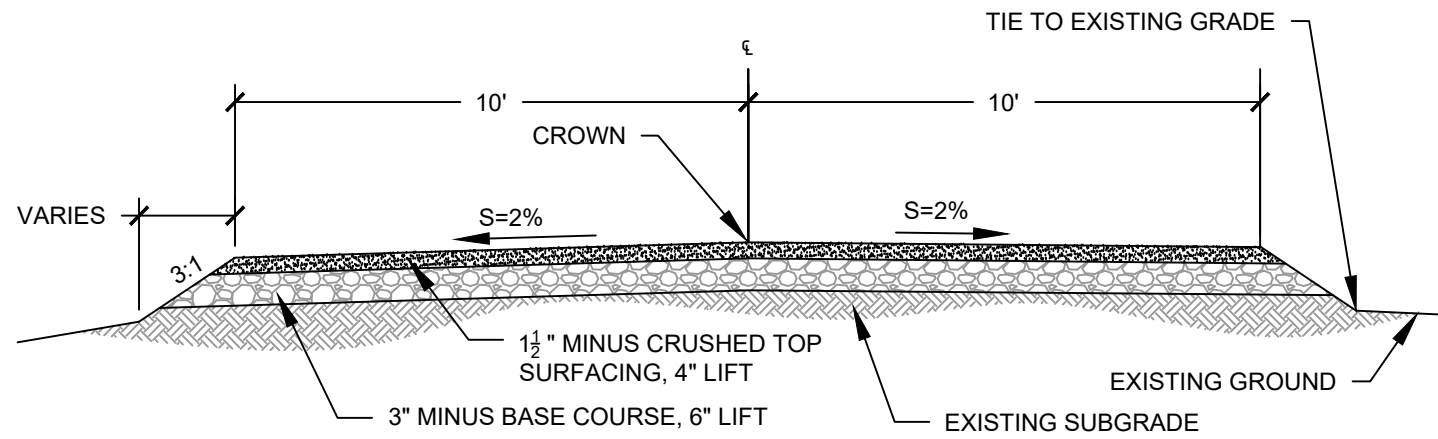
APPROVED BY: DATE:
APPROVED BY: DATE:



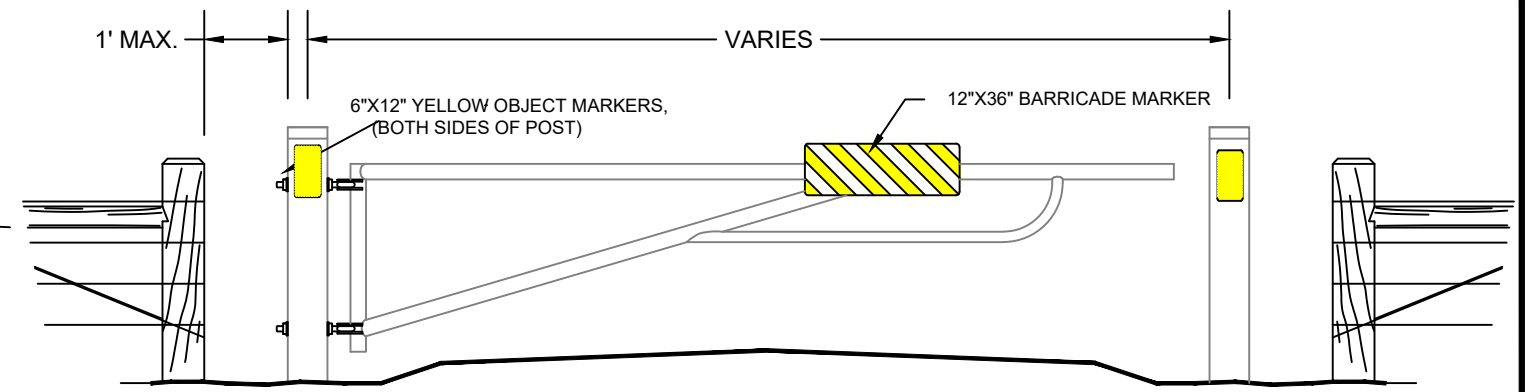
**MONTANA FISH,
WILDLIFE & PARKS**

**MALLARDS REST ROAD REALIGNMENT
PLAN & PROFILE - 105+50 - 111+00**

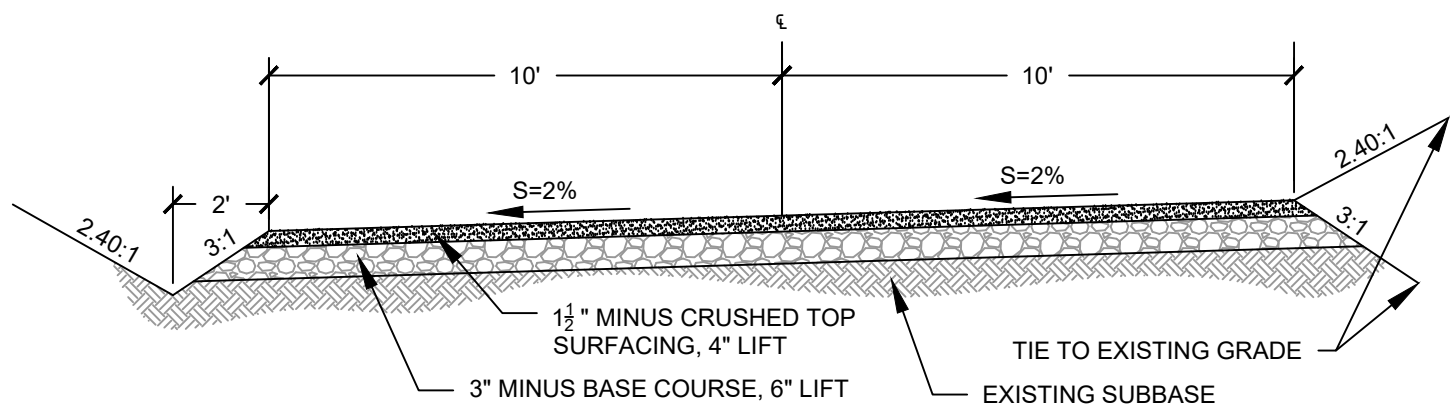
SHEET: 4
OF 6
6



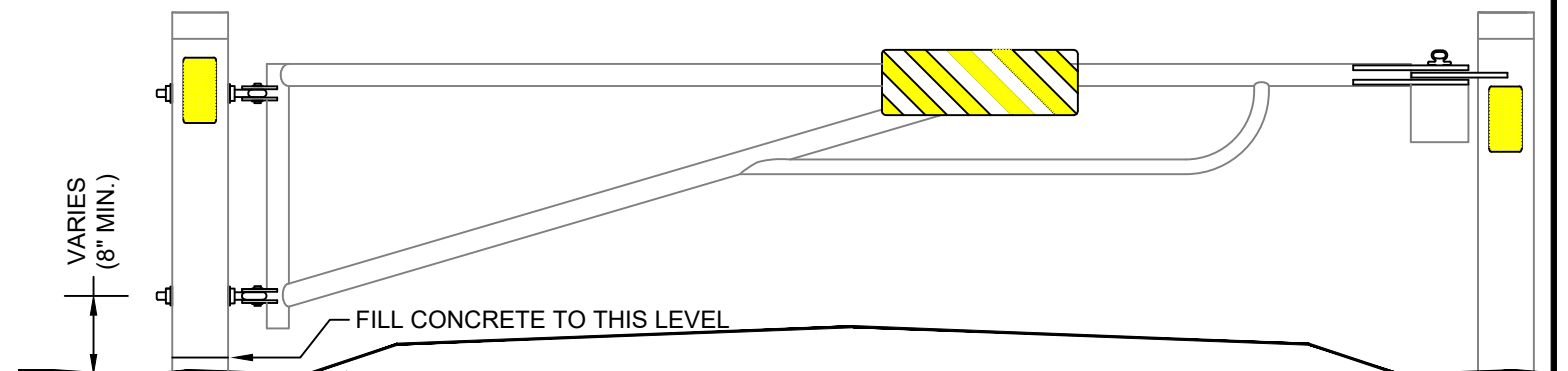
1.1 STANDARD ROAD PROFILE, STA: 100+50 - 105+50
SCALE: NTS



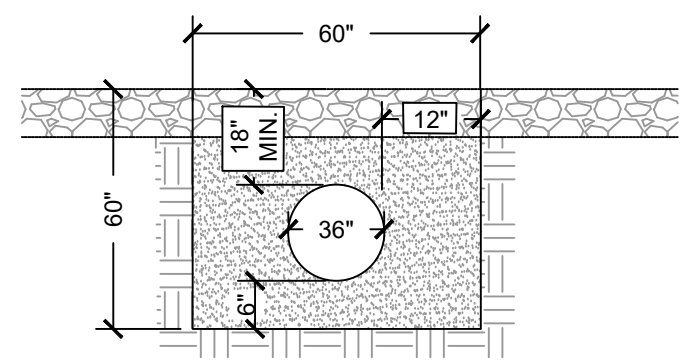
ELEVATION



1.2 SLOPING ROAD PROFILE, STA: 105+50 - 110+50
SCALE: NTS

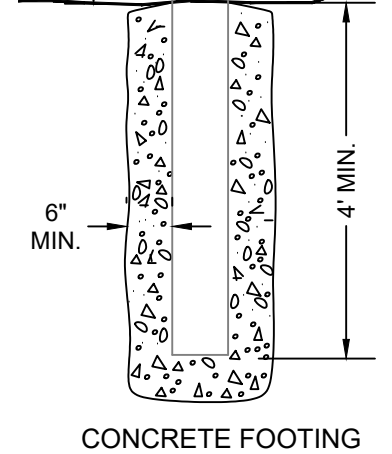


PIPE GATE DETAIL



- NOTES:**
- EXCAVATED MATERIAL FROM THE TRENCH MAY BE SALVAGED AND REUSED AS BACKFILL, PROVIDING ALL OVERSIZED ROCKS ARE REMOVED (3-INCH MINUS)
 - MINIMUM OF 18" OF COVER OVER CULVERT SHALL BE REQUIRED.

1.3 CULVERT TRENCH, STA: 101+32.78
SCALE: NTS



- NOTES:**
- INSTALL 6" WELL CASING GATE STOP TO FASTEN THE GATE PARALLEL TO THE ACCESS ROAD. THE HEIGHT OF THE EYE BOLT SHALL MATCH THE TOP RAIL OF THE GATE. ATTACH 24" OF BRIGHT PLATED 3/8" CHAIN TO THE EYE BOLT. SUPPLY & INSTALL OBJECT MARKERS ON THE SIDE OF THE GATE STOP AWAY FROM THE GATE.
 - DETAILS SHOWN AS A REPRESENTATION OF OF THE GATE TO BE MOVED. ACTUAL DIMENSIONS MAY VARY WITH EXISTING GATE TO BE MOVED.

1.4 PIPE GATE, STA: 101+94
SCALE: NTS

J MANGUM MAY 2024
DRAWN BY: DATE:
J. RENENGER MAY 2024
CHECKED BY: DATE:

APPROVED BY: DATE:
APPROVED BY: DATE:

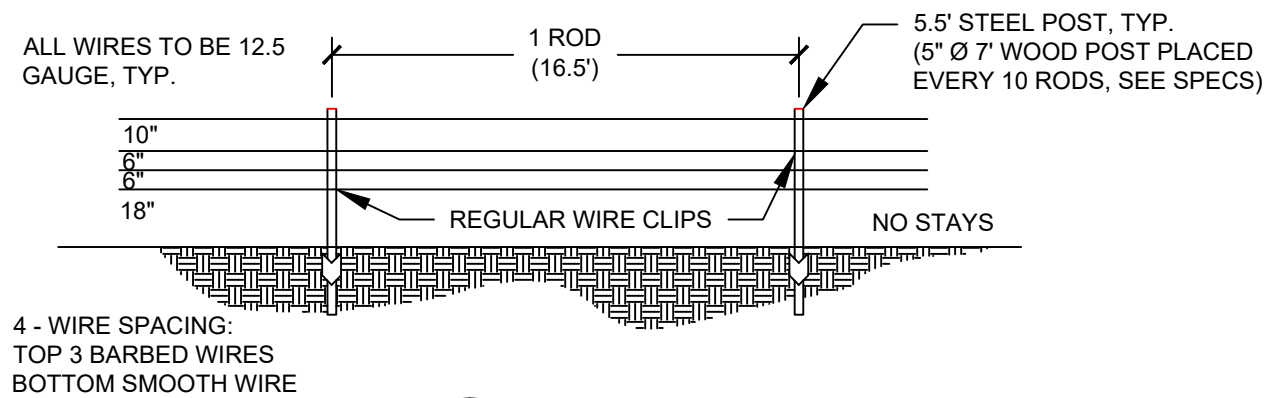
APPROVED BY: DATE:
APPROVED BY: DATE:



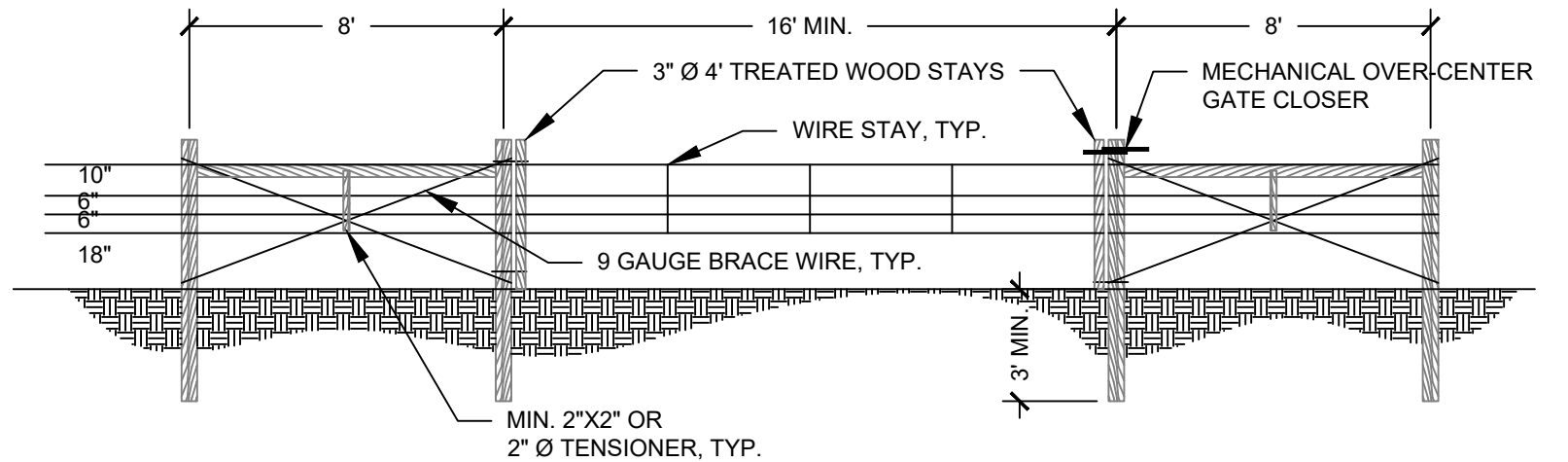
**MONTANA FISH,
WILDLIFE & PARKS**

**MALLARDS REST ROAD REALIGNMENT
ROAD DETAILS**

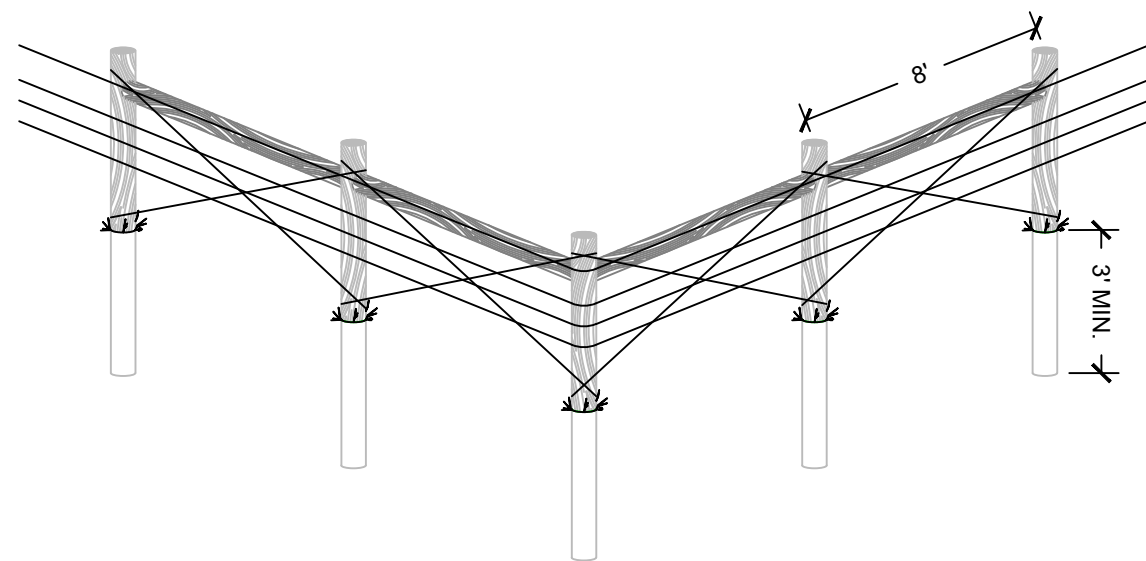
SHEET: **5**
OF
6



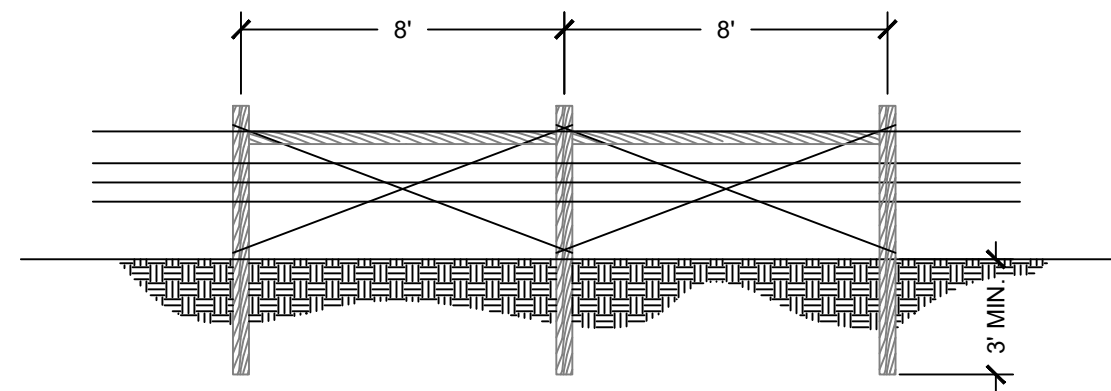
2.1 4-WIRE FENCE
SCALE: NTS



2.2 4 WIRE 16' GATE
SCALE: NTS



2.3 FENCE CORNER
SCALE: NTS



2.4 BRACE PANEL (SINGLE & DOUBLE)
SCALE: NTS

J MANGUM MAY 2024
DRAWN BY: DATE:

J. RENENGER MAY 2024
CHECKED BY: DATE:

APPROVED BY: DATE:

APPROVED BY: DATE:

APPROVED BY: DATE:

APPROVED BY: DATE:



**MONTANA FISH,
WILDLIFE & PARKS**

**MALLARDS REST ROAD REALIGNMENT
FENCE DETAILS**

SHEET: **6**
OF
6