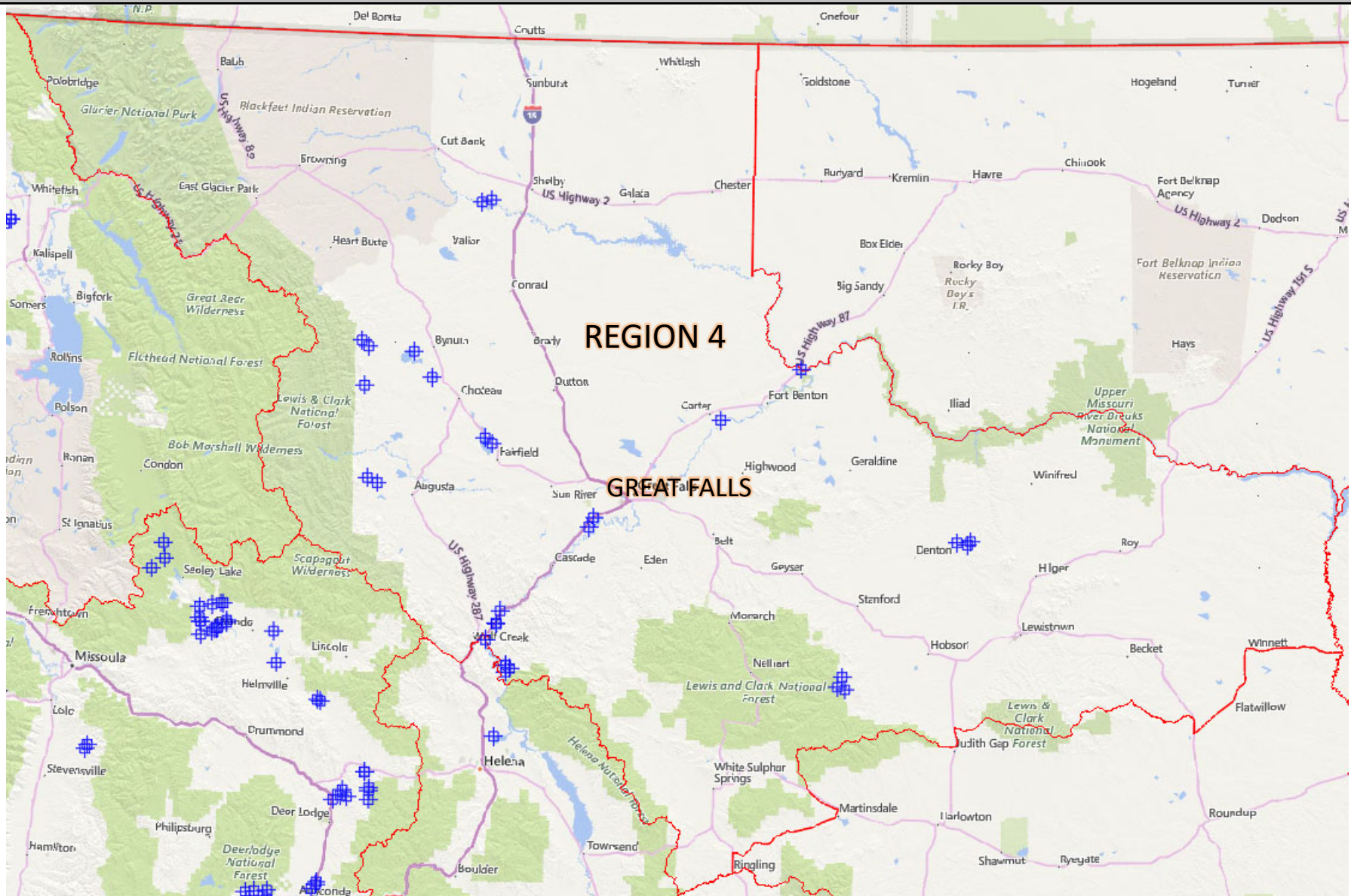


REGION 4 KIOSK/SIGN LOCATIONS

MONTANAFWP

FWP Region	Site Name	Kiosk/Sign Type #	Kiosk/Sign Description	Location (Latitude, Longitude)					
					4	Judith River WMA	530	Double 60" WMA Kiosk	46.88004, -110.27961
4	Bynum Reservoir FAS	547	60" FAS Kiosk with Roof	47.96000, -112.40612	4	Judith River WMA	532	72" WMA Kiosk	46.88821, -110.31510
4	Carter Ferry FAS	548	48" Single FAS Kiosk	47.76087, -110.89753	4	Judith River WMA	532	72" WMA Kiosk	46.92141, -110.29320
4	Craig FAS	541	Double 48" FAS Kiosk with Roof	47.074139, -111.962778	4	Lake Helena WMA	532	72" WMA Kiosk	46.70331, -111.95834
4	Craig FAS	547	60" FAS Kiosk with Roof	47.0735, -111.963194	4	Marias River WMA	530	Double 60" WMA Kiosk	48.45907, -112.09809
4	Craig FAS Overflow	545	60" FAS Kiosk	47.076, -111.9635	4	Marias River WMA	532	72" WMA Kiosk	48.46669, -112.04997
4	Dunes FAS	548	48" Single FAS Kiosk	47.40015, -111.52766	4	Sun River WMA	530	Double 60" WMA Kiosk	47.5392, -112.61123
4	Eureka Reservoir FAS	547	60" FAS Kiosk with Roof	47.87725, -112.31359	4	Sun River WMA	532	72" WMA Kiosk	47.52371, -112.5628
4	Loma Bridge FAS	548	48" Single FAS Kiosk	47.40015, -111.52766					
4	Stickney Creek FAS	548	48" Single FAS Kiosk	47.11648, -111.94537					
4	Ulm Bridge FAS	548	48" Single FAS Kiosk	47.43023, -111.50107					
4	Wolf Creek Bridge FAS	548	48" Single FAS Kiosk	47.01200, -112.01161					
4	Beartooth WMA	530	Double 60" WMA Kiosk	46.93916, -111.91206					
4	Beartooth WMA	532	72" WMA Kiosk	46.93771, -111.91109					
4	Beartooth WMA	532	72" WMA Kiosk	46.92812, -111.89223					
4	Beartooth WMA	532	72" WMA Kiosk	46.91552, -111.91088					
4	Beckman WMA	530	Double 60" WMA Kiosk	47.36593, -109.74285					
4	Beckman WMA	532	72" WMA Kiosk	47.36968, -109.67766					
4	Beckman WMA	532	72" WMA Kiosk	47.35856, -109.69188					
4	Blackleaf WMA	530	Double 60" WMA Kiosk	47.97184, -112.62986					
4	Blackleaf WMA	532	72" WMA Kiosk	47.99100, -112.66385					
4	Ear Mountain WMA	530	Double 60" WMA Kiosk	47.84263, -112.64279					
4	Freezout Lake WMA	530	Double 60" WMA Kiosk	47.66563, -112.01001					
4	Freezout Lake WMA	532	72" WMA Kiosk	47.68379, -112.04554					

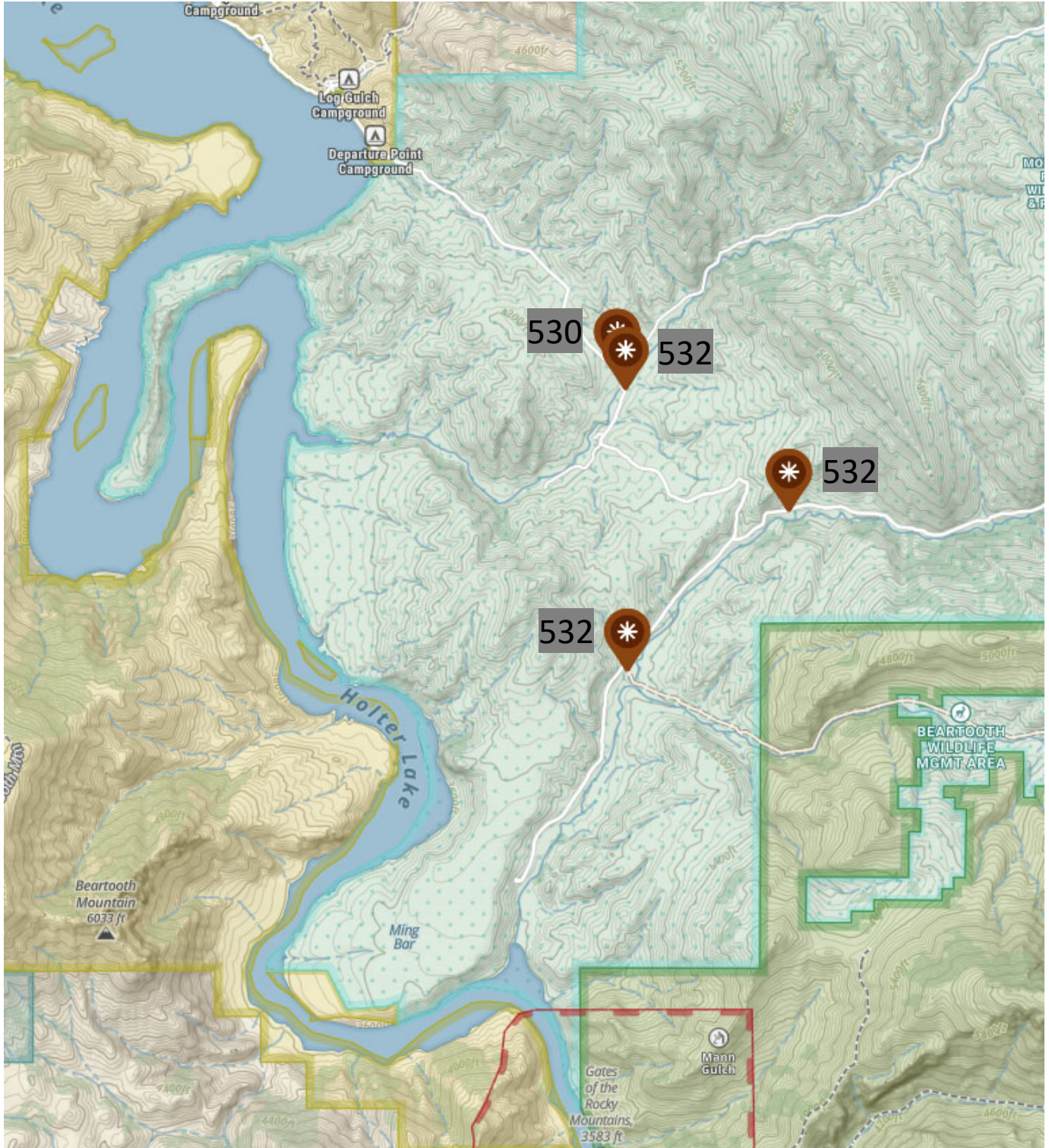


Approximate Kiosk Location

Map produced by: FWP Design and Construction

Location Map provided for vicinity reference only. FWP shall stake locations of each kiosk prior to construction or utility locates. Background Imagery from webmap.onxmaps.com

PROPOSED KIOSK/SIGN LOCATION PLAN

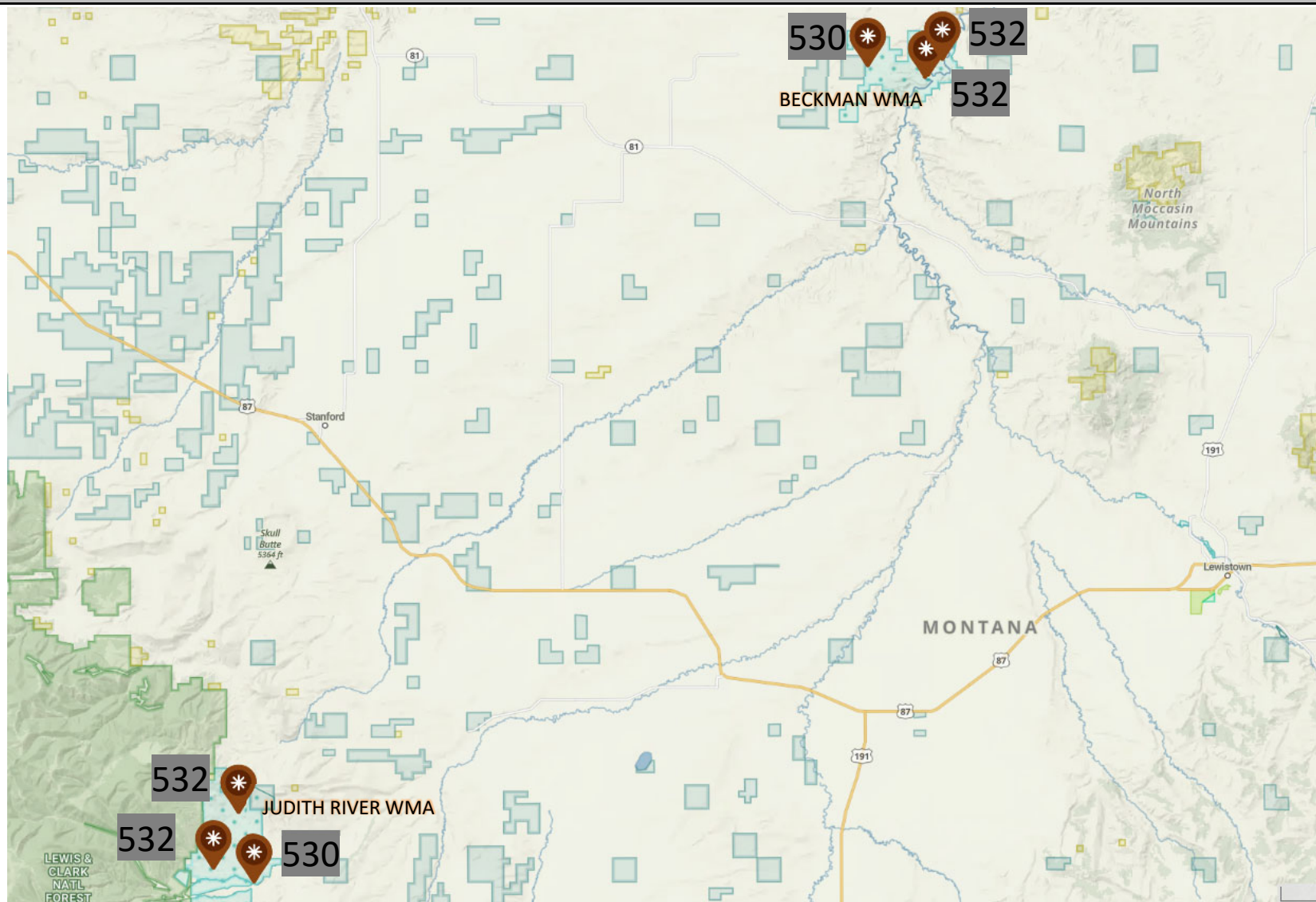


Approximate Kiosk Location

Map produced by: FWP Design and Construction

Location Map provided for vicinity reference only. FWP shall stake locations of each kiosk prior to construction or utility locates. Background Imagery from webmap.onxmaps.com

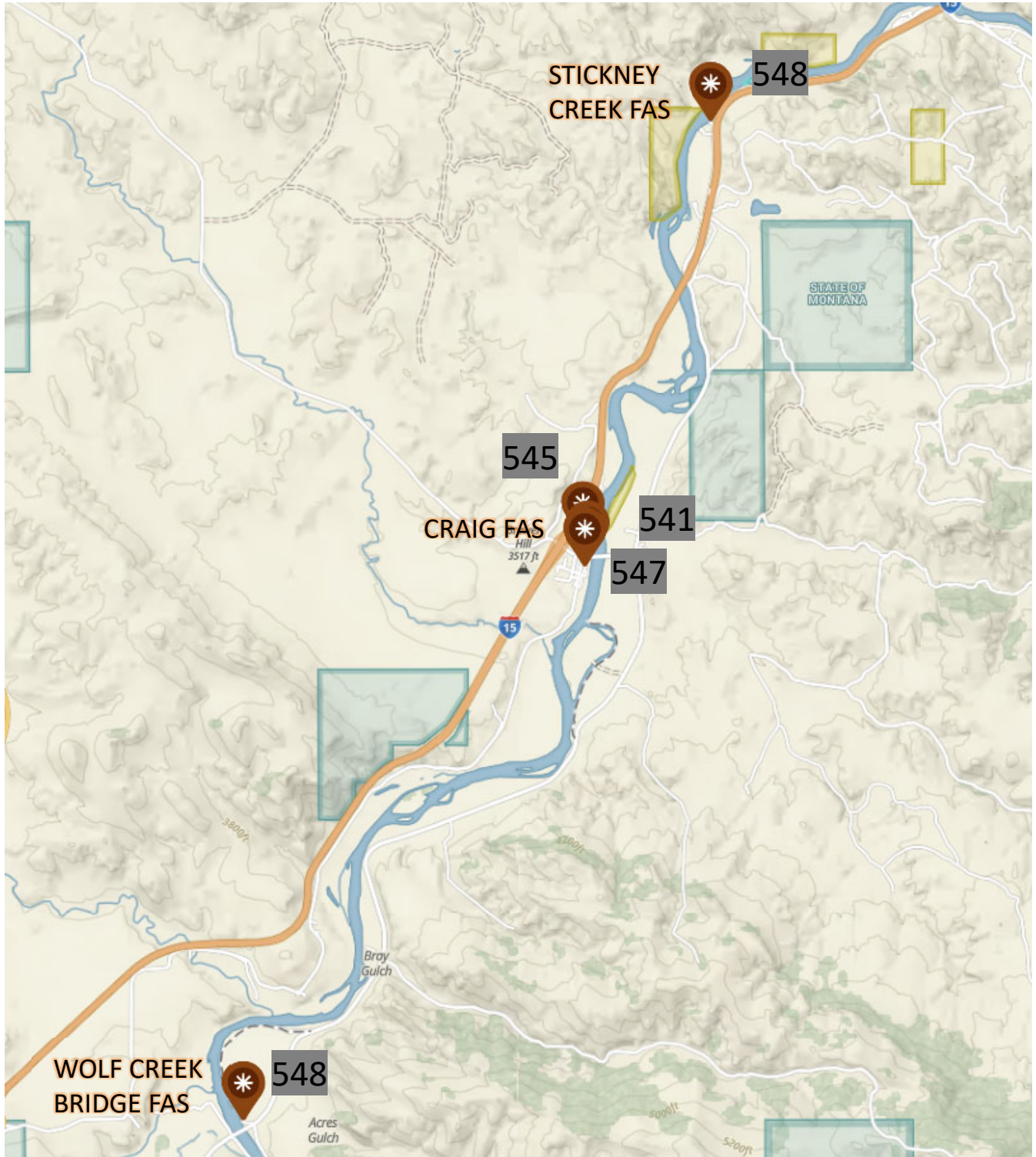
PROPOSED KIOSK LOCATION PLAN



Approximate Kiosk Location

Map produced by: FWP Design and Construction

PROPOSED KIOSK LOCATION PLAN

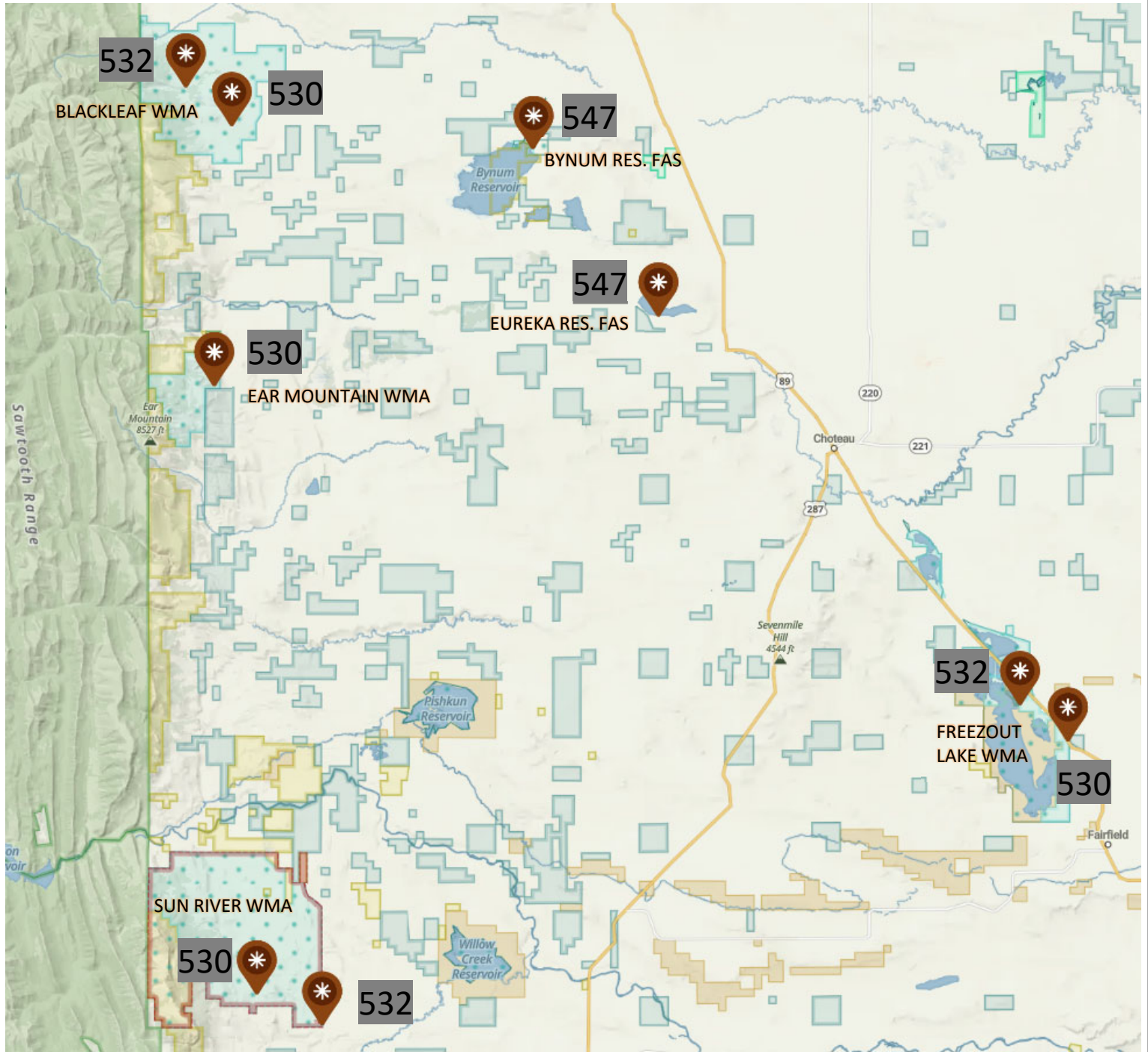


Approximate Kiosk Location

Map produced by: FWP Design and Construction

Location Map provided for vicinity reference only. FWP shall stake locations of each kiosk prior to construction or utility locates. Background Imagery from webmap.onxmaps.com

PROPOSED KIOSK LOCATION PLAN

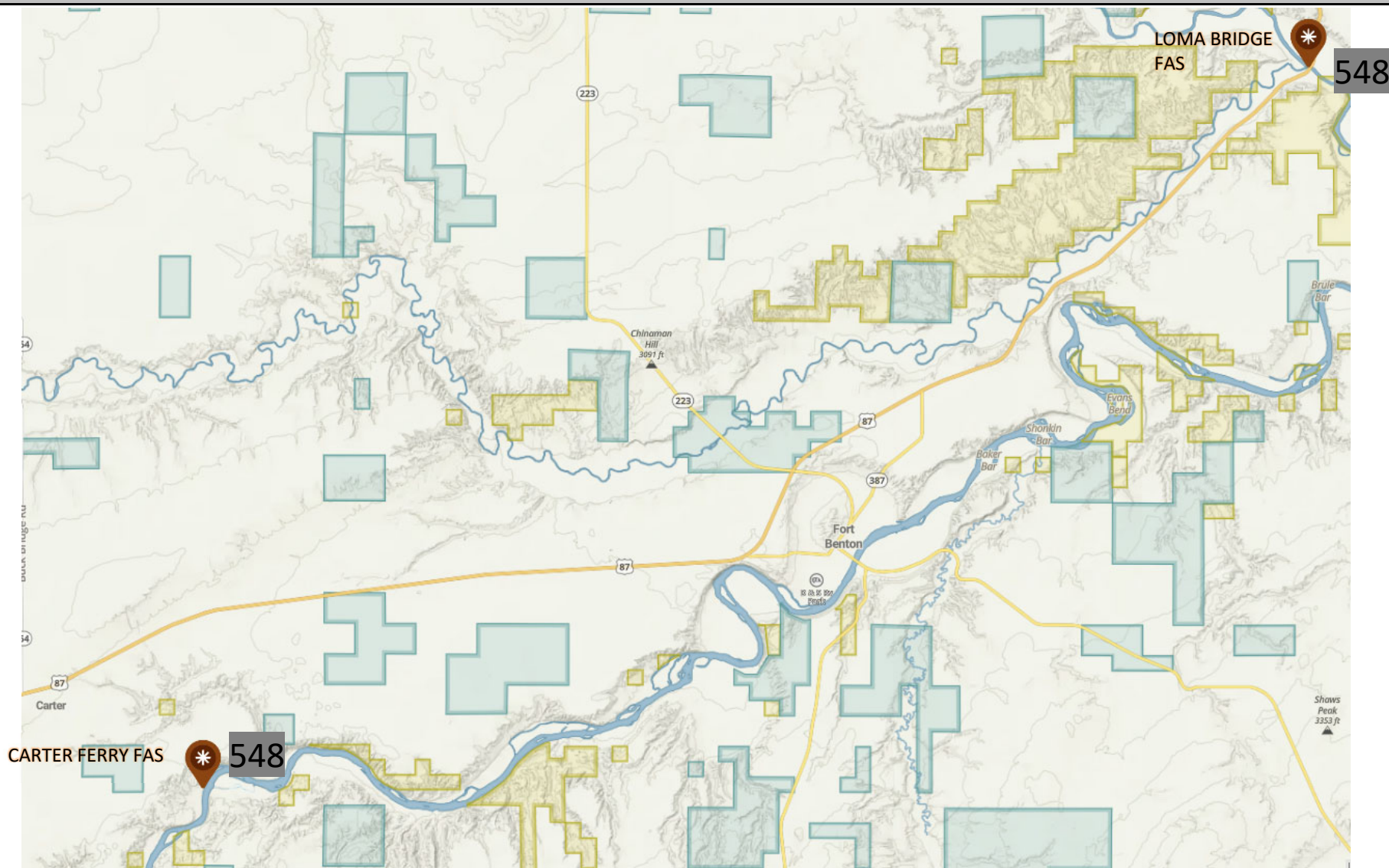


Approximate Kiosk Location

Map produced by: FWP Design and Construction

Location Map provided for vicinity reference only. FWP shall stake locations of each kiosk prior to construction or utility locates. Background Imagery from webmap.onxmaps.com

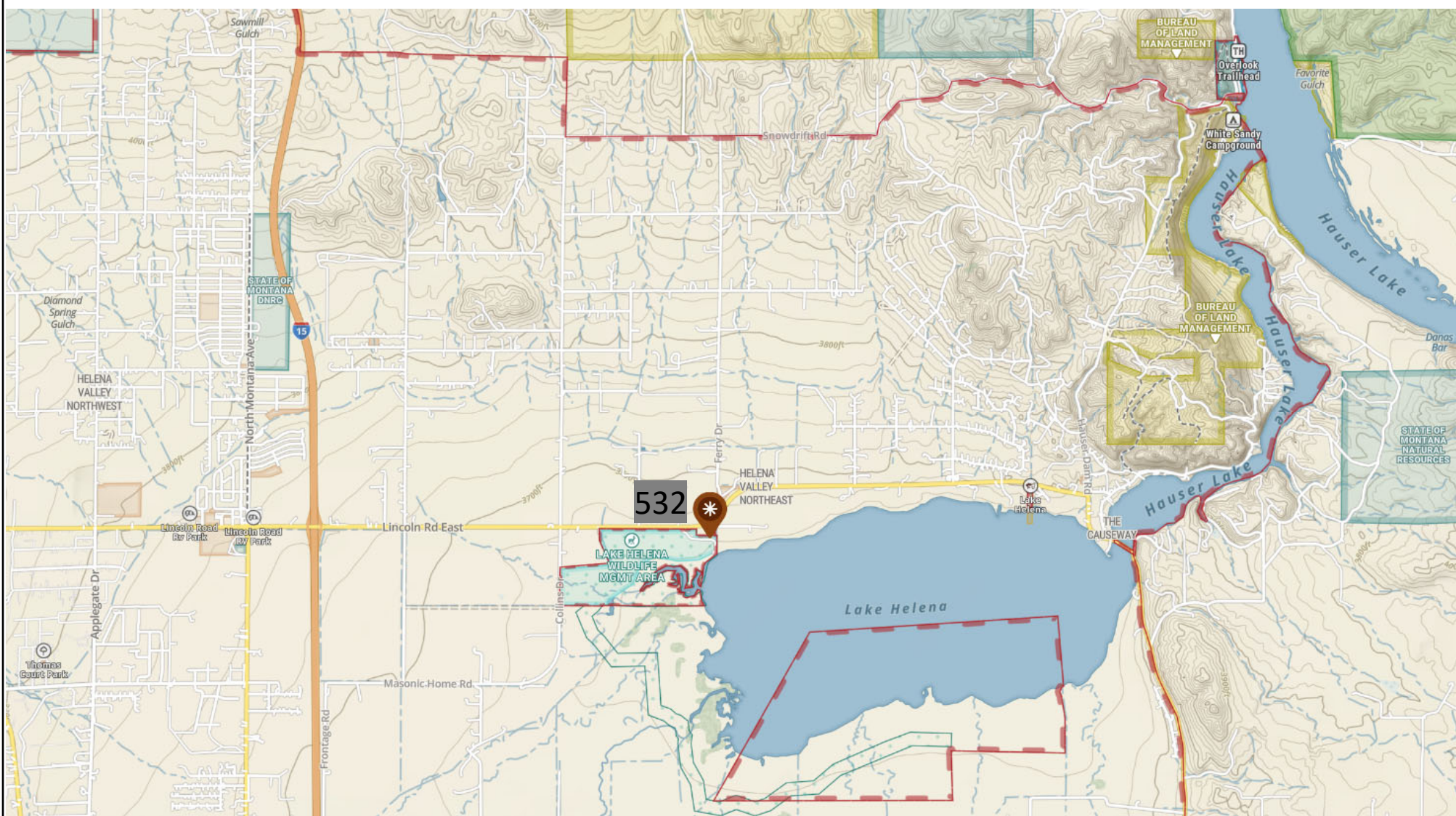
PROPOSED KIOSK LOCATION PLAN



Approximate Kiosk Location

Map produced by: FWP Design and Construction

PROPOSED KIOSK LOCATION PLAN

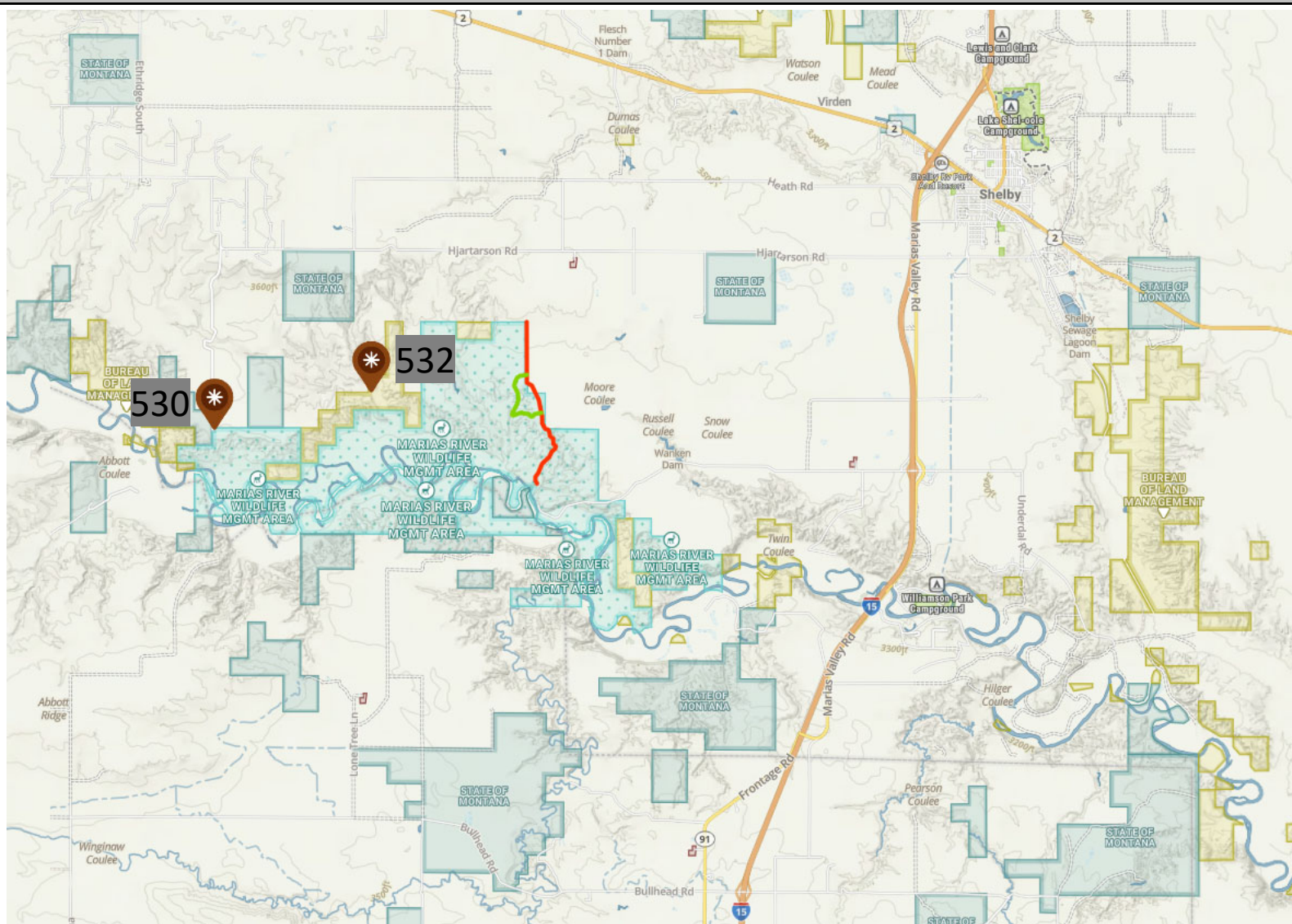


Approximate Kiosk Location

Map produced by: FWP Design and Construction

Location Map provided for vicinity reference only. FWP shall stake locations of each kiosk prior to construction or utility locates. Background Imagery from webmap.onxmaps.com

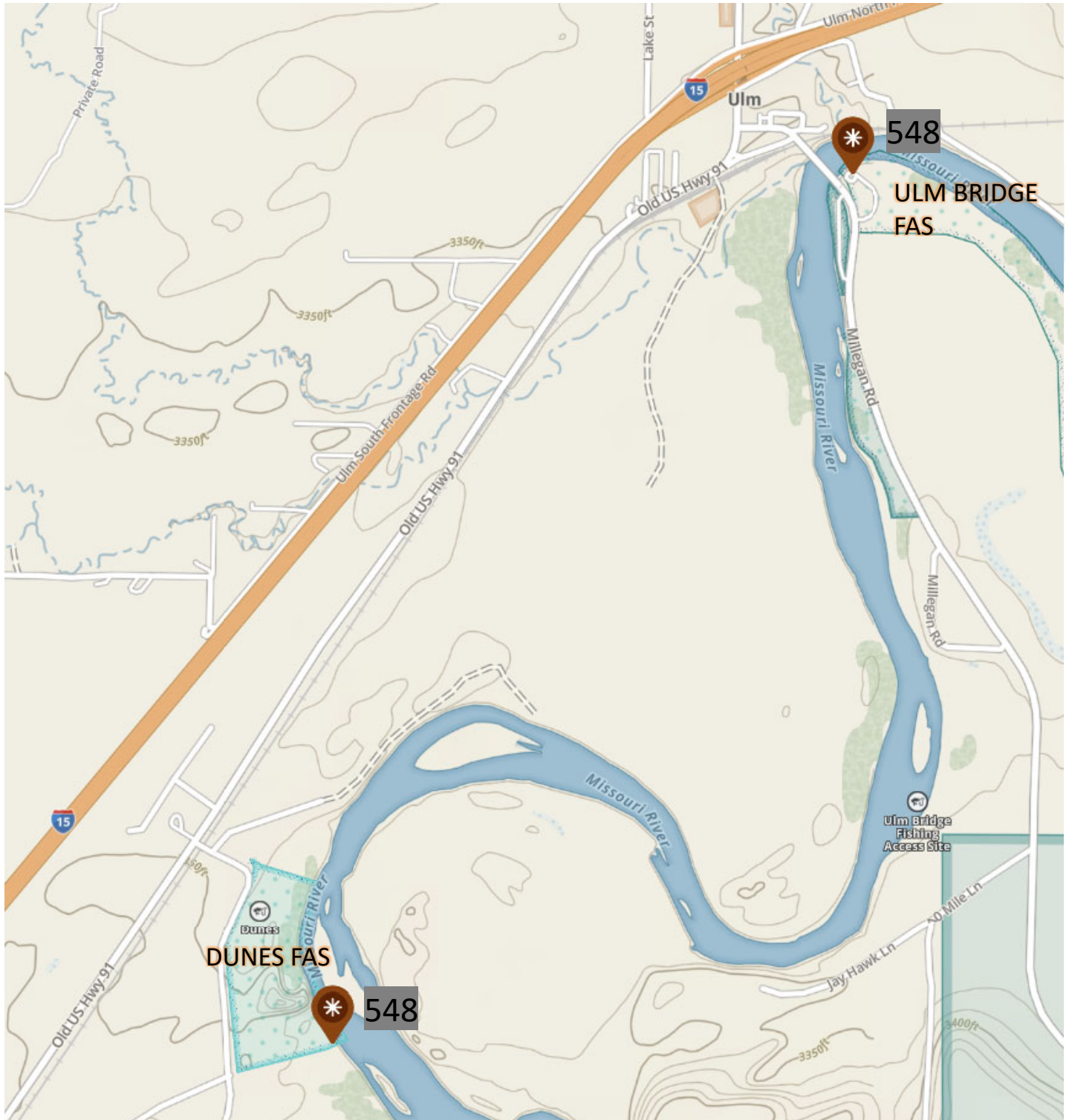
PROPOSED KIOSK LOCATION PLAN



Approximate Kiosk Location

Map produced by: FWP Design and Construction

PROPOSED KIOSK LOCATION PLAN



Approximate Kiosk Location

Map produced by: FWP Design and Construction

Location Map provided for vicinity reference only. FWP shall stake locations of each kiosk prior to construction or utility locates. Background Imagery from webmap.onxmaps.com