

REGION 3 KIOSK/SIGN LOCATIONS

MONTANAFWP

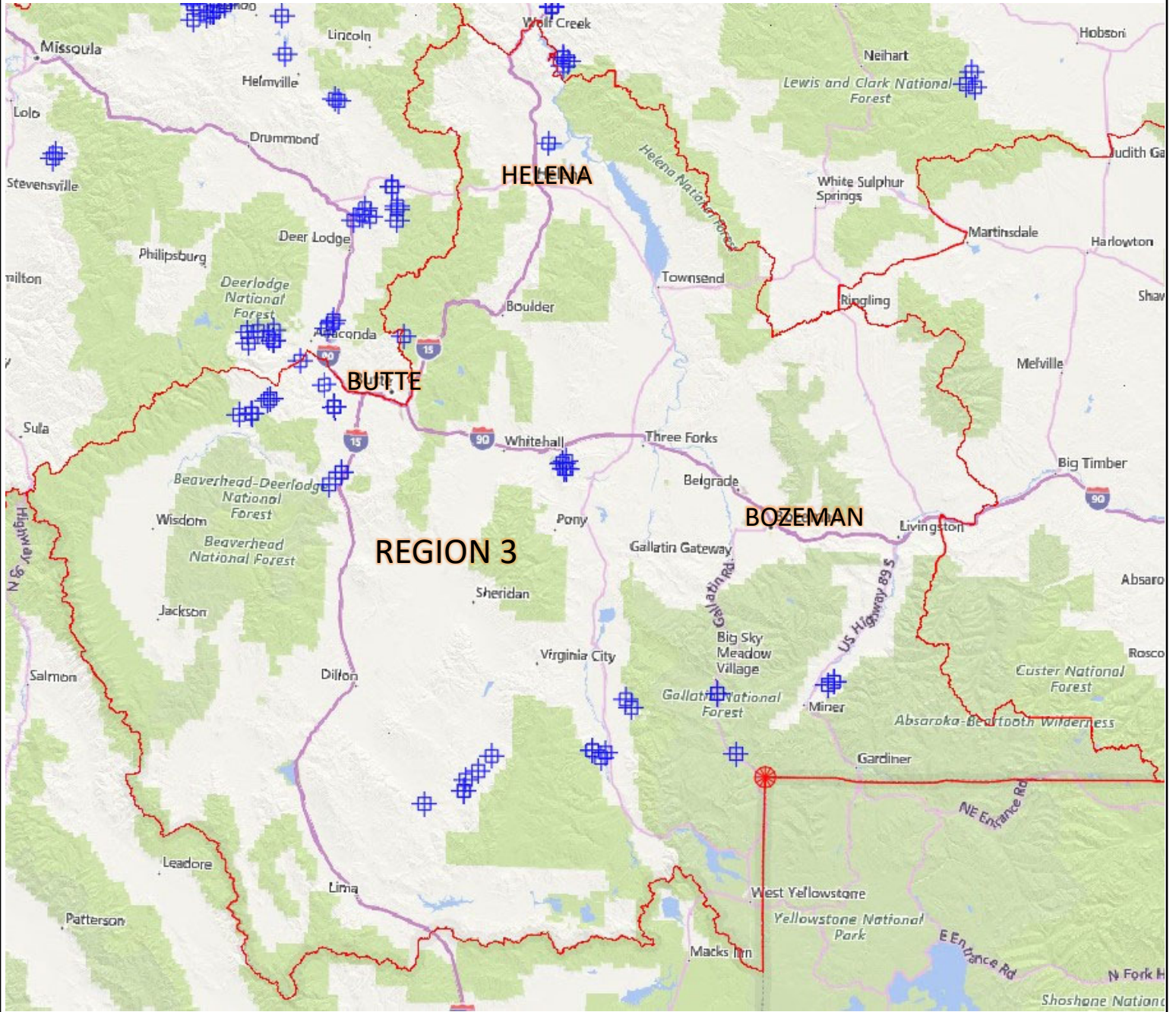
FWP Region	Site Name	Kiosk/Sign Type #	Kiosk/Sign Description	Location (Latitude, Longitude)
3	Lewis & Clark Caverns State Park	500	State Parks Large Kiosk w/ Wood Shake Shingles	45.822922, -111.851022
3	Lewis & Clark Caverns State Park	508	Trailhead Kiosk - Small w/ Wood Shake Shingles	45.823103, -111.849969
3	Lewis & Clark Caverns State Park	508	Trailhead Kiosk - Small w/ Wood Shake Shingles	45.823453, -111.859275
3	Lewis & Clark Caverns State Park	508	Trailhead Kiosk - Small w/ Wood Shake Shingles	45.824217, -111.856869
3	Lewis & Clark Caverns State Park	508	Trailhead Kiosk - Small w/ Wood Shake Shingles	45.844606, -111.852858
3	Lewis & Clark Caverns State Park	508	Trailhead Kiosk - Small w/ Wood Shake Shingles	45.838781, -111.865539
3	Lewis & Clark Caverns State Park	508	Trailhead Kiosk - Small w/ Wood Shake Shingles	45.837906, -111.867208
3	Lewis & Clark Caverns State Park	510	Group Use Kiosk w Lockable Whiteboard w/ Wood Shake Shingles	45.823761, -111.858372
3	Bear Creek WMA	532	72" WMA Kiosk	45.18139, -111.57453
3	Bear Creek WMA	532	72" WMA Kiosk	45.20351, -111.59601
3	Blacktail WMA	532	72" WMA Kiosk	44.90336, -112.35423
3	Dome Mountain WMA	110	Montana Shaped Entry Monument *	45.26309, -110.79824
3	Dome Mountain WMA	110	Montana Shaped Entry Monument *	45.25481, -110.82086
3	Dome Mountain WMA	532	72" WMA Kiosk	45.25443, -110.82129
3	Dome Mountain WMA	532	72" WMA Kiosk	45.26328, -110.79849
3	Fleecer Mountain WMA	110	Montana Shaped Entry Monument *	45.79242, -112.72209
3	Fleecer Mountain WMA	110	Montana Shaped Entry Monument *	45.96738, -112.75749
3	Fleecer Mountain WMA	532	72" WMA Kiosk	45.79254, -112.72212
3	Fleecer Mountain WMA	532	72" WMA Kiosk	45.75794, -112.76781
3	Fleecer Mountain WMA	532	72" WMA Kiosk	45.96759, -112.75745

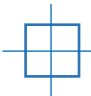
REGION 3 KIOSK/SIGN LOCATIONS

MONTANAFWP

3	Gallatin WMA	110	Montana Shaped Entry Monument *	45.22502, -111.24559
3	Gallatin WMA	110	Montana Shaped Entry Monument *	45.96738, -112.75749
3	Gallatin WMA	532	72" WMA Kiosk	45.06278, -111.16831
3	Gallatin WMA	532	72" WMA Kiosk	45.22501, -111.24542
3	Mount Haggin WMA	110	Montana Shaped Entry Monument *	46.08961, -112.90027
3	Mount Haggin WMA	110	Montana Shaped Entry Monument *	45.98352, -113.0111
3	Mount Haggin WMA	110	Montana Shaped Entry Monument *	45.94035, -113.07914
3	Mount Haggin WMA	532	72" WMA Kiosk	45.94182, -113.08331
3	Mount Haggin WMA	532	72" WMA Kiosk	45.98360, -113.01092
3	Mount Haggin WMA	532	72" WMA Kiosk	45.97761, -113.02146
3	Mount Haggin WMA	532	72" WMA Kiosk	46.02660, -112.80133
3	Mount Haggin WMA	532	72" WMA Kiosk	45.93604, -113.12831
3	Robb-Ledford WMA	110	Montana Shaped Entry Monument *	44.94214, -112.20543
3	Robb-Ledford WMA	532	72" WMA Kiosk	44.94221, -112.20541
3	Robb-Ledford WMA	532	72" WMA Kiosk	44.97212, -112.19928
3	Robb-Ledford WMA	532	72" WMA Kiosk	45.03914, -112.10321
3	Robb-Ledford WMA	532	72" WMA Kiosk	44.99723, -112.15326
3	Wall Creek WMA	110	Montana Shaped Entry Monument *	45.05746, -111.66871
3	Wall Creek WMA	110	Montana Shaped Entry Monument *	45.06281, -111.71945
3	Wall Creek WMA	532	72" WMA Kiosk	45.06305, -111.71932
3	Wall Creek WMA	532	72" WMA Kiosk	45.04292, -111.68402

* Fabricated sign panels to be furnished by FWP and installed by Contractor.

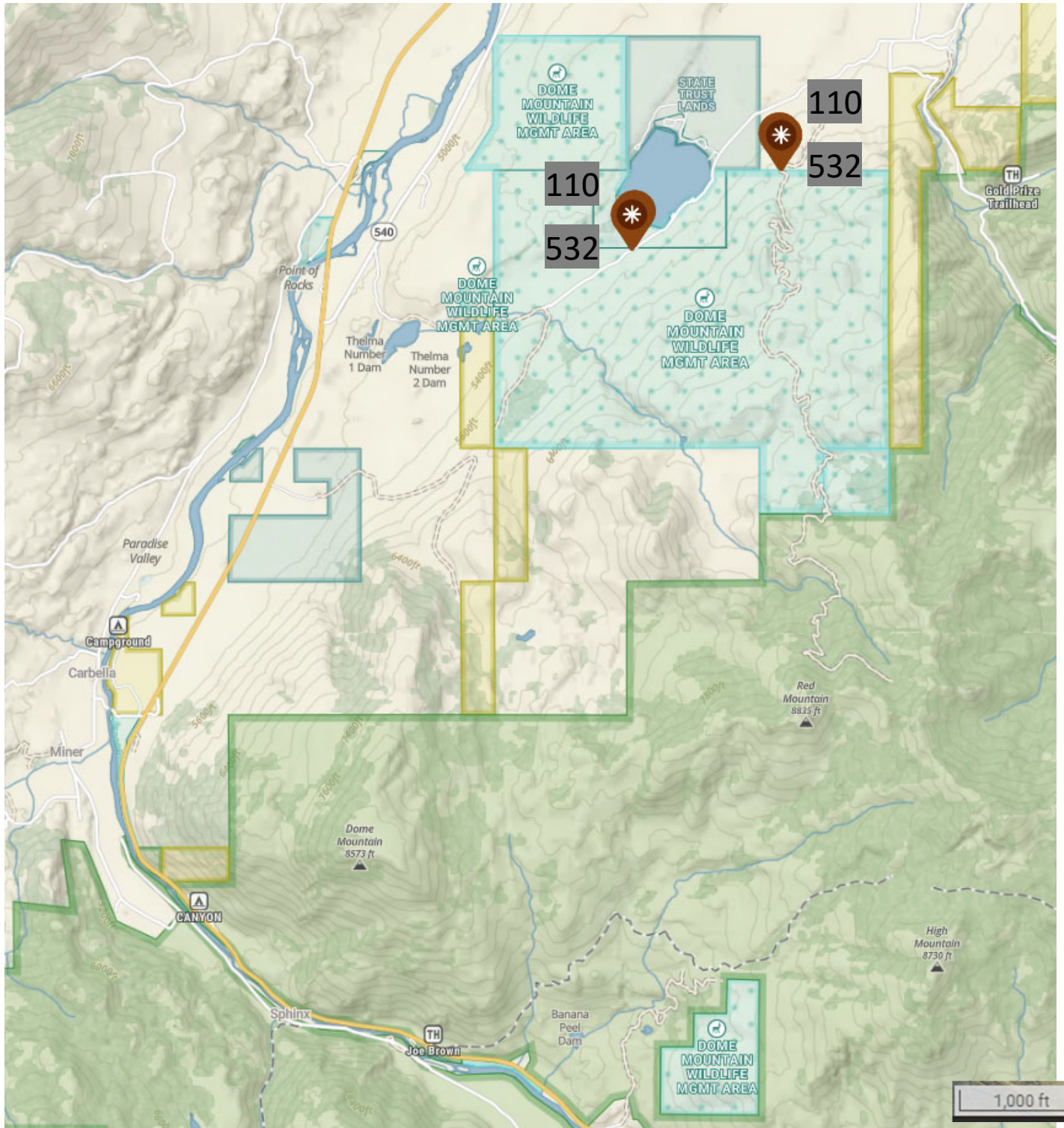


 Approximate Kiosk Location

Map produced by: FWP Design and Construction

Location Map provided for vicinity reference only. FWP shall stake locations of each kiosk prior to construction or utility locates.
Background Imagery from webmap.onxmaps.com

PROPOSED KIOSK LOCATION PLAN

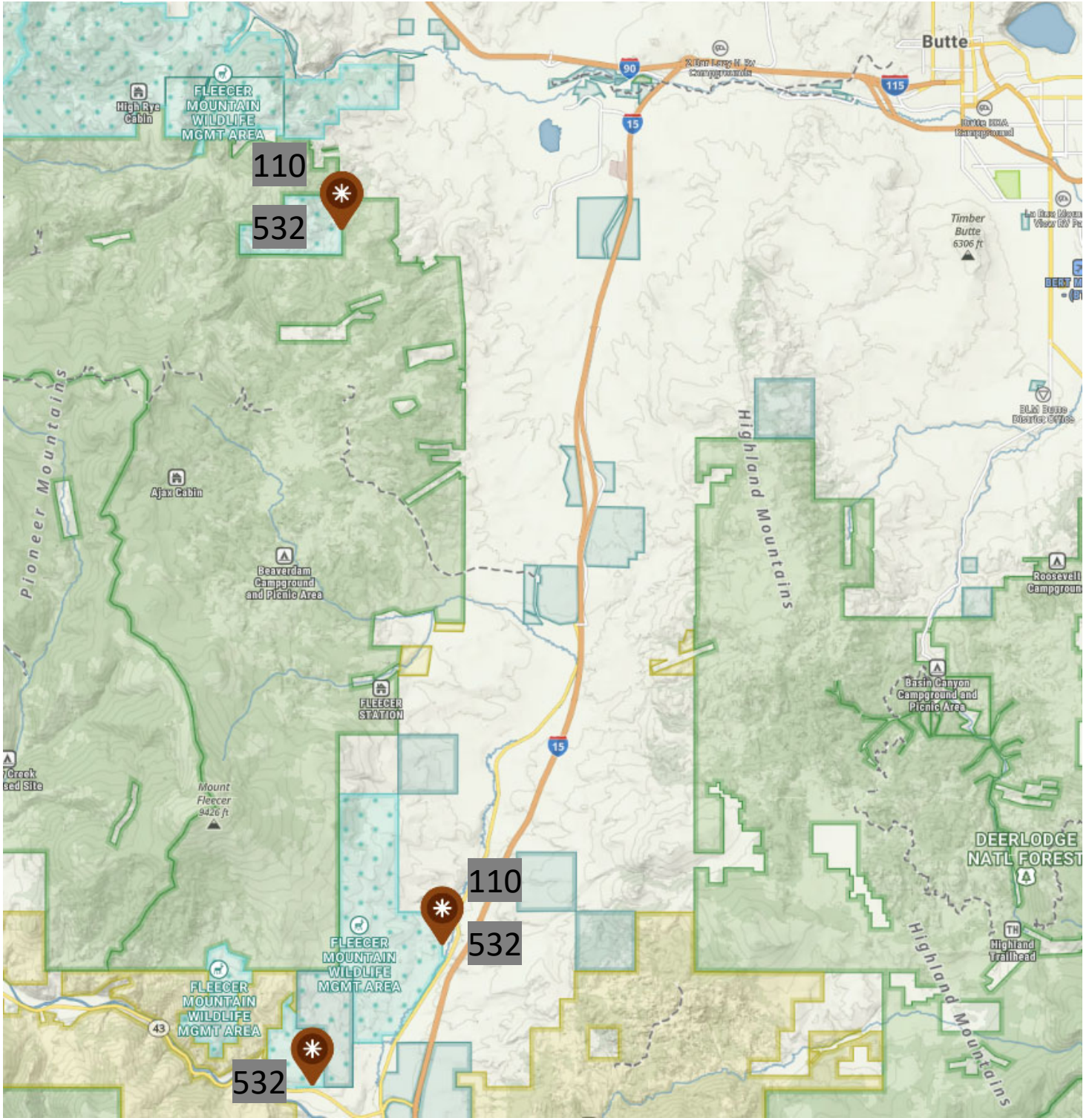


Approximate Kiosk Location

Map produced by: FWP Design and Construction

Location Map provided for vicinity reference only. FWP shall stake locations of each kiosk prior to construction or utility locates. Background Imagery from webmap.onxmaps.com

PROPOSED KIOSK LOCATION PLAN

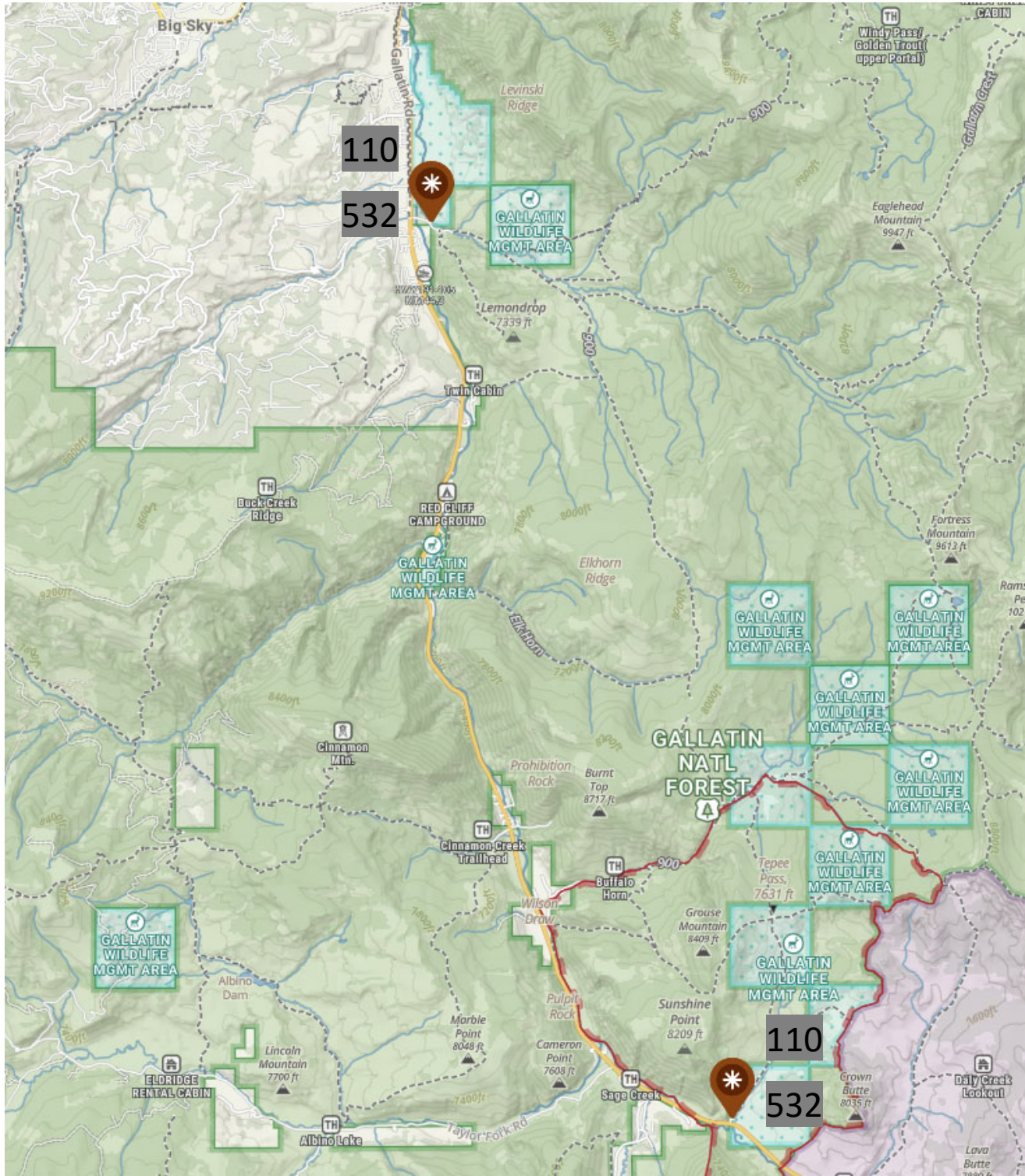


Approximate Kiosk Location

Map produced by: FWP Design and Construction

Location Map provided for vicinity reference only. FWP shall stake locations of each kiosk prior to construction or utility locates. Background Imagery from webmap.onxmaps.com

PROPOSED KIOSK LOCATION PLAN

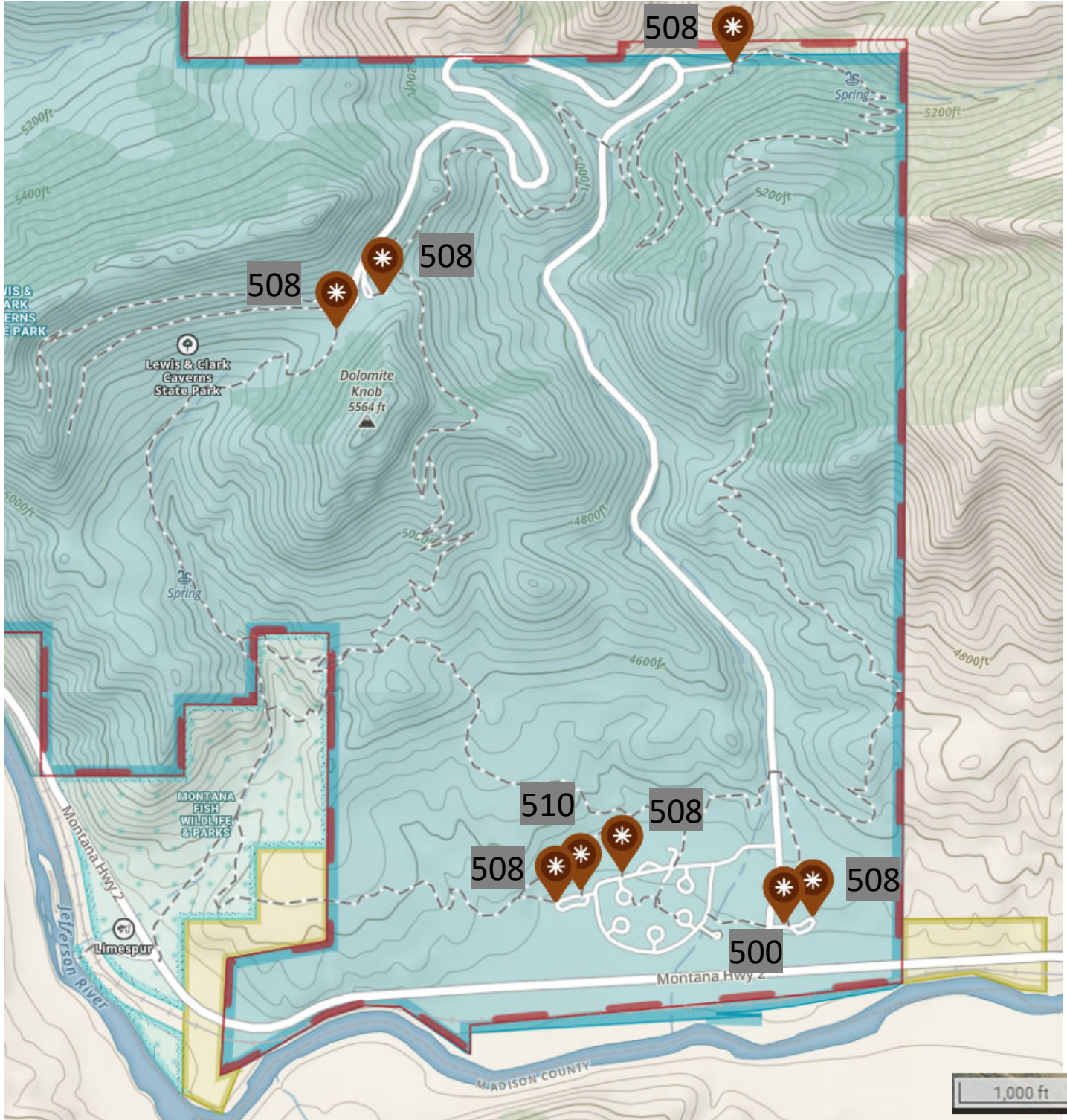


Approximate Kiosk Location

Map produced by: FWP Design and Construction

Location Map provided for vicinity reference only. FWP shall stake locations of each kiosk prior to construction or utility locates. Background Imagery from webmap.onxmaps.com

PROPOSED KIOSK LOCATION PLAN

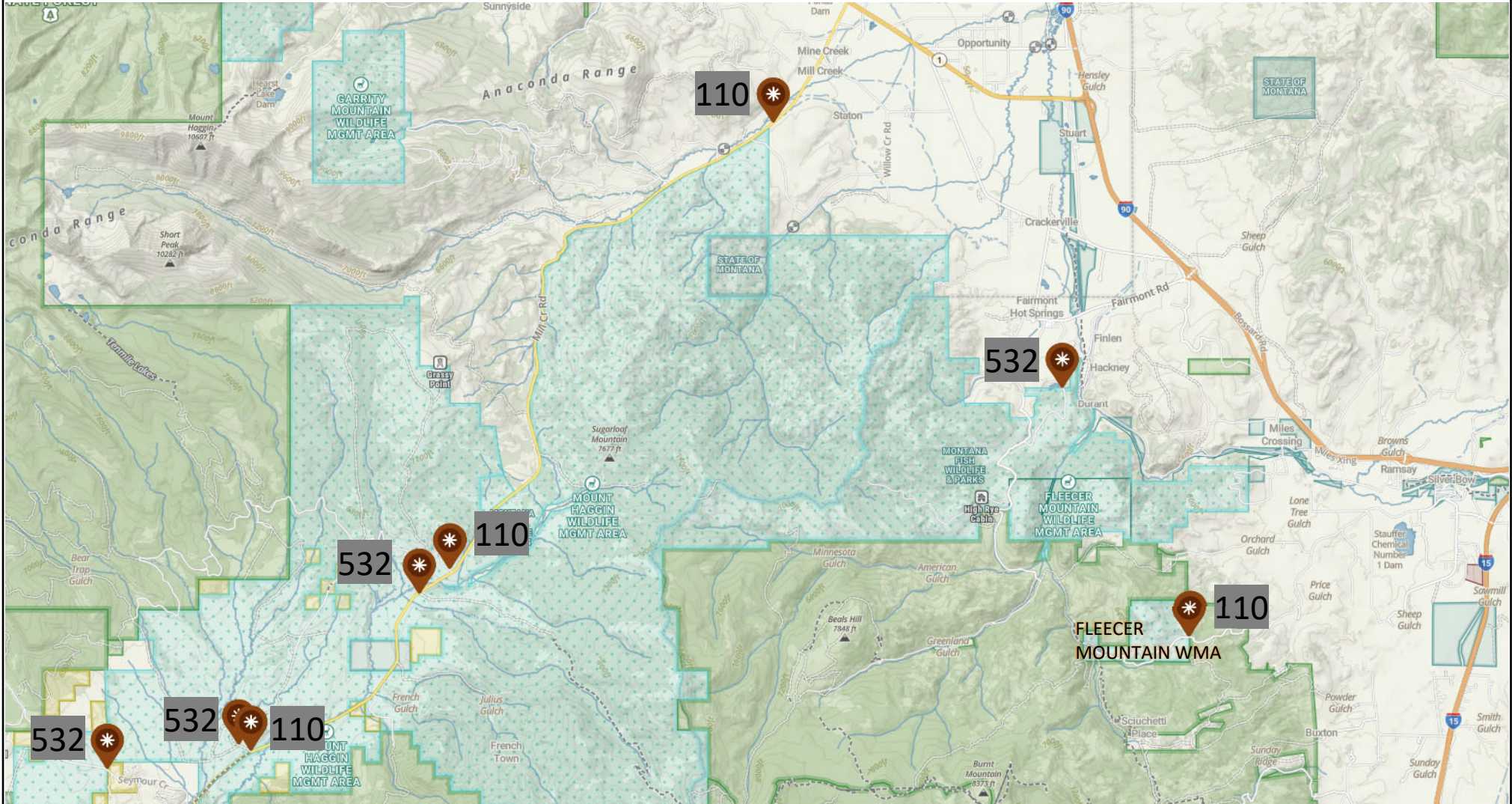


Approximate Kiosk Location

Map produced by: FWP Design and Construction

Location Map provided for vicinity reference only. FWP shall stake locations of each kiosk prior to construction or utility locates. Background Imagery from webmap.onxmaps.com

PROPOSED KIOSK LOCATION PLAN

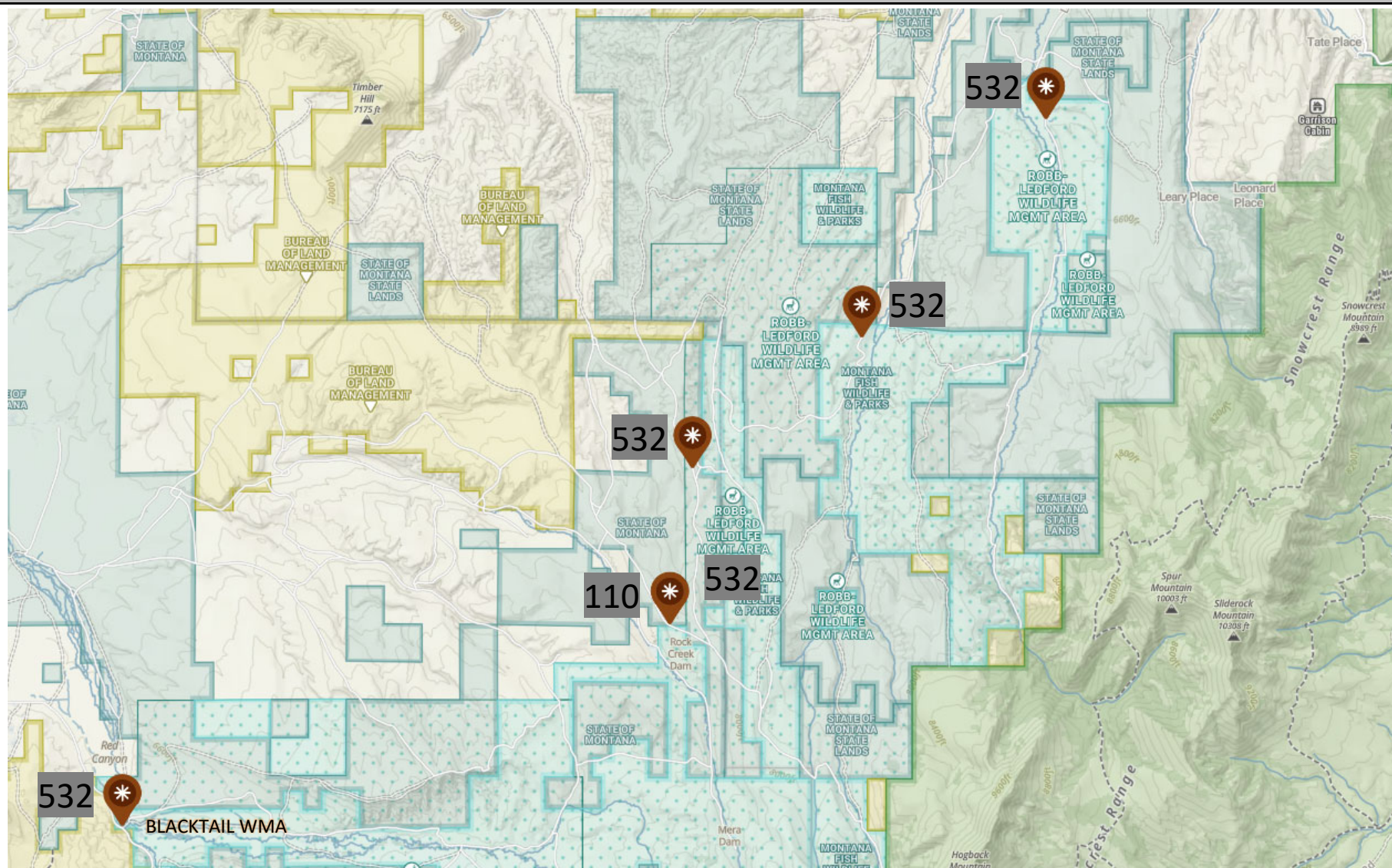


Approximate Kiosk Location

Map produced by: FWP Design and Construction

Location Map provided for vicinity reference only. FWP shall stake locations of each kiosk prior to construction or utility locates. Background Imagery from webmap.onxmaps.com

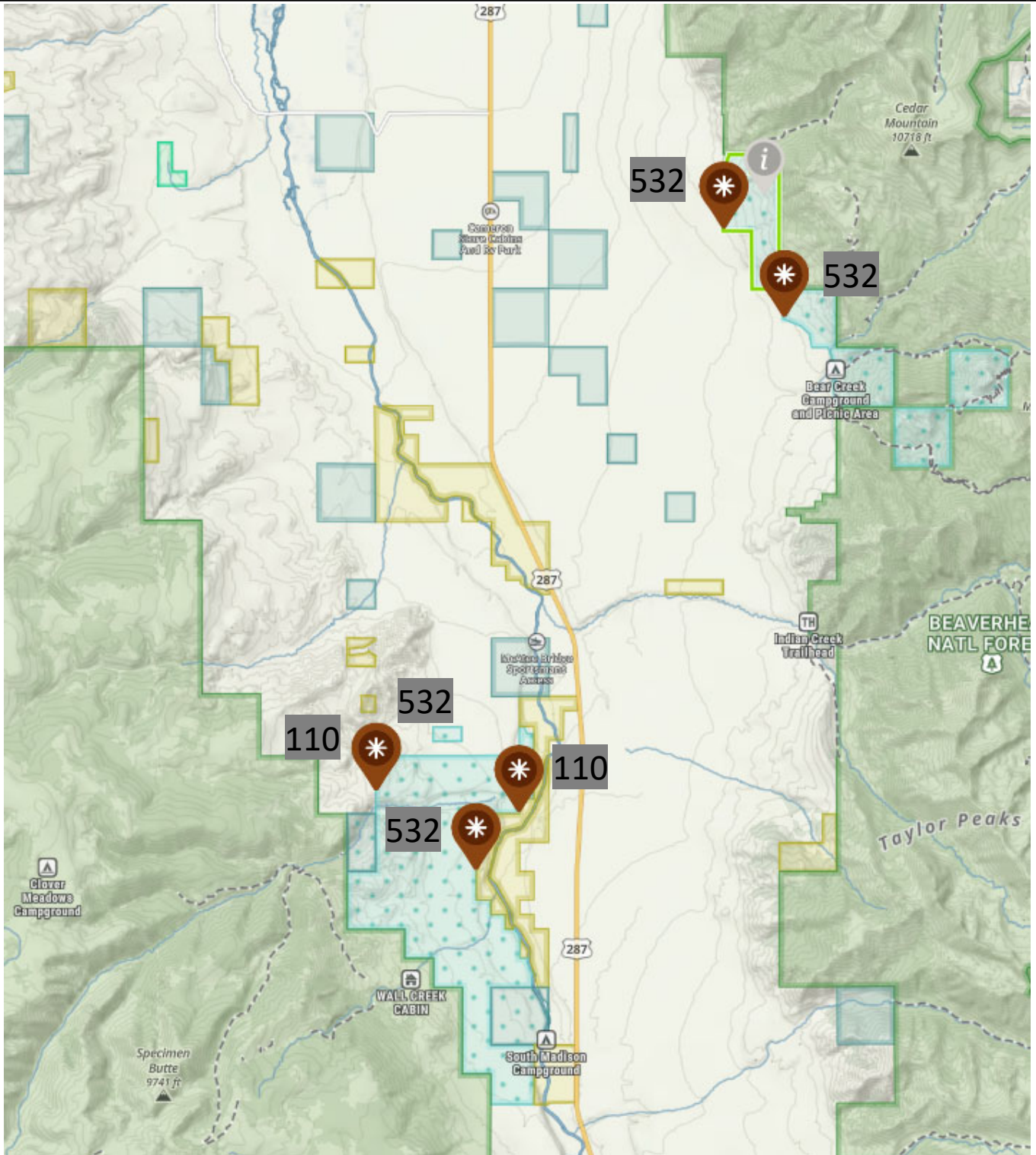
PROPOSED KIOSK LOCATION PLAN



Approximate Kiosk Location

Map produced by: FWP Design and Construction

PROPOSED KIOSK/SIGN LOCATION PLAN



Approximate Kiosk Location

Map produced by: FWP Design and Construction

Location Map provided for vicinity reference only. FWP shall stake locations of each kiosk prior to construction or utility locates.
Background Imagery from webmap.onxmaps.com