

REGION 2 KIOSK/SIGN LOCATIONS

MONTANAFWP

FWP Region	Site Name	Kiosk/Sign Type #	Kiosk/Sign Description	Location (Latitude, Longitude)
2	Russell Gates FAS	544	72" FAS Kiosk with Roof	47.022458, -113.307181
2	Russell Gates FAS	547	60" FAS Kiosk with Roof	47.022858, -113.307122
2	Aunt Molly WMA	530	Double 60" WMA Kiosk	46.918372, -113.013987
2	Blackfoot Clearwater WMA	530	Double 60" WMA Kiosk	47.042756, -113.385837
2	Blackfoot Clearwater WMA	530	Double 60" WMA Kiosk	46.999543, -113.383127
2	Blackfoot Clearwater WMA	530	Double 60" WMA Kiosk	47.050545, -113.261248
2	Blackfoot Clearwater WMA	530	Double 60" WMA Kiosk	47.021769, -113.033041
2	Blackfoot Clearwater WMA	530	Double 60" WMA Kiosk	47.042259, -113.387383
2	Blackfoot Clearwater WMA	532	72" WMA Kiosk	47.091585, -113.394658
2	Blackfoot Clearwater WMA	532	72" WMA Kiosk	47.100334, -113.334076
2	Blackfoot Clearwater WMA	532	72" WMA Kiosk	47.106577, -113.293303
2	Blackfoot Clearwater WMA	532	72" WMA Kiosk	47.106602, -113.282293
2	Blackfoot Clearwater WMA	532	72" WMA Kiosk	47.025534, -113.302661
2	Blackfoot Clearwater WMA	532	72" WMA Kiosk	47.042997, -113.261298
2	Blackfoot Clearwater WMA	532	72" WMA Kiosk	47.021993, -113.317245
2	Blackfoot Clearwater WMA	532	72" WMA Kiosk	47.012247, -113.330757
2	Blackfoot Clearwater WMA	532	72" WMA Kiosk	47.055084, -113.393261
2	Blue-Eyed Nellie WMA	532	72" WMA Kiosk	46.165076, -113.070991
2	Calf Creek WMA	532	72" WMA Kiosk	46.276882, -114.017733
2	Fish Creek WMA	530	Double 60" WMA Kiosk	46.994356, -114.674289
2	Fish Creek WMA	532	72" WMA Kiosk	47.042575, -114.671443

REGION 2 KIOSK/SIGN LOCATIONS

MONTANAFWP

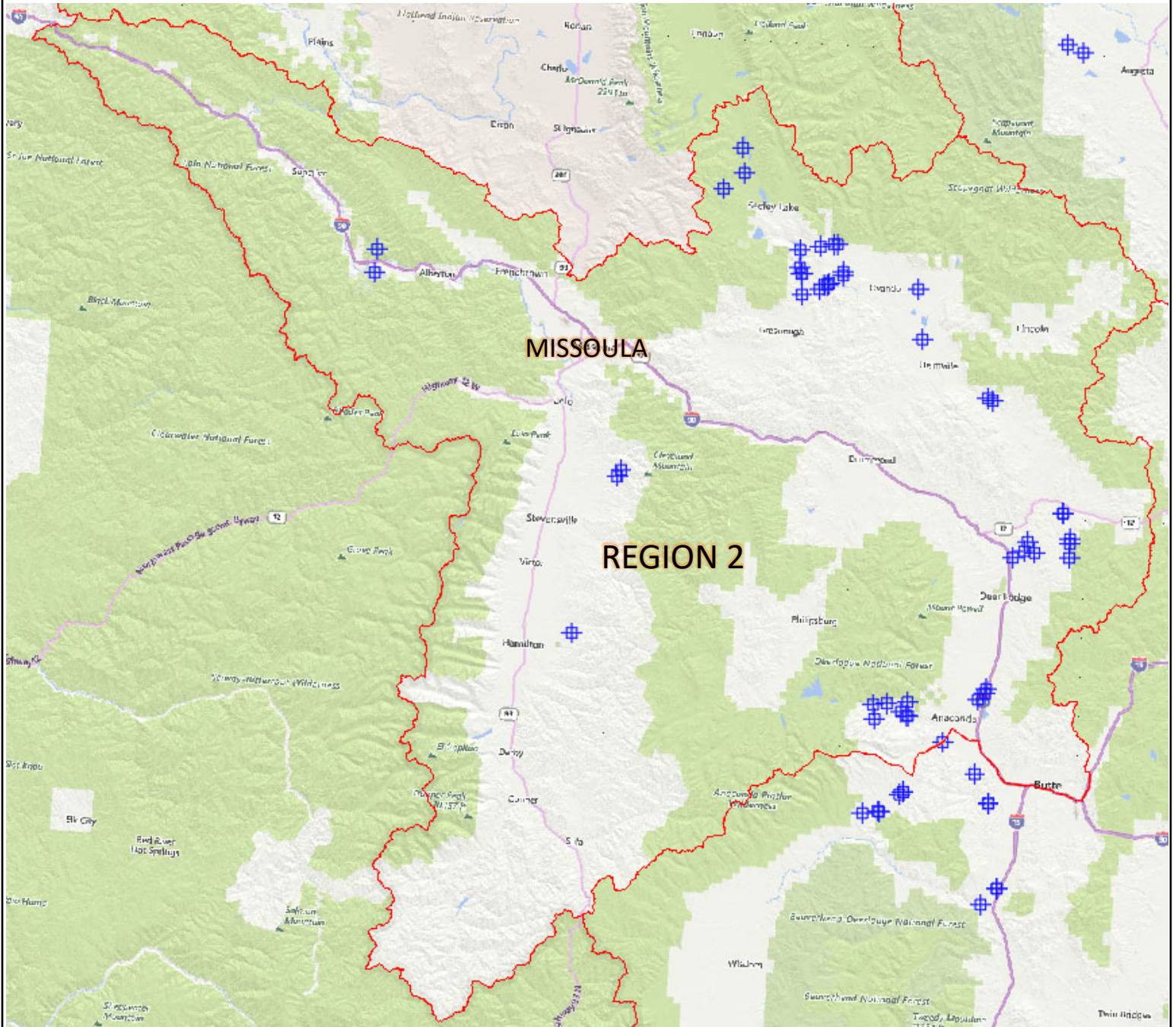
2	Garrity Mountain WMA	530	Double 60" WMA Kiosk	46.141693, -113.011034
2	Garrity Mountain WMA	530	Double 60" WMA Kiosk	46.160999, -113.111733
2	Garrity Mountain WMA	532	72" WMA Kiosk	46.140527, -113.006542
2	Garrity Mountain WMA	532	72" WMA Kiosk	46.148781, -113.027701
2	Garrity Mountain WMA	532	72" WMA Kiosk	46.13126, -113.105602
2	Marshall Creek WMA	530	Double 60" WMA Kiosk	47.295498, -113.584046
2	Marshall Creek WMA	530	Double 60" WMA Kiosk	47.244329, -113.574823
2	Marshall Creek WMA	533	Single 60" WMA Kiosk	47.209663, -113.635962
2	Nevada Lake WMA	530	Double 60" WMA Kiosk	46.803131, -112.808779
2	Nevada Lake WMA	533	Single 60" WMA Kiosk	46.798433, -112.794125
2	Spotted Dog WMA	110	Montana Shaped Entry Monument *	46.571225, -112.570021
2	Spotted Dog WMA	530	Double 60" WMA Kiosk	46.510128, -112.672149
2	Spotted Dog WMA	530	Double 60" WMA Kiosk	46.490864, -112.680634
2	Spotted Dog WMA	530	Double 60" WMA Kiosk	46.487984, -112.651014
2	Spotted Dog WMA	532	72" WMA Kiosk	46.476426, -112.715155
2	Spotted Dog WMA	532	72" WMA Kiosk	46.572042, -112.569254
2	Spotted Dog WMA	532	72" WMA Kiosk	46.519544, -112.545849
2	Spotted Dog WMA	532	72" WMA Kiosk	46.509904, -112.545849
2	Spotted Dog WMA	532	72" WMA Kiosk	46.480576, -112.545742
2	Stucky Ridge WMA	530	Double 60" WMA Kiosk	46.169471, -113.009819

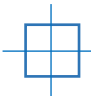
REGION 2 KIOSK/SIGN LOCATIONS

MONTANAFWP

2	Warm Springs WMA	532	72" WMA Kiosk	46.180742, -112.801280
2	Warm Springs WMA	532	72" WMA Kiosk	46.194286, -112.781292
2	Warm Springs WMA	533	Single 60" WMA Kiosk	46.167742, -112.500791
2	Warm Springs WMA	533	Single 60" WMA Kiosk	46.16840, -112.79706
2	3-Mile WMA	530	Double 60" WMA Kiosk	46.604758, -113.908951
2	3-Mile WMA	533	Single 60" WMA Kiosk	46.617977, -113.898676

* Fabricated sign panels to be furnished by FWP and installed by Contractor.

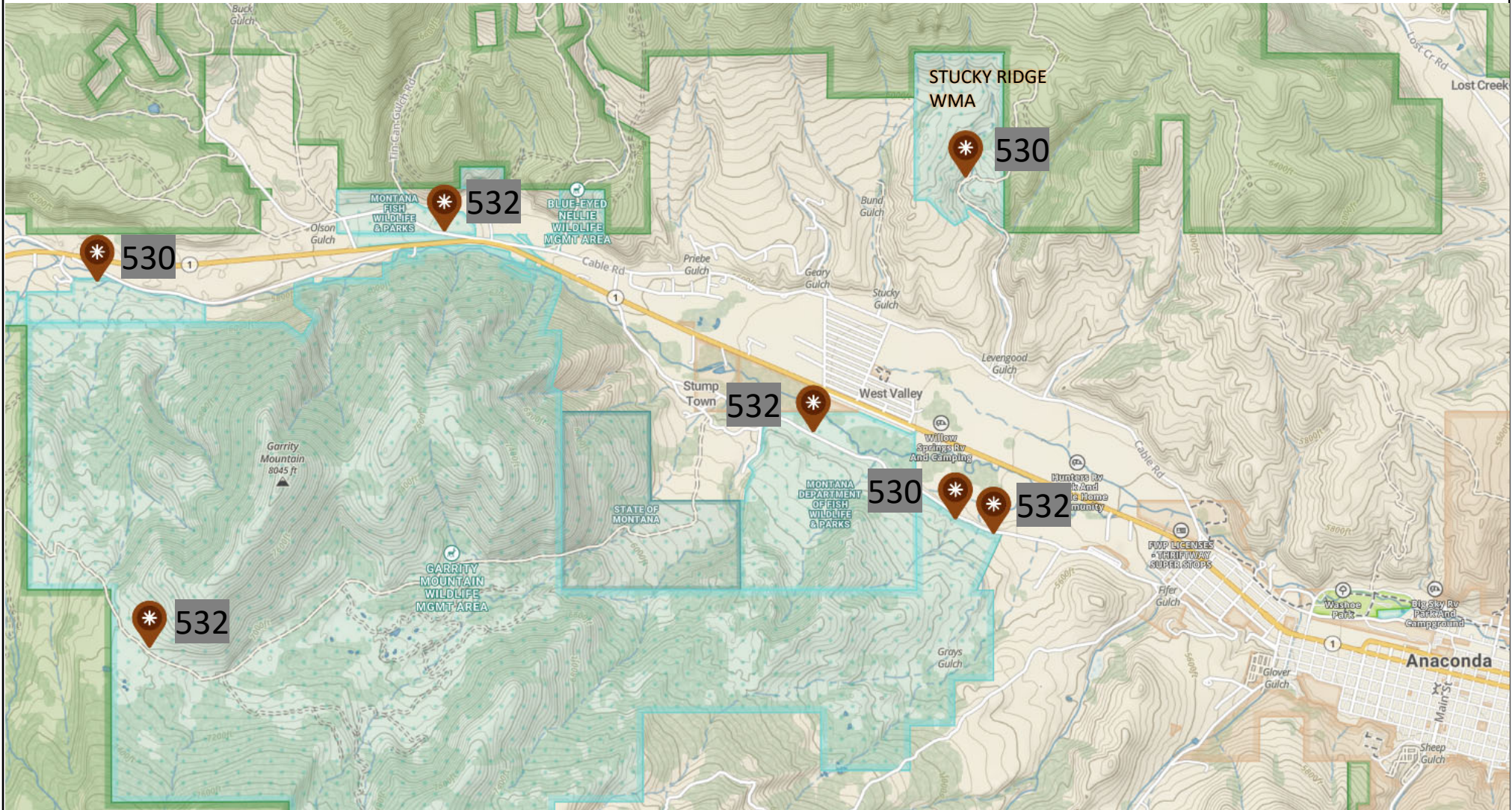


 Approximate Kiosk Location

Map produced by: FWP Design and Construction

Location Map provided for vicinity reference only. FWP shall stake locations of each kiosk prior to construction or utility locates. Background Imagery from webmap.onxmaps.com

PROPOSED KIOSK LOCATION PLAN

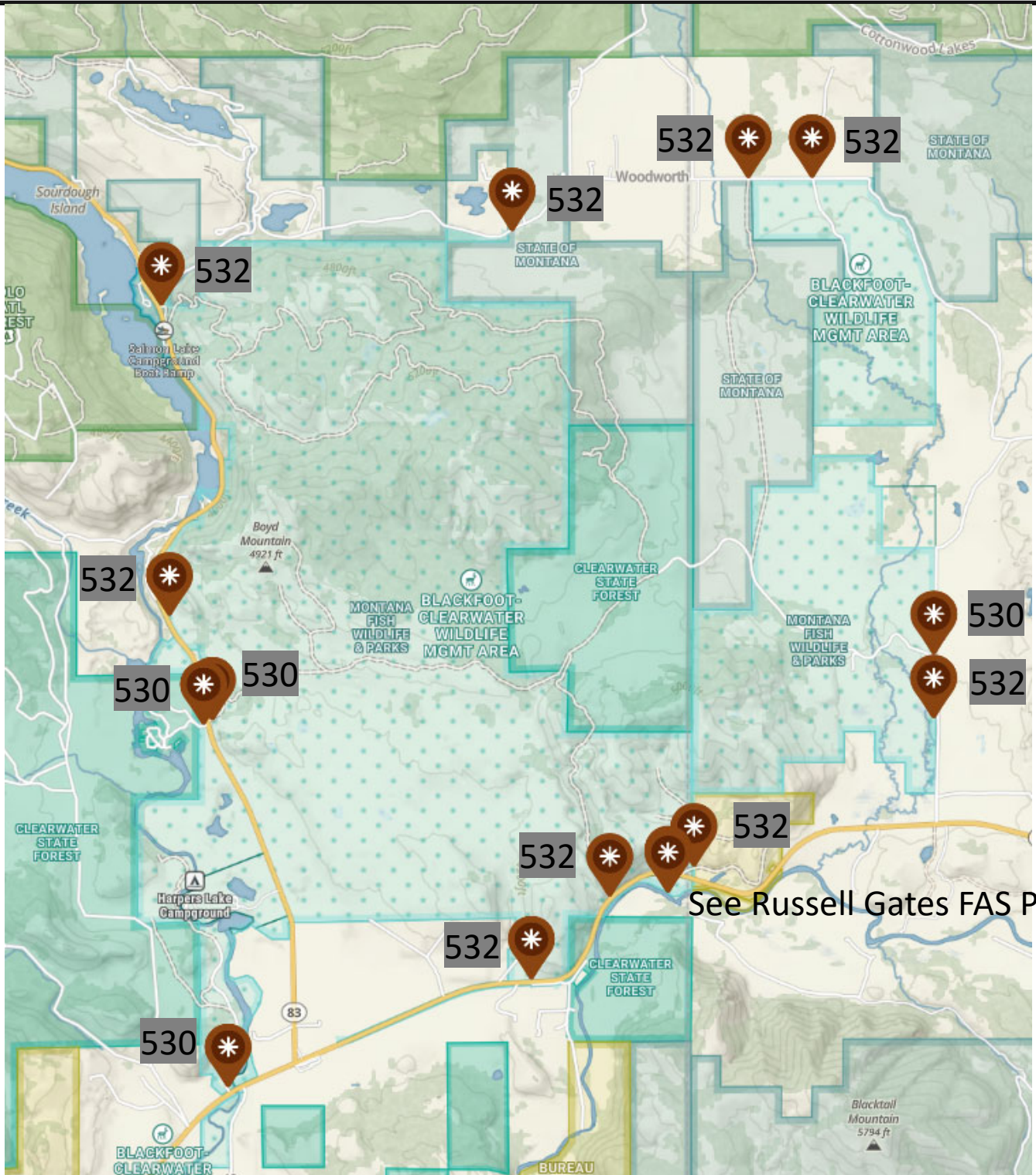


Approximate Kiosk Location

Map produced by: FWP Design and Construction

BLACKFOOT CLEARWATER WILDLIFE MANAGEMENT AREA MONTANA FWP

PROPOSED KIOSK/SIGN LOCATION PLAN



See Russell Gates FAS Plan



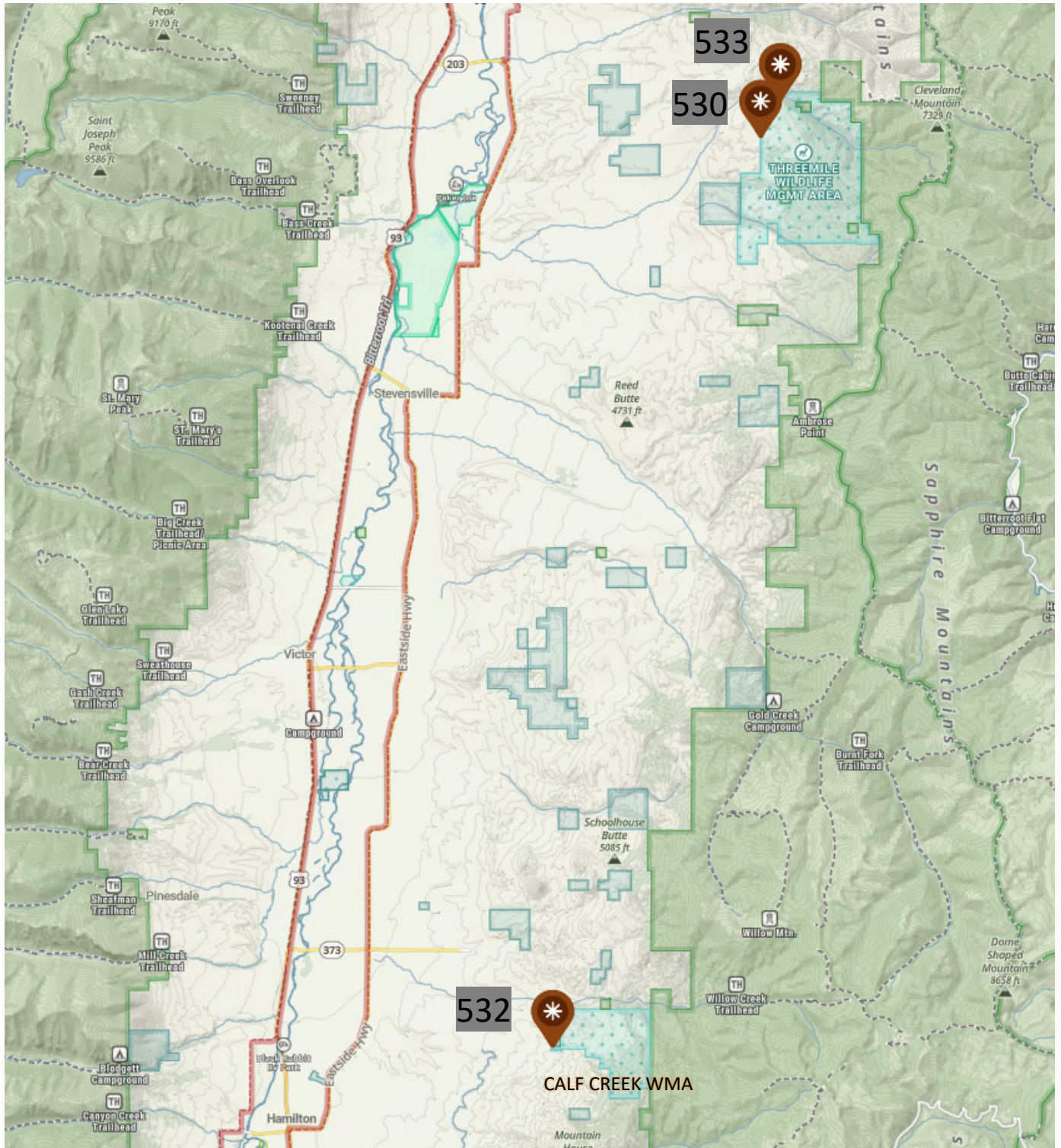
Approximate Kiosk Location

Map produced by: FWP Design and Construction

Location Map provided for vicinity reference only. FWP shall stake locations of each kiosk prior to construction or utility locates. Background Imagery from webmap.onxmaps.com

CALF CREEK/THREEMILE WILDLIFE MANAGEMENT AREAS MONTANAFWP

PROPOSED KIOSK LOCATION PLAN

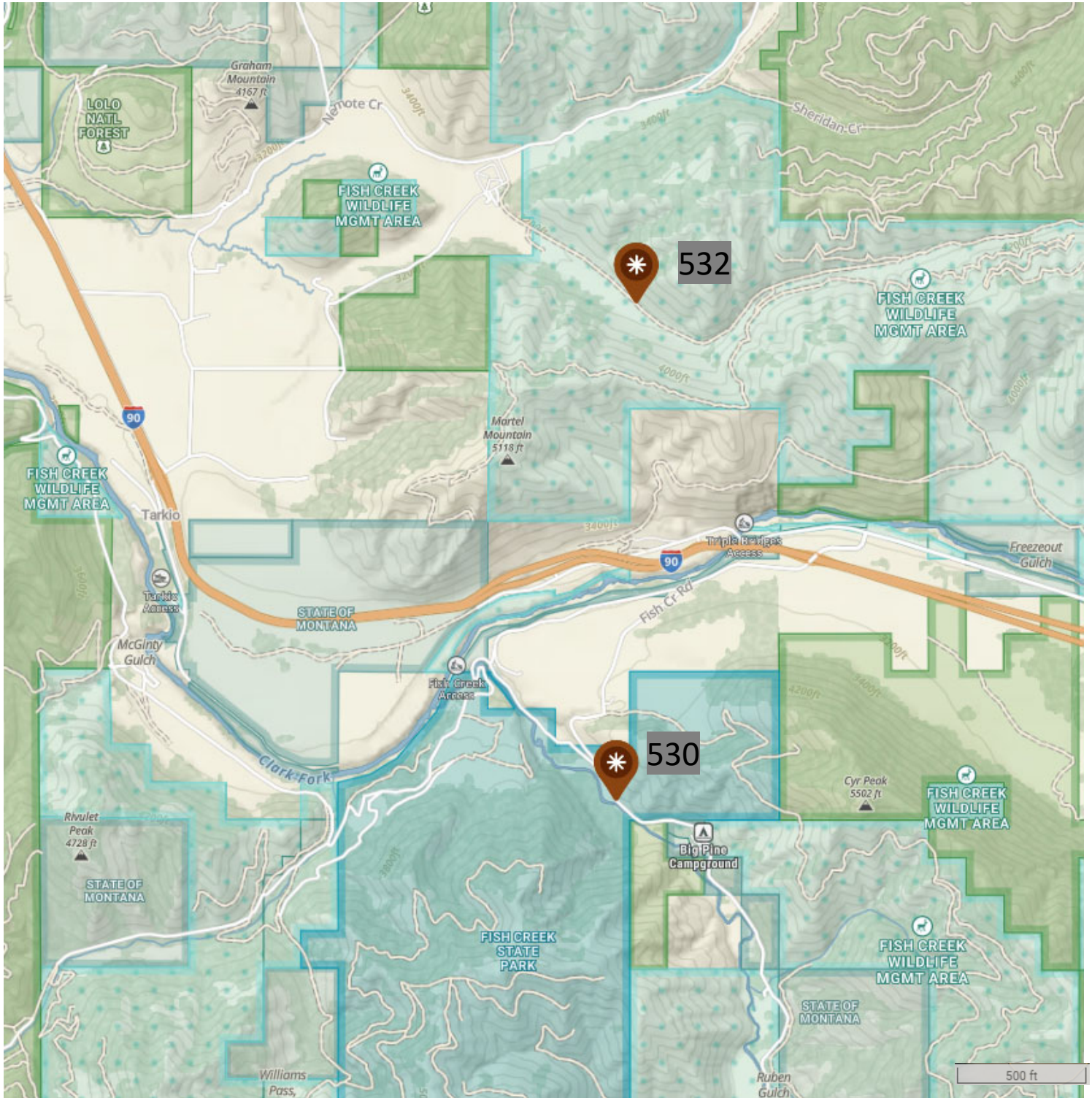


Approximate Kiosk Location

Map produced by: FWP Design and Construction

Location Map provided for vicinity reference only. FWP shall stake locations of each kiosk prior to construction or utility locates. Background Imagery from webmap.onxmaps.com

PROPOSED KIOSK LOCATION PLAN

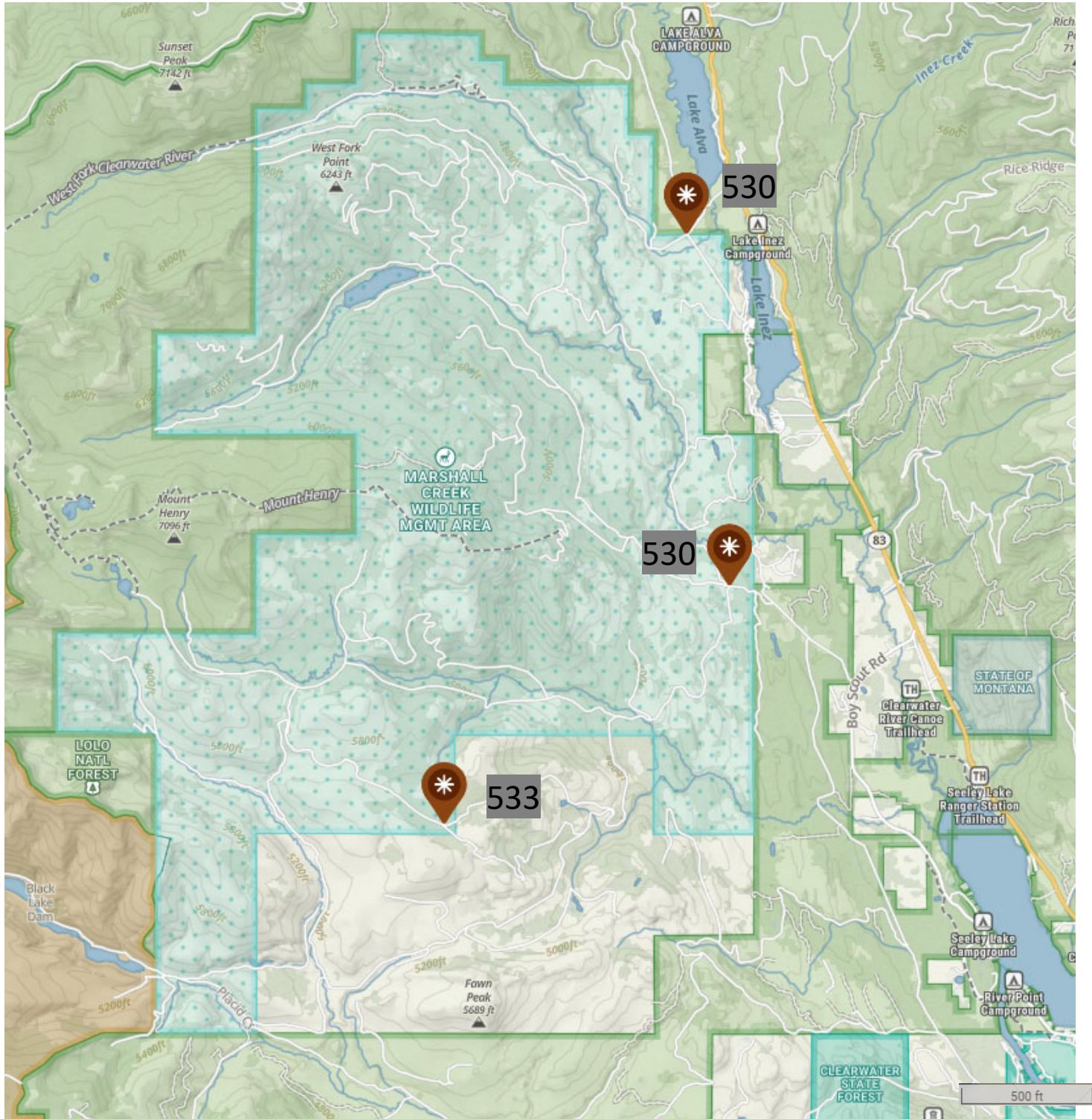


Approximate Kiosk Location

Map produced by: FWP Design and Construction

Location Map provided for vicinity reference only. FWP shall stake locations of each kiosk prior to construction or utility locates. Background Imagery from webmap.onxmaps.com

PROPOSED KIOSK LOCATION PLAN

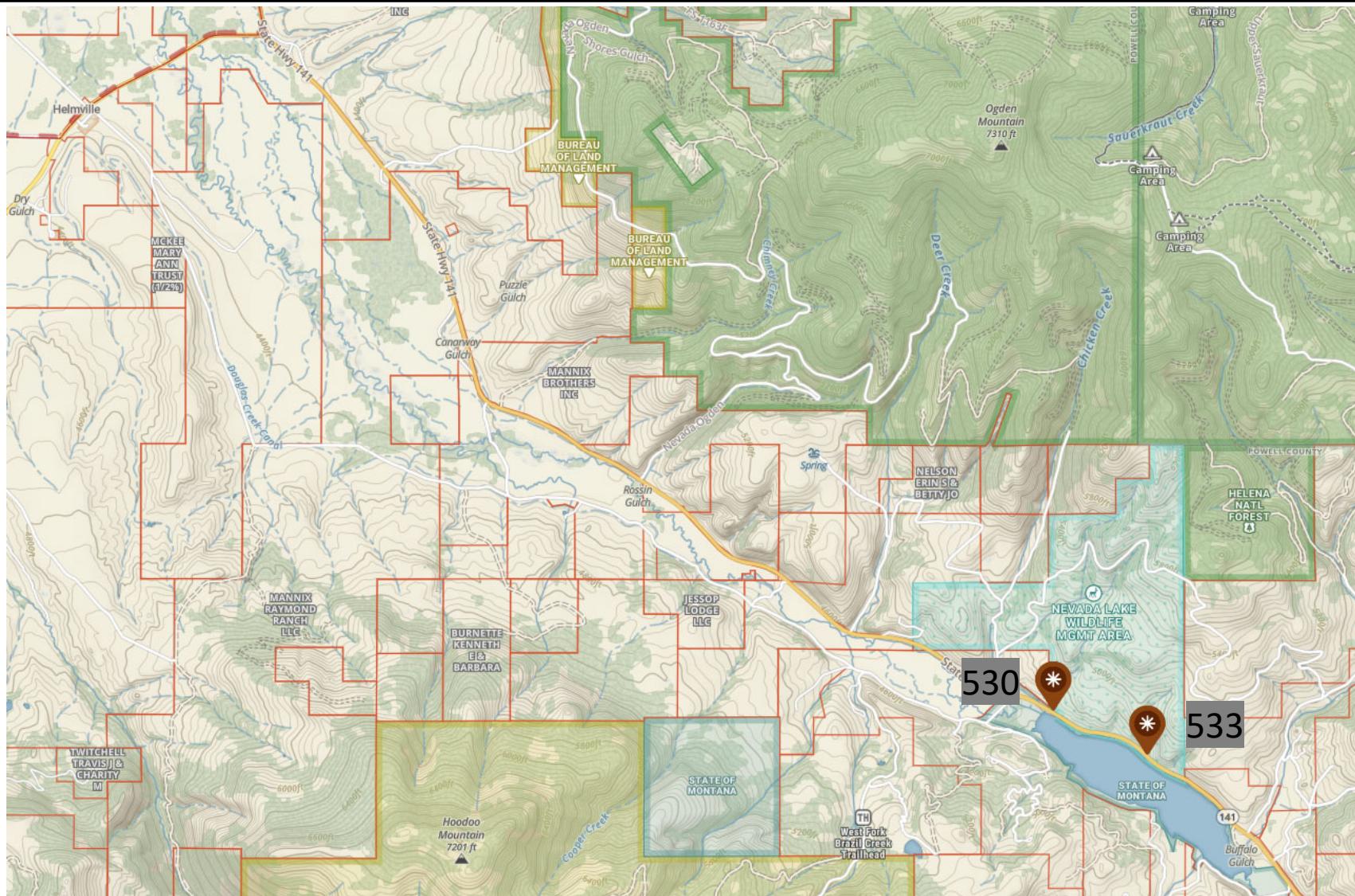


Approximate Kiosk Location

Map produced by: FWP Design and Construction

Location Map provided for vicinity reference only. FWP shall stake locations of each kiosk prior to construction or utility locates. Background Imagery from webmap.onxmaps.com

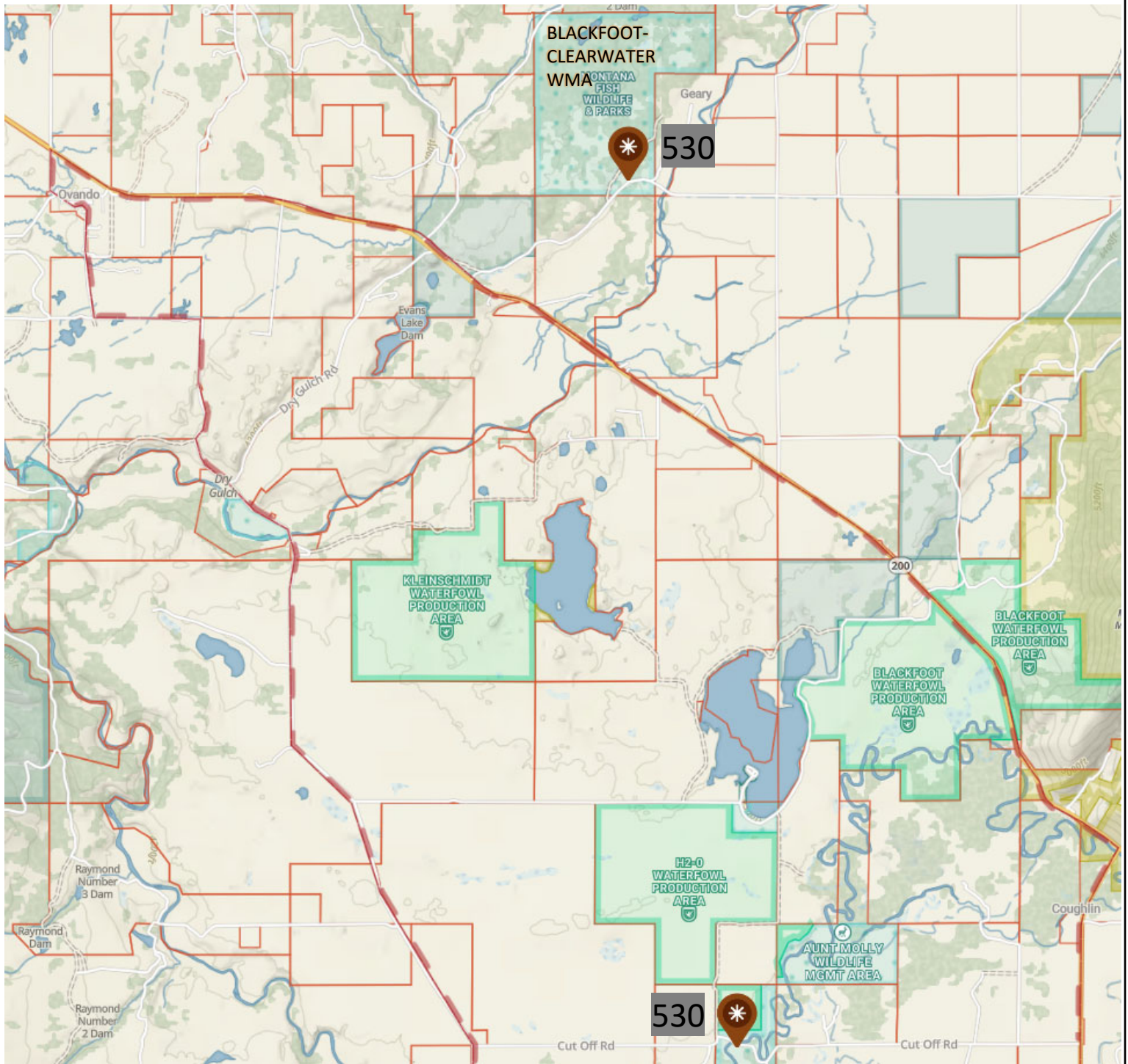
PROPOSED KIOSK LOCATION PLAN



Approximate Kiosk Location

Map produced by: FWP Design and Construction

PROPOSED KIOSK LOCATION PLAN



Approximate Kiosk Location

Map produced by: FWP Design and Construction

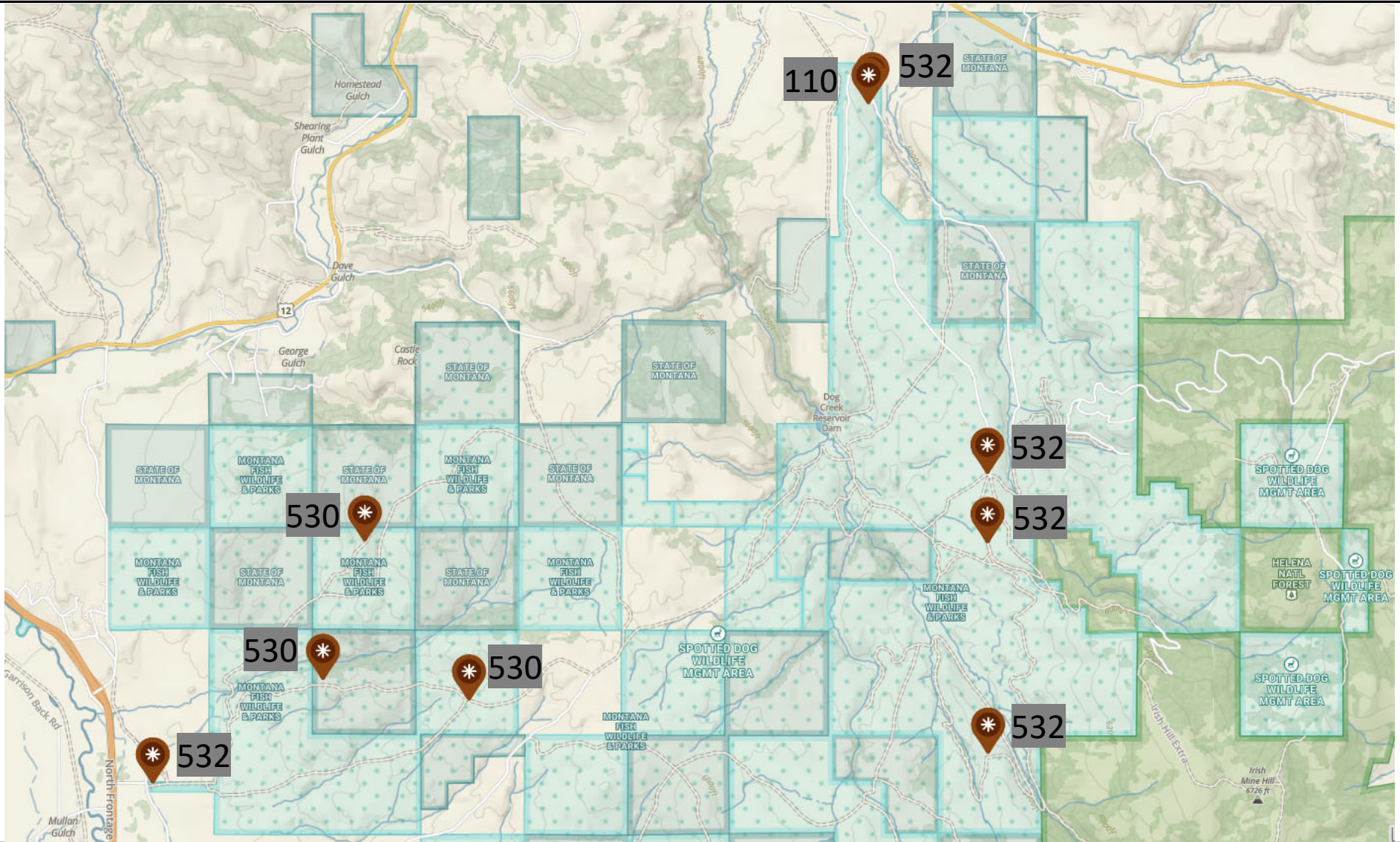
PROPOSED KIOSK LOCATION PLAN



Approximate Kiosk Location

Map produced by: FWP Design and Construction

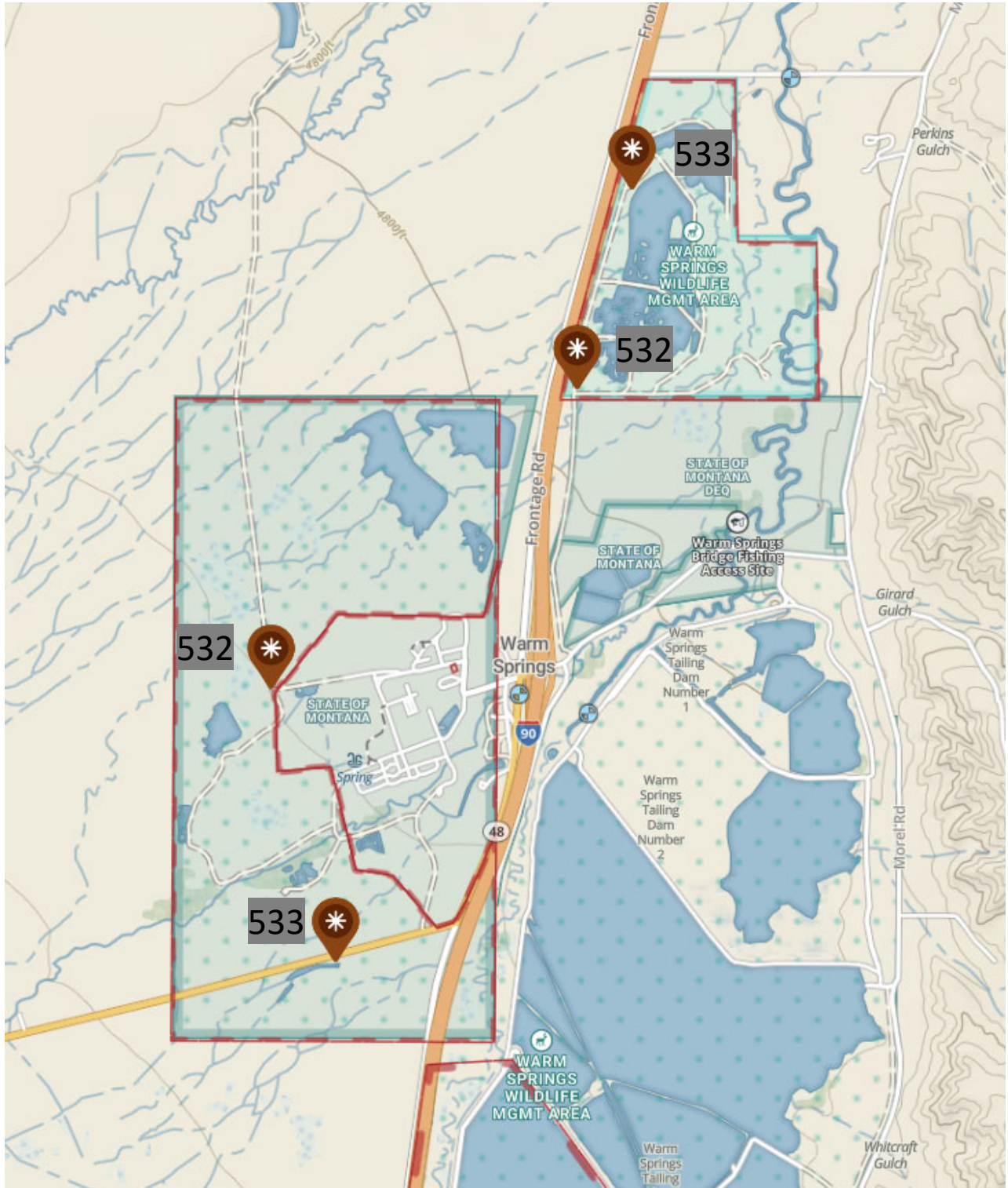
PROPOSED KIOSK LOCATION PLAN



Approximate Kiosk Location

Map produced by: FWP Design and Construction

PROPOSED KIOSK/SIGN LOCATION PLAN



Approximate Kiosk Location

Map produced by: FWP Design and Construction