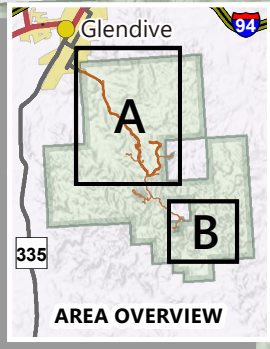
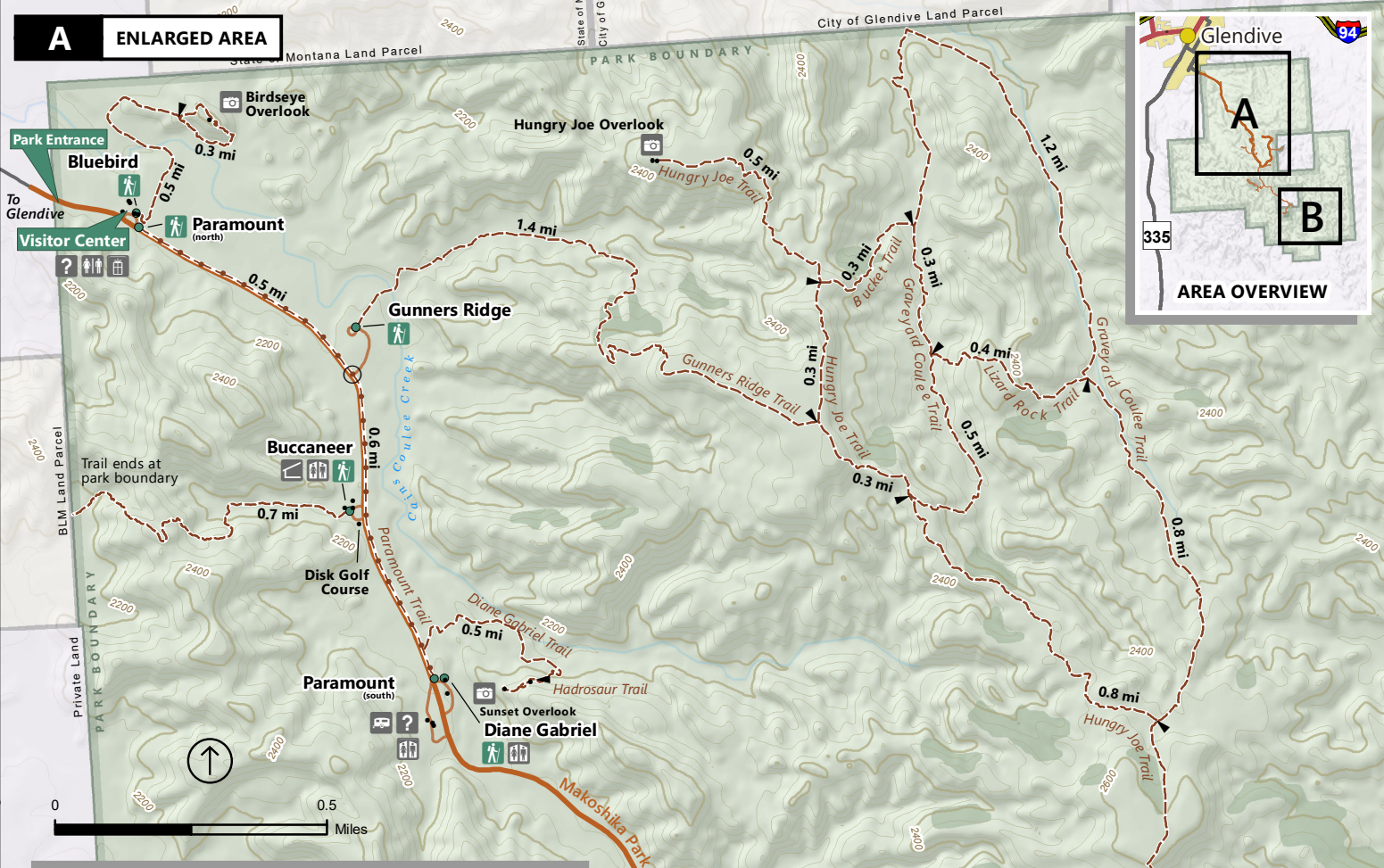
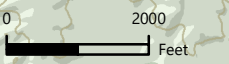
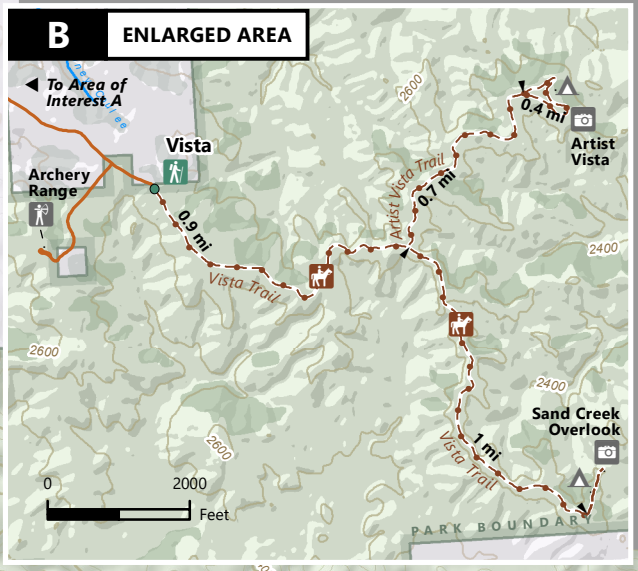




A ENLARGED AREA



B ENLARGED AREA



- | | | | | | |
|--|--------------------------|--|---------------------|------------------|--------------------|
| | Amphitheater | | Restroom (flush) | | Trailhead |
| | Campground | | Restroom (vault) | | Trail Access |
| | Campground (backcountry) | | Scenic Viewpoint | | Trail Intersection |
| | Campground (primitive) | | Visitor Information | TRAIL USE | |
| | Gift Shop | | Main Park Road | | Hiking |
| | Group Use Shelter | | Secondary Road | | Hiking, Biking |
| | Picnic Area | | Stream | | Horseback |

ALL TRAILS SHOULD BE CONSIDERED HAZARDOUS WHEN WET
Please consult park staff for current trail conditions. Trail lengths are in miles. Elevation levels are in feet. No claims are made to the accuracy of the data or its suitability to a particular use.

Makoshika State Park

Map Key

-  Visitor Center
-  Campground
-  Rustic Camping
-  Backcountry Site
-  Trailhead
-  Amphitheater
-  Group Use Shelter
-  Disc Golf Course
-  FWP Land Ownership
-  Other Land Ownership



This Park Encourages Leave No Trace Principles

- *Plan ahead & prepare.
- *Travel & camp on durable surfaces.
- *Dispose of waste properly.
- *Be considerate of other visitors.
- *Minimize campfire impacts.
- *Leave what you find.
- *Respect wildlife.




1 MILE



To Glendive