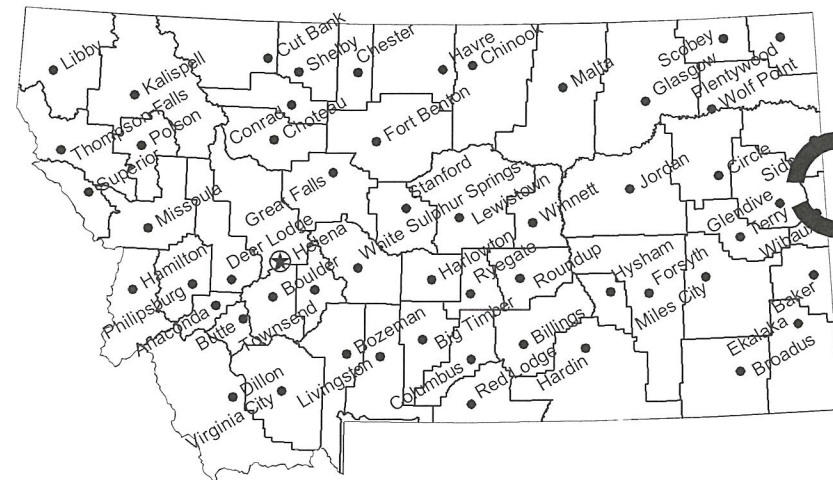


k:\sheridan\montana fish, wildlife and parks\2022\147 intake water system improvements\05\CAD\Sheets\PLAN\_SET\22147\_COVR\_SHT.dwg COVER 1/16/2023 10:07:08 AM

# MONTANA FISH, WILDLIFE & PARKS INTAKE FISHING ACCESS SITE WATER SYSTEM IMPROVEMENTS

near Intake, Dawson County, Montana

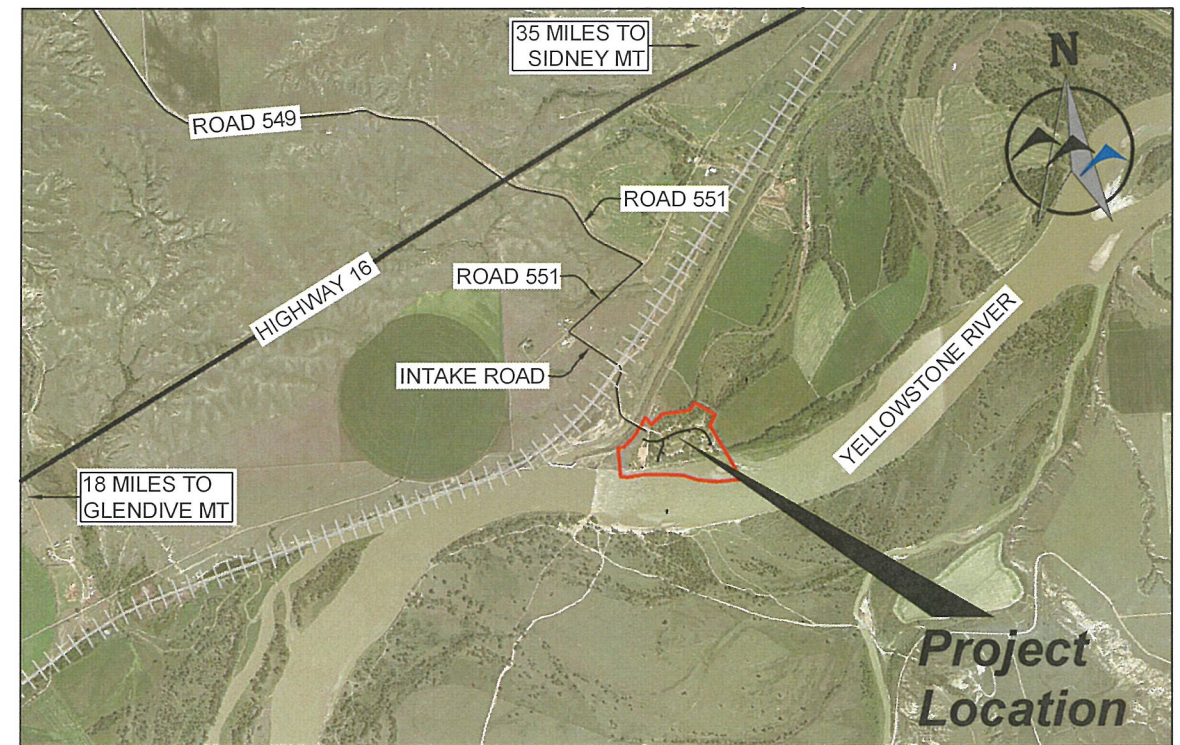
FWP PROJECT # 7153750



**Project Location**

**Location Map**

No Scale



**Vicinity Map**

0 1500' 3000'  
SCALE: 1" = 3000'  
11" x 17" PAPER SIZE

**MONTANA FISH, WILDLIFE AND PARKS  
DESIGN AND CONSTRUCTION**

MAILING ADDRESS: PO BOX 200701  
HELENA, MT 59620-0701  
TEL 406.841.4000  
FAX 406.841.4004  
fwp.mt.gov/Doing Business/Design&Construction

PHYSICAL ADDRESS: 1522 9th AVENUE  
HELENA, MT 59601

**DRAWING INDEX**

Sheet Number	Sheet Title
1	COVER SHEET
2	GENERAL NOTES
3	SITE LAYOUT
4	PLAN AND PROFILE
5	PLAN AND PROFILE
6	PLAN AND PROFILE
7	PLAN AND PROFILE
8	DETAILS
9	HYDRANT FILL STATION



CIG 6/14/2022  
DRAWN BY: DATE:  
CRW 6/14/2022  
CHECKED BY: DATE:

REVISED BY: DATE:  
APPROVED BY: DATE:

APPROVED BY: DATE:  
APPROVED BY: DATE:



**MONTANA FISH,  
WILDLIFE & PARKS**

123

**INTAKE FISHING ACCESS SITE  
WATER SYSTEM IMPROVEMENTS - COVER SHEET**

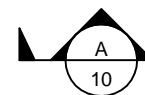
SHEET: 1 of 9

k:\Sherdan\montana\_fish\_wildlife\_and\_parks\2022\147\_intake\_water\_system\_improvements\05\CAD\Sheets\PLAN\_SET\022147\_COVR\_SHT.dwg GENERAL NOTES 1/16/2023 10:07:09 AM

**GENERAL CONSTRUCTION NOTES**

- UNLESS SPECIFICALLY SHOWN ON THE DRAWINGS, ALL WORK SHALL CONFORM TO MPWSS, LATEST EDITION, DEQ CIRCULARS 1 AND 4, AND THESE PLANS.
- THE CONTRACTOR SHALL BE RESPONSIBLE FOR ALL PERMITS REQUIRED AND CONSTRUCTION TESTING FOR CONSTRUCTION ACTIVITIES.
- THE CONTRACTOR SHALL RESTORE ALL ROADWAY TO EQUAL OR BETTER CONDITION THAN EXISTED PRIOR TO CONSTRUCTION, AS DETERMINED BY THE OWNER AND THE ENGINEER.
- THE LOCATION, DEPTH AND SIZE OF EXISTING UTILITIES SHOWN ON THESE PLANS ARE APPROXIMATE. THE CONTRACTOR SHALL FIELD VERIFY THE EXISTENCE, LOCATION, DEPTH, SIZE, LINE AND GRADE OF EXISTING UTILITY CONNECTIONS PRIOR TO CONSTRUCTION. THE CONTRACTOR SHALL BE RESPONSIBLE FOR ANY DAMAGE TO THE EXISTING FACILITIES DUE TO FAILURE TO LOCATE OR PROVIDE PROPER PROTECTION WHEN LOCATION IS KNOWN.
- ALL BACKFILL FOR UTILITY TRENCHES SHALL BE TYPE "A," UTILIZING TYPE 1 BEDDING, UNLESS DIRECTED OTHERWISE BY ENGINEER. SPECIFIED BEDDING SHALL BE FROM 4" BENEATH THE PIPE TO 6" ABOVE THE TOP OF PIPE (SEE MPWSS STANDARD DRAWING 02221-1). THE COST OF THIS ADDITIONAL BEDDING SHALL BE INCLUDED IN THE UNIT PRICE BID.
- PIPE BEDDING (TYPE 1) AND TRENCH BACKFILL (TYPE B) SHALL BE IN ACCORDANCE WITH MPW STANDARD SPECIFICATION 02221, STANDARD DRAWING 02221-1.
- THE CONTRACTOR IS RESPONSIBLE FOR CONTROLLING DUST AND EROSION DURING CONSTRUCTION AT CONTRACTOR'S EXPENSE. EROSION SHALL BE CONTROLLED IN ACCORDANCE WITH MONTANA DEPARTMENT OF ENVIRONMENTAL QUALITY REGULATIONS.
- ALL PROFILES REPRESENT EXISTING GROUND (DASHED LINE) AND FINISHED GRADE (SOLID LINE) ALONG THE ALIGNMENTS INDICATED ON THE PLANS. ELEVATIONS ARE FINISHED GROUND ELEVATIONS.
- ALL DISTURBED AREAS SHALL BE SEEDED BY THE CONTRACTOR USING A SEED MIX APPROVED BY THE OWNER OR THE LOCAL USDA OFFICE.
- THE CONTRACTOR SHALL BE RESPONSIBLE FOR COORDINATION OF UTILITY (PHONE/POWER/CATV) INSTALLATION WITH LOCAL UTILITY COMPANIES.
- THE CONTRACTOR SHALL NOTIFY ONE CALL @ 1-800-424-5555 FOR ONSITE UTILITY LOCATION. ALL EXISTING UTILITIES SHALL BE MARKED BEFORE DIGGING.
- THE CONTRACTOR SHALL MAINTAIN SERVICE OF ALL EXISTING UTILITIES. IF SAID SERVICE IS DAMAGED, THE CONTRACTOR SHALL IMMEDIATELY REPAIR THE DAMAGE AT THE CONTRACTOR'S EXPENSE.
- THE CONTRACTOR SHALL NOTIFY THE ENGINEER A MINIMUM OF 48 HOURS PRIOR TO BEGINNING ANY WORK.
- ALL UTILITY CONDUITS FOR IRRIGATION, ELECTRICAL, GAS, PHONE, CATV, ETC. SHALL BE BURIED A MINIMUM 24" FROM FINISHED GRADE WITH TYPE A BACKFILL, UTILIZING TYPE 1 BEDDING, UNLESS DIRECTED OTHERWISE BY ENGINEER.
- IF THE CONTRACTOR DETERMINES THE NEED TO DISTURB MORE THAN 1.0 ACRE DURING THE CONSTRUCTION OF THE PROJECT, THE CONTRACTOR SHALL BE RESPONSIBLE FOR OBTAINING AN MPDES PERMIT AND COMPLYING WITH ALL TERMS OF THE PERMIT. NO SEPARATE PAYMENT WILL BE MADE FOR THIS WORK.
- QUANTITIES SHOWN IN THESE PLANS ARE FOR INFORMATIONAL PURPOSES ONLY. THE CONTRACTOR SHALL BE RESPONSIBLE FOR DETERMINING ACTUAL QUANTITIES.
- ALL WATER PIPING BURIED OR EXPOSED TO BE PAINTED OR MARKED WITH THE COLOR BLUE. BURIED PIPE TO BE LOCATED WITH "WATER" TRACE TAPE.
- ALL BURIED FITTINGS, VALVES, AND APPURTENANCES TO BE ENCASED IN POLYETHYLENE WRAP AND HAVE CATHODIC PROTECTION (PROMAG H-1 20D2), OR BE COMPLETELY ENCASED IN CONCRETE.
- ALL WATER CONTACT MATERIALS AND CHEMICALS MUST MEET APPROPRIATE ANSI / AWWA OR ANSI / NSF STANDARDS. PROVIDE ALL CHEMICAL AND WATER CONTACT MATERIAL SUBMITTALS TO ENGINEER FOR APPROVAL PRIOR TO PROCUREMENT.
- SOLDERS AND FLUX CONTAINING MORE THAN 0.2 PERCENT LEAD AND PIPE FITTINGS CONTAINING MORE THAN 8 PERCENT LEAD MUST NOT BE USED ON SERVICE CONNECTIONS.
- CONTRACTOR TO COORDINATE ACCESS ROUTE AND STAGING AREA WITH OWNER
- ALL PROPOSED PIPE AND APPURTENANCES SHALL HAVE A MINIMUM BURY OF 6 FEET AND BE CERTIFIED LEAD-FREE AND DRINKING WATER SAFE.
- ALL 2-INCH HDPE PIPE BENDS SHALL BE INSTALLED WITH A MINIMUM BEND RADIUS OF 30 TIMES THE OUTSIDE PIPE DIAMETER.
- MAINTAIN AT LEAST A 10-FOOT OFFSET, EDGE-TO-EDGE FROM EXISTING GRAVITY SANITARY OR STORM SEWER, SEPTIC TANKS, OR SUBSOIL TREATMENT SYSTEM.

**DRAWING NOTATION**



INDICATES CROSS SECTION LOCATION. "A" REFERS TO THE CROSS SECTION DESIGNATION. "10" REFERS TO THE SHEET NUMBER WHERE THE SECTION IS CUT OR SHOWN.



INDICATES DETAIL LOCATION. "1" REFERS TO THE DETAIL DESIGNATION. "12" REFERS TO THE SHEET NUMBER WHERE THE DETAIL IS INDICATED OR SHOWN.

**BLOCK LEGEND**

EXISTING	PROPOSED	EXISTING	PROPOSED	EXISTING	PROPOSED

**LINE STYLE LEGEND**

EXISTING	PROPOSED	
		MAJOR CONTOUR
		MINOR CONTOUR
		OVERHEAD TELEPHONE
		OVERHEAD POWER
		NATURAL GAS
		IRRIGATION LINE
		FIBER OPTIC
		FORCEMAIN
		FENCE [CHAIN]
		FENCE [BARBED]
		FENCE [PRIVACY]
		FIRE LINE
		OVERHEAD TV
		RAW WATER
		SEWER
		STORM
		UNDERGROUND POWER
		UNDERGROUND TELEPHONE
		UNDERGROUND TV
		WATER

CIG DATE: 6/14/2022  
 DRAWN BY: DATE:  
 CRW DATE: 6/14/2022  
 CHECKED BY: DATE:

REVISED BY: DATE:  
 APPROVED BY: DATE:

APPROVED BY: DATE:  
 APPROVED BY: DATE:



**MONTANA FISH, WILDLIFE & PARKS**

**INTAKE FISHING ACCESS SITE**  
**WATER SYSTEM IMPROVEMENTS - GENERAL NOTES**

SHEET: 2 of 9

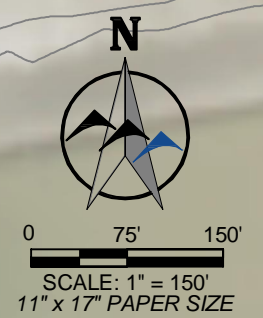
k:\Sheldonia\montana\_fish\_wildlife\_and\_parks\2022\147\_intake\_fishing\_access\_site\_water\_system\_improvements\05\CAD\Sheets\PLAN\_SET\2147\_COV\_SHT.dwg CONTROL ABSTRACT 1/16/2023 10:07:09 AM



POINT NUMBER	NORTHING	EATING	ELEVATION	DESCRIPTION
1	3201469	1144609	2003.78	CP1
5	3201710	1144595	1997.515	CP5
6	3202097	1144444	1995.711	CP6
7	3202158	1144586	1994.388	CP7
101	3201440	1144661	-	TEE
102	3201731	1144653	-	TEE
103	3201830	1144666	-	HYDRANT
104	3201758	1144439	-	HYDRANT
105	3202457	1144574	-	HYDRANT
106	3202152	1144778	-	HYDRANT
107	3201667	1144317	-	HYDRANT
108	3201464	1144647	-	PI
109	3201516	1144631	-	PC
110	3201530	1144629	-	PT
111	3201661	1144631	-	PC
112	3201702	1144639	-	PT
113	3201931	1144748	-	PC
114	3202014	1144779	-	PT
115	3202194	1144817	-	PC
116	3202414	1144733	-	PT
117	3202455	1144670	-	PC
118	3202487	1144578	-	PT
119	3201736	1144641	-	PC
120	3201738	1144542	-	PT
121	3201692	1144436	-	PC
122	3201678	1144387	-	PT
123	3201277	1144315	-	HYDRANT

COORDINATE SYSTEM  
 NAME: STATE PLANE 1983 (INT. FEET)  
 DATUM: NAVD 1988 (US FEET)  
 ZONE: MONTANA 2500  
 GEOID: GEOID18

YELLOWSTONE RIVER



CIG	6/14/2022
DRAWN BY:	DATE:
CRW	6/14/2022
CHECKED BY:	DATE:

REVISED BY:	DATE:
APPROVED BY:	DATE:

APPROVED BY:	DATE:
APPROVED BY:	DATE:

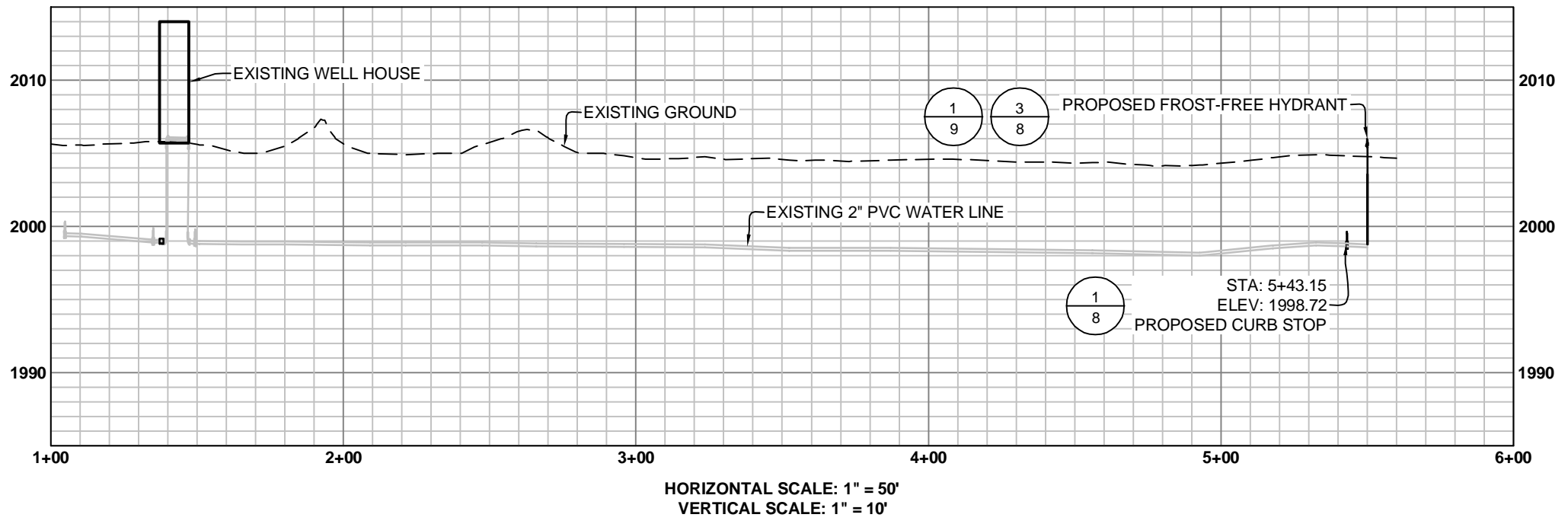
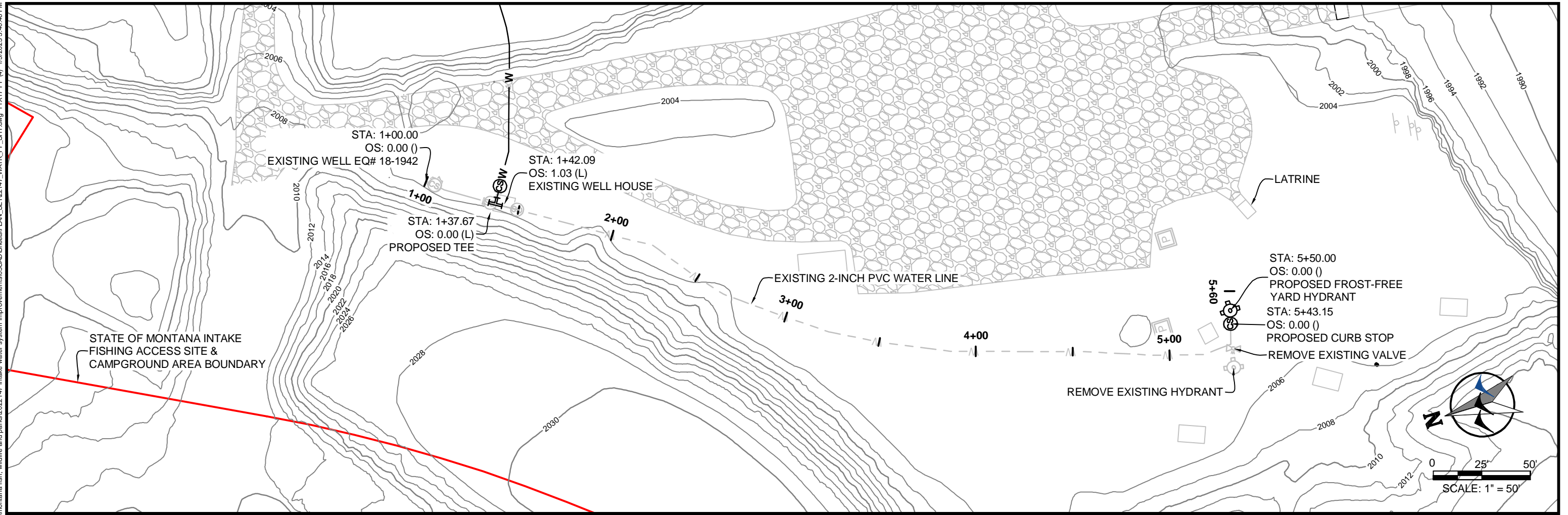


**MONTANA FISH,  
 WILDLIFE & PARKS**

**INTAKE FISHING ACCESS SITE  
 WATER SYSTEM IMPROVEMENTS - SITE LAYOUT**

SHEET:  
**3  
 of  
 9**

k:\sherdan\montana fish, wildlife and parks\2021\147 intake water system improvements\05\CAD\Sheets\PLAN\_SET\T2147\_WATR\_PP\_SHT.dwg 11X17 PP (4) 1/5/2023 3:40:46 PM

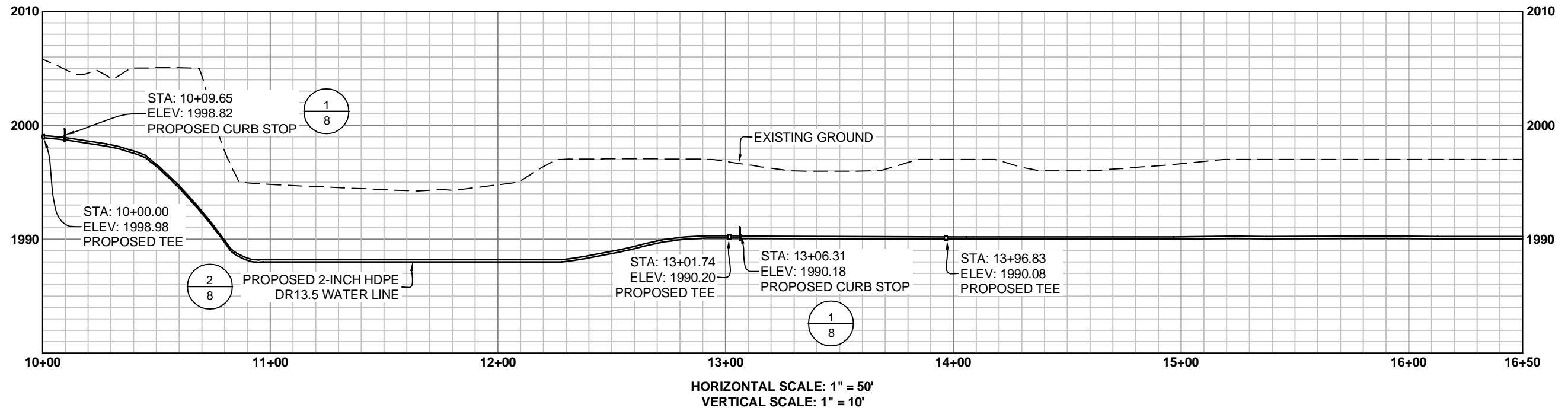
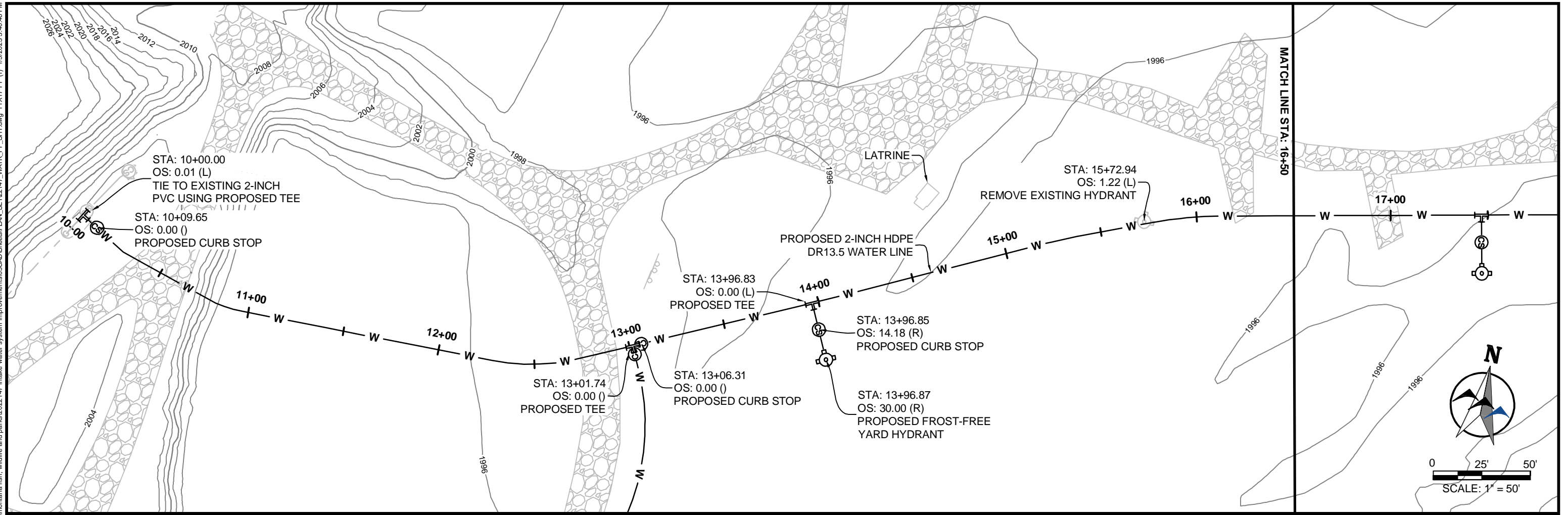


CIG	6/14/2022				
DRAWN BY:	DATE:	REVISED BY:	DATE:	APPROVED BY:	DATE:
CRW	6/14/2022				
CHECKED BY:	DATE:	APPROVED BY:	DATE:	APPROVED BY:	DATE:



**INTAKE FISHING ACCESS SITE**  
**WATER SYSTEM IMPROVEMENTS - PLAN AND PROFILE**

k:\sherdan\montana fish, wildlife and parks\2021\147 intake water system improvements\05\CAD\Sheets\PLAN\_SHT.dwg 11X17 PP (1) 1/5/2023 3:40:46 PM



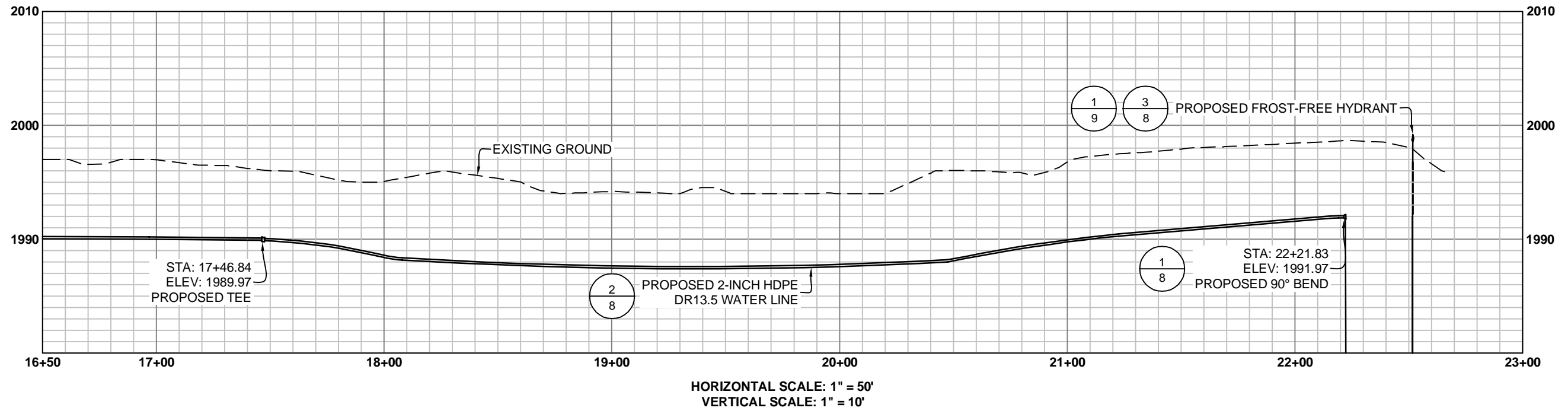
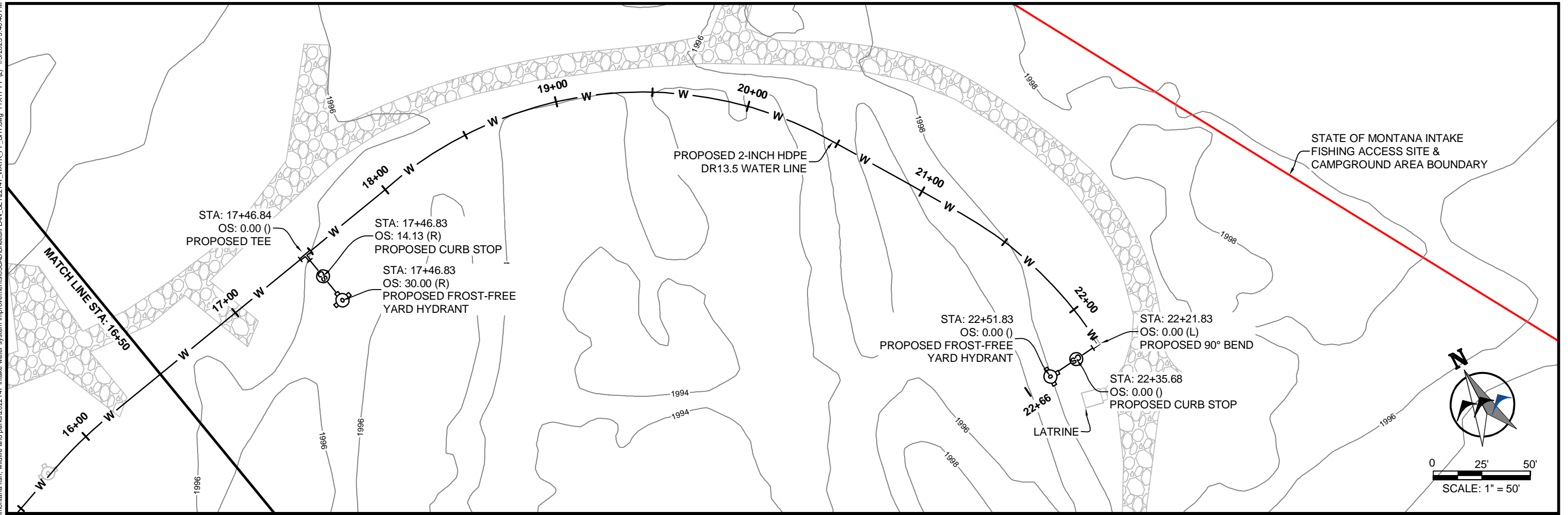
CIG	6/14/2022				
DRAWN BY:	DATE:	REVISED BY:	DATE:	APPROVED BY:	DATE:
CRW	6/14/2022				
CHECKED BY:	DATE:	APPROVED BY:	DATE:	APPROVED BY:	DATE:



**MONTANA FISH,  
WILDLIFE & PARKS**

**INTAKE FISHING ACCESS SITE  
WATER SYSTEM IMPROVEMENTS - PLAN AND PROFILE**

k:\sherdan\montana fish, wildlife and parks\2021\147 intake water system improvements\05\CAD\Sheets\PLAN\_SHT.dwg 11X17 PP (2) 1/5/2023 3:40:46 PM

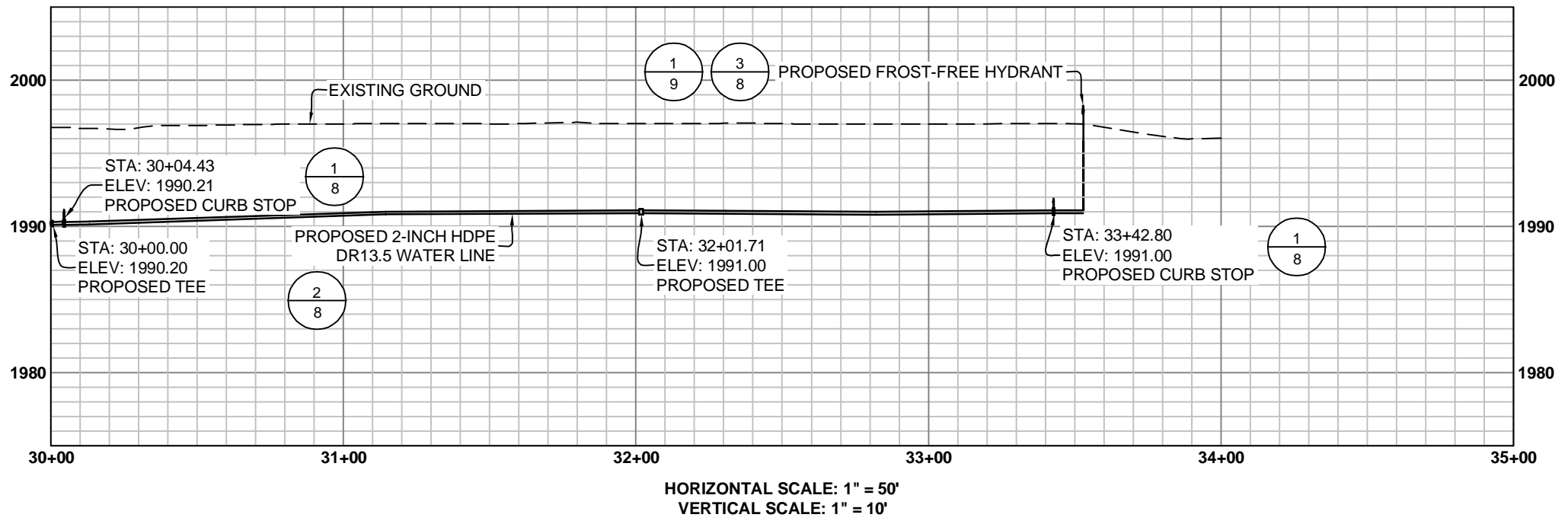
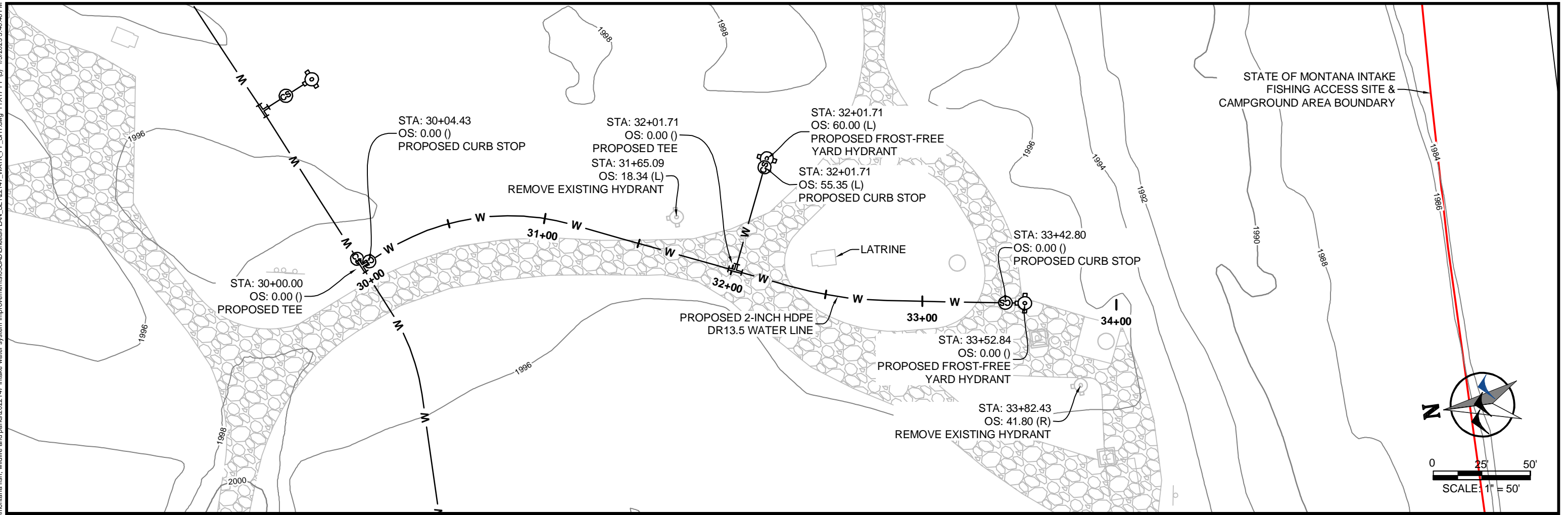


CIG	6/14/2022				
DRAWN BY:	DATE:	REVISED BY:	DATE:	APPROVED BY:	DATE:
CRW	6/14/2022				
CHECKED BY:	DATE:	APPROVED BY:	DATE:	APPROVED BY:	DATE:



**INTAKE FISHING ACCESS SITE  
WATER SYSTEM IMPROVEMENTS - PLAN AND PROFILE**

k:\sherdan\montana fish, wildlife and parks\2021\147 intake water system improvements\05\CAD\Sheets\PLAN\_SET\2147\_WATR\_PP\_SHT.dwg 11X17 PP (3) 1/5/2023 3:40:46 PM



HORIZONTAL SCALE: 1" = 50'  
VERTICAL SCALE: 1" = 10'

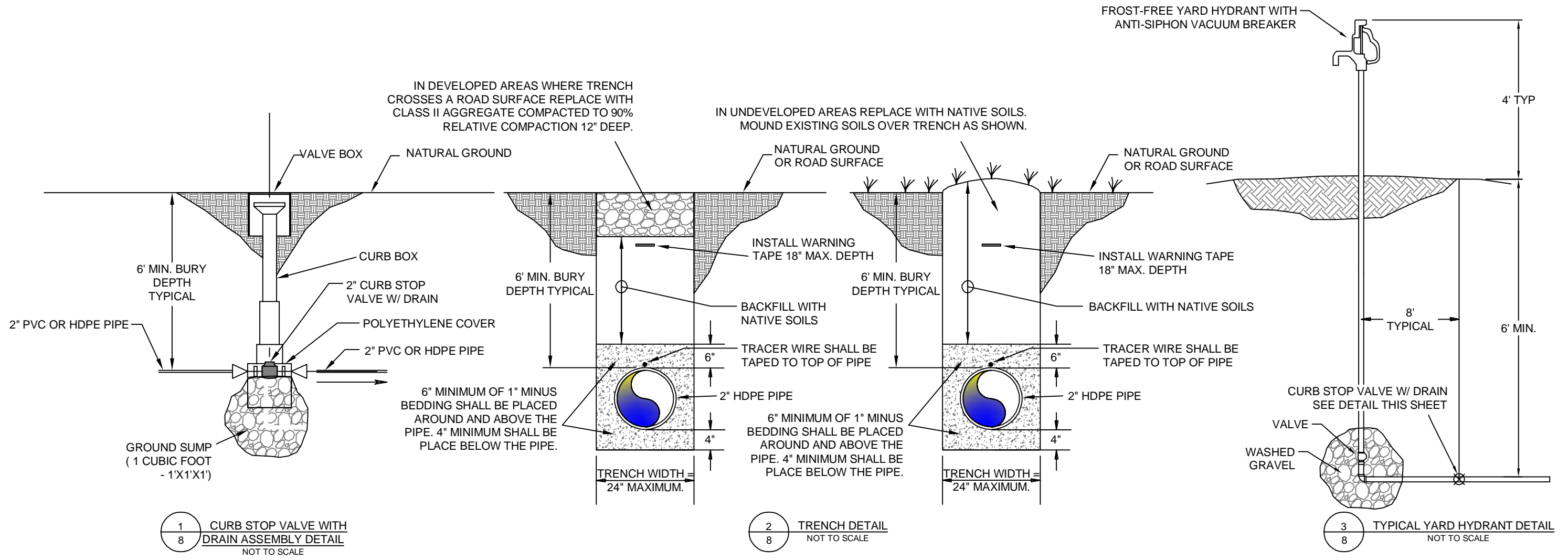
CIG	6/14/2022				
DRAWN BY:	DATE:	REVISED BY:	DATE:	APPROVED BY:	DATE:
CRW	6/14/2022				
CHECKED BY:	DATE:	APPROVED BY:	DATE:	APPROVED BY:	DATE:



**MONTANA FISH,  
WILDLIFE & PARKS**

**INTAKE FISHING ACCESS SITE  
WATER SYSTEM IMPROVEMENTS - PLAN AND PROFILE**

k:\Sheridan\montana fish, wildlife and parks\2022\147 intake water system improvements\CAD\Sheets\PLAN\_SET\02147\_DET1\_SHT.dwg SYSTEM 1/5/2023 3:41:19 PM



CIG 6/14/2022  
 DRAWN BY: DATE:  
 CRW 6/14/2022  
 CHECKED BY: DATE:

REVISED BY: DATE:  
 APPROVED BY: DATE:

APPROVED BY: DATE:  
 APPROVED BY: DATE:

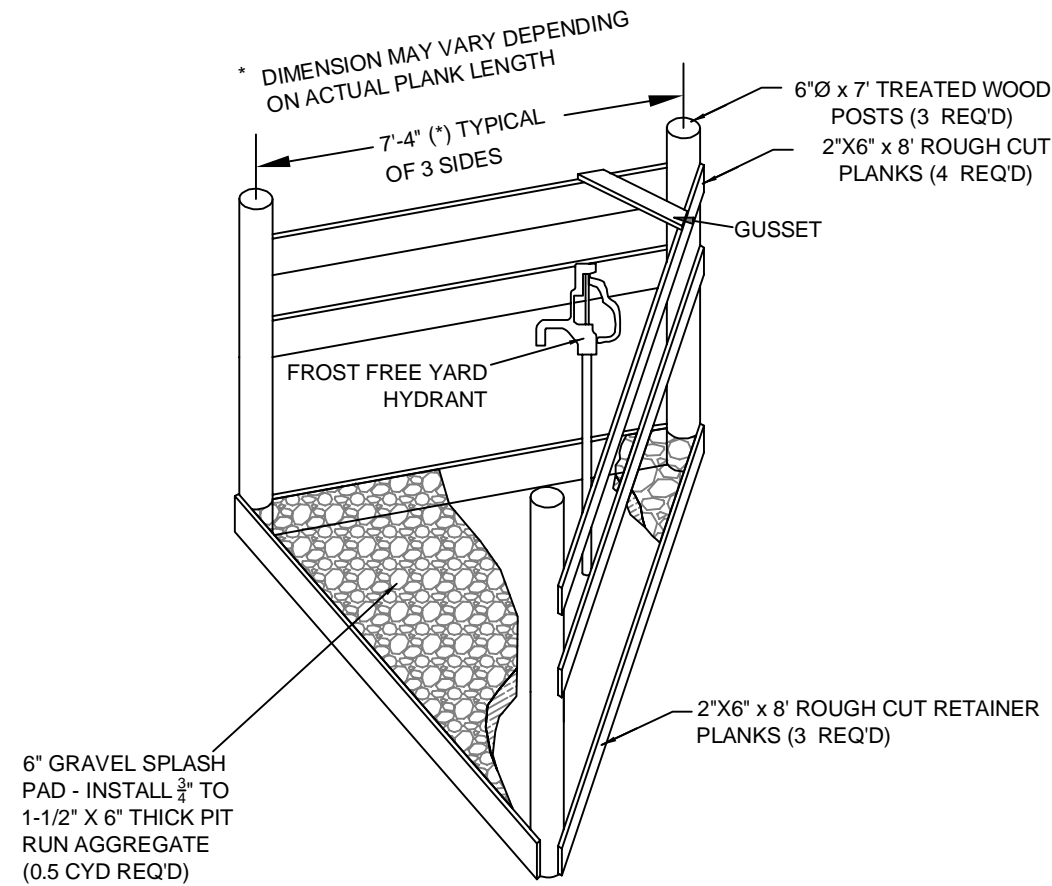


**MONTANA FISH,  
 WILDLIFE & PARKS**

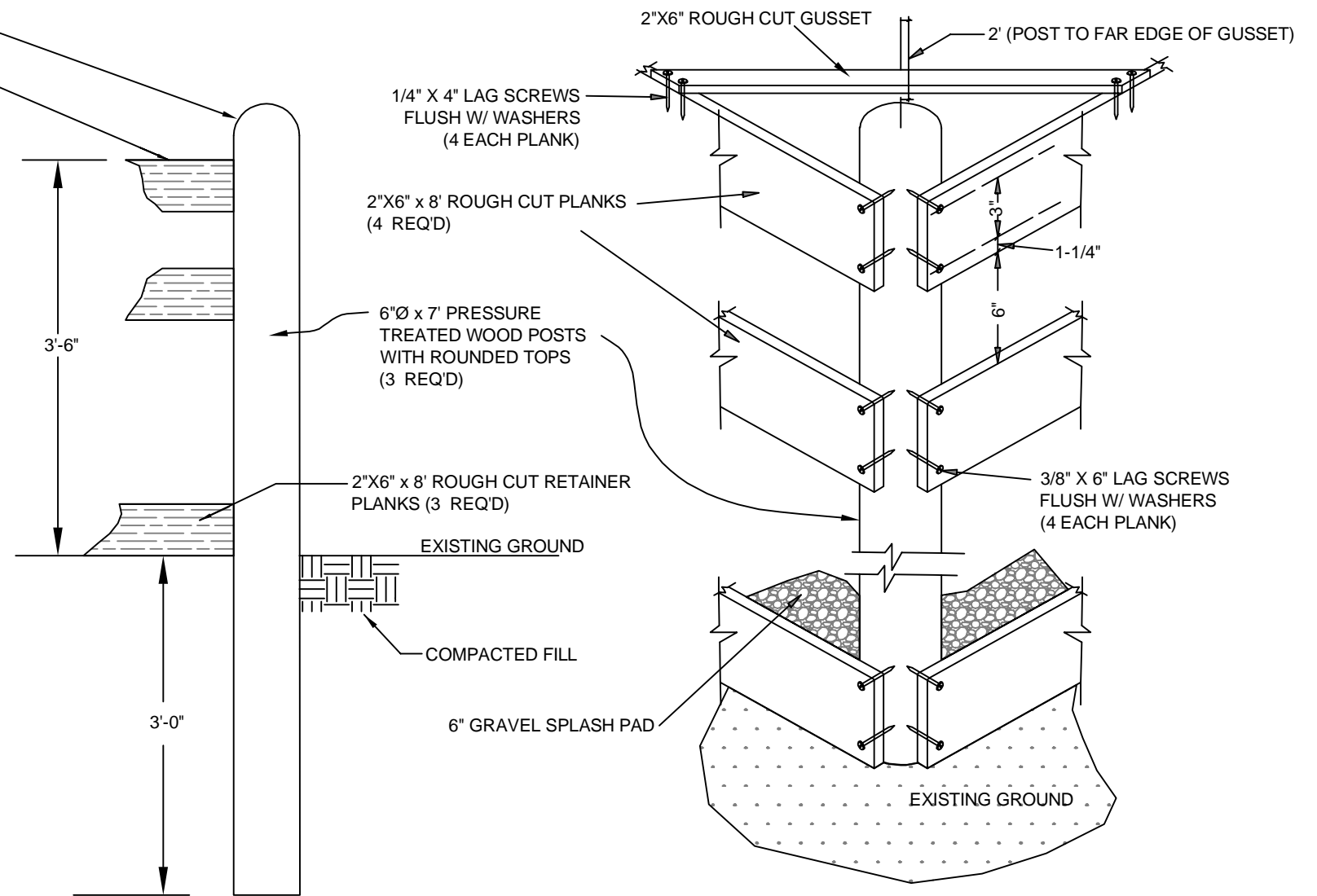
**INTAKE FISHING ACCESS SITE  
 WATER SYSTEM IMPROVEMENTS - DETAILS**



k:\Sheridan\montana fish, wildlife and parks\2021\47 intake water system improvements\05CAD\Sheets\PLAN\_SET\02147\_DET1\_SHT.dwg WELL 1/5/2023 3:41:19 PM



1  
9 FILL STATION DETAIL  
ISOMETRIC VIEW  
NOT TO SCALE



2  
9 WOOD POST DETAIL  
NOT TO SCALE

3  
9 ATTACHMENT DETAIL  
NOT TO SCALE

CIG 6/14/2022  
DRAWN BY: DATE:  
CRW 6/14/2022  
CHECKED BY: DATE:

REVISED BY: DATE:  
APPROVED BY: DATE:

APPROVED BY: DATE:  
APPROVED BY: DATE:



**MONTANA FISH,  
WILDLIFE & PARKS**

**INTAKE FISHING ACCESS SITE  
WATER SYSTEM IMPROVEMENTS - HYDRANT FILL STATION**

SHEET: 9 of 9