

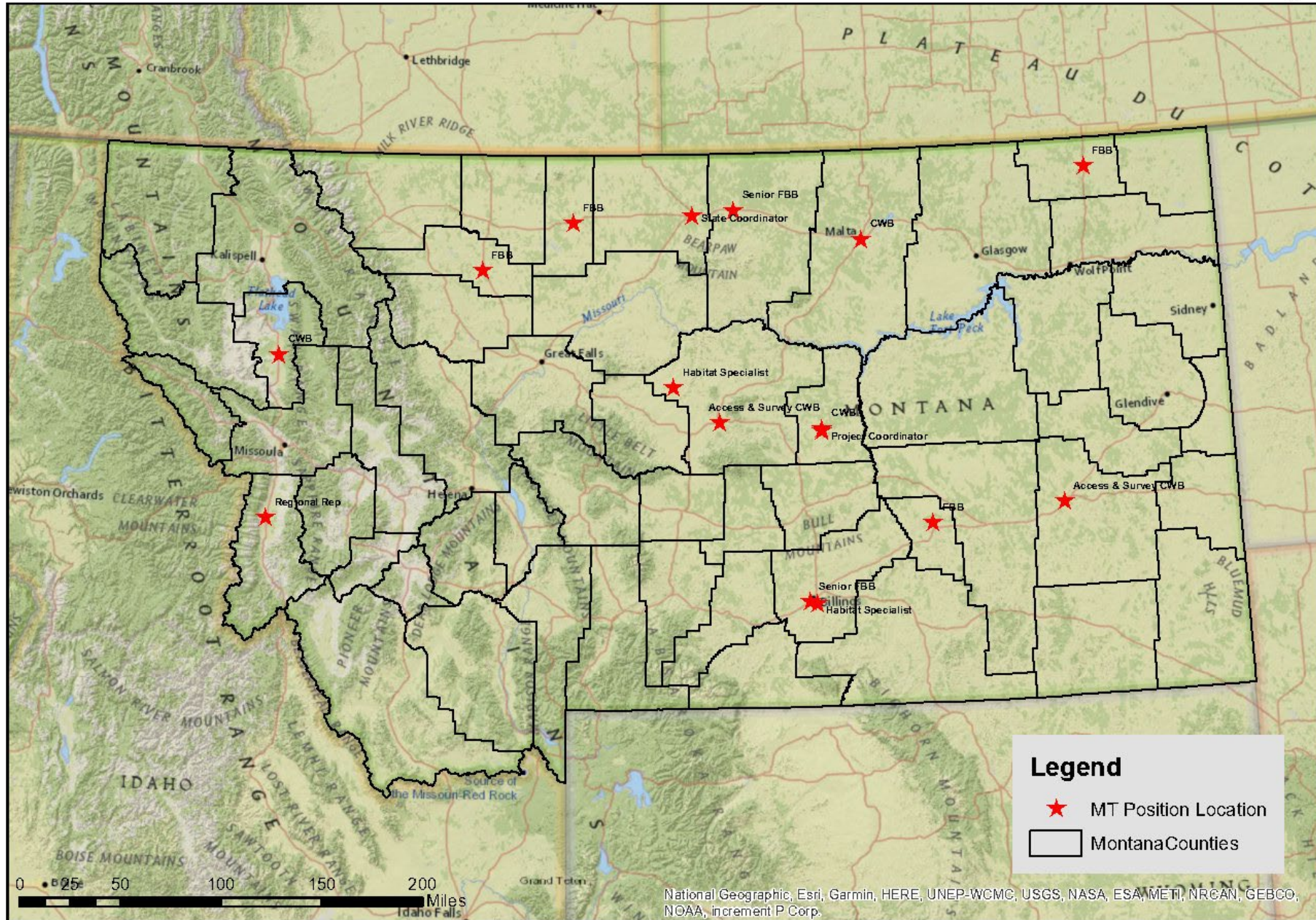
Pheasants Forever Update

UGBEP MEETING FALL 2023





Montana Position Locations



Farm Bill Biologist Team

Chester- Maverick Cady

Chinook- Shaun McCabe

Conrad- Josh Young

Billings- Crystal White

Scobey- Stephanie Berry

Hysham- Cole Stumpf

PF MT Impact April-Sept

104,000 Project Footprint Acres

357 Landowner Contacts

16,891 acres of prescribed grazing

1 mile of wildlife friendly fence modification

2,300 acres of grass seeding

Hired and onboarded- Chinook, Conrad, Scobey FBB positions

2023 FBB Priorities

CRP Signup (19,844.11 acres contracted May-Now)

- **CRP State Acres for Wildlife Enhancement (SAFE)**
- **CRP General Signup**
- **CRP Grasslands**

Open Fields

- **Completed outreach and education with CRP enrollment (every CRP cooperator working with FBB was informed)**

Wildlife Focused TIPs

- **Scobey Sharp-tail TIP**
- **Ft Benton Grouse**
- **Conrad Pollinator**
- **Yellowstone/Bighorn Pollinator Pivot Corners**
- **Treasure Invasive Annual Grasses**

Intact Grassland/Sagebrush

- **Big Game RCPP, Northern Great Plains RCPP**
- **Sage Grouse Initiative -**

Montana Focused Conservation



Locally led

Partner-Centric

Cost Effective

Focused and Targeted

Results-Oriented



Long Range Plans

Priority Resource Concerns

Meant to be a dynamic working document

- Changes as resource concerns are identified

Local Working Groups

- Get Involved! The earlier the better.

Driven by NRCS Field Offices

- Build a relationship with your District Conservationist

What is a TIP?

Long range plans?

Priority Resource Concerns

Attend your local working group-
be involved!!

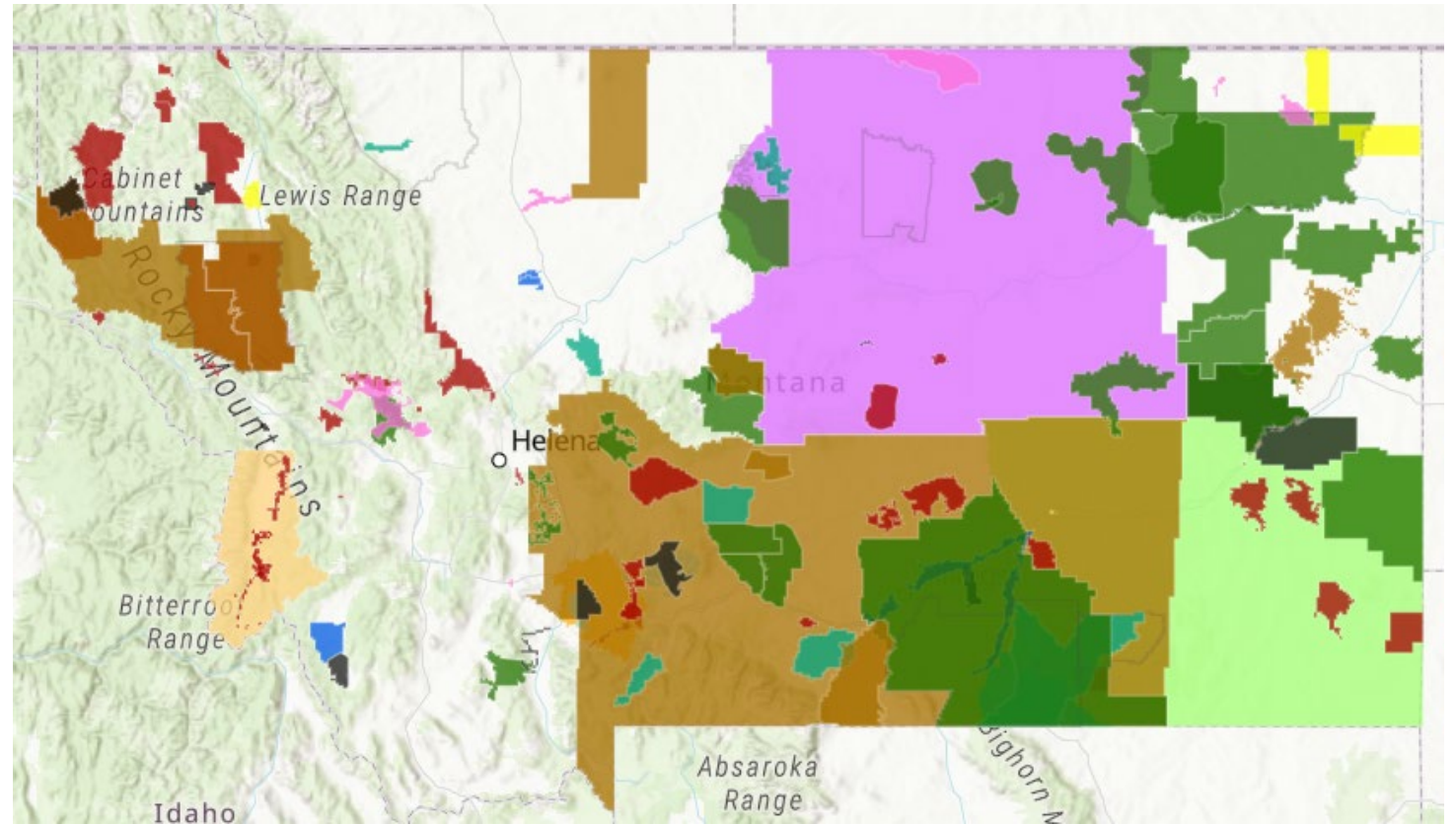


Link to Montana TIPs on arc gis online

<https://www.nrcs.usda.gov/pr/programs-initiatives/eqip-environmental-quality-incentives/montana/whats-available-in-my-county>

Interactive

map: <https://www.arcgis.com/apps/MapSeries/index.html?appid=b89e8f518d8142f0a35122f44774f9a1>



Bozeman Senior FBB addition

NRCS Area office position

Providing wildlife conservation planning expertise to field offices and producers in the Bozeman NRCS Area. (Townsend to Forsythe)

Lead for the NRCS easement program for the Bozeman Area

Outreach and relationship building with private landowners

Support to partners and referrals for MT FWP programs

Been difficult to fill so far.

Glasgow Coordinating Wildlife Biologist

Partnership with Bureau of Land Management, USFWS, RSA, and others.

Support for sagebrush conservation, wildlife corridors, and implementation of Restoration Landscapes Initiative Project: Sagebrush Anchor.

- Mesic Restoration
- Woody Draw Restoration- focus on Buffaloberry and other native shrubs
- Crested Wheatgrass Renovation
- Virtual Fence

Wildcat Bend

328 acre acquisition along the lower Yellowstone

Part of larger strategic acquisition

Upon final completion 2,300 acre complex

Part of PF's Build a Wildlife Area Program

PF is committing to fundraising \$585,000 for this project.

